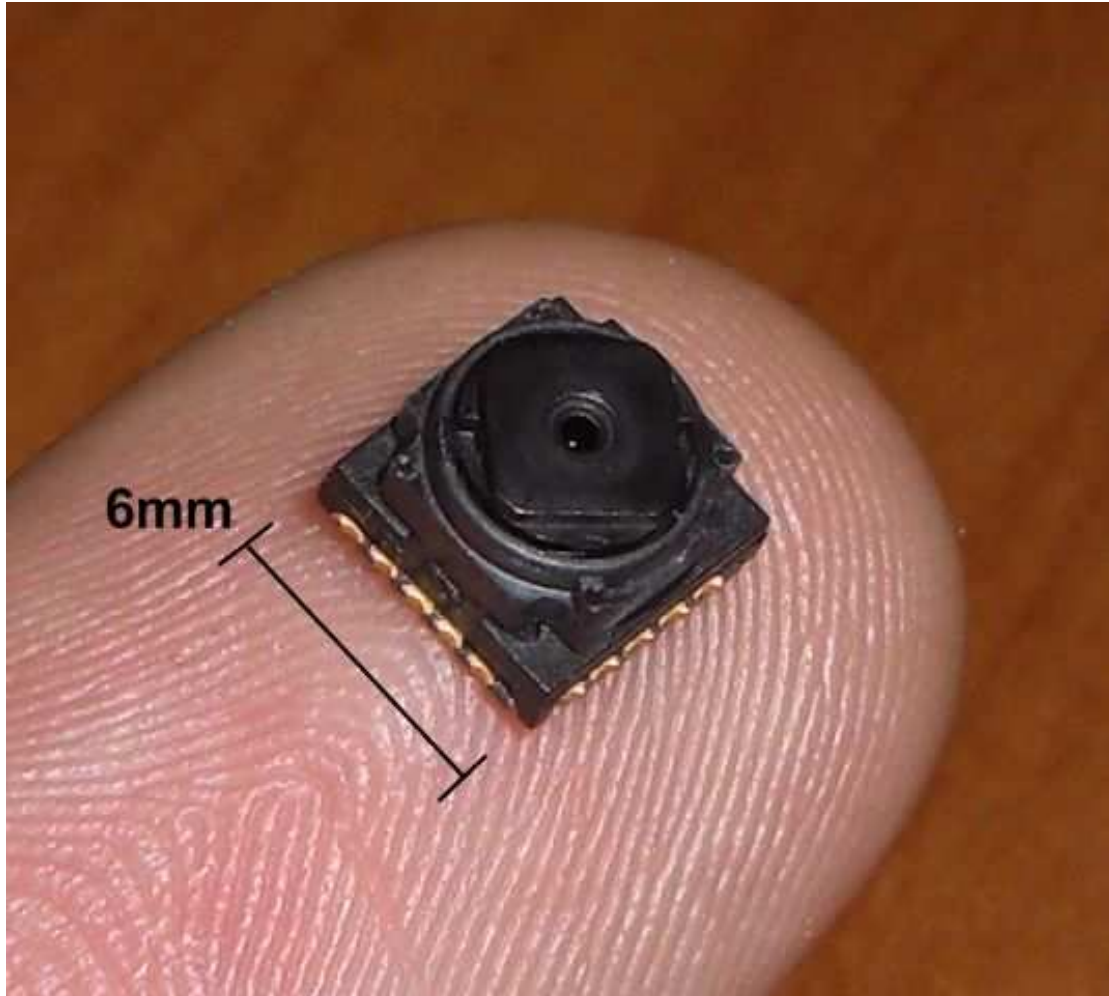
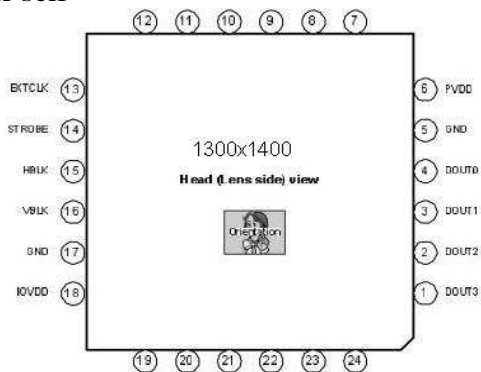


Dear Friend,

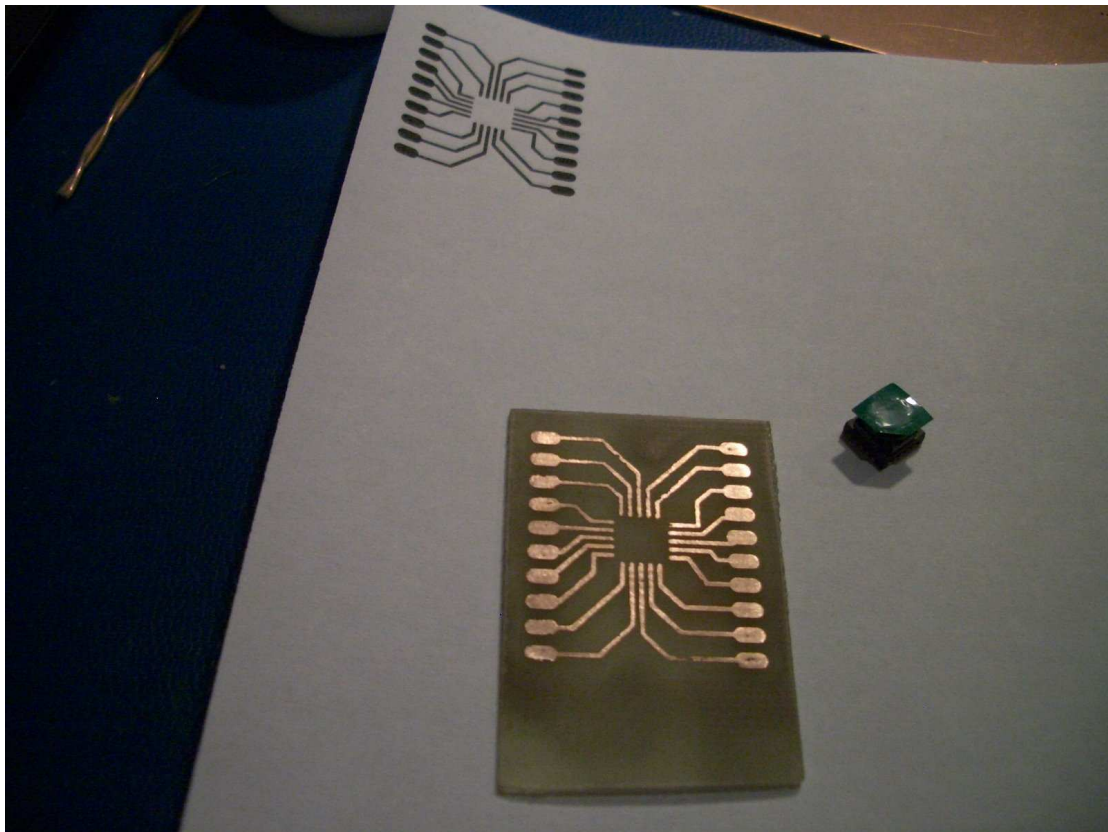
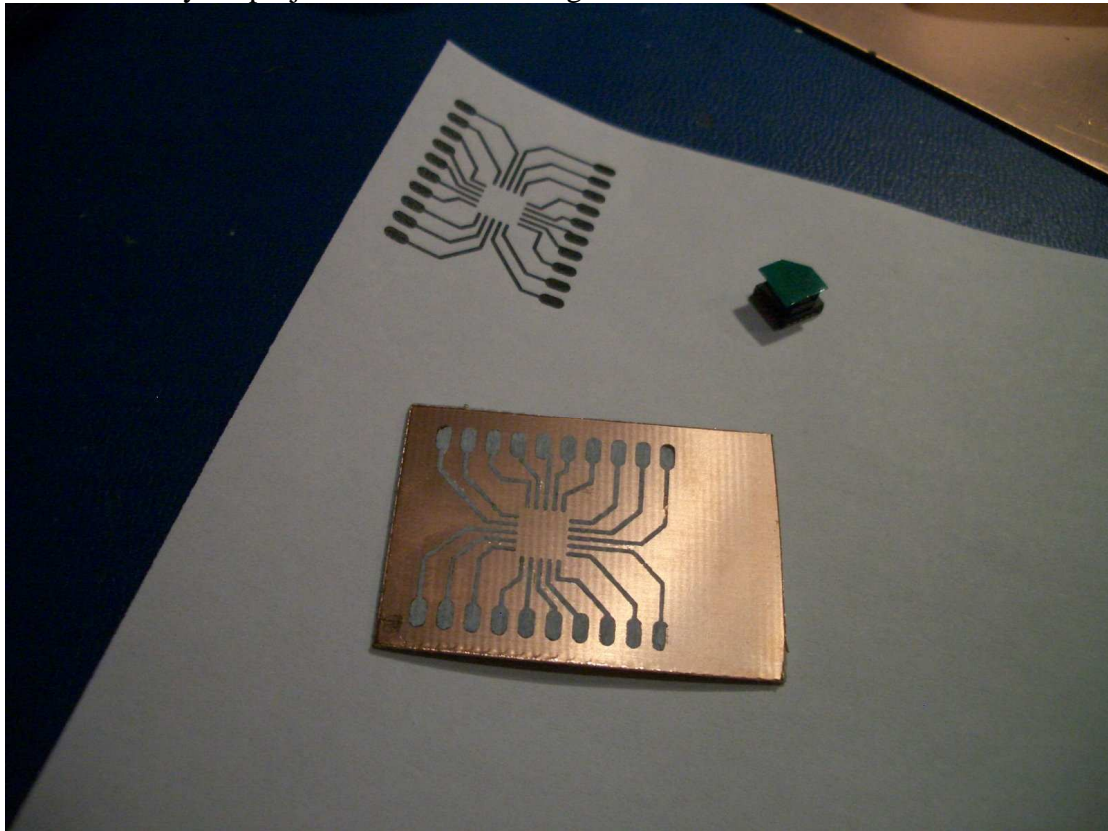
As you are aware of camera module shown in figure is of TCM8230 having specification of 640x480 resolution i.e. VGA.

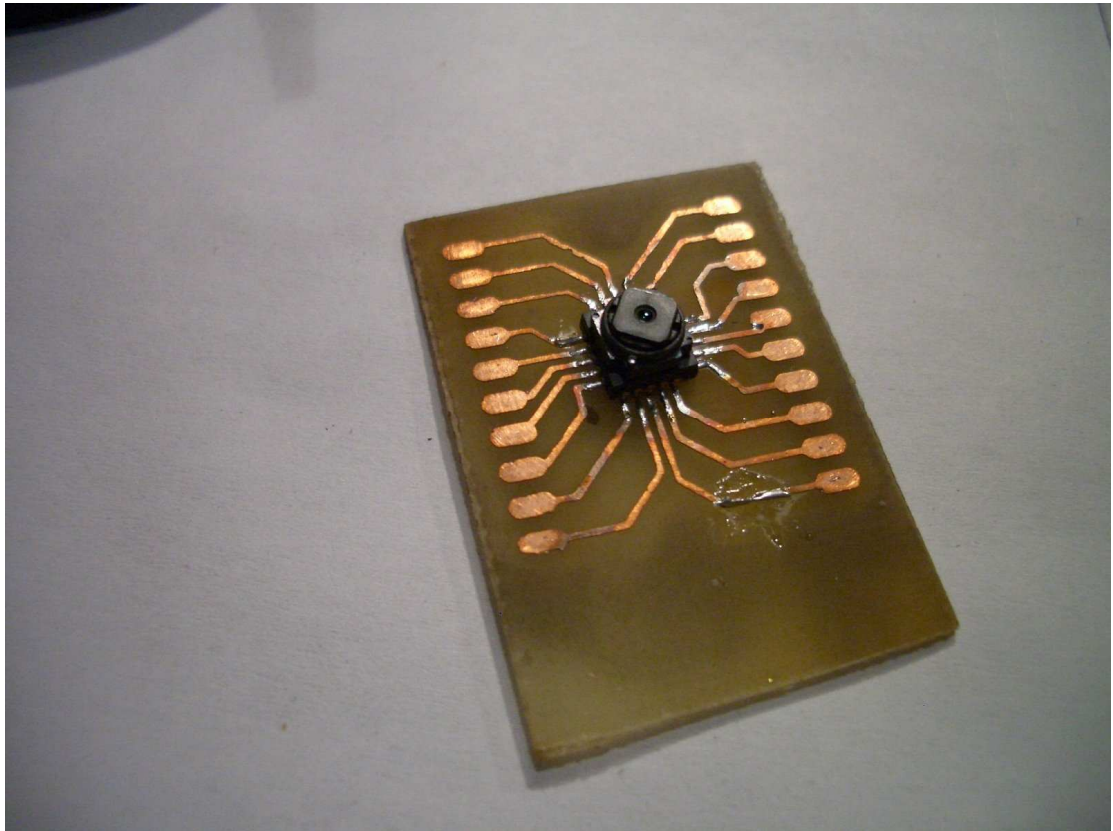


I will suggest if you want to move to higher version of this model which is 1.3Megapixel camera which is much higher image resolution for your project. Also the PIN configuration of this module as shown in figure and you can compare it your self



As this is the only module you have to first mount on PCB and after that you will be able to use in your project. Here are the images of PCB





Yours Truly,
M.H.PADIA
9427026076