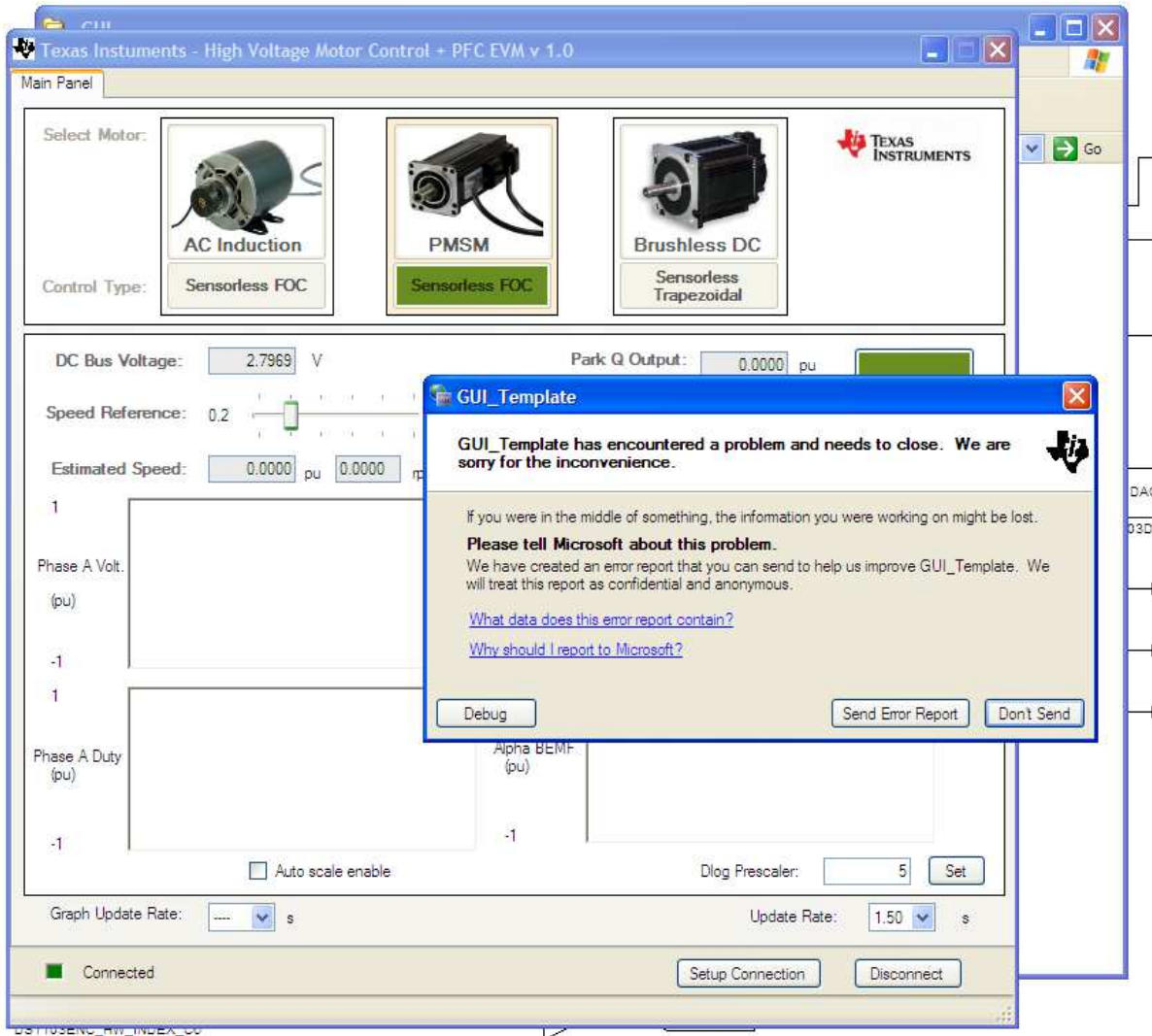
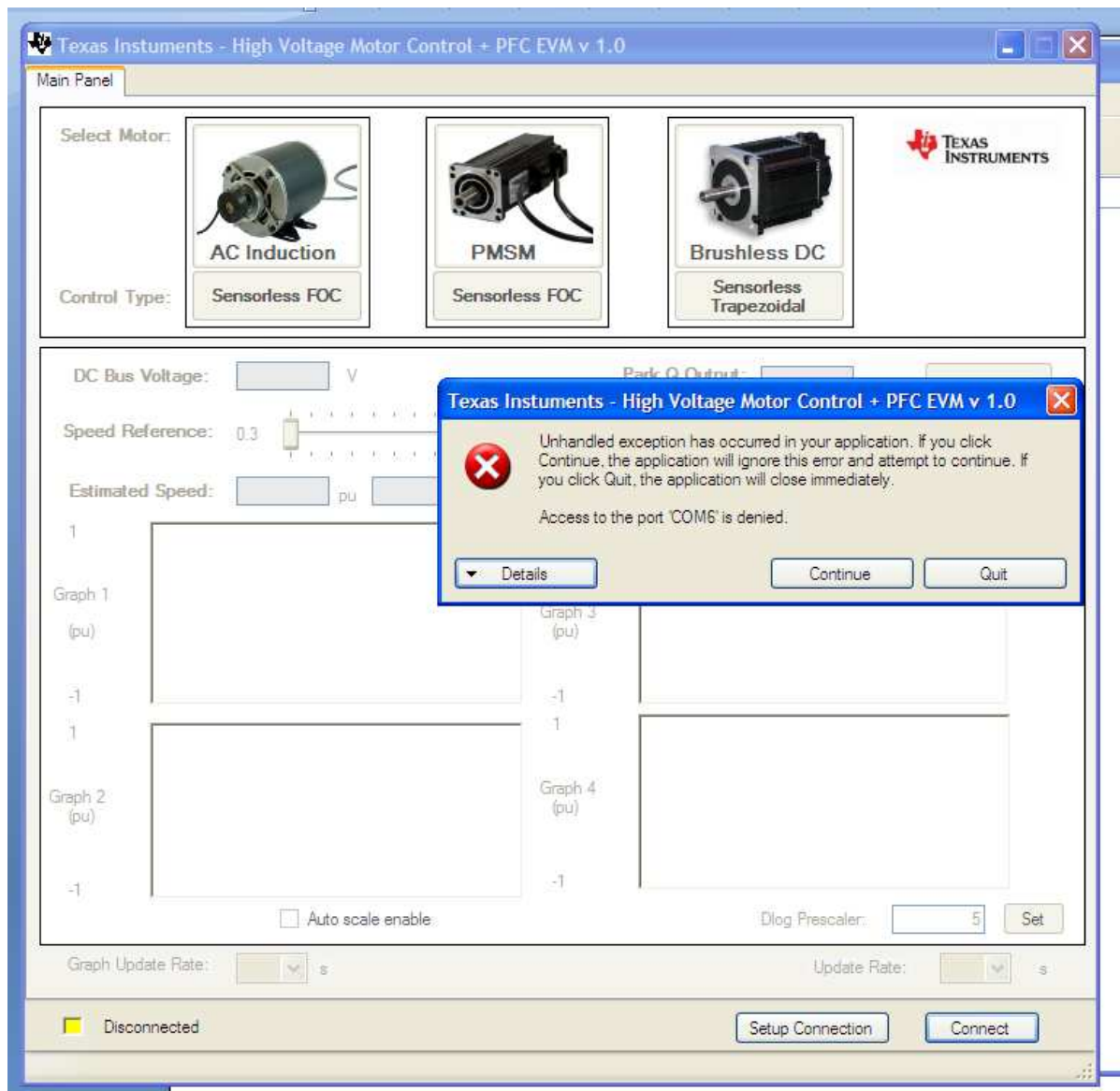


Connection lost immediately after startup with a warning. This error report window doesn't always show up. Usually, the GUI just stops responding to changes. Sometimes the GUI buttons will work and it will say Connected or Disconnected, and change with the action of the user, but the board doesn't reflect any changes set in the GUI.



Error after second time trying to connect. Did not turn off board, unplug USB, or restart GUI. If we restart the GUI and then reconnect, it usually works for a short period of time, and the error shown below doesn't show up.

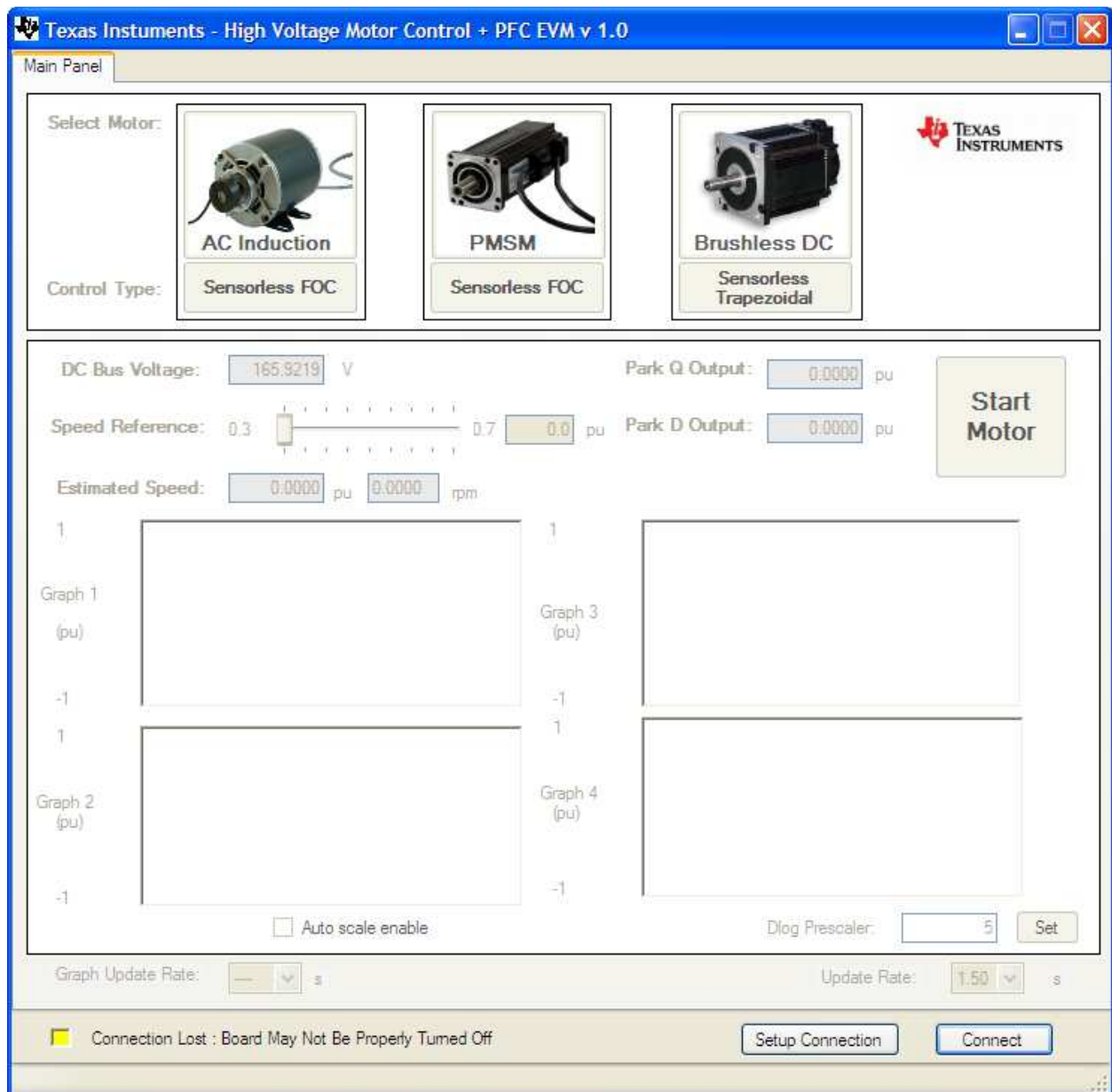


Re-opened GUI.

Unplugged USB, plugged back in, and connects without a problem.

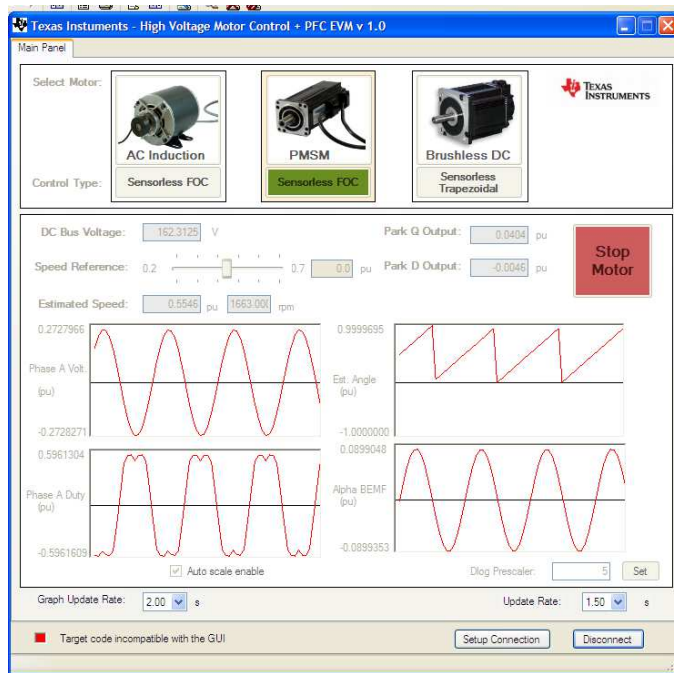
A short while later... keeps disconnecting after restart GUI. Notice the status in the bottom left.

Sometime the status says something like "...target code is incompatible with GUI...". I don't have the screen shot of this message, but it shows up while trying to connect, not after the connection is lost.

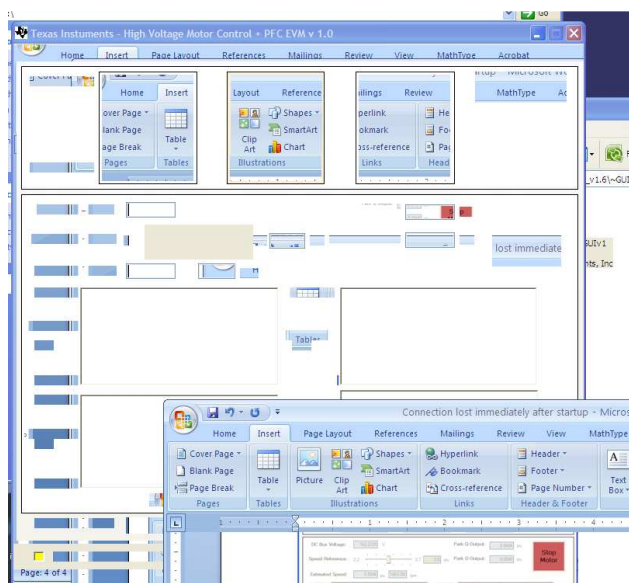


2/17/12:

Changed firewall settings to allow GUI. Program seemed to be working fine, but then connection was lost after less than 2 minutes. Click disconnect, status shows disconnected. Click Connect, status shows “Target Code Incompatible with the GUI”. Also trying a different port number; still no change.

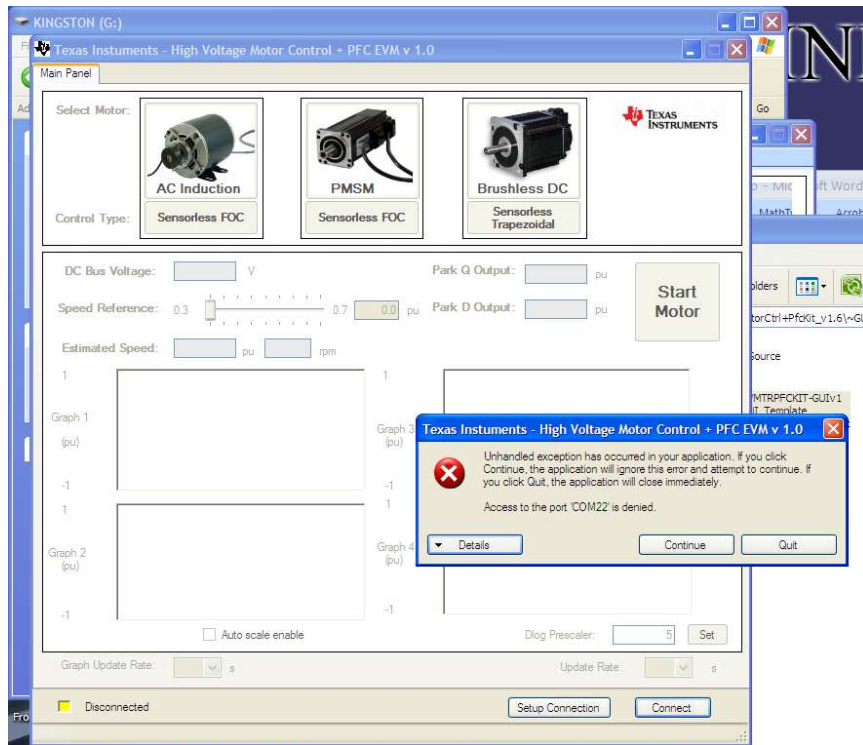


Disconnected USB, and plugged it back in. Click connect, status shows same message “incompatible with GUI” . The graphs are actually updating even though the same error message is displayed. The DC Bus voltage is not updating, speed doesn’t work, just the graphs are working. Clicked disconnect, and the GUI stops responding...



Still shows up in Task Manager as Running.

Try to re-open the GUI and get this message...



Click "continue", and then try to click connect again, and get same message. Click quit and GUI closes.

Disconnect and Reconnect USB Cable, and then re-open the GUI, and can connect to the board with no problem. Motor runs and graph updates. Can disconnect, connect, run. Problem is still consistently intermittent.