

These are the steps I am following for configuring my EVM.

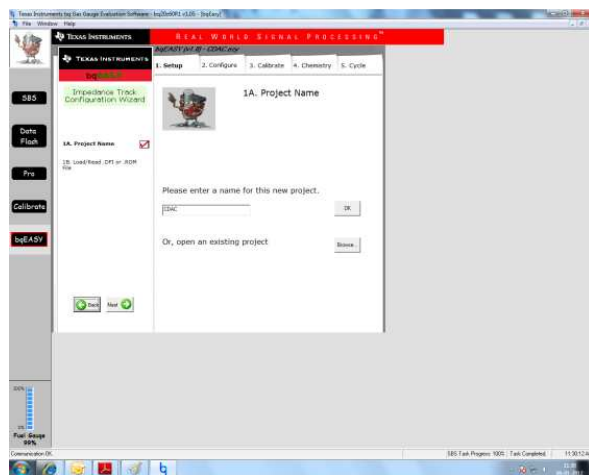
First screen apperaed .



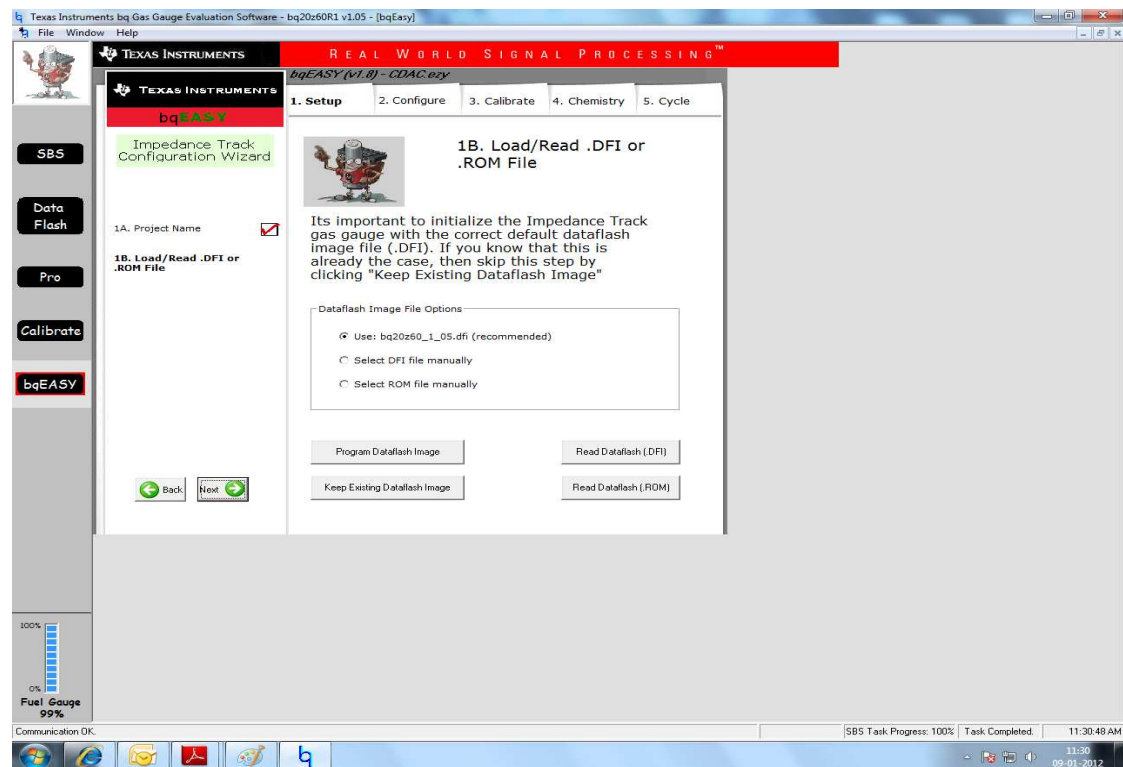
2. bqEASY screen



3. New project name



4. Load/Read .DFI



(Here, can I use default .dfi file or am I supposed to use/change the settings under four tabs given?(pargrame dataflash image/read flash/..../...)

You should use the default .dfi to start.

5. Cell characteristics are changed according to project' need(3S2P)



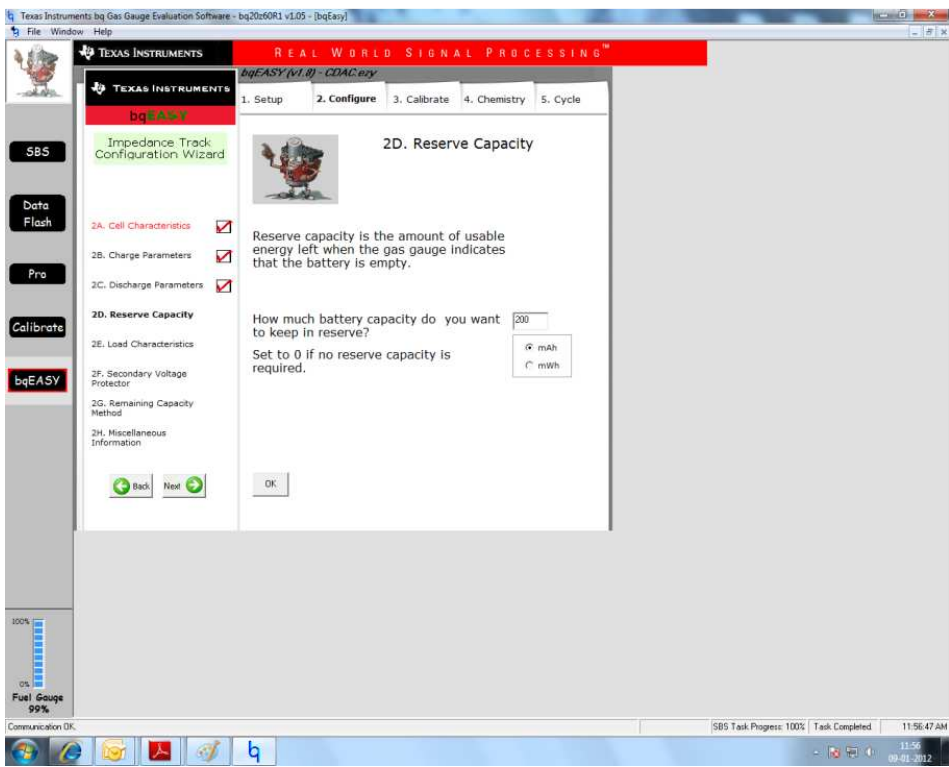
6. Discharge Parameters

(Can I use the default values of temperature and protection current. Or is there any specific safe limit?)

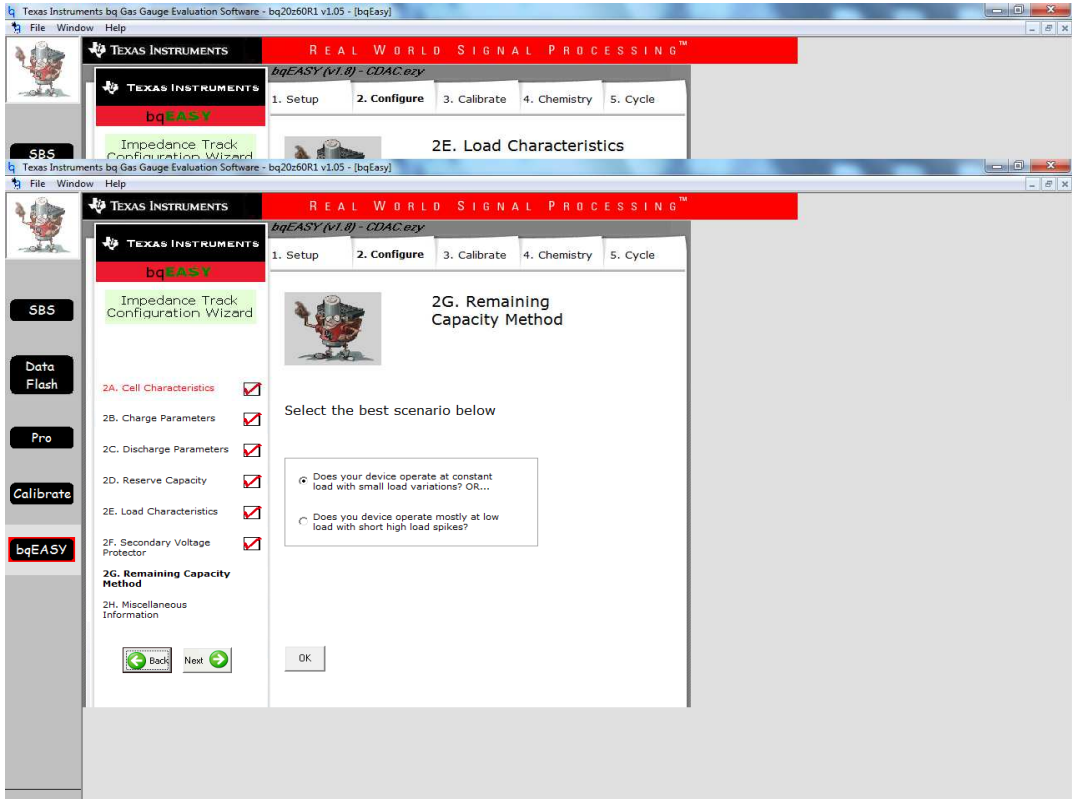
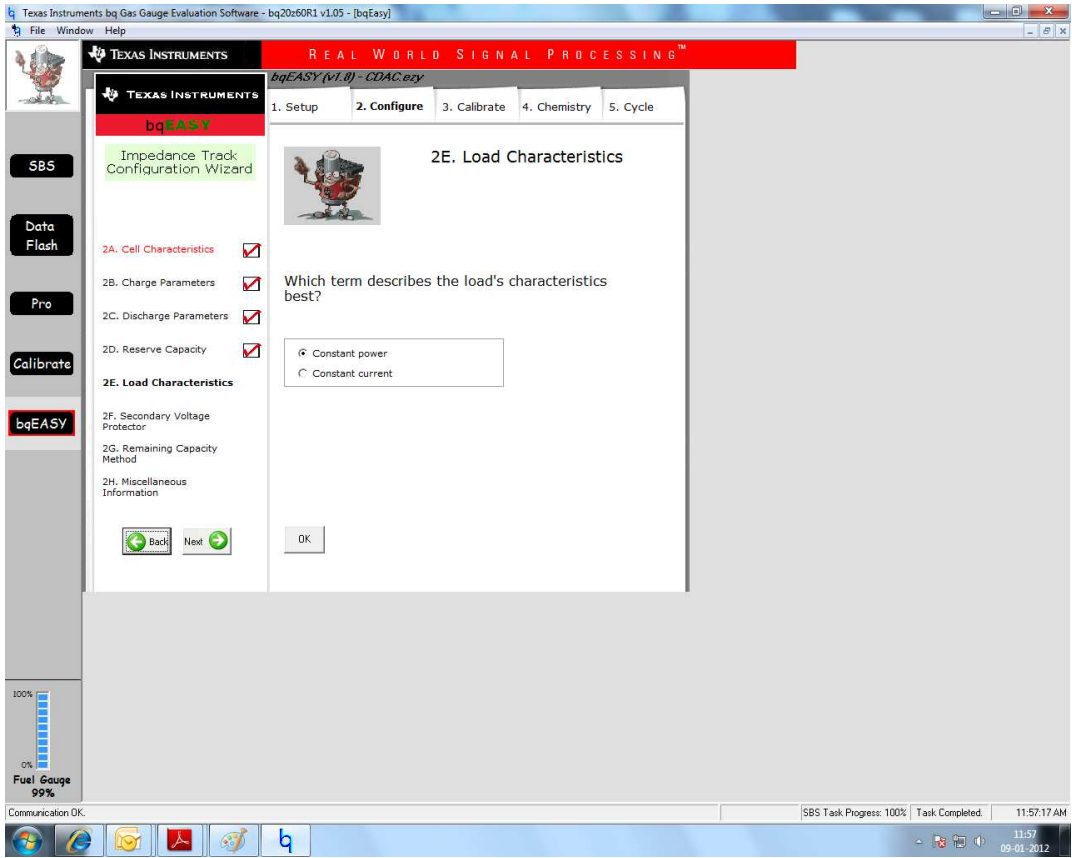


This is dependent on your setup. You do not use external sensors, so 70C should be okay.

7. Reserve capacity.

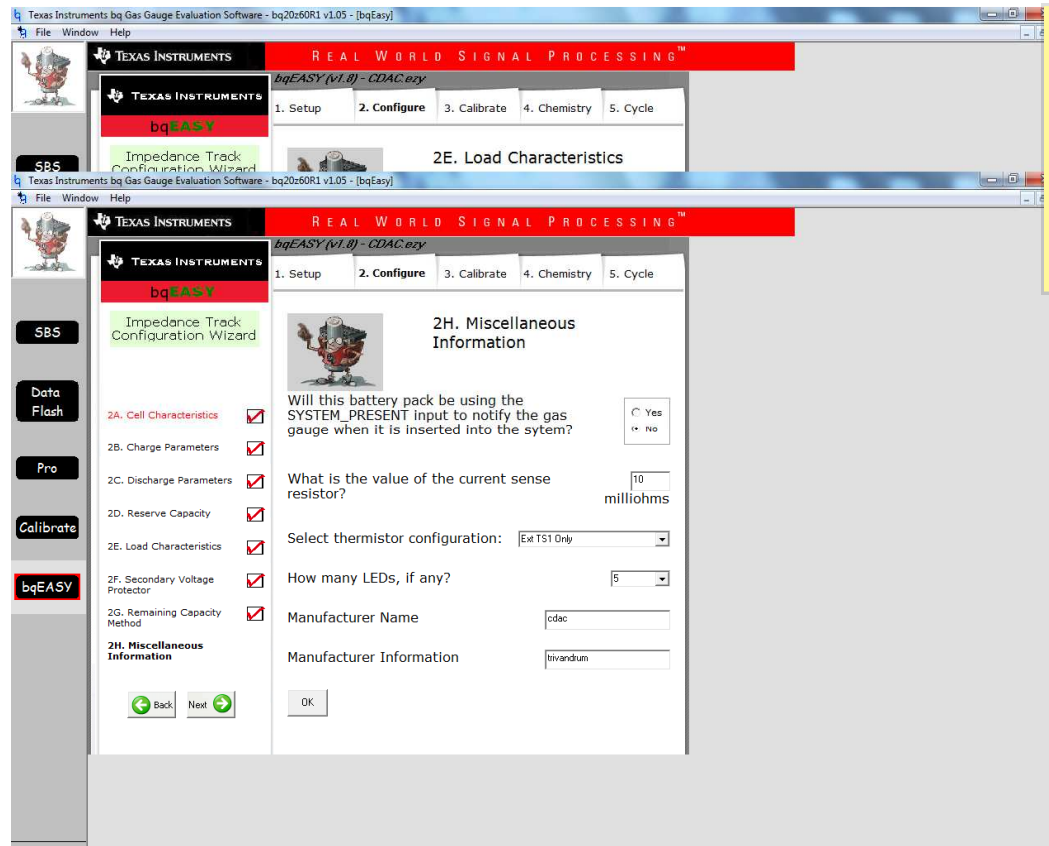


8. Load characteristics



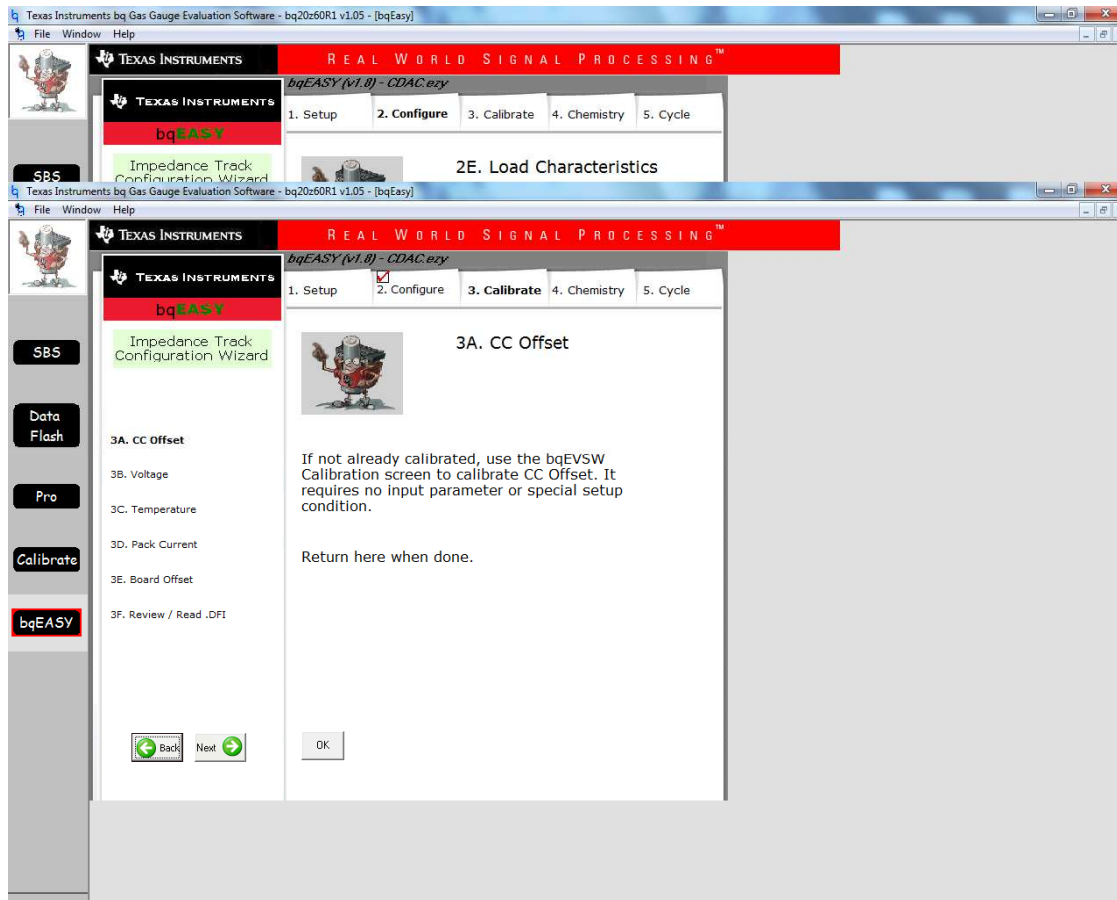
9. Here I would like to get some help on presence of System-present input , value of current sense resistor (twice I got amessage that the resistor value is not realistic kind of).

I don't have a temperature sensor on my pack, so how to set thermistorconfig?

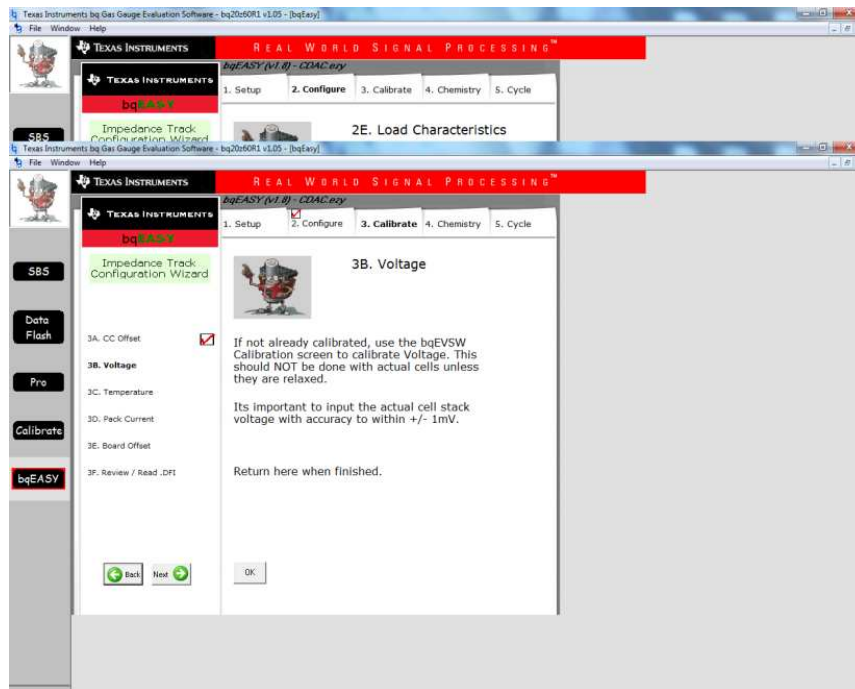


You should select the internal temperature sensor. It is not recommended to operate without an external temperature sensor connected

Then go to learning cycles.



11.a



You will need to calibrate everything except for the temperature sensor.

11b. Don't have temperature info. What should I do here?

