

Selecting antennas for low-power wireless applications

By Audun Andersen

Field Application Engineer, Low-Power Wireless

Introduction

The antenna is a key component in an RF system and can have a major impact on performance. High performance, small size, and low cost are common requirements for many RF applications. To meet these requirements, it is important to implement a proper antenna and to characterize its performance. This article describes typical antenna types and covers important parameters to consider when choosing an antenna.

Antenna types

Antenna size, cost, and performance are the most important factors to consider when choosing an antenna. The three most common antenna types for short-range devices are PCB antennas, chip antennas, and whip antennas. Their pros and cons are shown in Table 1.

PCB antennas

Designing a PCB antenna is not straightforward and usually requires a simulation tool to obtain an acceptable solution. In addition to deriving an optimum design, configuring such a tool to perform accurate simulations can be difficult and time consuming.

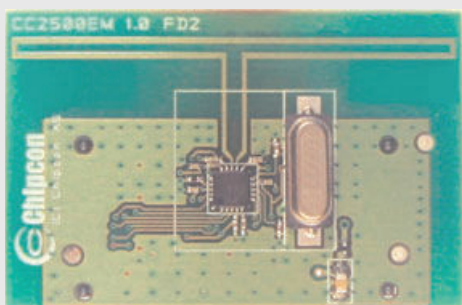
Table 1. Pros and cons for different antenna solutions

ANTENNA TYPES	PROS	CONS
PCB Antenna	<ul style="list-style-type: none"> • Low cost • Good performance is possible • Small size is possible at high frequencies 	<ul style="list-style-type: none"> • Difficult to design small and efficient antennas • Potentially large size at low frequencies
Chip Antenna	<ul style="list-style-type: none"> • Small size 	<ul style="list-style-type: none"> • Medium performance • Medium cost
Whip Antenna	<ul style="list-style-type: none"> • Good performance 	<ul style="list-style-type: none"> • High cost • Difficult to fit in many applications

Chip antennas

If the board space for the antenna is limited, a chip antenna could be a good solution. This antenna type supports a small solution size even for frequencies below 1 GHz. The trade-off compared to PCB antennas is that this solution will add materials and mounting cost. The typical cost of a chip antenna is between \$0.10 and \$1.00. Even if chip-antenna manufacturers state that the antenna is matched to 50 Ω for a certain frequency band, additional matching components are often required to obtain proper performance.

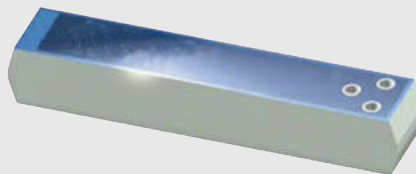
Figure 1. Typical antenna solutions



(a) PCB antenna



(b) Whip antenna



(c) Chip antenna

Whip antennas

If good performance is the most important factor, and size and cost are not critical, an external antenna with a connector could be a good solution. These antennas are often monopoles and have an omni-directional radiation pattern. This means that the antenna has approximately the same performance for all directions in one plane. The whip antenna should be mounted normally on the ground plane to obtain best performance. For maximum economy, a quarter-wavelength piece of wire can provide an effective solution.

Antenna parameters

Some of the most important things to consider when choosing an antenna are: the radiation pattern, antenna efficiency, and antenna bandwidth.

Radiation pattern and gain

Figure 2 shows how the radiation pattern from a PCB antenna varies in different directions in the plane of the PCB. Several parameters are important to know when interpreting such a plot. Some of these parameters are stated in the lower left portion of Figure 2.

In addition to the plot information, it is important to relate the radiation pattern to the positioning of the antenna. Radiation pattern is typically measured in three orthogonal planes, XY, XZ and YZ. It is possible to perform full 3D pattern measurements, but it is usually not done because it is time consuming and requires expensive equipment. Another way of defining these three planes is by using a spherical coordinate system. The planes will then typically be defined by $\theta = 90^\circ$, $\phi = 0^\circ$ and $\phi = 90^\circ$. Figure 3 shows how to relate the spherical notation to the three planes. If no information is given on how to relate the directions on the radiation pattern plot to the positioning of the antenna, 0° is the X direction and angles increase towards Y for the XY plane. For the XZ plane, 0° is in the Z direction and angles increase towards X. For the YZ plane, 0° is in the Z direction and angles increase towards Y.

The gain, or reference level, usually refers to an isotropic radiating antenna, which is an ideal antenna with uniform radiation in all directions. When an isotropic antenna is used as a reference, the gain is given in dBi or specified as the effective isotropic radiated power (EIRP). The outer circle in Figure 2 corresponds to 5.6 dBi and the 4-dB/div label in the lower left means that for each progressively

Figure 2. Radiation pattern

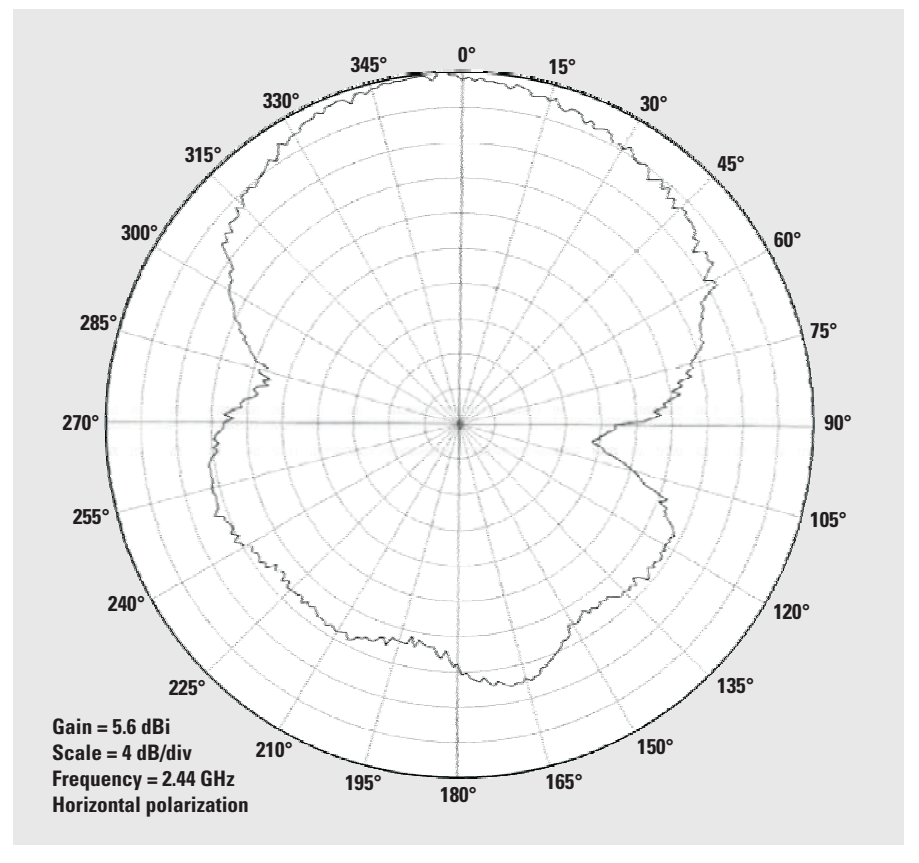
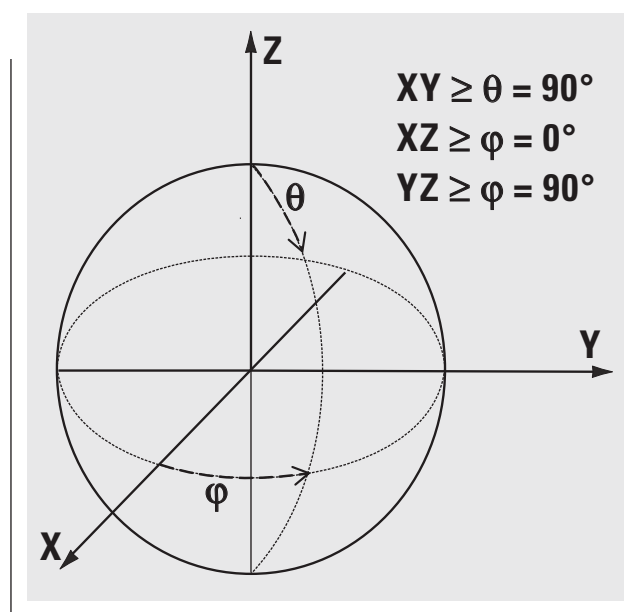


Figure 3. Spherical coordinate system



smaller circle, the emission level is reduced by 4 dB. Compared to an isotropic antenna, the PCB antenna will have a 5.6-dB higher level of radiation in the 0° direction.

As shown by Equation 1, antenna gain, G , is defined as the ratio of maximum-to-average radiation intensity multiplied by the efficiency of the antenna.

$$G = e \times D = \frac{P_{\text{rad}}}{P_{\text{in}}} \times D = \frac{P_{\text{rad}}}{P_{\text{in}}} \times \frac{U_{\text{max}}}{U_{\text{avg}}}, \quad (1)$$

where U_{max} is the maximum radiation intensity, U_{avg} is the average intensity, and the ratio of these two values is known as directivity, D . Ohmic losses in the antenna element and reflections at the antenna feed point determine the efficiency, e , which is simply the radiated power, P_{rad} , divided by the input power, P_{in} . High gain does not automatically mean that the antenna has good performance. Typically, mobile systems require an omnidirectional radiation pattern so the performance will be about the same for any antenna orientation. For an application where both the receiver and the transmitter have fixed positions, higher performance can be achieved when the antennas are positioned to direct their high-gain lobes toward each other.

To accurately measure an antenna radiation pattern, it is important to measure only the direct wave from the device under test and avoid reflecting waves that could affect the result. To minimize picking up reflected energy, measurements are often performed in an anechoic chamber or at an antenna range. Another requirement is that the measured signal must be a plane wave in the far field of the antenna. The far field distance, R_f , is determined by the wavelength, λ , and the largest antenna dimension, DIM, as shown by Equation 2. Since the size of anechoic chambers is limited, it is common to test large, low-frequency antennas in outdoor ranges.

$$R_f = \frac{2 \times \text{DIM}^2}{\lambda} \quad (2)$$

Polarization

Polarization describes the direction of the electric field. All electromagnetic waves propagating in free space have electric and magnetic fields perpendicular to the direction of propagation. When considering polarization, the electric-field vector is usually described and the magnetic field is ignored because it is perpendicular and proportional to the electric field. To obtain optimum performance, the receiving and transmitting antenna should have the same polarization. In practice, most antennas in short-range applications will produce a field with polarization in more than one direction. Reflections change the polarization of an electromagnetic wave. Since indoor equipment experiences a lot of reflections, polarization is not as critical as it is with equipment operating outside with line-of-sight limitations.

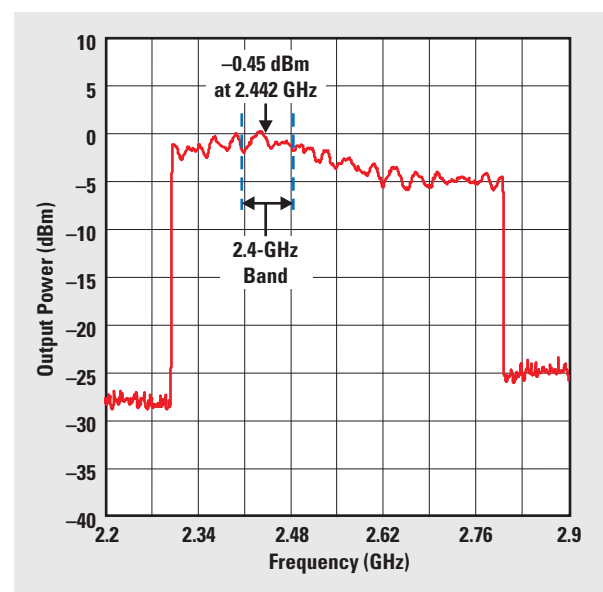
Bandwidth and impedance matching

Two common methods to determine antenna bandwidth are: 1) measuring the radiated power while stepping a carrier across the frequency band of interest, and 2) measuring the reflection at the antenna feed point with a network analyzer. Figure 4 shows the first method which is measurement of radiated power from a 2.4-GHz antenna that has approximately 2-dB variation in output power across the 2.4-GHz frequency band and has maximum radiation near the center of this band. This measurement was done by stepping a continuous-wave signal from 2.3 GHz to 2.8 GHz. Such measurements should be performed in an anechoic chamber to obtain a correct absolute level. However, this measurement can be very useful even if an anechoic chamber is not available.

Measurement in an ordinary lab environment can give a relative result that shows if the antenna has optimum performance in the middle of the desired frequency band. The performance characteristics of the receiving antenna being used to conduct the measurement will affect results. Therefore, it is important that this antenna has approximately the same performance across the measured frequency band. This precaution will help ensure that the observed relative change in performance across the measured frequency band is valid.

The second method to characterize antenna bandwidth is to measure the reflected power at the antenna feed

Figure 4. Bandwidth of a 2.4-GHz antenna



point. Disconnecting the antenna and connecting a network analyzer with a coax cable to the antenna allows such a measurement. The bandwidth of an antenna is typically defined as the frequency range for which the reflection is lower than -10 dB or the VSWR is less than 2. This is equivalent to the frequency range where less than 10% of the available power is reflected by the antenna. More information about reflection measurements can be found in Reference 1.

Size, cost and performance

The ideal antenna is infinitely small, has zero cost and has excellent performance. In real life, however, a compromise between parameters is necessary. For example, decreasing the operating frequency by a factor of two can double the RF range. Thus, one of the reasons to operate at a lower frequency is often to achieve longer range. The down side is that most antennas need to be larger at lower frequencies to achieve good performance. In some cases where the board space is limited, a small, efficient high-frequency antenna may provide equal or greater range performance than a small, inefficient low-frequency antenna. A chip antenna is good alternative when seeking a small antenna solution. This is particularly true with frequencies below 1 GHz because the chip antenna will allow a much smaller solution than the traditional PCB antenna. The main drawbacks with chip antennas are the increased cost and typically narrow-band performance.

Antenna reference designs

Texas Instruments (TI) offers a wide range of RF products that are design to operate in license-free frequency bands. The newest products consist of the CC11xx, CC24xx, and CC25xx families. TI also offers several antenna reference designs. Each reference design includes documentation of the antenna dimensions and the measured performance. Since the size and shape of the ground plane affects antenna performance, implementing the reference designs on a PCB with different ground-plane shapes and sizes may produce slightly different results. It is important to carefully copy the exact dimensions of the antenna to obtain optimum performance. No ground plane or traces should be placed beneath the antenna. Reference 2 gives an overview of available antenna reference designs and provides links to the relevant documentation.

References

For more information related to this article, you can download an Acrobat Reader file at www.ti.com/litv/pdf/litnumber and replace “litnumber” with the **TI Lit. #** for the materials listed below.

Document Title	TI Lit. #
1. DN001, “Antenna measurement with network analyzer”swra096
2. AN058, “Antenna Selection Guide”swra161

Related Web sites

RF/IF and ZigBee® Solutions: www.ti.com/lpw
 Low-Power RF Selection Guide:
www-s.ti.com/sc/techlit/slab052

IMPORTANT NOTICE

Texas Instruments Incorporated and its subsidiaries (TI) reserve the right to make corrections, modifications, enhancements, improvements, and other changes to its products and services at any time and to discontinue any product or service without notice. Customers should obtain the latest relevant information before placing orders and should verify that such information is current and complete. All products are sold subject to TI's terms and conditions of sale supplied at the time of order acknowledgment.

TI warrants performance of its hardware products to the specifications applicable at the time of sale in accordance with TI's standard warranty. Testing and other quality control techniques are used to the extent TI deems necessary to support this warranty. Except where mandated by government requirements, testing of all parameters of each product is not necessarily performed.

TI assumes no liability for applications assistance or customer product design. Customers are responsible for their products and applications using TI components. To minimize the risks associated with customer products and applications, customers should provide adequate design and operating safeguards.

TI does not warrant or represent that any license, either express or implied, is granted under any TI patent right, copyright, mask work right, or other TI intellectual property right relating to any combination, machine, or process in which TI products or services are used. Information published by TI regarding third-party products or services does not constitute a license from TI to use such products or services or a warranty or endorsement thereof. Use of such information may require a license from a third party under the patents or other intellectual property of the third party, or a license from TI under the patents or other intellectual property of TI.

Reproduction of information in TI data books or data sheets is permissible only if reproduction is without alteration and is accompanied by all associated warranties, conditions, limitations, and notices. Reproduction of this information with alteration is an unfair and deceptive business practice. TI is not responsible or liable for such altered documentation.

Resale of TI products or services with statements different from or beyond the parameters stated by TI for that product or service voids all express and any implied warranties for the associated TI product or service and is an unfair and deceptive business practice. TI is not responsible or liable for any such statements.

Following are URLs where you can obtain information on other Texas Instruments products and application solutions:

Products

Amplifiers	amplifier.ti.com
Data Converters	dataconverter.ti.com
DSP	dsp.ti.com
Interface	interface.ti.com
Logic	logic.ti.com
Power Management	power.ti.com
Microcontrollers	microcontroller.ti.com

Applications

Audio	www.ti.com/audio
Automotive	www.ti.com/automotive
Broadband	www.ti.com/broadband
Digital control	www.ti.com/digitalcontrol
Military	www.ti.com/military
Optical Networking	www.ti.com/opticalnetwork
Security	www.ti.com/security
Telephony	www.ti.com/telephony
Video & Imaging	www.ti.com/video
Wireless	www.ti.com/wireless

TI Worldwide Technical Support

Internet

TI Semiconductor Product Information Center Home Page
support.ti.com

TI Semiconductor KnowledgeBase Home Page
support.ti.com/sc/knowledgebase

Product Information Centers

Americas

Phone	+1(972) 644-5580	Fax	+1(972) 927-6377
Internet/Email	support.ti.com/sc/pic/americas.htm		

Europe, Middle East, and Africa

Phone

European Free Call	00800-ASK-TEXAS (00800 275 83927)
International	+49 (0) 8161 80 2121
Russian Support	+7 (4) 95 98 10 701

Note: The European Free Call (Toll Free) number is not active in all countries. If you have technical difficulty calling the free call number, please use the international number above.

Fax	+(49) (0) 8161 80 2045
Internet	support.ti.com/sc/pic/euro.htm

Japan

Fax

International	+81-3-3344-5317	Domestic	0120-81-0036
Internet/Email	support.ti.com/sc/pic/japan.htm		
International	support.ti.com/sc/pic/japan.htm		
Domestic	www.tij.co.jp/pic		

Asia

Phone

International	+886-2-23786800		
Domestic	Toll-Free Number		Toll-Free Number
Australia	1-800-999-084	Malaysia	1-800-80-3973
China	800-820-8682	New Zealand	0800-446-934
Hong Kong	800-96-5941	Philippines	1-800-765-7404
India	+91-80-41381665 (Toll)	Singapore	800-886-1028
Indonesia	001-803-8861-1006	Taiwan	0800-006800
Korea	080-551-2804	Thailand	001-800-886-0010
Fax	+886-2-2378-6808	Email	tiasia@ti.com
Internet	support.ti.com/sc/pic/asia.htm		ti-china@ti.com

C010208

Safe Harbor Statement: This publication may contain forward-looking statements that involve a number of risks and uncertainties. These "forward-looking statements" are intended to qualify for the safe harbor from liability established by the Private Securities Litigation Reform Act of 1995. These forward-looking statements generally can be identified by phrases such as TI or its management "believes," "expects," "anticipates," "foresees," "forecasts," "estimates" or other words or phrases of similar import. Similarly, such statements herein that describe the company's products, business strategy, outlook, objectives, plans, intentions or goals also are forward-looking statements. All such forward-looking statements are subject to certain risks and uncertainties that could cause actual results to differ materially from those in forward-looking statements. Please refer to TI's most recent Form 10-K for more information on the risks and uncertainties that could materially affect future results of operations. We disclaim any intention or obligation to update any forward-looking statements as a result of developments occurring after the date of this publication.

Trademarks: All trademarks are the property of their respective owners.

Mailing Address: Texas Instruments
Post Office Box 655303
Dallas, Texas 75265

© 2008 Texas Instruments Incorporated