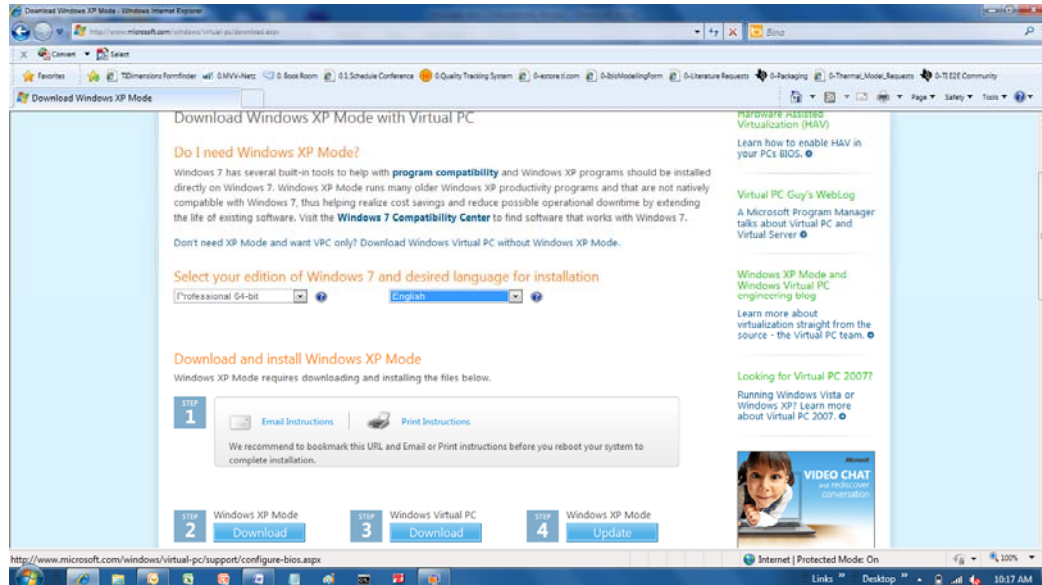


Instructions to install CTP GUIs and run in Windows 7

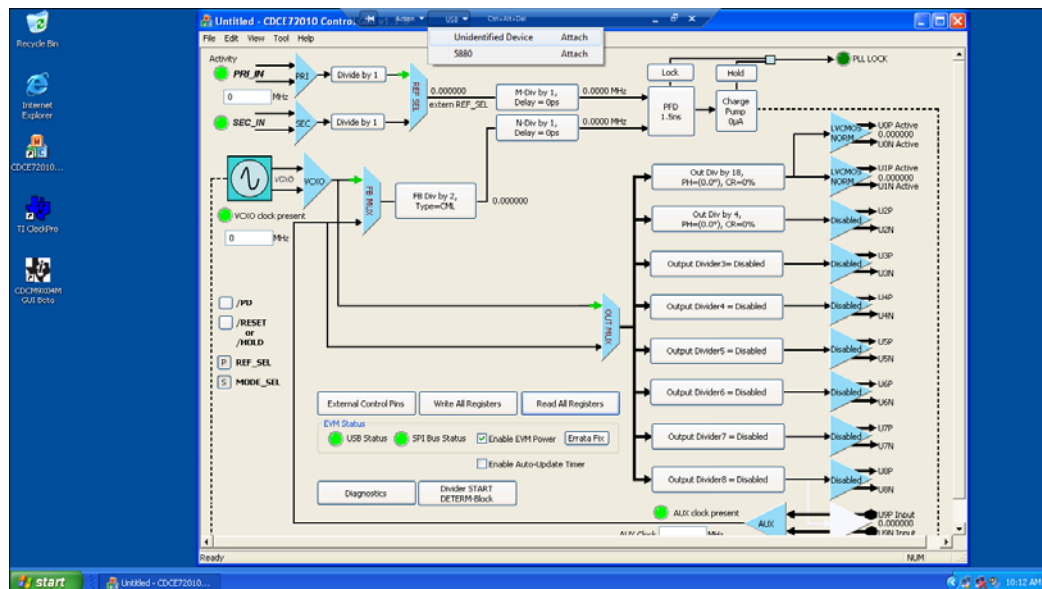
Step1. Install virtual PC:

<http://www.microsoft.com/windows/virtual-pc/download.aspx>



Step2. Install the GUI of interest in your Virtual PC

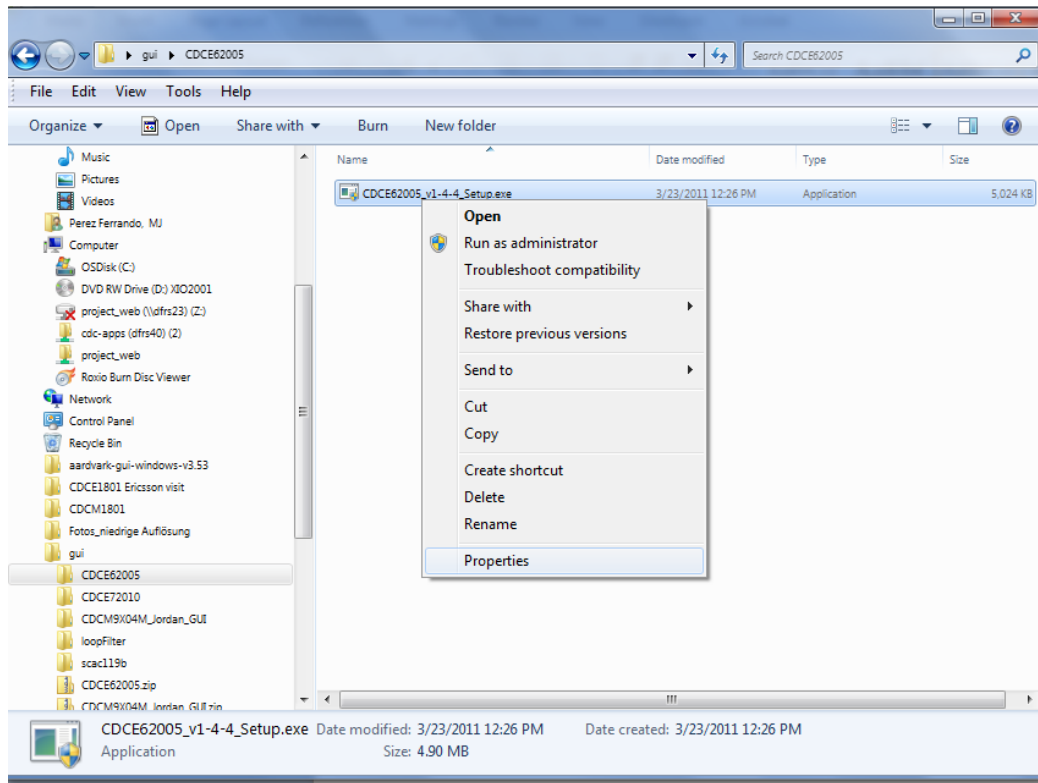
Step3. In order to communicate with the board, “Attach” the board to the virtual PC as shown in the picture below



Note. If you only need to run the GUIs in local mode, Virtual PC will not be necessary if you are administrator of your PC.

In that case, install the software as administrator.

-Right click on the installer exe:



-Select Properties, and go to the Compatibility tab control, and configure it as in the image below.

