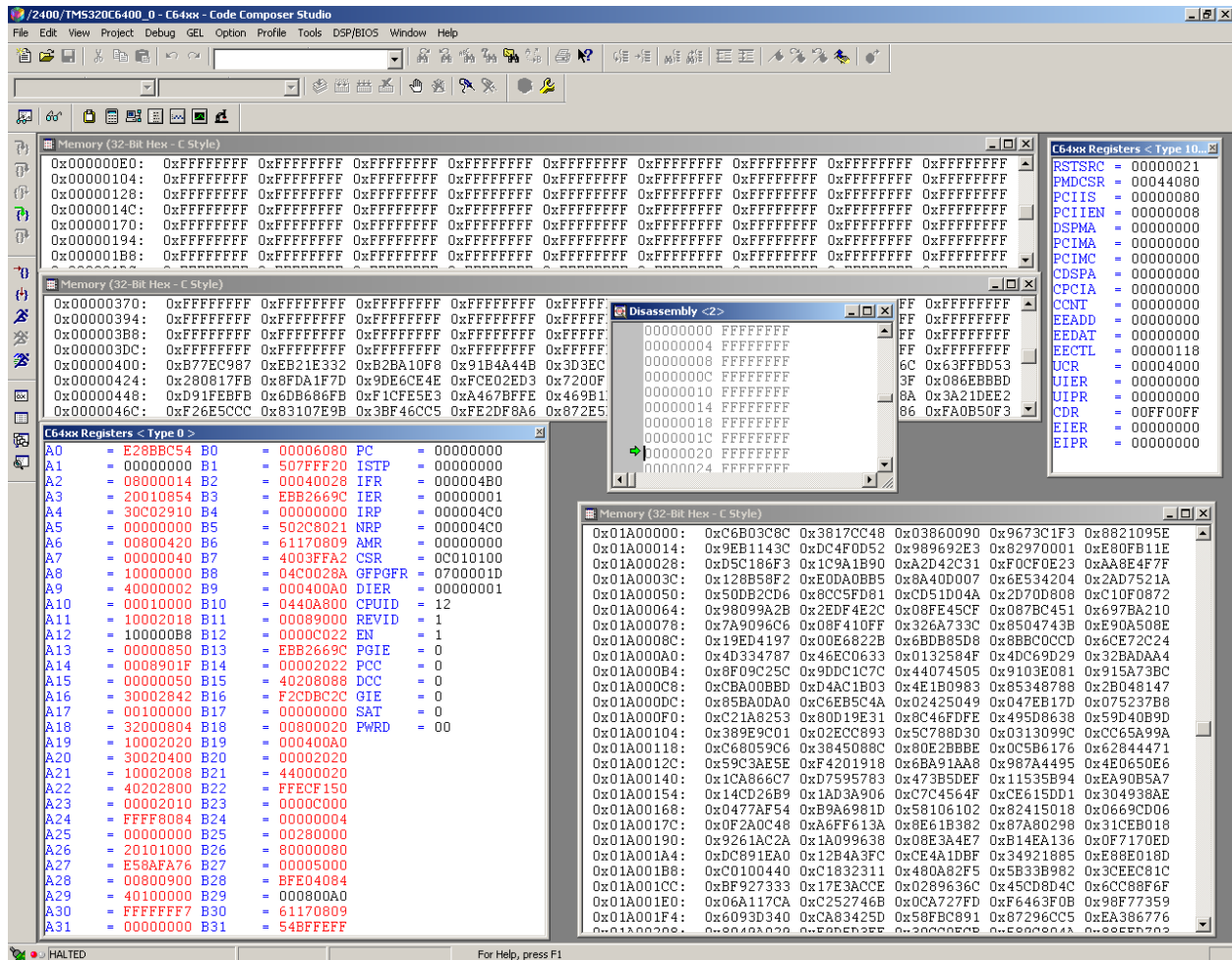


These scenarios are screenshots taken following a power-up, and release from Reset of the DSP. No PCI accesses are performed.

The 1<sup>st</sup> screenshot shows the PC at zero, the 2<sup>nd</sup> does not. Both conditions would cause failures, but because we are not writing to PCI, we do not have a “pass” condition. My belief is that a PASS condition is identical, but the timing would be such that the FFs would be replaced by the Gpp test data. In most (but not all) failure conditions, the PC is non-zero.

The 3<sup>rd</sup> screenshot shows a scenario where not ALL of the 1<sup>st</sup> 1k contains FFs, but contains some other data.



TM5320C6400\_0 - C64xx - Code Composer Studio

File Edit View Project Debug GEL Option Profile Tools DSP/BIOS Window Help

---

Memory (32-Bit Hex - C Style)

```

0x000000E0: 0xFFFFFFFF 0xFFFFFFFF 0xFFFFFFFF
0x00000104: 0xFFFFFFFF 0xFFFFFFFF 0xFFFFFFFF
0x00000128: 0xFFFFFFFF 0xFFFFFFFF 0xFFFFFFFF
0x0000014C: 0xFFFFFFFF 0xFFFFFFFF 0xFFFFFFFF
0x00000170: 0xFFFFFFFF 0xFFFFFFFF 0xFFFFFFFF
0x00000194: 0xFFFFFFFF 0xFFFFFFFF 0xFFFFFFFF
0x000001B8: 0xFFFFFFFF 0xFFFFFFFF 0xFFFFFFFF
0x00000360: 0xFFFFFFFF 0xFFFFFFFF 0xFFFFFFFF
0x00000384: 0xFFFFFFFF 0xFFFFFFFF 0xFFFFFFFF
0x000003A8: 0xFFFFFFFF 0xFFFFFFFF 0xFFFFFFFF
0x000003CC: 0xFFFFFFFF 0xFFFFFFFF 0xFFFFFFFF
0x000003F0: 0xFFFFFFFF 0xFFFFFFFF 0xFFFFFFFF
0x00000414: 0x124A6BF4 0x6FAF3933 0x2DD6876C 0x63FFBD73 0x2C0C17FB 0x8FDA1F7D 0x9DE6CE4E 0xFCE02ED3 0x7A00F8C3
0x00000438: 0x04E2ECDE 0xB90587D6 0x691A873F 0x086EBBAD 0xD91ECBFB 0x6DB866FB 0xF18FE5E3 0xA467BFFE 0x469B1DF6
0x0000045C: 0xB26BD6CA 0xA595DA44 0xFF0B2A8A 0x3A21DEE2 0xF26E5C0C 0x87107E9B 0x3BFC6CC4 0xEC2DF8A6 0x872E4EE1

```

Disassembly

```

FFF6B40C 00000000 NOP
FFF6B410 14200914 .word 0x14200914
FFF6B414 00000000 NOP
FFF6B418 14200914 .word 0x14200914
FFF6B41C 00000000 NOP
FFF6B420 14200914 .word 0x14200914
FFF6B424 00000000 NOP
FFF6B428 14200914 .word 0x14200914
FFF6B42C 00000000 NOP
FFF6B430 14200914 .word 0x14200914
FFF6B434 00000000 NOP

```

C64xx Registers <Type 10>

```

RSTSRC = 00000021
FMDCSR = 00044080
PCIIIS = 00000008
DSIENA = 00000000
PCIMA = 00000000
PCIMC = 00000000
CDSFA = 00000000
PCPIA = 00000000
CCNT = 00000000
EADD = 00000000
EEDAT = 00000000
EECTL = 00000118
UCR = 00004000
UIER = 00000000
UIPR = 00000000
CDR = 00FF00FF
EIER = 00000000
EIPR = 00000000

```

---

C64xx Registers <Type 0>

```

A0 = E28B5C B0 = 00060000 PC = FFF6B418
A1 = DFFE1B F0 B1 = 507FA98 ISTR = 00000000
A2 = 1800001C B2 = 00040002 IFR = 000004B0
A3 = 61002854 B3 = FFFD4DB IER = 00000001
A4 = 30E02118 B4 = 00880004 IRP = 663377A0
A5 = 00000000 B5 = 40688031 NRP = 663377A0
A6 = 00A00438 B6 = 00003BFF AMR = 00000000
A7 = 00400048 B7 = 00060000 CSR = 0C010300
A8 = 00007794 B8 = 06E0020A GPPQFR = 0700001D
A9 = 0000005D B9 = E85200A0 DIER = 00000001
A10 = 10010068 B10 = 0641A808 CPUID = 12
A11 = FFFFFFFF B11 = BF480F78 REVID = 1
A12 = 10200088 B12 = 00004002 EN = 1
A13 = 000008F0 B13 = FFFFBE2E PGIE = 0
A14 = 000000DD B14 = 00042002 PCC = 0
A15 = 91202058 B15 = 00000000 DCC = 0
A16 = 00000001 B16 = 02000002 GIE = 0
A17 = 40000000 B17 = DBECC66A SAT = 1
A18 = BF480F71 B18 = 7BBFEDFD PWRD = 00
A19 = 000000DD B19 = 0F8400A0
A20 = 30020418 B20 = FFFFEDEF
A21 = 10002008 B21 = FFFFD094
A22 = 00000000 B22 = 00000000
A23 = 00082010 B23 = 56BFFEFF
A24 = 1420091C B24 = FFFFFFFF
A25 = 00000000 B25 = 000000FF
A26 = 20101000 B26 = 80810000
A27 = 00005B9F B27 = 000014F8
A28 = 10802988 B28 = BFE30001
A29 = 40000000 B29 = 000800A0
A30 = FF77FFF3 B30 = 00000006
A31 = 000093E7 B31 = FFFFE9F

```

Memory (32-Bit Hex - C Style)

```

0x01A00000: 0xC6B03C8C 0x3817CC48 0x03860090 0x9673C1F3 0x8821095F
0x01A00014: 0x1EB1141C 0xDC4F4D52 0x986692E3 0x82950001 0xE80FB11E
0x01A00028: 0xD5C186F3 0x1C9A1390 0xA2D56421 0xF0CFE223 0xAA8E4F7F
0x01A0003C: 0x128F58F2 0x60DA0BB5 0x8E400007 0x6E734A04 0x2AD7521A
0x01A00050: 0x50DB2ED2 0x8CC5FD85 0xCDS1004A 0x2D70D808 0x610F0872
0x01A00064: 0x98099A2B 0x2ED7CE0C 0x08FA45CF 0x087BC451 0x69FBA212
0x01A00078: 0x7AB09FC6 0x08F410FF 0x32EA733C 0x8504743B 0x90A508E
0x01A0008C: 0x19EC4197 0x00E6822B 0x6FDB85D8 0x8B8C0D4D 0x6CE72C24
0x01A000A0: 0x4F32C787 0x47EC0631 0x01325847 0x4DC69D29 0x32BADAA4
0x01A000B4: 0x8F01C25C 0x9DDC3C7C 0x44074507 0x9103E081 0x914A73BC
0x01A000C8: 0xCBA00BF8 0xD4AC1B03 0x461B0D83 0x85348788 0x2B0C8147
0x01A000DC: 0x85BA0DA0 0x8EBE5C4A 0x22420049 0x047E179 0x075237B8
0x01A000F0: 0xC25A8253 0x80D11A31 0x8C46DFDE 0x495D8638 0x59D40B9D
0x01A00104: 0x38DE9C01 0x02ECC893 0x0D788D38 0x031109DC 0xCC65A99A
0x01A00118: 0xC68259C6 0x3845088E 0x80E2BBBA 0x2C5B6176 0x62844471
0x01A0012C: 0x59C3AE5E 0xF4201918 0x6BE90AA8 0x987A448D 0x460450E6
0x01A00140: 0x9CA046C7 0xD3595383 0x473B7DAF 0x11535B54 0xEA82B5A7
0x01A00154: 0x14CC26B1 0x1AD3A906 0xC7C4524F 0xCE615DD1 0x384938AE
0x01A00168: 0x0477CF54 0xA9A6981D 0x5A107142 0x82415018 0x06698F04
0x01A0017C: 0x0F2A0C48 0xA6DF613A 0x8C61B382 0x87A00298 0x31CEB018
0x01A00190: 0x9261AC2A 0x1A099638 0x083E34E7 0xB14EA137 0x0F7170ED
0x01A001A4: 0xDC891EA0 0x12B4A3FC 0xCA4A1DFB 0x34921885 0xE88E018D
0x01A001B8: 0xC0900440 0x18B0311 0x480A82F5 0x5B339182 0x3AEFC818
0x01A001CC: 0xBD927333 0x17E3ACCE 0x0289636C 0x44C88D4C 0x6CC88F6F
0x01A001E0: 0x36E517CA 0x82527C6B 0x0C2727FC 0xF6463F0B 0x98F77358
0x01A001F4: 0x6093D340 0xDA81425D 0x58FBC891 0x87296C05 0xEA304776
0x01A00208: 0x8040402D 0x88F82E2E 0x30000000 0x88000000 0x88000000

```

HALTED For Help, press F1

Code Composer Studio interface showing memory and register views for a TM5320C6400\_0 device.

**Memory (32-Bit Hex - C Style)**

```

FFF71020 02400A02 .word 0x02400a02
FFF71024 F3009FF3 .word 0xf3009ff3
FFF71028 02400A02 .word 0x02400a02
FFF7102C F3009FF3 .word 0xf3009ff3
FFF71030 02400A02 .word 0x02400a02
FFF71034 F3009FF3 .word 0xf3009ff3
FFF71038 02400A02 .word 0x02400a02
FFF7103C F3009FF3 .word 0xf3009ff3

```

**Memory (32-Bit Hex - C Style)**

```

0x00000000: 0xFFFFFFFF 0xFFFFFFFF 0xFFFFFFFF 0xFFFFFFFF 0xFFFFFFFF 0xFFFFFFFF 0xFFFFFFFF 0xFFFFFFFF 0xFFFFFFFF 0xFFFFFFFF
0x00000004: 0xFFFFFFFF 0xFFFFFFFF 0xFFFFFFFF 0xFFFFFFFF 0xFFFFFFFF 0xFFFFFFFF 0xFFFFFFFF 0xFFFFFFFF 0xFFFFFFFF 0xFFFFFFFF
0x00000008: 0xFFFFFFFF 0xFFFFFFFF 0xFFFFFFFF 0xFFFFFFFF 0xFFFFFFFF 0xFFFFFFFF 0xFFFFFFFF 0xFFFFFFFF 0xFFFFFFFF 0xFFFFFFFF
0x0000000C: 0xFFFFFFFF 0xFFFFFFFF 0xFFFFFFFF 0xFFFFFFFF 0xFFFFFFFF 0xFFFFFFFF 0xFFFFFFFF 0xFFFFFFFF 0xFFFFFFFF 0xFFFFFFFF
0x00000010: 0xFFFFFFFF 0xFFFFFFFF 0xFFFFFFFF 0xFFFFFFFF 0xFFFFFFFF 0xFFFFFFFF 0xFFFFFFFF 0xFFFFFFFF 0xFFFFFFFF 0xFFFFFFFF
0x00000014: 0xFFFFFFFF 0xFFFFFFFF 0xFFFFFFFF 0xFFFFFFFF 0xFFFFFFFF 0xFFFFFFFF 0xFFFFFFFF 0xFFFFFFFF 0xFFFFFFFF 0xFFFFFFFF
0x00000018: 0xFFFFFFFF 0xFFFFFFFF 0xFFFFFFFF 0xFFFFFFFF 0xFFFFFFFF 0xFFFFFFFF 0xFFFFFFFF 0xFFFFFFFF 0xFFFFFFFF 0xFFFFFFFF
0x0000001C: 0xFFFFFFFF 0xFFFFFFFF 0xFFFFFFFF 0xFFFFFFFF 0xFFFFFFFF 0xFFFFFFFF 0xFFFFFFFF 0xFFFFFFFF 0xFFFFFFFF 0xFFFFFFFF
0x00000020: 0xFFFFFFFF 0xFFFFFFFF 0xFFFFFFFF 0xFFFFFFFF 0xFFFFFFFF 0xFFFFFFFF 0xFFFFFFFF 0xFFFFFFFF 0xFFFFFFFF 0xFFFFFFFF
0x00000024: 0xFFFFFFFF 0xFFFFFFFF 0xFFFFFFFF 0xFFFFFFFF 0xFFFFFFFF 0xFFFFFFFF 0xFFFFFFFF 0xFFFFFFFF 0xFFFFFFFF 0xFFFFFFFF
0x00000028: 0xFFFFFFFF 0xFFFFFFFF 0xFFFFFFFF 0xFFFFFFFF 0xFFFFFFFF 0xFFFFFFFF 0xFFFFFFFF 0xFFFFFFFF 0xFFFFFFFF 0xFFFFFFFF
0x0000002C: 0xFFFFFFFF 0xFFFFFFFF 0xFFFFFFFF 0xFFFFFFFF 0xFFFFFFFF 0xFFFFFFFF 0xFFFFFFFF 0xFFFFFFFF 0xFFFFFFFF 0xFFFFFFFF
0x00000030: 0xFFFFFFFF 0xFFFFFFFF 0xFFFFFFFF 0xFFFFFFFF 0xFFFFFFFF 0xFFFFFFFF 0xFFFFFFFF 0xFFFFFFFF 0xFFFFFFFF 0xFFFFFFFF
0x00000034: 0xFFFFFFFF 0xFFFFFFFF 0xFFFFFFFF 0xFFFFFFFF 0xFFFFFFFF 0xFFFFFFFF 0xFFFFFFFF 0xFFFFFFFF 0xFFFFFFFF 0xFFFFFFFF
0x00000038: 0xFFFFFFFF 0xFFFFFFFF 0xFFFFFFFF 0xFFFFFFFF 0xFFFFFFFF 0xFFFFFFFF 0xFFFFFFFF 0xFFFFFFFF 0xFFFFFFFF 0xFFFFFFFF
0x0000003C: 0xFFFFFFFF 0xFFFFFFFF 0xFFFFFFFF 0xFFFFFFFF 0xFFFFFFFF 0xFFFFFFFF 0xFFFFFFFF 0xFFFFFFFF 0xFFFFFFFF 0xFFFFFFFF
0x00000040: 0xFFFFFFFF 0xFFFFFFFF 0xFFFFFFFF 0xFFFFFFFF 0xFFFFFFFF 0xFFFFFFFF 0xFFFFFFFF 0xFFFFFFFF 0xFFFFFFFF 0xFFFFFFFF
0x00000044: 0xFFFFFFFF 0xFFFFFFFF 0xFFFFFFFF 0xFFFFFFFF 0xFFFFFFFF 0xFFFFFFFF 0xFFFFFFFF 0xFFFFFFFF 0xFFFFFFFF 0xFFFFFFFF
0x00000048: 0xFFFFFFFF 0xFFFFFFFF 0xFFFFFFFF 0xFFFFFFFF 0xFFFFFFFF 0xFFFFFFFF 0xFFFFFFFF 0xFFFFFFFF 0xFFFFFFFF 0xFFFFFFFF
0x0000004C: 0xFFFFFFFF 0xFFFFFFFF 0xFFFFFFFF 0xFFFFFFFF 0xFFFFFFFF 0xFFFFFFFF 0xFFFFFFFF 0xFFFFFFFF 0xFFFFFFFF 0xFFFFFFFF
0x00000050: 0xFFFFFFFF 0xFFFFFFFF 0xFFFFFFFF 0xFFFFFFFF 0xFFFFFFFF 0xFFFFFFFF 0xFFFFFFFF 0xFFFFFFFF 0xFFFFFFFF 0xFFFFFFFF
0x00000054: 0xFFFFFFFF 0xFFFFFFFF 0xFFFFFFFF 0xFFFFFFFF 0xFFFFFFFF 0xFFFFFFFF 0xFFFFFFFF 0xFFFFFFFF 0xFFFFFFFF 0xFFFFFFFF
0x00000058: 0xFFFFFFFF 0xFFFFFFFF 0xFFFFFFFF 0xFFFFFFFF 0xFFFFFFFF 0xFFFFFFFF 0xFFFFFFFF 0xFFFFFFFF 0xFFFFFFFF 0xFFFFFFFF
0x0000005C: 0xFFFFFFFF 0xFFFFFFFF 0xFFFFFFFF 0xFFFFFFFF 0xFFFFFFFF 0xFFFFFFFF 0xFFFFFFFF 0xFFFFFFFF 0xFFFFFFFF 0xFFFFFFFF
0x00000060: 0xFFFFFFFF 0xFFFFFFFF 0xFFFFFFFF 0xFFFFFFFF 0xFFFFFFFF 0xFFFFFFFF 0xFFFFFFFF 0xFFFFFFFF 0xFFFFFFFF 0xFFFFFFFF
0x00000064: 0xFFFFFFFF 0xFFFFFFFF 0xFFFFFFFF 0xFFFFFFFF 0xFFFFFFFF 0xFFFFFFFF 0xFFFFFFFF 0xFFFFFFFF 0xFFFFFFFF 0xFFFFFFFF
0x00000068: 0xFFFFFFFF 0xFFFFFFFF 0xFFFFFFFF 0xFFFFFFFF 0xFFFFFFFF 0xFFFFFFFF 0xFFFFFFFF 0xFFFFFFFF 0xFFFFFFFF 0xFFFFFFFF
0x0000006C: 0xFFFFFFFF 0xFFFFFFFF 0xFFFFFFFF 0xFFFFFFFF 0xFFFFFFFF 0xFFFFFFFF 0xFFFFFFFF 0xFFFFFFFF 0xFFFFFFFF 0xFFFFFFFF
0x00000070: 0xFFFFFFFF 0xFFFFFFFF 0xFFFFFFFF 0xFFFFFFFF 0xFFFFFFFF 0xFFFFFFFF 0xFFFFFFFF 0xFFFFFFFF 0xFFFFFFFF 0xFFFFFFFF
0x00000074: 0xFFFFFFFF 0xFFFFFFFF 0xFFFFFFFF 0xFFFFFFFF 0xFFFFFFFF 0xFFFFFFFF 0xFFFFFFFF 0xFFFFFFFF 0xFFFFFFFF 0xFFFFFFFF
0x00000078: 0xFFFFFFFF 0xFFFFFFFF 0xFFFFFFFF 0xFFFFFFFF 0xFFFFFFFF 0xFFFFFFFF 0xFFFFFFFF 0xFFFFFFFF 0xFFFFFFFF 0xFFFFFFFF
0x0000007C: 0xFFFFFFFF 0xFFFFFFFF 0xFFFFFFFF 0xFFFFFFFF 0xFFFFFFFF 0xFFFFFFFF 0xFFFFFFFF 0xFFFFFFFF 0xFFFFFFFF 0xFFFFFFFF
0x00000080: 0xFFFFFFFF 0xFFFFFFFF 0xFFFFFFFF 0xFFFFFFFF 0xFFFFFFFF 0xFFFFFFFF 0xFFFFFFFF 0xFFFFFFFF 0xFFFFFFFF 0xFFFFFFFF
0x00000084: 0xFFFFFFFF 0xFFFFFFFF 0xFFFFFFFF 0xFFFFFFFF 0xFFFFFFFF 0xFFFFFFFF 0xFFFFFFFF 0xFFFFFFFF 0xFFFFFFFF 0xFFFFFFFF
0x00000088: 0xFFFFFFFF 0xFFFFFFFF 0xFFFFFFFF 0xFFFFFFFF 0xFFFFFFFF 0xFFFFFFFF 0xFFFFFFFF 0xFFFFFFFF 0xFFFFFFFF 0xFFFFFFFF
0x0000008C: 0xFFFFFFFF 0xFFFFFFFF 0xFFFFFFFF 0xFFFFFFFF 0xFFFFFFFF 0xFFFFFFFF 0xFFFFFFFF 0xFFFFFFFF 0xFFFFFFFF 0xFFFFFFFF
0x00000090: 0xFFFFFFFF 0xFFFFFFFF 0xFFFFFFFF 0xFFFFFFFF 0xFFFFFFFF 0xFFFFFFFF 0xFFFFFFFF 0xFFFFFFFF 0xFFFFFFFF 0xFFFFFFFF
0x00000094: 0xFFFFFFFF 0xFFFFFFFF 0xFFFFFFFF 0xFFFFFFFF 0xFFFFFFFF 0xFFFFFFFF 0xFFFFFFFF 0xFFFFFFFF 0xFFFFFFFF 0xFFFFFFFF
0x00000098: 0xFFFFFFFF 0xFFFFFFFF 0xFFFFFFFF 0xFFFFFFFF 0xFFFFFFFF 0xFFFFFFFF 0xFFFFFFFF 0xFFFFFFFF 0xFFFFFFFF 0xFFFFFFFF
0x0000009C: 0xFFFFFFFF 0xFFFFFFFF 0xFFFFFFFF 0xFFFFFFFF 0xFFFFFFFF 0xFFFFFFFF 0xFFFFFFFF 0xFFFFFFFF 0xFFFFFFFF 0xFFFFFFFF
0x000000A0: 0xFFFFFFFF 0xFFFFFFFF 0xFFFFFFFF 0xFFFFFFFF 0xFFFFFFFF 0xFFFFFFFF 0xFFFFFFFF 0xFFFFFFFF 0xFFFFFFFF 0xFFFFFFFF
0x000000A4: 0xFFFFFFFF 0xFFFFFFFF 0xFFFFFFFF 0xFFFFFFFF 0xFFFFFFFF 0xFFFFFFFF 0xFFFFFFFF 0xFFFFFFFF 0xFFFFFFFF 0xFFFFFFFF
0x000000A8: 0xFFFFFFFF 0xFFFFFFFF 0xFFFFFFFF 0xFFFFFFFF 0xFFFFFFFF 0xFFFFFFFF 0xFFFFFFFF 0xFFFFFFFF 0xFFFFFFFF 0xFFFFFFFF
0x000000AC: 0xFFFFFFFF 0xFFFFFFFF 0xFFFFFFFF 0xFFFFFFFF 0xFFFFFFFF 0xFFFFFFFF 0xFFFFFFFF 0xFFFFFFFF 0xFFFFFFFF 0xFFFFFFFF
0x000000B0: 0xFFFFFFFF 0xFFFFFFFF 0xFFFFFFFF 0xFFFFFFFF 0xFFFFFFFF 0xFFFFFFFF 0xFFFFFFFF 0xFFFFFFFF 0xFFFFFFFF 0xFFFFFFFF
0x000000B4: 0xFFFFFFFF 0xFFFFFFFF 0xFFFFFFFF 0xFFFFFFFF 0xFFFFFFFF 0xFFFFFFFF 0xFFFFFFFF 0xFFFFFFFF 0xFFFFFFFF 0xFFFFFFFF
0x000000B8: 0xFFFFFFFF 0xFFFFFFFF 0xFFFFFFFF 0xFFFFFFFF 0xFFFFFFFF 0xFFFFFFFF 0xFFFFFFFF 0xFFFFFFFF 0xFFFFFFFF 0xFFFFFFFF
0x000000BC: 0xFFFFFFFF 0xFFFFFFFF 0xFFFFFFFF 0xFFFFFFFF 0xFFFFFFFF 0xFFFFFFFF 0xFFFFFFFF 0xFFFFFFFF 0xFFFFFFFF 0xFFFFFFFF
0x000000C0: 0xFFFFFFFF 0xFFFFFFFF 0xFFFFFFFF 0xFFFFFFFF 0xFFFFFFFF 0xFFFFFFFF 0xFFFFFFFF 0xFFFFFFFF 0xFFFFFFFF 0xFFFFFFFF
0x000000C4: 0xFFFFFFFF 0xFFFFFFFF 0xFFFFFFFF 0xFFFFFFFF 0xFFFFFFFF 0xFFFFFFFF 0xFFFFFFFF 0xFFFFFFFF 0xFFFFFFFF 0xFFFFFFFF
0x000000C8: 0xFFFFFFFF 0xFFFFFFFF 0xFFFFFFFF 0xFFFFFFFF 0xFFFFFFFF 0xFFFFFFFF 0xFFFFFFFF 0xFFFFFFFF 0xFFFFFFFF 0xFFFFFFFF
0x000000CC: 0xFFFFFFFF 0xFFFFFFFF 0xFFFFFFFF 0xFFFFFFFF 0xFFFFFFFF 0xFFFFFFFF 0xFFFFFFFF 0xFFFFFFFF 0xFFFFFFFF 0xFFFFFFFF
0x000000D0: 0xFFFFFFFF 0xFFFFFFFF 0xFFFFFFFF 0xFFFFFFFF 0xFFFFFFFF 0xFFFFFFFF 0xFFFFFFFF 0xFFFFFFFF 0xFFFFFFFF 0xFFFFFFFF
0x000000D4: 0xFFFFFFFF 0xFFFFFFFF 0xFFFFFFFF 0xFFFFFFFF 0xFFFFFFFF 0xFFFFFFFF 0xFFFFFFFF 0xFFFFFFFF 0xFFFFFFFF 0xFFFFFFFF
0x000000D8: 0xFFFFFFFF 0xFFFFFFFF 0xFFFFFFFF 0xFFFFFFFF 0xFFFFFFFF 0xFFFFFFFF 0xFFFFFFFF 0xFFFFFFFF 0xFFFFFFFF 0xFFFFFFFF
0x000000DC: 0xFFFFFFFF 0xFFFFFFFF 0xFFFFFFFF 0xFFFFFFFF 0xFFFFFFFF 0xFFFFFFFF 0xFFFFFFFF 0xFFFFFFFF 0xFFFFFFFF 0xFFFFFFFF
0x000000E0: 0xFFFFFFFF 0xFFFFFFFF 0xFFFFFFFF 0xFFFFFFFF 0xFFFFFFFF 0xFFFFFFFF 0xFFFFFFFF 0xFFFFFFFF 0xFFFFFFFF 0xFFFFFFFF
0x000000E4: 0xFFFFFFFF 0xFFFFFFFF 0xFFFFFFFF 0xFFFFFFFF 0xFFFFFFFF 0xFFFFFFFF 0xFFFFFFFF 0xFFFFFFFF 0xFFFFFFFF 0xFFFFFFFF
0x000000E8: 0xFFFFFFFF 0xFFFFFFFF 0xFFFFFFFF 0xFFFFFFFF 0xFFFFFFFF 0xFFFFFFFF 0xFFFFFFFF 0xFFFFFFFF 0xFFFFFFFF 0xFFFFFFFF
0x000000EC: 0xFFFFFFFF 0xFFFFFFFF 0xFFFFFFFF 0xFFFFFFFF 0xFFFFFFFF 0xFFFFFFFF 0xFFFFFFFF 0xFFFFFFFF 0xFFFFFFFF 0xFFFFFFFF
0x000000F0: 0xFFFFFFFF 0xFFFFFFFF 0xFFFFFFFF 0xFFFFFFFF 0xFFFFFFFF 0xFFFFFFFF 0xFFFFFFFF 0xFFFFFFFF 0xFFFFFFFF 0xFFFFFFFF
0x000000F4: 0xFFFFFFFF 0xFFFFFFFF 0xFFFFFFFF 0xFFFFFFFF 0xFFFFFFFF 0xFFFFFFFF 0xFFFFFFFF 0xFFFFFFFF 0xFFFFFFFF 0xFFFFFFFF
0x000000F8: 0xFFFFFFFF 0xFFFFFFFF 0xFFFFFFFF 0xFFFFFFFF 0xFFFFFFFF 0xFFFFFFFF 0xFFFFFFFF 0xFFFFFFFF 0xFFFFFFFF 0xFFFFFFFF
0x000000FC: 0xFFFFFFFF 0xFFFFFFFF 0xFFFFFFFF 0xFFFFFFFF 0xFFFFFFFF 0xFFFFFFFF 0xFFFFFFFF 0xFFFFFFFF 0xFFFFFFFF 0xFFFFFFFF

```

**C64xx Registers < Type 0 >**

```

A0 = 0000FFFF B0 = 00046000 PC = FFF7102C
A1 = A5450000 B1 = FFFFC257 ISTR = 00000000
A2 = FFF05747 B2 = 00040008 IFR = 000004B0
A3 = 5FFF1E8C B3 = FFFD2DF IER = 00000001
A4 = 30A02900 B4 = 00000167 IRP = 263377A0
A5 = 00000000 B5 = 502C8031 NRP = 263377A0
A6 = 00800420 B6 = 000000A8 AMR = 00000000
A7 = 572E0040 B7 = 00850028 CSR = 0C010100
A8 = 06A8DF98 B8 = 04C4020A GFDFGR = 0700001D
A9 = 00005747 B9 = 000400A0 DIER = 00000001
A10 = 10010000 B10 = 0645A808 CPUID = 12
A11 = 10002058 B11 = 00089000 REVID = 1
A12 = 10200088 B12 = 00004002 EN = 1
A13 = FFFF8B8D B13 = 400A0205 PGIE = 0
A14 = 00000091 B14 = 00002002 PCC = 0
A15 = 00200050 B15 = 00005BE3 DCC = 0
A16 = 00000000 B16 = 00040082 GIE = 0
A17 = 40100000 B17 = 7FA03980 SAT = 0
A18 = 00088FF9 B18 = 0000EDEF PWRD = 00
A19 = 00000020 B19 = 000400A0
A20 = 00000000 B20 = 00000047
A21 = 10002000 B21 = 5D426CCD
A22 = 00000000 B22 = 003A1D00
A23 = 00002010 B23 = 0000C010
A24 = 34200804 B24 = 00040044
A25 = 40000040 B25 = 00280000
A26 = 000020E0 B26 = 80010000
A27 = 0000FFFF B27 = 000014F8
A28 = 10800900 B28 = BFE0BB0F
A29 = 40000000 B29 = 00006B5D
A30 = 08A00840 B30 = 97CECD02
A31 = 0000EF4B B31 = FFFFE9F

```

**C64xx Registers < Type 10 >**

```

RSTSRC = 00000021
FMDCSR = 00044080
PCIIS = 00000080
PCIEN = 00000008
DSMA = 00000000
PCIMC = 00000000
PCIMC = 00000000
CPSA = 00000000
CPCIA = 00000000
CCNT = 00000000
EADD = 00000000
EEDAT = 00000000
EECTL = 00000118
UCR = 00004000
UIER = 00000000
UIPR = 00000000
CDR = 00FF00FF
EIER = 00000000
EIPR = 00000000

```

**Memory (32-Bit Hex - C Style)**

```

0x01A00000: 0xC6B03C8C 0x3817CC48 0x03860090 0x9673C1F3 0x8821095A
0x01A00014: 0x9EB1143C 0xDC4FD052 0x989692E3 0x82970001 0xE80FB10E
0x01A00028: 0x9DC186F3 0x1C9A1390 0xA2D42C31 0xF08FE23 0xA8E4F7F
0x01A0003C: 0x128B58F0 0xE0DA0BB5 0x9E0C0007 0x6E734204 0x2AD7521A
0x01A00050: 0x50DB2ED2 0x8CC5FD81 0xCDS1004A 0x2D70DA08 0xC10B0832
0x01A00064: 0x98099A2B 0x2E5FC2C 0x08E45FC 0x087AC451 0x69FBA212
0x01A00078: 0x7AB096C6 0x08F414FD 0x32EA733C 0x8504743B 0x690C508E
0x01A0008C: 0x19ED4197 0x0066822B 0x6BDB85D8 0x8B8C08C5 0xEE72C24
0x01A000A0: 0x4D32C787 0x47EC0631 0x0122584F 0x4DE69D29 0x32BADAA4
0x01A000B4: 0x8F09C25C 0x9DDC1C7C 0x44074505 0x9103E081 0x915A73BC
0x01A000C8: 0xCB200BF 0xD4AC1B03 0x461B0983 0x85348788 0x2B0CA147
0x01A000DC: 0x852A0DA0 0xC6EB5C42 0x02425049 0x046EB17D 0x75237B8
0x01A000F0: 0xC21A8353 0x80D19E31 0x8C46FDFE 0x495D8638 0x59D40B9D
0x01A00104: 0x38DE9C01 0x02E4E893 0x1C788D30 0x1313099C 0x4C65A99A
0x01A00118: 0xC68058E6 0x3845008E 0x80E2BBBA 0x0C5B6176 0x62644471
0x01A0012C: 0x59C3AE5E 0xF4201918 0x6BA91AA8 0x987A4485 0x460650E6
0x01A00140: 0x9CA806C7 0xD7595383 0x47395DEF 0x13537BB4 0xEA92B5A7
0x01A00154: 0x14CC26B9 0x3AD3A906 0xC7C4564F 0x8E61DD1 0x394938AE
0x01A00168: 0x0477EF54 0xA9A4981D 0x5A106102 0x82415018 0x2669CE04
0x01A0017C: 0x0F2A0D4C 0xA6DF611A 0x8E23B382 0x87A00298 0x11CEB018
0x01A00190: 0x9261AC2A 0x1A099638 0x08E3A4E7 0xB14FA136 0x0F7170ED
0x01A001A4: 0xDC891EA0 0x12B4A3FC 0xCE4A1DFB 0x34921985 0xE88E0185
0x01A001B8: 0xC0100440 0xC1832311 0x480A82F5 0x5B389882 0x3EE6C818
0x01A001CC: 0xBD827333 0x07E3ACCE 0x0289636C 0x458D8D4C 0x6CC88F6F
0x01A001E0: 0x16A117CA 0xC252F46B 0x0EA727FD 0xF6463F0B 0x98F77359
0x01A001F4: 0x6493D340 0xCA83525D 0x58FB0811 0xA7296C05 0xEA384776
0x01A00208: 0x80400000 0x80400000 0x80400000 0x80400000 0x80400000

```

HALTED For Help, press F1