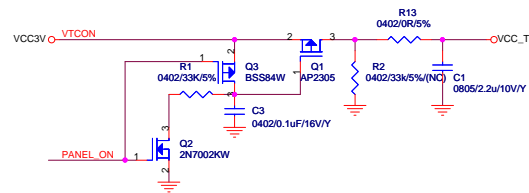


J3 HEADER 2X10MS2.54(DIP) (TOP)
J4 EPD PANEL PCB SIDE(FPC 40 Pin) (TOP)
J1 HEADER 1X10MS2.54(SMT) (BOTTOM)
J2 HEADER 1X10MS2.54(SMT) (BOTTOM)
P1.44" EPD 1.44" Size silk screen(SSTOP)
P2" EPD 2" Size silk screen(SSTOP)
P2.7" EPD 2.7" Size silk screen(SSTOP)

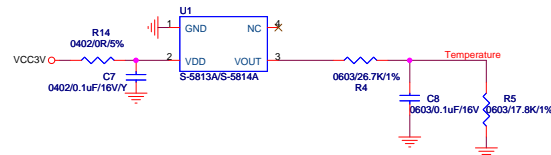
History:

V02: Modify SPI MISO & SCLK
V03: Modify J3 Pin name
V04: Add Level shift

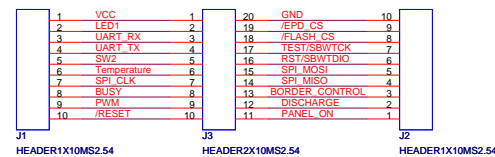
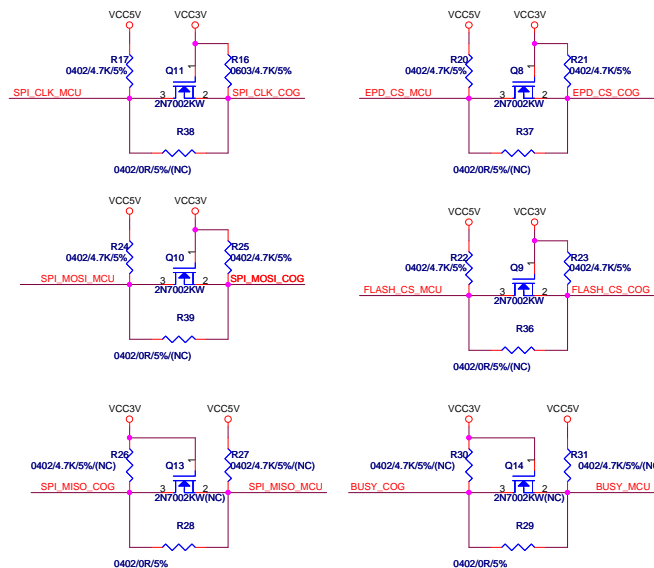
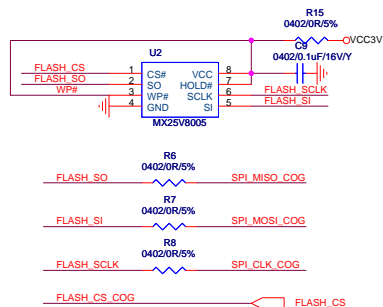
Title		
EPD extension board V2		
Size	Document Number	Rev
A	Board Placement	0.1
Date:	Wednesday, January 30, 2013	Sheet 1 of 1



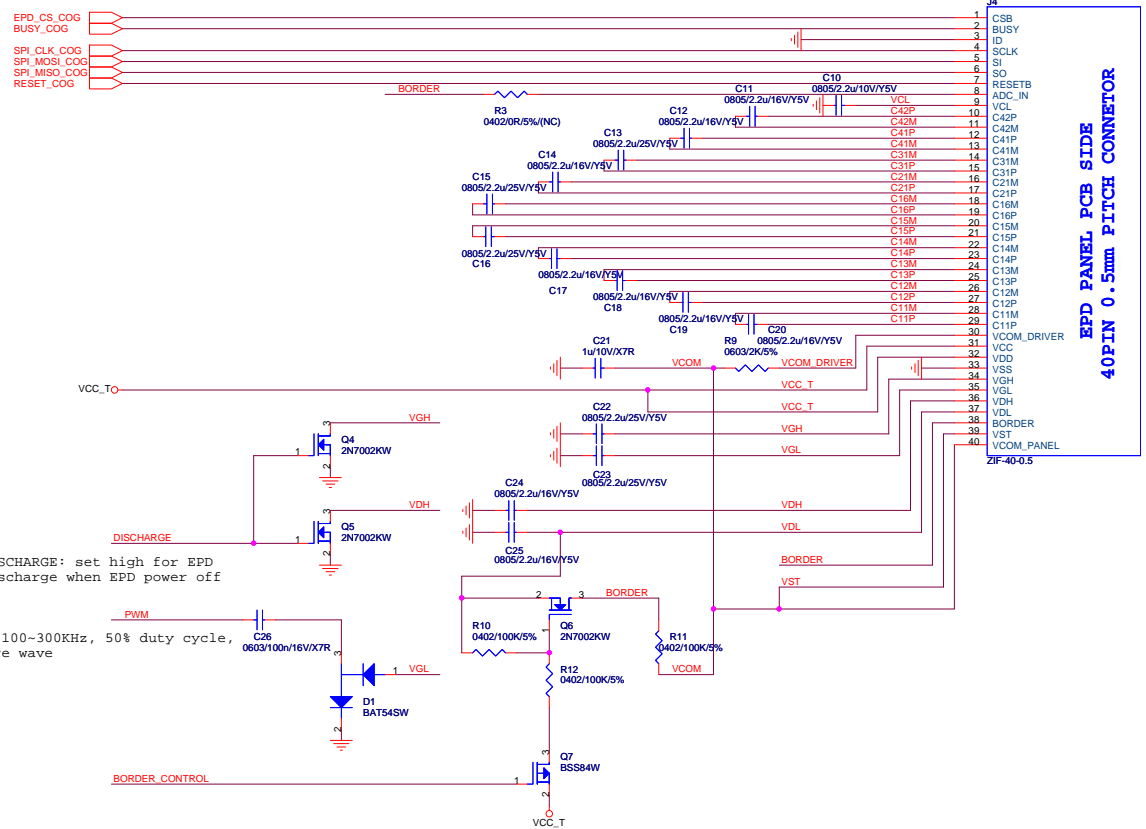
Temperature Sensor



Serial Flash 8M-bit



VCC5V VCC
EPD_CS_MCU /EPD_CS
FLASH_CS_MCU /FLASH_CS
RESET_MCU /RESET
BUSY_MCU BUSY
SPI_CLK_MCU SPI_CLK
SPI_MOSI_MCU SPI_MOSI
SPI_MISO_MCU SPI_MISO



EPD PANEL PCB SIDE
40PIN 0.5mm PITCH CONNECTOR

PERVASIVEDISPLAYS 龍亨科技股份有限公司

APPROVED:	Date:	DWG NO.:
CHECKED:	Date:	PART NO.:
DESIGNER:	Date:	Rev
DRAWER:	Date:	File

SHEET: 3 1
EPD extension board v5
TOP 01

Tuesday, February 05, 2013