

Running Analog Launch Pad (ALP) on Windows 7

Instructions for running ALP on PCs with Windows 7 operating system

1. (One-time step) Download and install Microsoft *Windows XP mode* for Windows 7

Download and install Microsoft's *Windows XP Mode* for the Windows 7 operating system by following this link:

<http://www.microsoft.com/windows/virtual-pc/download.aspx>

Follow all of the installation steps listed on Microsoft's website, as shown below.

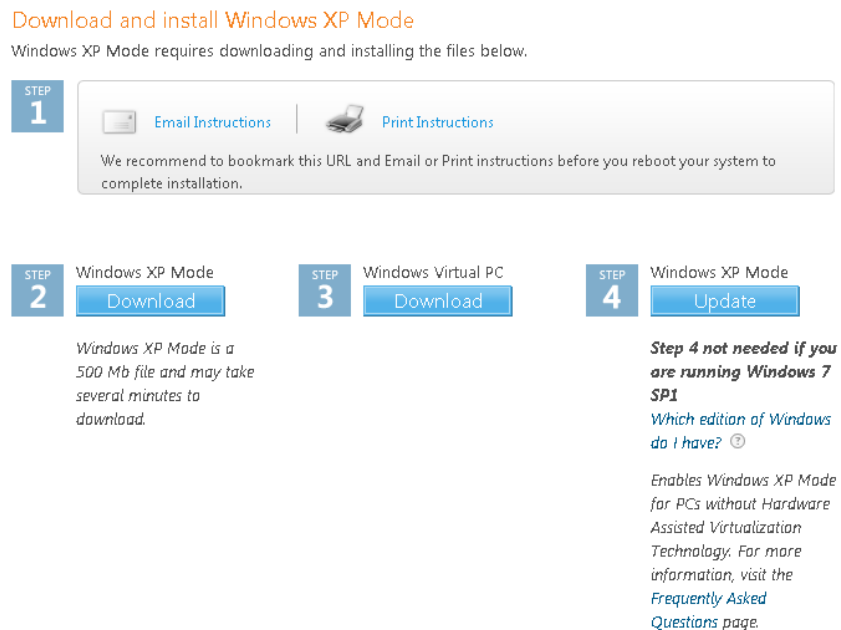


Figure 1: Installation steps on Microsoft's website

2. Launch Microsoft XP Mode

Launch Microsoft XP Mode by clicking on **Start > All Programs > Windows Virtual PC > Windows XP Mode**, as shown below.

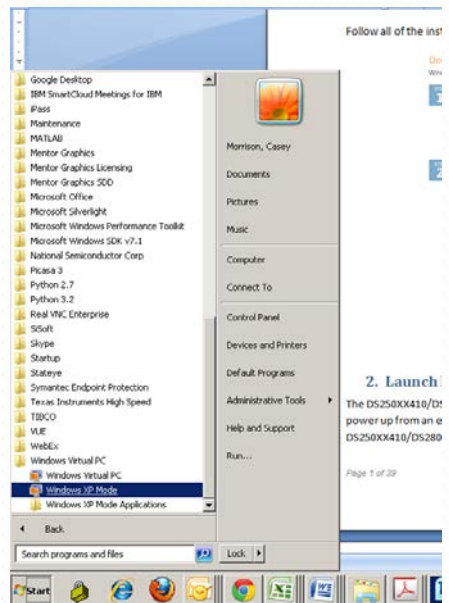


Figure 2: Launching Windows XP Mode

3. (One-time step) Install the ALP software from within Windows XP

Once Windows XP is running, install the ALP software by running the executable file provided by TI (i.e. ALP_setup_v_1_29_0009.exe). To access this file you can map to networked drives from within XP Mode or you can use a USB flash drive if the ALP installation file is located there. Follow the installations provided by the ALP installation prompts until the software is installed.

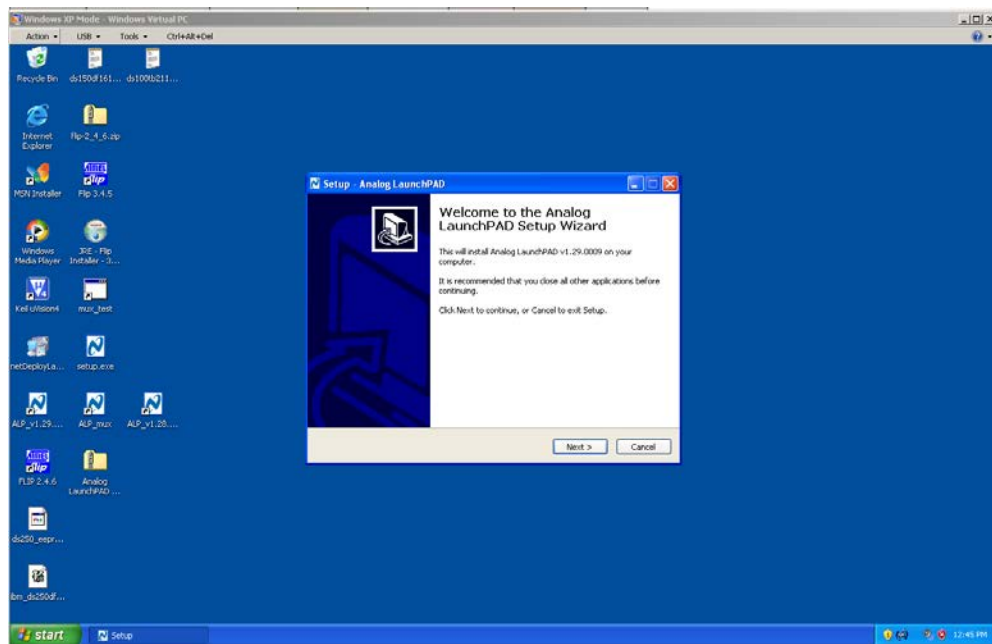


Figure 3: Installing the ALP software from within XP Mode

4. Attach the USB device to your computer

Inside your Windows XP window, and with the USB cable connected between your PC and the EVK or SPA dongle, select the USB drop-down menu at the top. Click on “NSC USB NANO Attach” as shown below. This will associate the USB device connected to your PC with Windows XP.

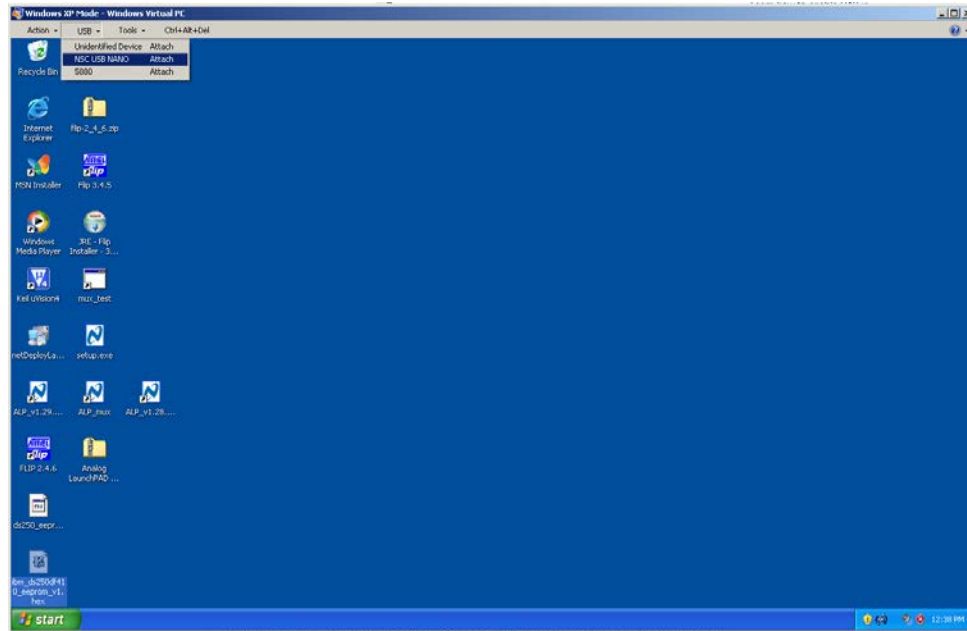


Figure 4: Attaching the USB device to Windows XP

The *first time* you attach the USB device (EVK or SPA dongle) to your PC with Windows XP running, you may get a “found new hardware” alert. If this happens, follow the dialog prompts and direct the Found New Hardware wizard to the location of the driver, which is here:

C:\Program Files\National Semiconductor Corp\Analog LaunchPAD v1.28.1041\Drivers

If you don’t get a “found new hardware” prompt even though this is the first time you plugged the EVK/SPA dongle into your PC with windows XP running, you may need to check in Device Manager (inside Windows XP) that the USB device is recognized. If it is recognized it will look something like the following:

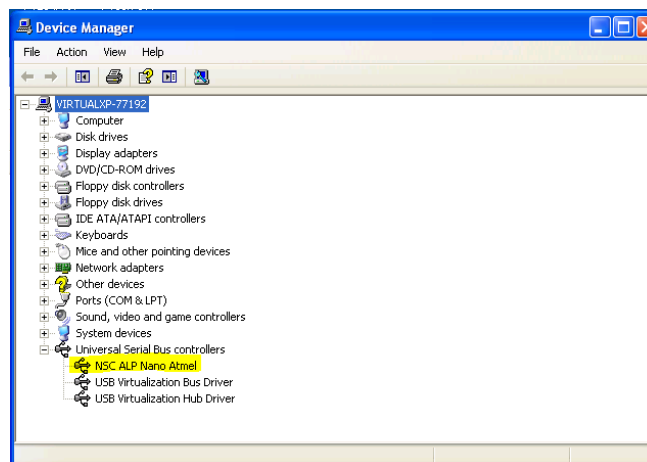


Figure 5: Device Manager inside Windows XP

If it is not recognized, it may have a question mark next to it. If this is the case, right-click on that device and click on “Update driver...” You can then point the driver update wizard to the location of the Drivers folder.

5. Launch ALP software

Now you can launch the ALP software from inside Windows XP Mode. Windows XP Mode becomes another “application” running on your PC, and the ALP software runs inside of it, so you can minimize this window and work on other Windows 7 applications simultaneously.

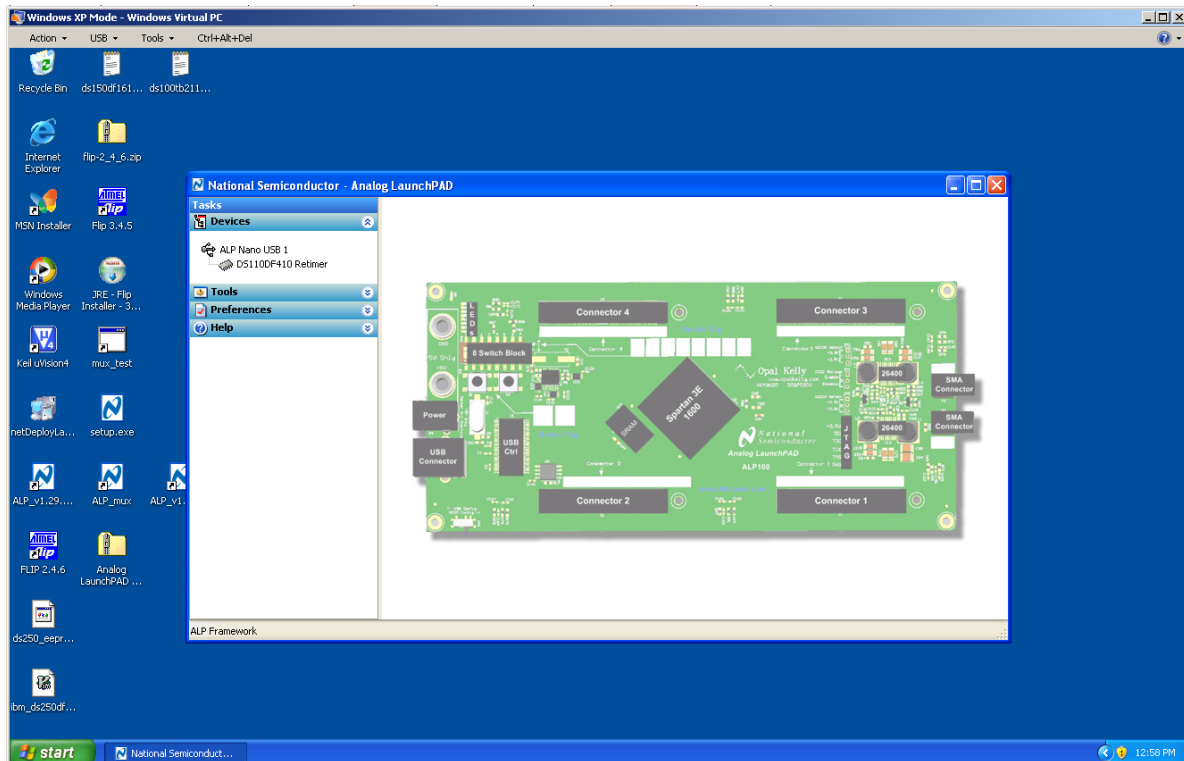


Figure 6: ALP running inside Windows XP mode

Tips

1. Do not hibernate your machine with Windows XP Mode running. It may not be able to recover. Always close down Windows XP Mode before hibernating your machine.
2. Map network drives from within Windows XP Mode just as you would otherwise. This will give you access to data on those mapped drives.