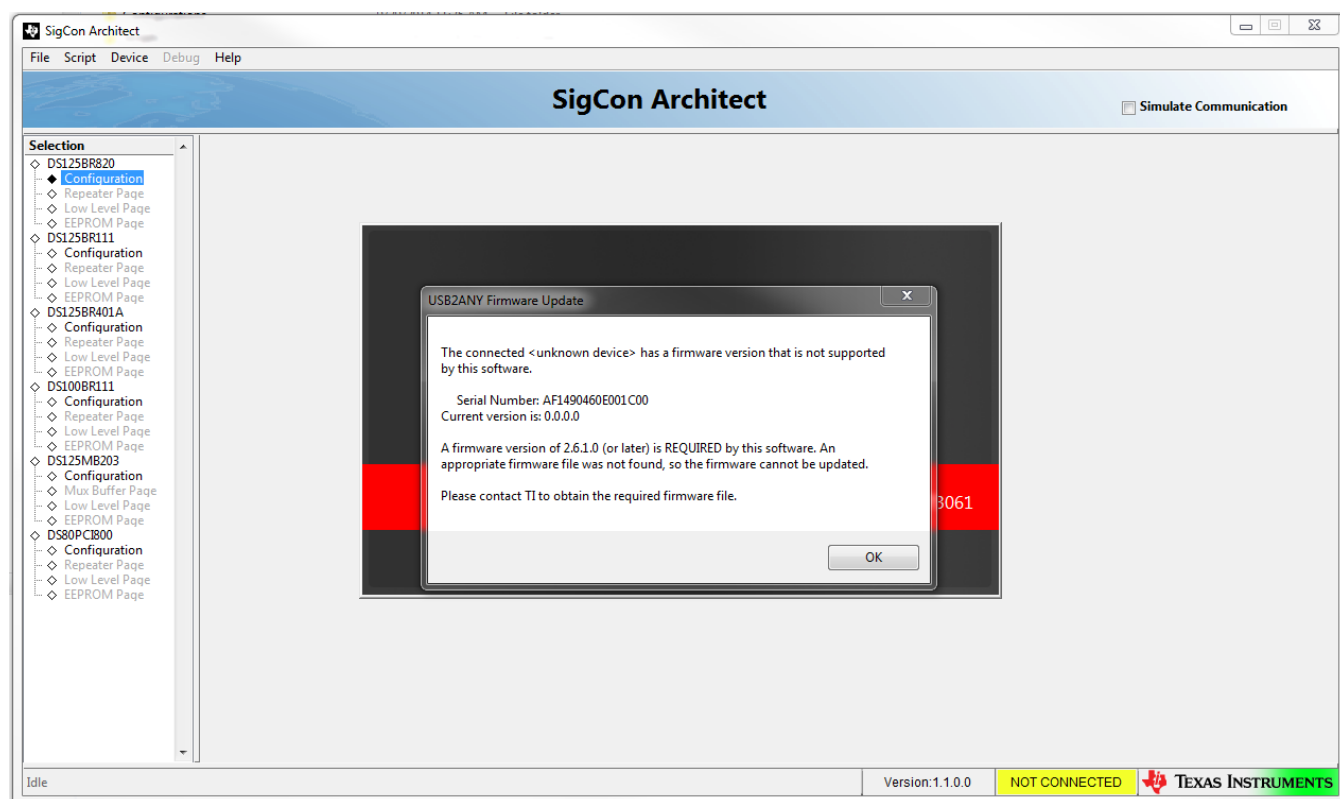


USB2ANY Firmware Loading for SigCon Architect v1.1.0.0

Michael Lu

SVA – Datapath Solutions

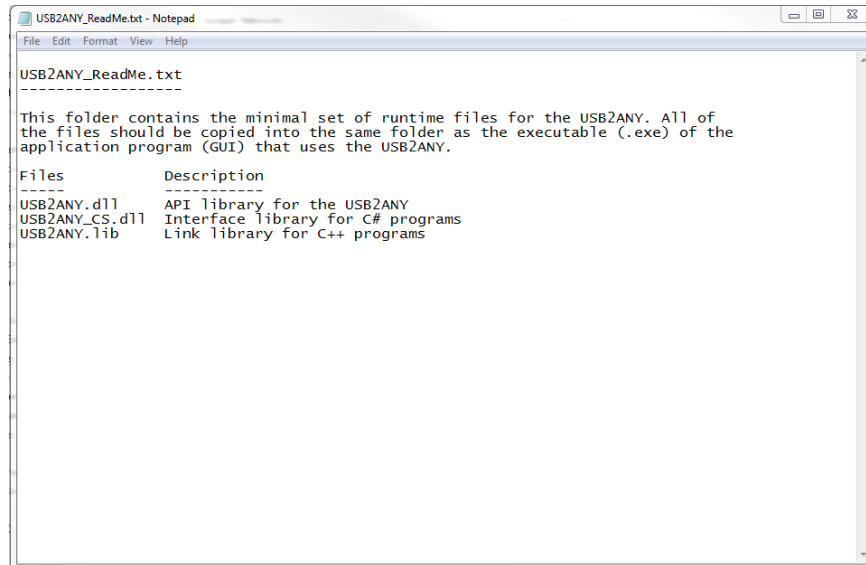
This is a quick-start guide to installing USB2ANY firmware onto a blank USB2ANY in order to use with TI's high speed signal conditioning products offered in SigCon Architect v1.1.0.0. If you experience the following issue when starting up SigCon Architect, it is likely the USB2ANY module does not have any firmware loaded onto it. The error in SigCon Architect will look similar to the following:



To install firmware, follow the steps below:

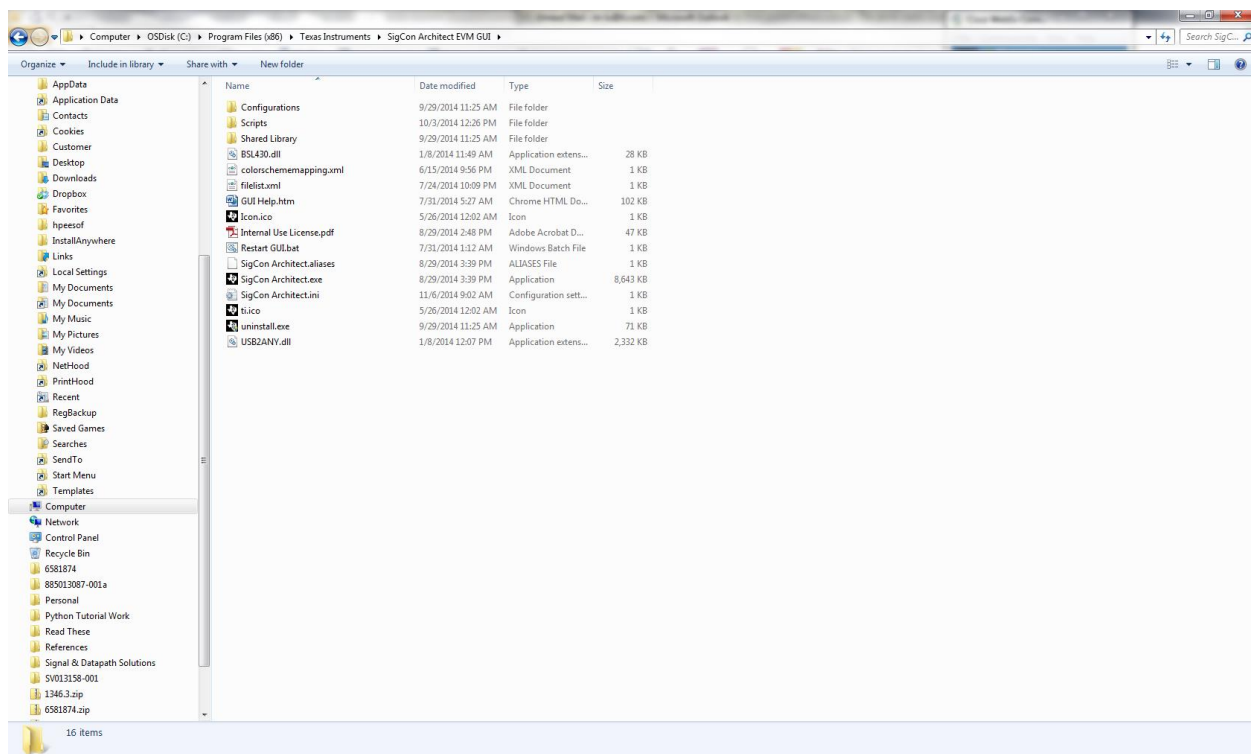
1. In firmware versions of USB2ANY v2.6.4.0 or later, the firmware loader has been integrated into an easy-to-install package that you can copy into the same directory as SigCon Architect. In order to do this, you will need the runtime USB2ANY.dll, USB2ANY_CS.dll, and USB2ANY.lib files provided by your TI contact.

- As per the USB2ANY_ReadMe.txt directions, copy all the .dll and .lib files to the directory in which SigCon Architect is installed.



For most installations, this directory will be similar to the following:

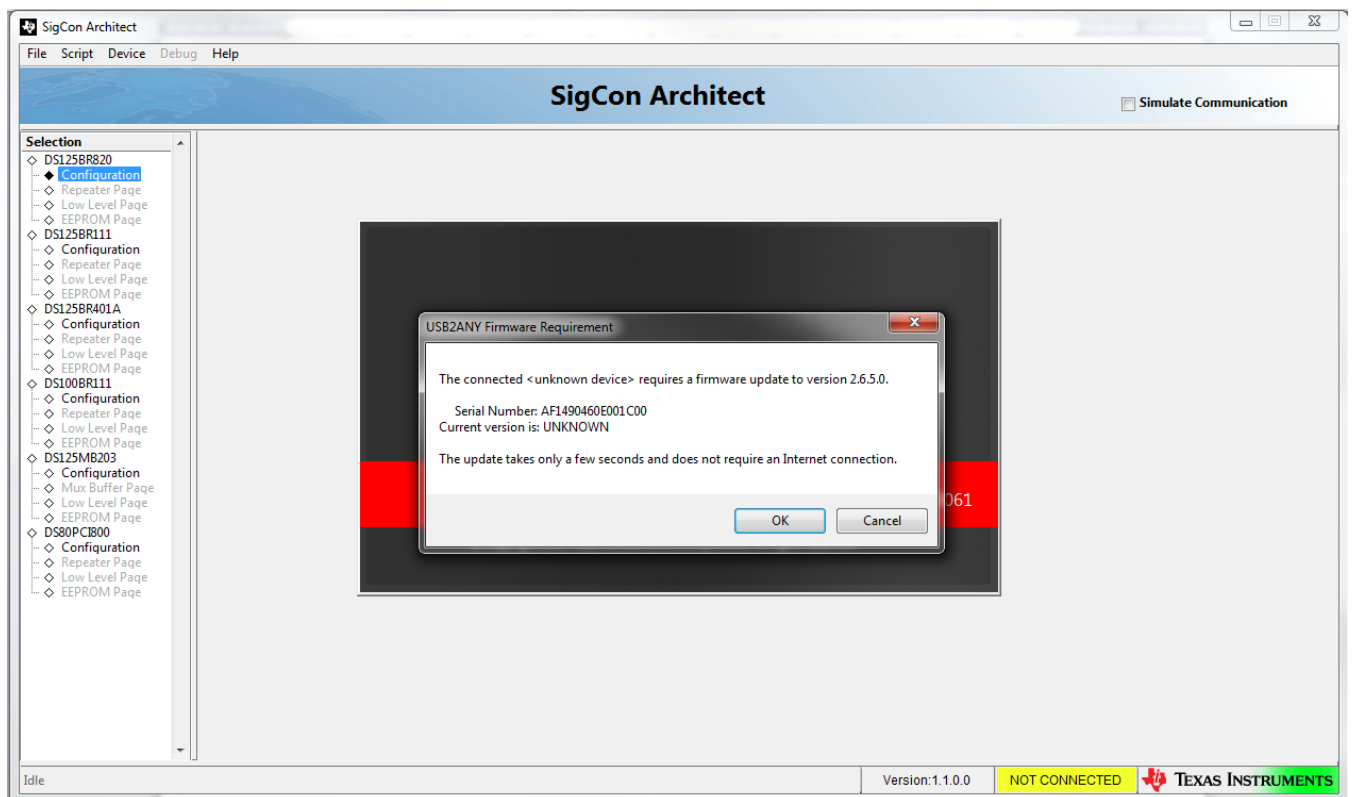
C:\Program Files (x86)\Texas Instruments\SigCon Architect EVM GUI



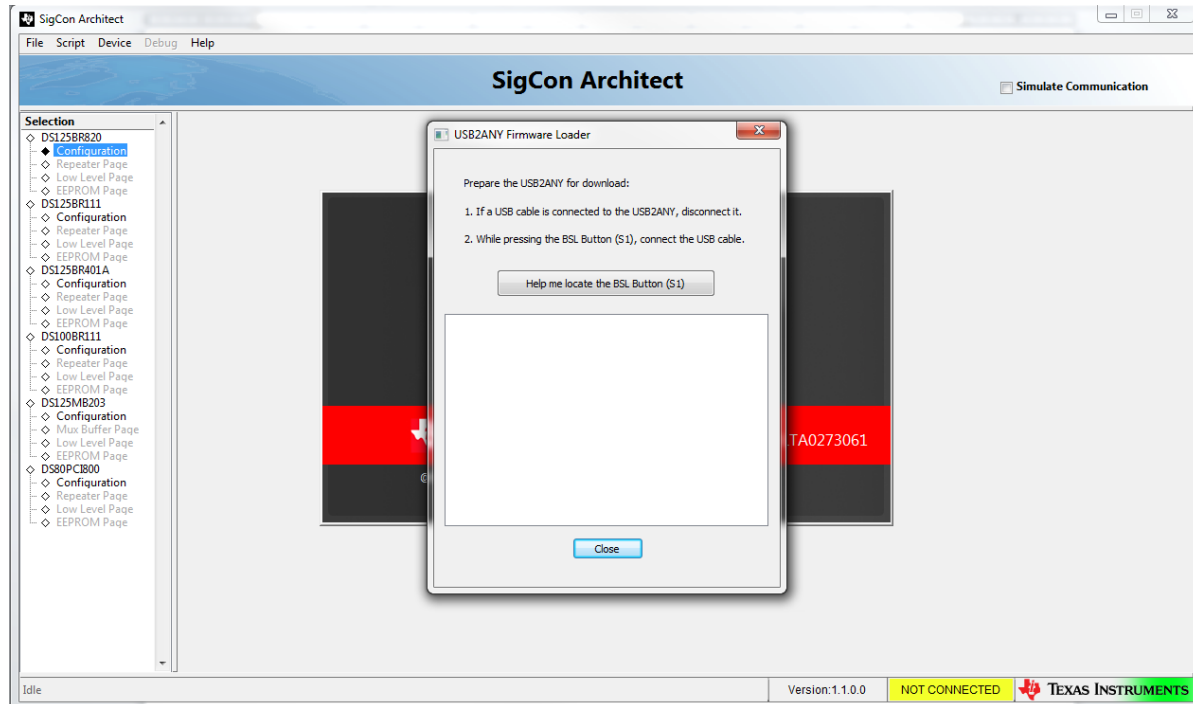
- Copy and paste the runtime files into the GUI directory. Replace and overwrite the USB2ANY.dll file that was previously in the same directory:

Configurations	9/29/2014 11:25 AM	File folder	
Scripts	10/3/2014 12:26 PM	File folder	
Shared Library	9/29/2014 11:25 AM	File folder	
BSL430.dll	1/8/2014 11:49 AM	Application extens...	28 KB
colorschememapping.xml	6/15/2014 9:56 PM	XML Document	1 KB
filelist.xml	7/24/2014 10:09 PM	XML Document	1 KB
GUI Help.htm	7/31/2014 5:27 AM	Chrome HTML Do...	102 KB
Icon.ico	5/26/2014 12:02 AM	Icon	1 KB
Internal Use License.pdf	8/29/2014 2:48 PM	Adobe Acrobat D...	47 KB
Restart GUI.bat	7/31/2014 1:12 AM	Windows Batch File	1 KB
SigCon Architect.aliaes	8/29/2014 3:39 PM	ALIASES File	1 KB
SigCon Architect.exe	8/29/2014 3:39 PM	Application	8,643 KB
SigCon Architect.ini	11/6/2014 9:05 AM	Configuration sett...	1 KB
ti.ico	5/26/2014 12:02 AM	Icon	1 KB
uninstall.exe	9/29/2014 11:25 AM	Application	71 KB
USB2ANY.dll	10/6/2014 1:24 PM	Application extens...	3,394 KB
USB2ANY.lib	10/6/2014 1:24 PM	PSpice Model Libr...	44 KB
USB2ANY_CS.dll	10/6/2014 1:23 PM	Application extens...	34 KB

- After pasting the .dll and .lib files, re-open SigCon Architect. The following window should appear.



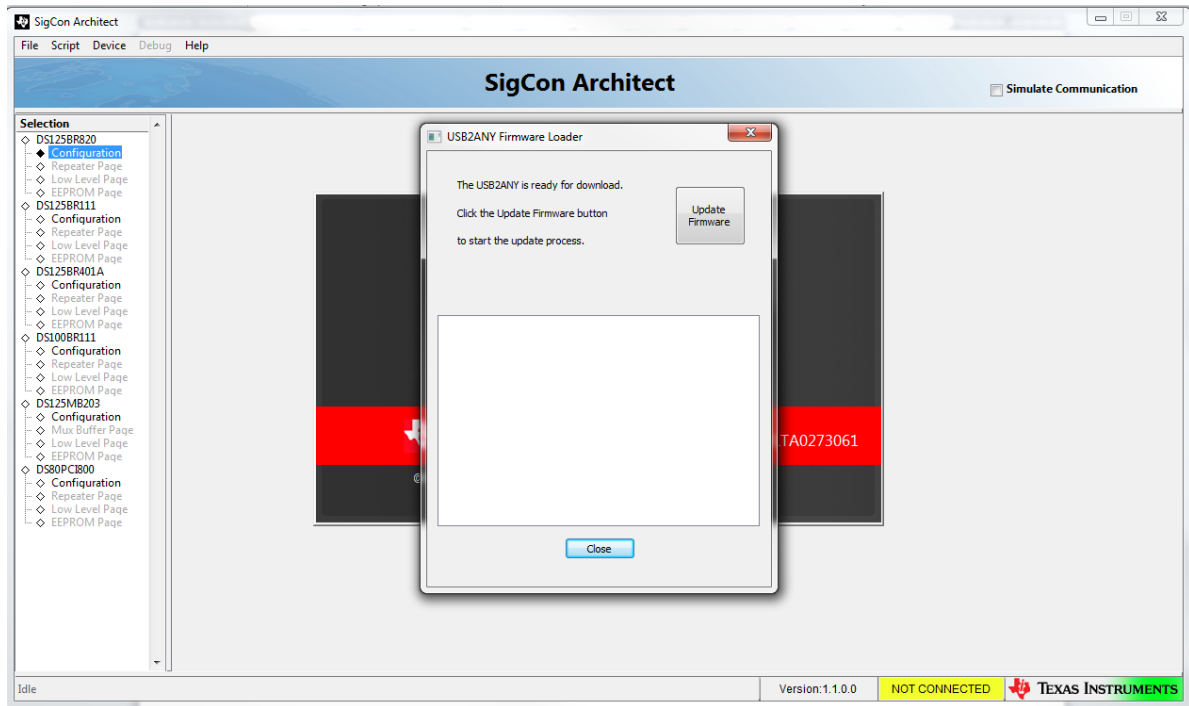
Click OK.



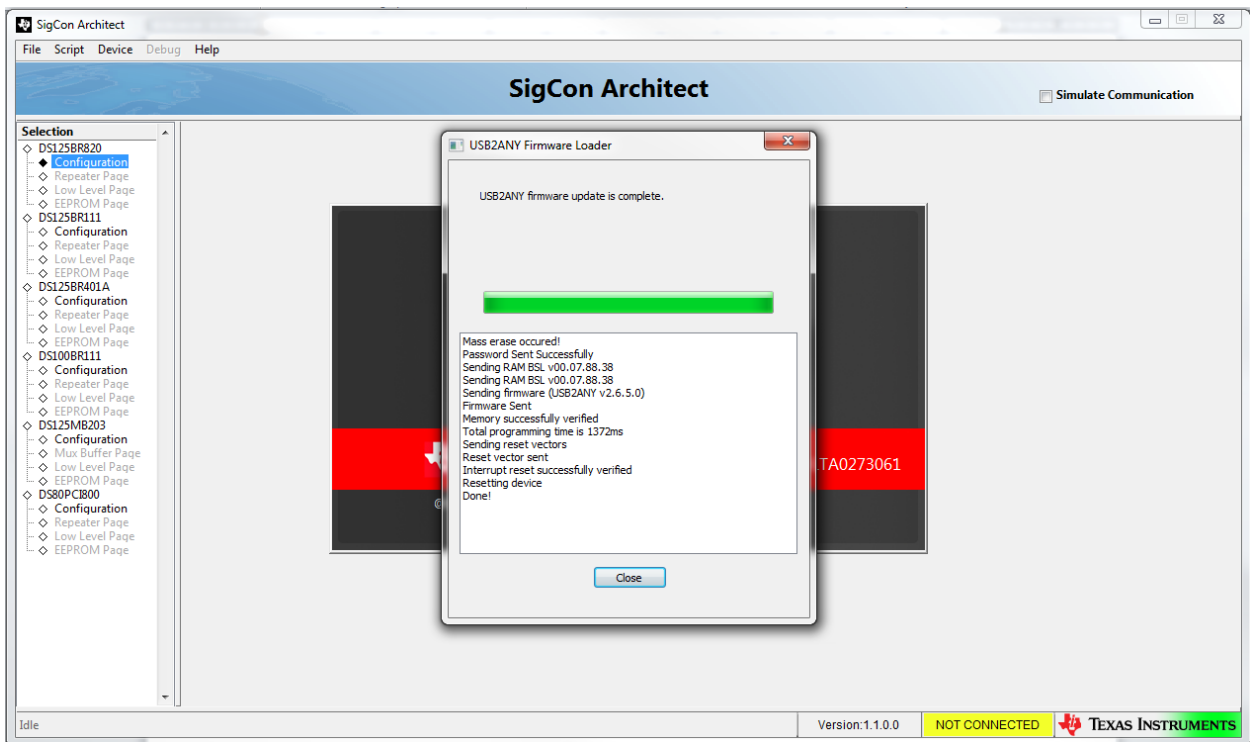
5. You will need a pin to reach the RESET BSL button, as shown below:



- After connecting the USB cable to the computer after holding down the BSL button, the following window will appear:



Click “Update Firmware”.



7. Firmware will load. Once firmware has loaded successfully, you will see “USB2ANY 0” or similar in the USB2ANY box of the Configuration page:

