



MODEL: CC2538-CC2591EM
PCB rev. 1.0



FIDU1

J2

A1

SC1

X1

U3

X2

P6

PD7

PD6

C4

U1

C2

C5

FL1

FL2

EB power



FIDU3

CC2538-CC2591

VDD

USB power

U2

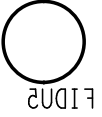
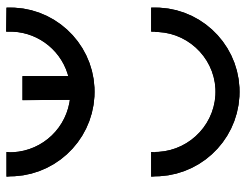
J1



FIDU2

ICC ID : 5AT52385201EM

IC : 421H-52385201EM



b1



b5

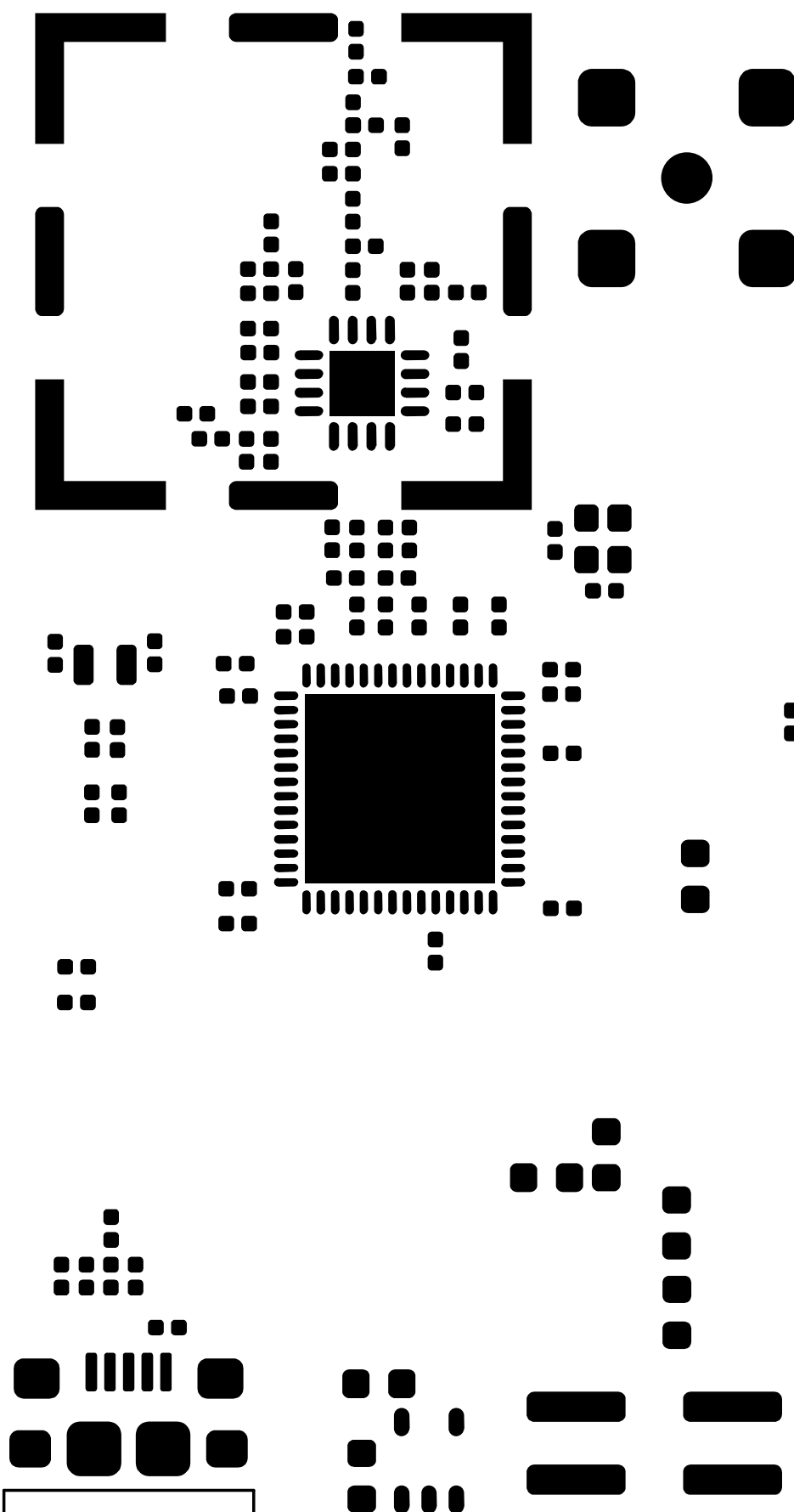


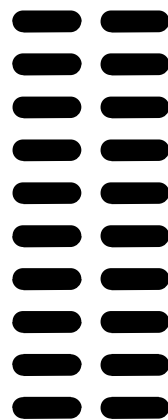
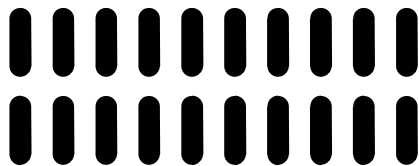
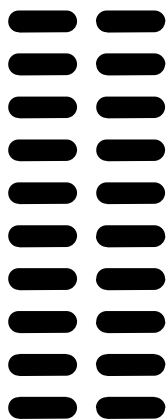
b3



Max 3.0V

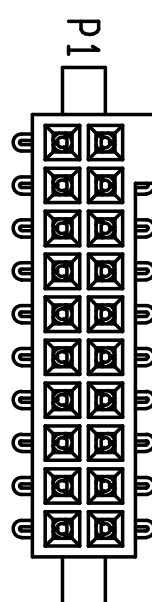
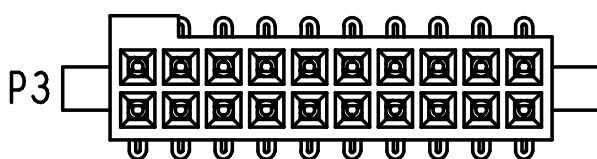
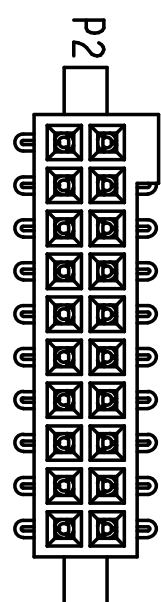








FIDU5



FIDU6



FIDU4

