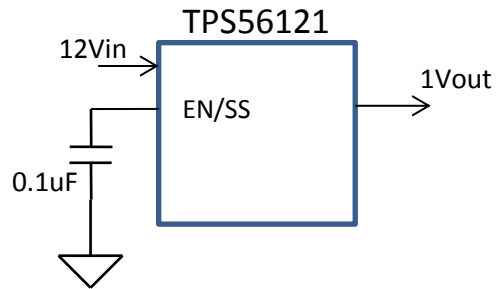
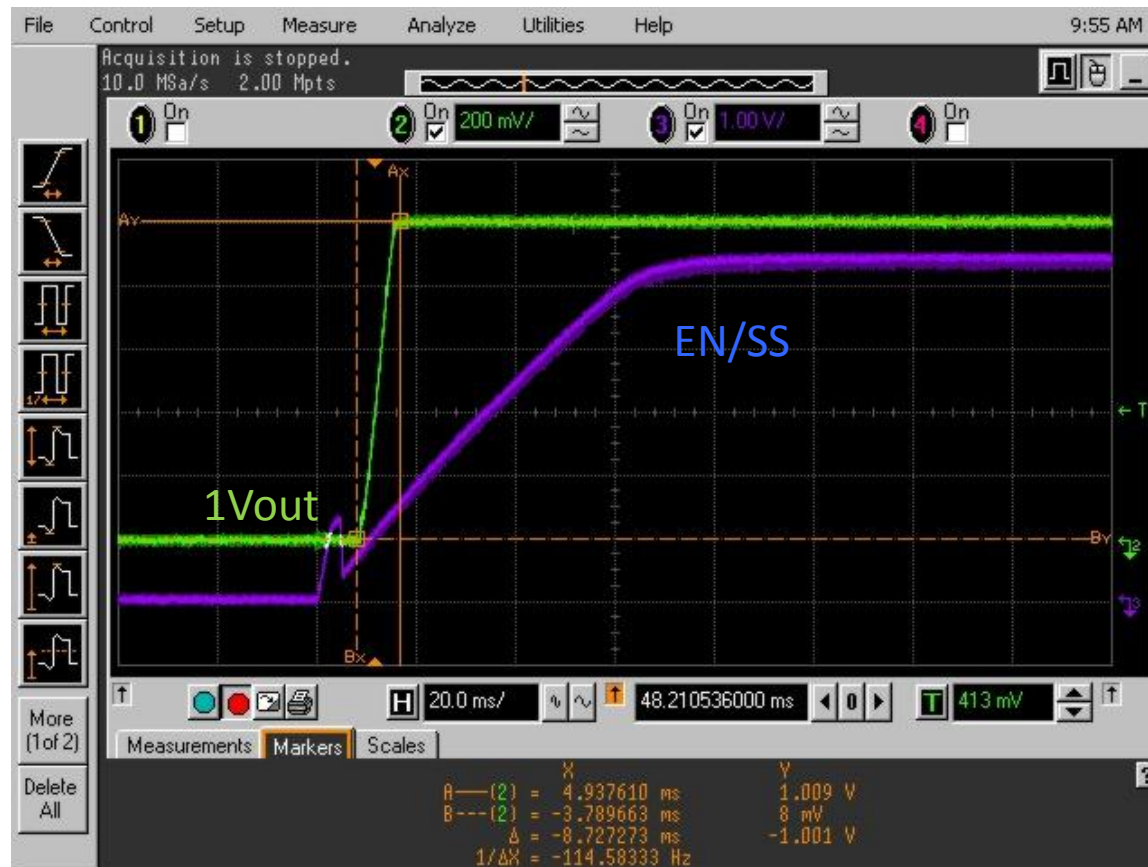


TPS56121 soft start slew rate trouble

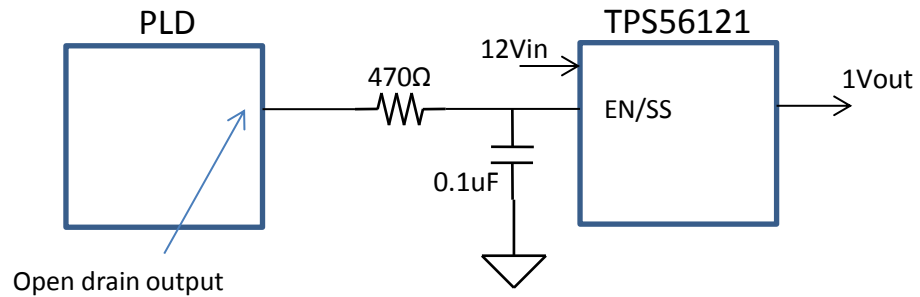
## Circuit condition



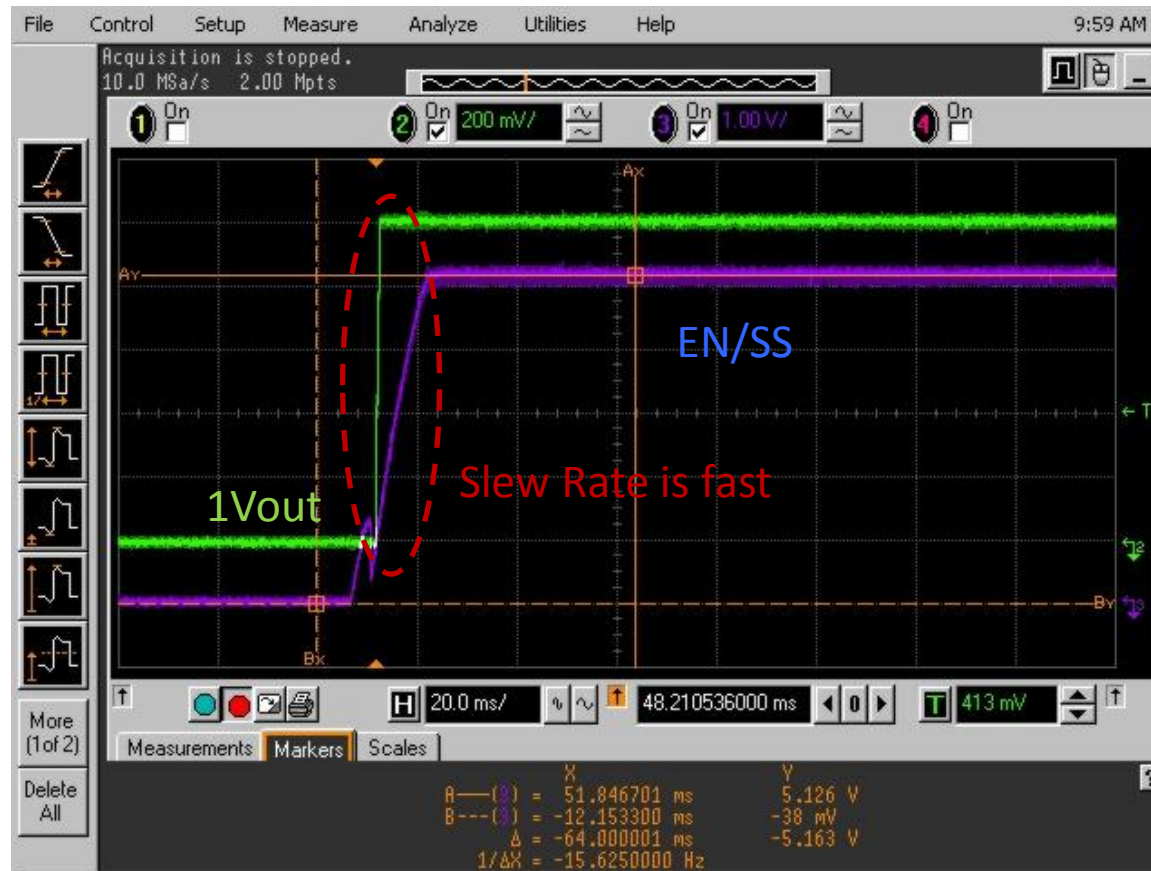
## Normal start-up waveform



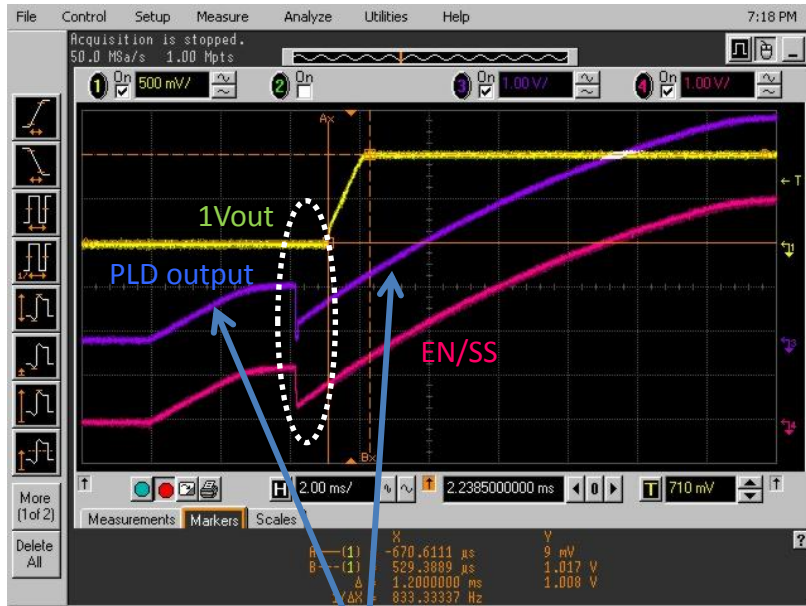
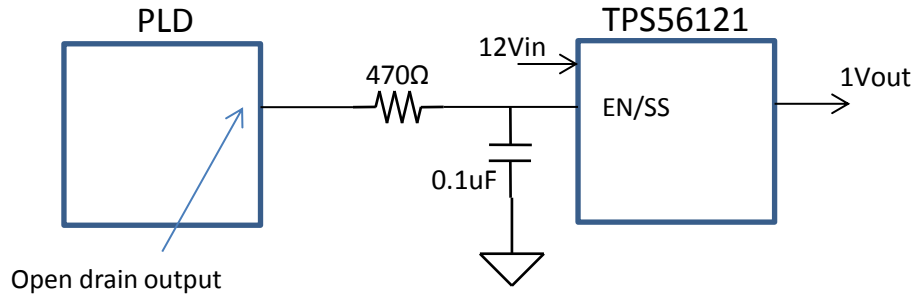
## Circuit condition



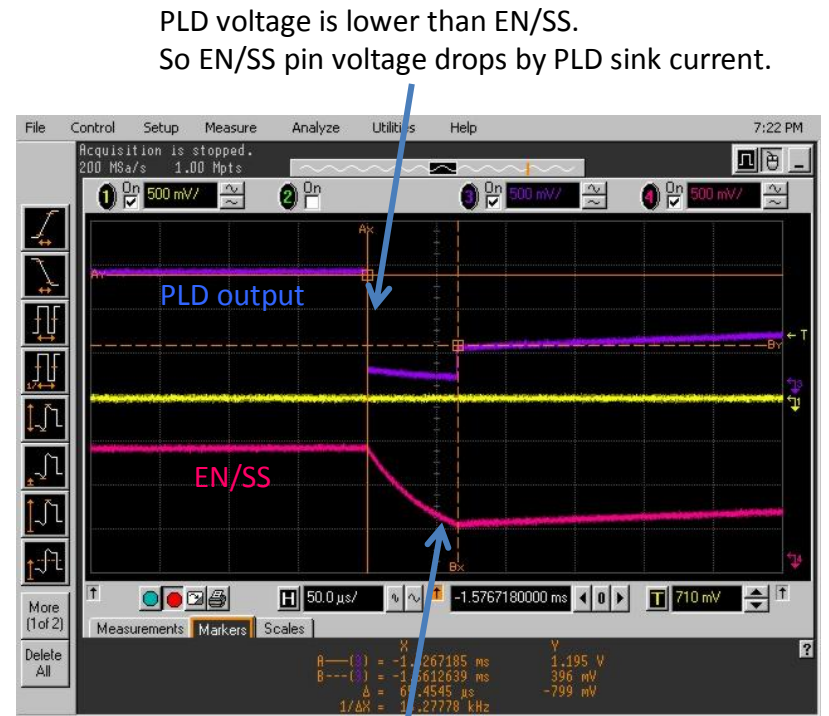
## Observed waveform



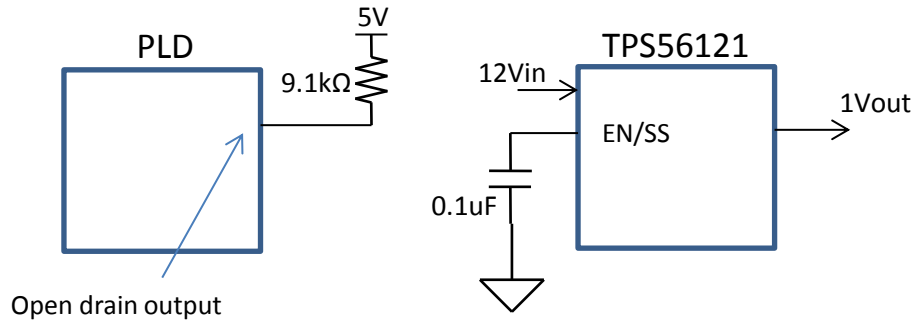
## Circuit condition



At these point, EN/SS source current must be difference.  
However slew rate seems to be the same.



## Circuit condition



PLD output pulls to low level during calibration operation.

# Questions

- What happens in the device when EN/SS pin voltage drops during calibration?
  - For example,
    - Internal current source condition trouble
    - Internal regulator voltage trouble
- Is there possibility of slew rate trouble?
- Please let me know if there are other conceivable phenomenon.