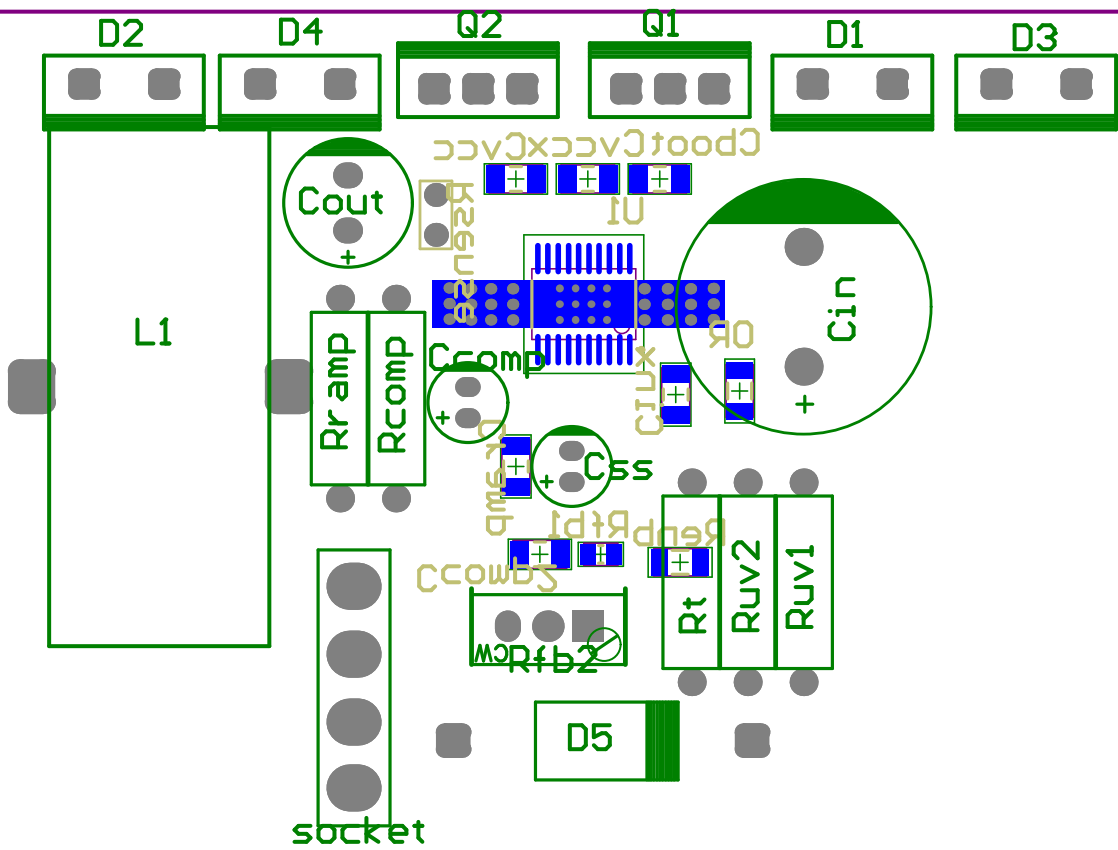


Title		
Size	Number	Revision
A4		
Date:	01/19/2013	Sheet of
File:	D:\ARM\final tank design\tank.SchDoc	Drawn By:



Comment	Description	Designator	Footprint	LibRef	Quantity
100nf	Capacitor (Semiconductor SIM Model)	Cboot	CAP1206(3216X15L)	Cap Semi	1
270pf	Capacitor (Semiconductor SIM Model)	Ccomp	cap01	Cap Semi	1
2.2nf	Capacitor (Semiconductor SIM Model)	Ccomp2, Cramp	CAP1206(3216X15L)	Cap Semi	2
220uf200V	Polar Capacitor	Cin	CAP05	Cap-Polar	1
100nF 50V	Capacitor (Semiconductor SIM Model)	Cinx	CAP1206(3216X15L)	Cap Semi	1
47uf50V	Polar Capacitor	Cout	cap03	Cap-Polar	1
22nf	Capacitor (Semiconductor SIM Model)	Css	cap01	Cap Semi	1
1uf	Capacitor (Semiconductor SIM Model)	Cvcc, Cvccx	CAP1206(3216X15L)	Cap Semi	2
MBR760	1 Amp General Purpose Rectifier	D1, D2, D3, D4	PCBComponent	Diode1N4003	4
1N5822	1 Amp General Purpose Rectifier	D5	PCBComponent	Diode1N4003	1
44.5uH	Inductor	L1	PCBComponent	Inductor	1
IRF2807	N-Channel MOSFET	Q1	PCBComponent	MOSFET-N	1
IRFZ46N	N-Channel MOSFET	Q2	PCBComponent	MOSFET-N	1
0 Ohm	Resistor	R	RES1206(3216X08L)	Res1	1
86.8K	Resistor	Rcomp	Res-(1/1)	Res1	1
1000K	Resistor	Renb	RES1206(3216X08L)	Res1	1
1K	Resistor	Rfb1	RES0805(2012X06L)	Res1	1
21.5K	Variable Resistor	Rfb2	Multi Turr02	Resistor Variable	1
76.8K	Resistor	Rramp	Res-(1/1)	Res1	1
9mOhm	Resistor	Rsense	RES0805(2012X06L)	Res1	1
61.9k	Resistor	Rt	Res-(1/1)	Res1	1
37.4k	Resistor	Ruv1	Res-(1/1)	Res1	1
2.67K	Resistor	Ruv2	Res-(1/1)	Res1	1
Header4H	Header4Pin, Right Angle	socket	PCBComponent	Header4H	1
LM5118MH	Wide Voltage Rang	U1	MXA20A_M	LM5118MH	1