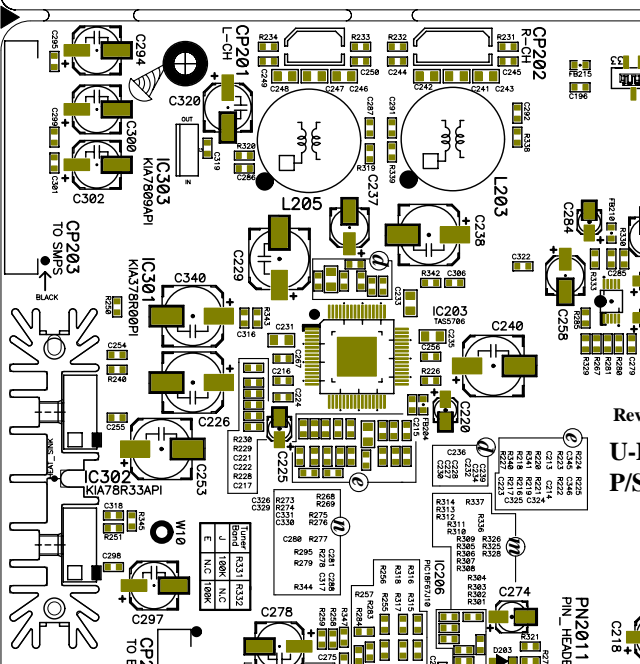


Rev. 1
U-1
P/S



C218

PN2011
PIN HEAD

D283
R27
R321
R320
R319
R318
R317
R316
R315
R314
R313
R312
R311
R310
R309
R308
R306
R305
R304

R224 R225
R345 R346
R223 R222
R221 R220
R219 R218
R217 R216
R227 R223

C236
C235
C234
C233
C232
C231
C230

R268 R269
R275 R276
R295 R294
R278 R277
R279 R278
R344 R343
R258 R259
R257 R256
R255 R254
R253 R252
R251 R250
R249 R248
R247 R246
R245 R244
R243 R242
R241 R240
R239 R238
R237 R236
R235 R234
R233 R232
R231 R230
R229 R228
R227 R226
R225 R224
R223 R222
R221 R220
R219 R218
R217 R216
R215 R214
R213 R212
R211 R210
R209 R208
R206 R205
R204 R203
R202 R201
R200 R199
R198 R197
R196 R195
R194 R193
R192 R191
R190 R189
R188 R187
R186 R185
R184 R183
R182 R181
R180 R179
R178 R177
R176 R175
R174 R173
R172 R171
R170 R169
R168 R167
R166 R165
R164 R163
R162 R161
R160 R159
R158 R157
R156 R155
R154 R153
R152 R151
R150 R149
R148 R147
R146 R145
R144 R143
R142 R141
R140 R139
R138 R137
R136 R135
R134 R133
R132 R131
R130 R129
R128 R127
R126 R125
R124 R123
R122 R121
R120 R119
R118 R117
R116 R115
R114 R113
R112 R111
R110 R109
R108 R107
R106 R105
R104 R103
R102 R101
R100 R99
R98 R97
R96 R95
R94 R93
R92 R91
R90 R89
R88 R87
R86 R85
R84 R83
R82 R81
R80 R79
R78 R77
R76 R75
R74 R73
R72 R71
R70 R69
R68 R67
R66 R65
R64 R63
R62 R61
R60 R59
R58 R57
R56 R55
R54 R53
R52 R51
R50 R49
R48 R47
R46 R45
R44 R43
R42 R41
R40 R39
R38 R37
R36 R35
R34 R33
R32 R31
R30 R29
R28 R27
R26 R25
R24 R23
R22 R21
R20 R19
R18 R17
R16 R15
R14 R13
R12 R11
R10 R9
R8 R7
R6 R5
R4 R3
R2 R1

Tuner		
R331	R332	R333
J	100K	N/C
E	N/C	100K

CP205
TO E

W10

C297

IC302
KIA78R33API

C253

C226

IC301
KIA378R00PI

C340

IC303
KIA7809API

C302

C294

IC206
PIC16F07J10

C274

C273

C220

C240

IC203
TAS5706

C238

L203

CP202
R-CH

CP201
L-CH

C278

C225

C229

C231

C222

C227

C237

C246

C247

C248

C275

C276

C277

C278

C279

C280

C281

C282

C283

C284

C258

C284

C285

C286

C218

C219

C220

C221

C222

C223

C224

C225

C226

C227

C218

C219

C220

C221

C222

C223

C224

C225

C226

C227

IC305

IC301

12

Cb502



IC303



14	W0HDV
12	KEA6
13	KEA2
11	KEA*
10	KEA3
9	KEA5
8	KEA1
7	BLT_OH/VEE
6	BLT_*2A
5	W0HD
4	W0HD
3	W0HD
2	BLT_OH/LOW
1	W0HD
	Cb510

12	W0HD
14	W0HD - CLR*_OHL
13	W0HD
15	W0HD306(+30*3A)
11	W0HD306(+30*3A)
10	W0*_OHD
9	W0*_OHD
8	ACC(+8N)
7	ACC(+8N)
6	AD*_OHD
5	-32A(W0K)
4	AD*_
3	+4*_2N(ADH+)
2	W0ACC23(+2*2N)
1	W0-2892
	Cb503

Cb501



Γ502

Cb505



Γ503

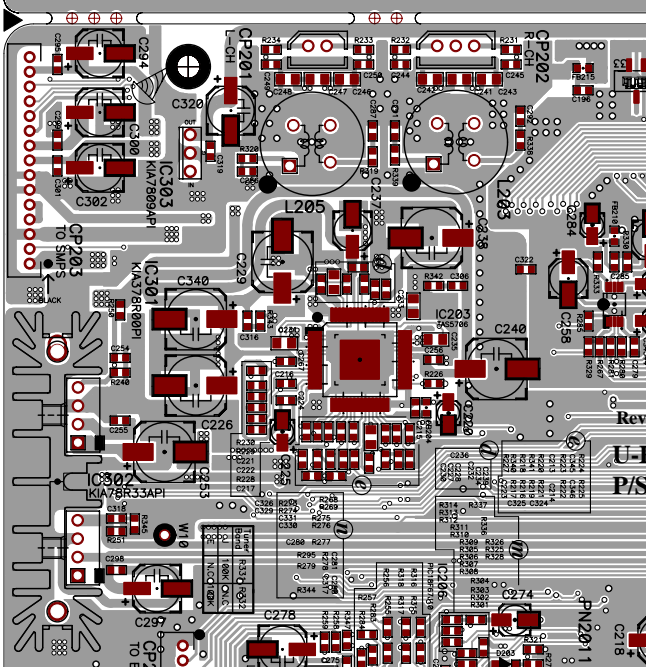


Rev 3.0

20
M | 2014.09.11

13	ADDR	22	W0HD
16	ADDR	23	Hb*_Γ*_IH
12	ACC2	21	W0HD
14	ACC23	20	Hb*_Γ*_IH
17	-ACC23		





IC305

IC301

CB303

A

D

14	WORD	00
12	KEYA	0
13	KEYB	0
11	KEY*	0
10	KEY*	0
9	KEYA	0
8	KEYB	0
7	BI - ONVSE	0
6	BI - FEA	0
5	WORD	00
4	WORD	00
3	PAC	0
1	WORD	00

CB310

D

12	WORD	00
14	EMF CLR*	0/1
13	WORD	00
15	ADDRESS (+5V AN)	00
11	ADDRESS (+5V AN)	00
10	WORD	00
9	WORD	00
8	ACC(+RN)	0
7	ACC(+RN)	0
6	AD_CHD	0
5	-3.3V(MK)	0
4	N/D	
3	+3.3V(MD+)	0
2	MACCT(003*)	00
1	-3.3V	0

CB303

IC302

LS02

CB301

20
M | 2014.09.11

Rev 3.0

13	ADDRESS	00
18	ADDRESS	00
12	ACC2	0
14	ACC22	0
17	ACC232	0
16	ACC23	0
21	WORD	00
20	No. I/O	0
22	KEY*	0

A

LS03

CB305