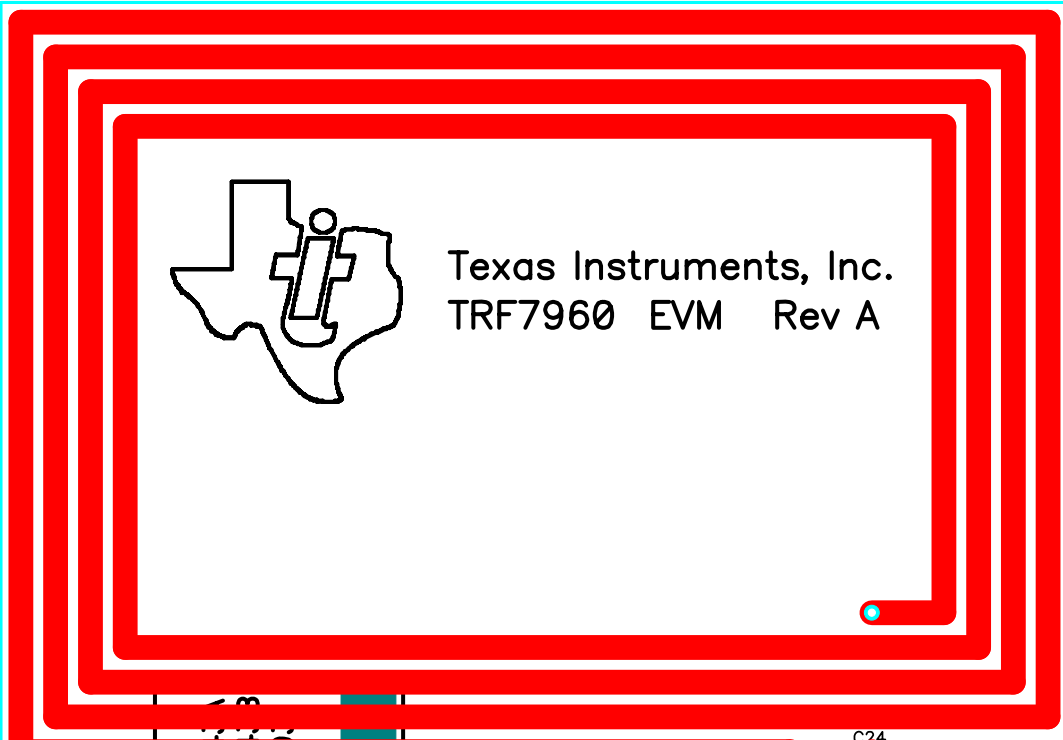
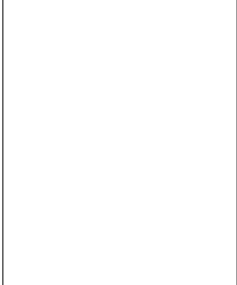
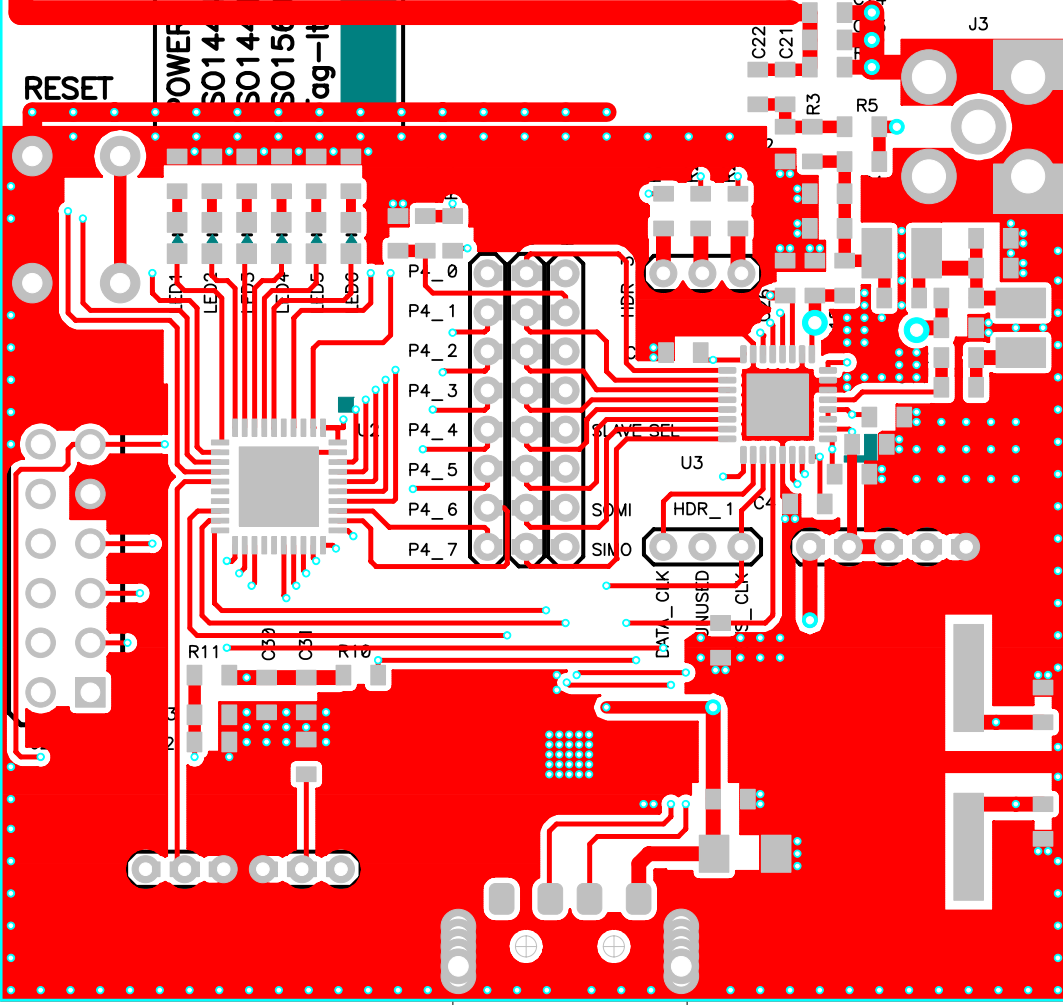


2.150

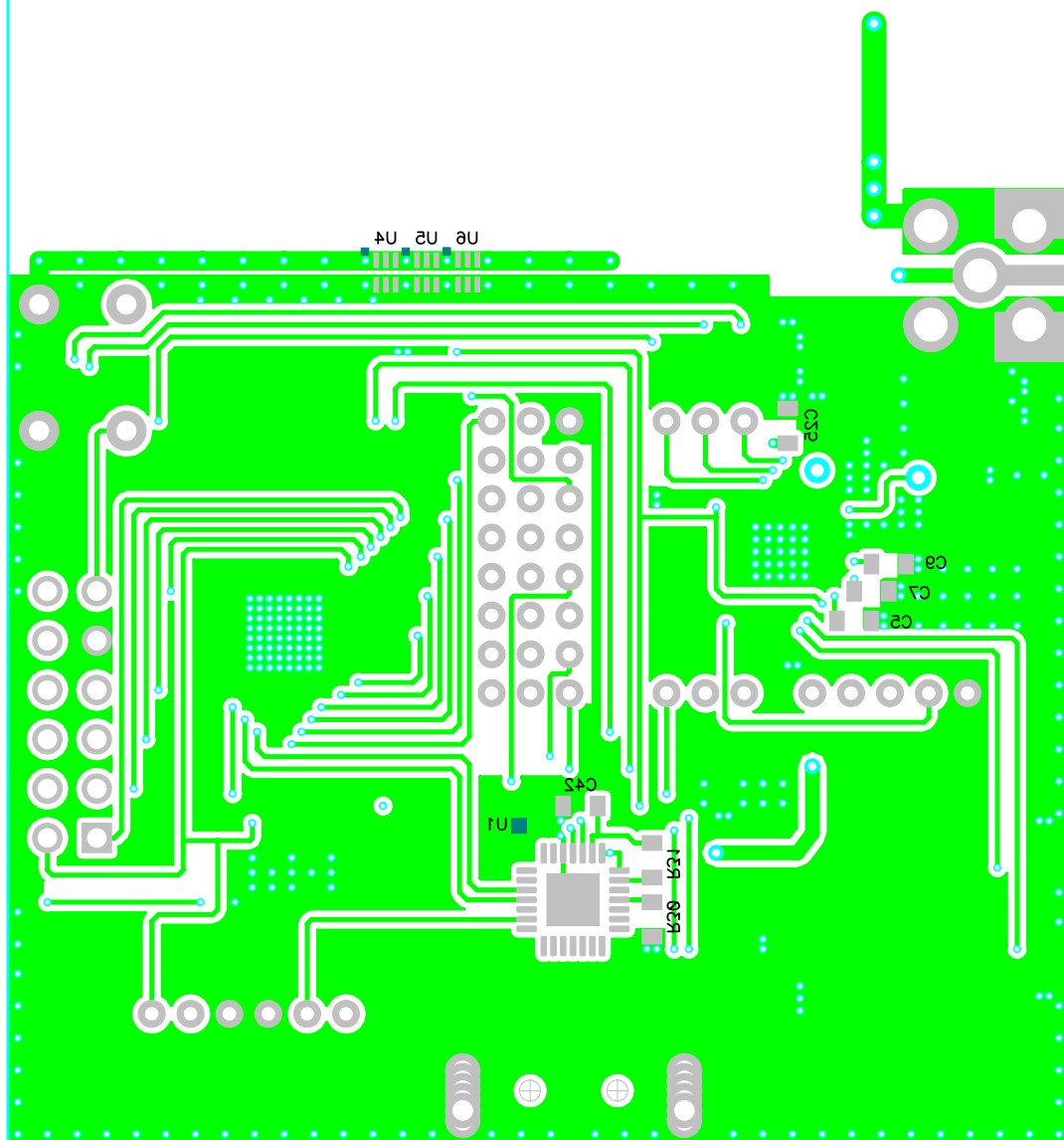


3.500



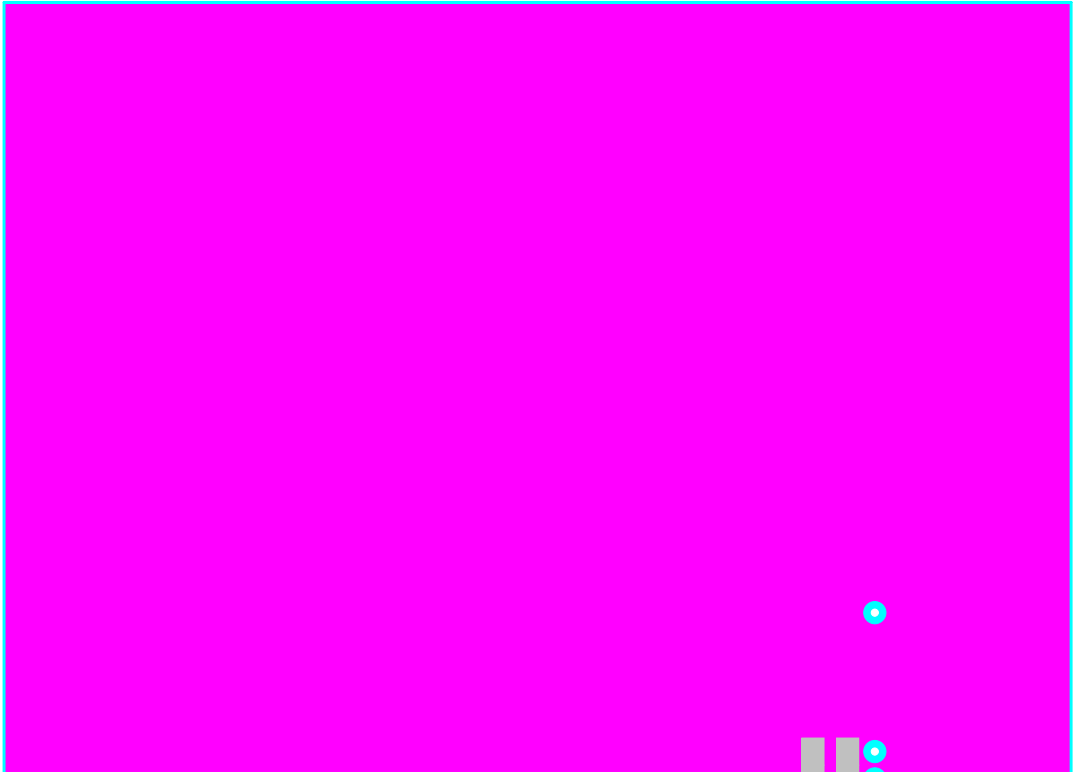
2.150

For Development Use Only
This device has not been certified
per FCC requirements. This device
is not and may not be offered for
sale or lease until authorization or
certification is obtained.

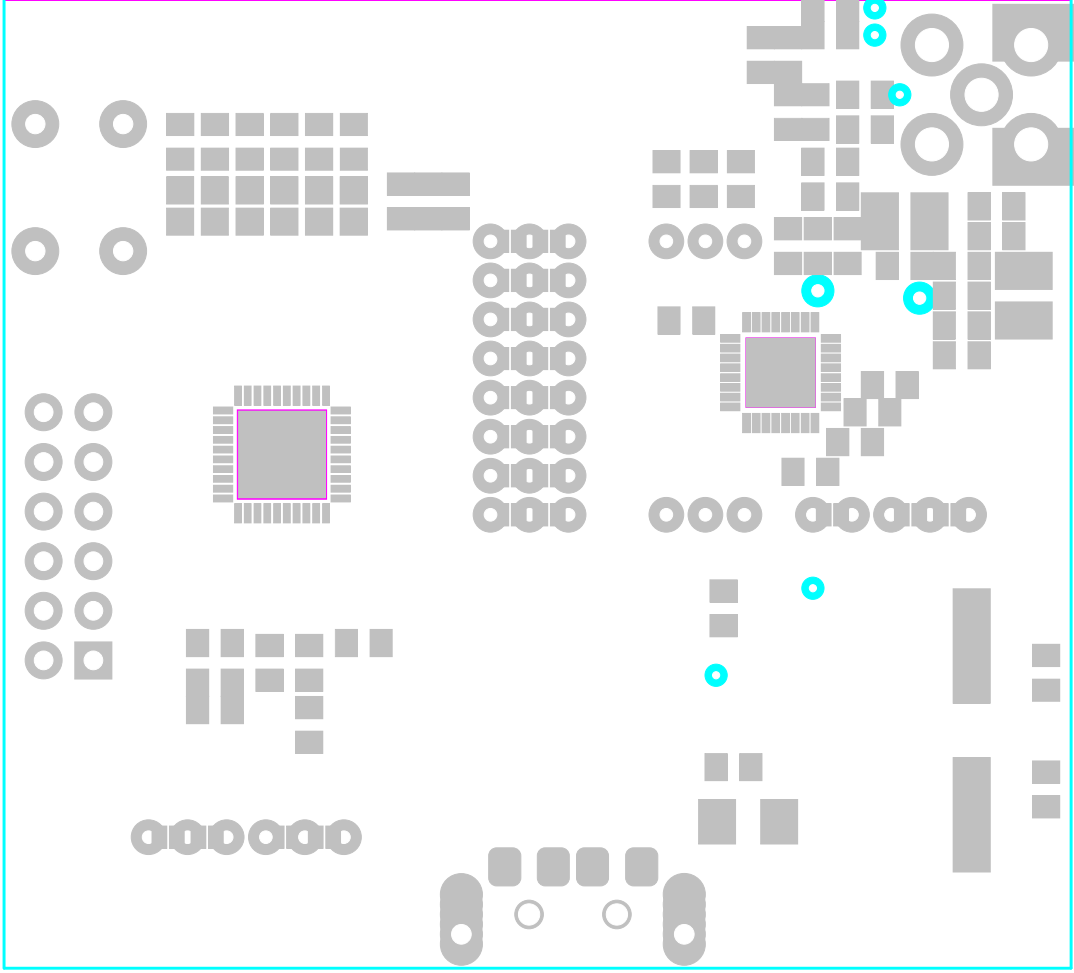


3.500

2.150



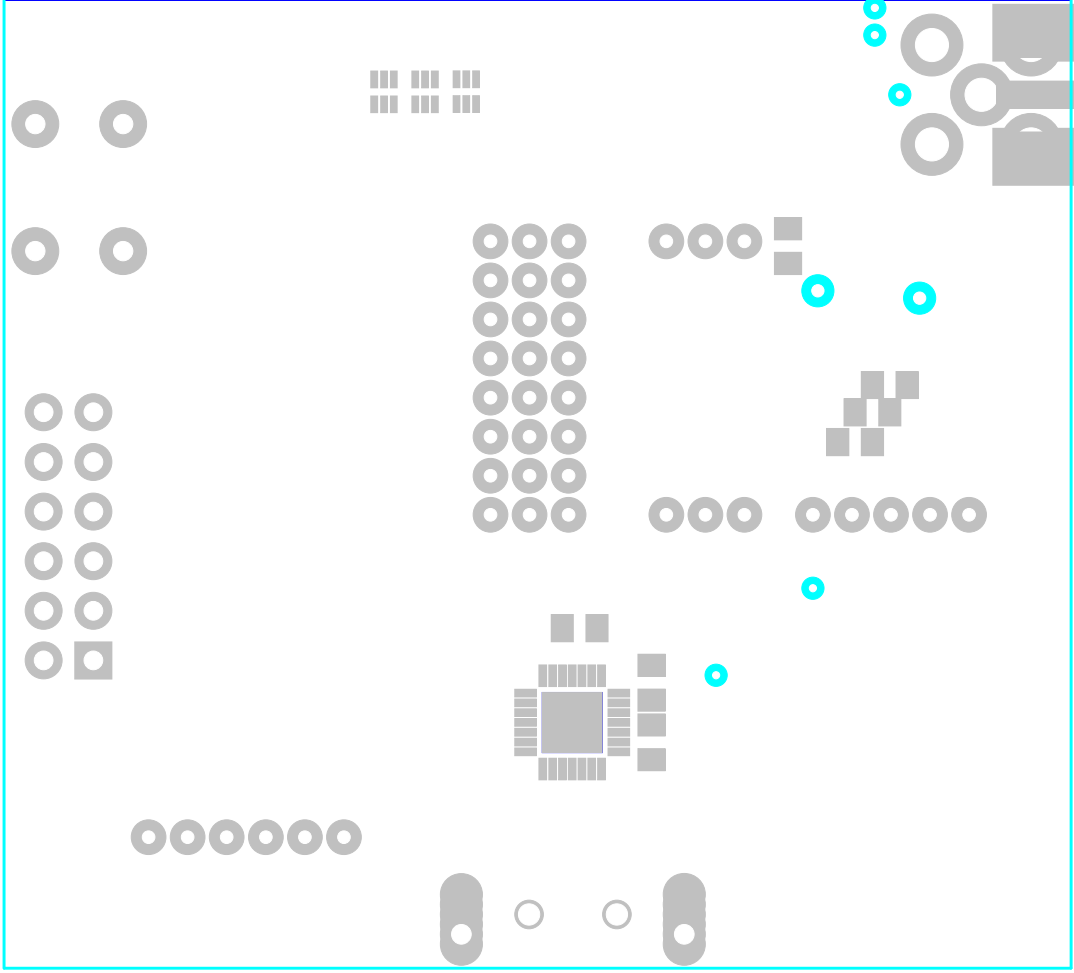
3.500



2.150



3.500



MATERIALS

1. ALL MATERIALS, INCLUDING BUT NOT LIMITED TO BASE LAMINATE, BONDING MATERIALS AND SOLDERMASK COATINGS FORMING THE FINISHED PRINTED CIRCUIT BOARD SHALL MEET UL-796 REQUIREMENTS AND HAVE A FLAMMABILITY OF UL94V-0.
2. BASE LAMINATE: PLASTIC SHEET, LAMINATED METAL CLAD, TWO SIDES, BASE MATERIAL NEMA TYPE FR-4 GLASS EPOXY RESIN, COPPER-CLAD IN ACCORDANCE WITH LAYER STACK-UP
3. PLATING: TIN-LEAD
4. SOLDERMASK: SMOBC, LPI, IPC-SM-840, GREEN
5. SILKSCREEN: LPI WHITE
6. VENDOR'S IDENTIFICATION CODE: BOTTOM LAYER SILKSCREEN. IF ETCH USED INSTEAD, SHALL NOT COMPROMISE A GROUND PLANE.



FABRICATION

1. BOARDS ARE TO BE FABRICATED TO IPC-A-600, CLASS 2
2. BOARD DIMENSIONS ARE IN INCHES EXCEPT WHERE NOTED
3. ALL INTERNAL LAYERS ARE TO BE REGISTERED TO WITHIN 0.003 OF THE TRUE POSITION. THE MINIMUM DISTANCE FROM THE EDGE OF THE PLATED HOLE WALL IS TO BE NO CLOSER THAN 0.008 TO THE INTERNAL SHIELD
4. FINISHED LINE WIDTHS SHALL BE MAINTAINED TO WITHIN +/- 0.001 OF THE ARTWORK
5. DRILL SIZE HOLE DIAMETERS SHOWN (SEE TABLE) ARE FINISHED SIZES AFTER PLATING
6. HOLES REQUIRING PLATING, TO HAVE 0.001 (1 mil) MINIMUM THICKNESS COPPER
7. NET LIST TEST IS NOT REQUIRED

LAYER STACK-UP

1. 2 LAYER PCB
2. 2 OZ CU, BOTH SIDES
3. FINISHED BOARD THICKNESS, MEASURED COPPER TO COPPER, OF: 0.062 +0.003/-0.004

Drill Table			
Hole Dia (Inch)	Symbol	Quantity	Plated
0.008	+	391	Yes
0.015	X	13	Yes
0.025	Y	2	Yes
0.026	+	35	Yes
0.026	X	6	Yes
0.038	□	12	Yes
0.039	◇	4	Yes
0.040	▣	12	Yes
0.043	◇	2	Yes
0.067	⊠	5	Yes

2.150



Texas Instruments, Inc. TRF7960 EVM Rev A

RESET

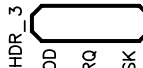


S1

- LED1
- LED2
- LED3
- LED4
- LED5
- LED6

- R12
- R13
- R14
- HDR_4
- HDR_5
- HDR_6
- P4_0
- P4_1
- P4_2
- P4_3
- P4_4
- P4_5
- P4_6
- P4_7

U2



HDR_3

MOD

IRQ

ASK

C26

C3

SLAVE SEL

U3

SOMI

HDR_1

SIMO

DATA_CLK

UNUSED

SYS_CLK

R24

R27

R26

R25

R2

C20

C19

R4

L2

C18

C17

C12

C11

C8

C6

HDR_2

C4

+5V

VIN

VIN

EN2

GND

C22

C21

R6

R5

R3

C24

C23

J3

C16

C15

L1

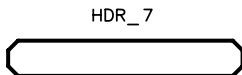
C10

C2

C1

Y1

3.500



HDR_7

SPI

I/O SEL

PARALLEL

GND

CTS

UNUSED

+

J1

2.150

For Development Use Only
This device has not been certified
per FCC requirements. This device
is not, and may not be, offered for
sale or lease until authorization or
certification is obtained.

ue us u4

csa

ca
ca

ca

u1

139 029

3.500