

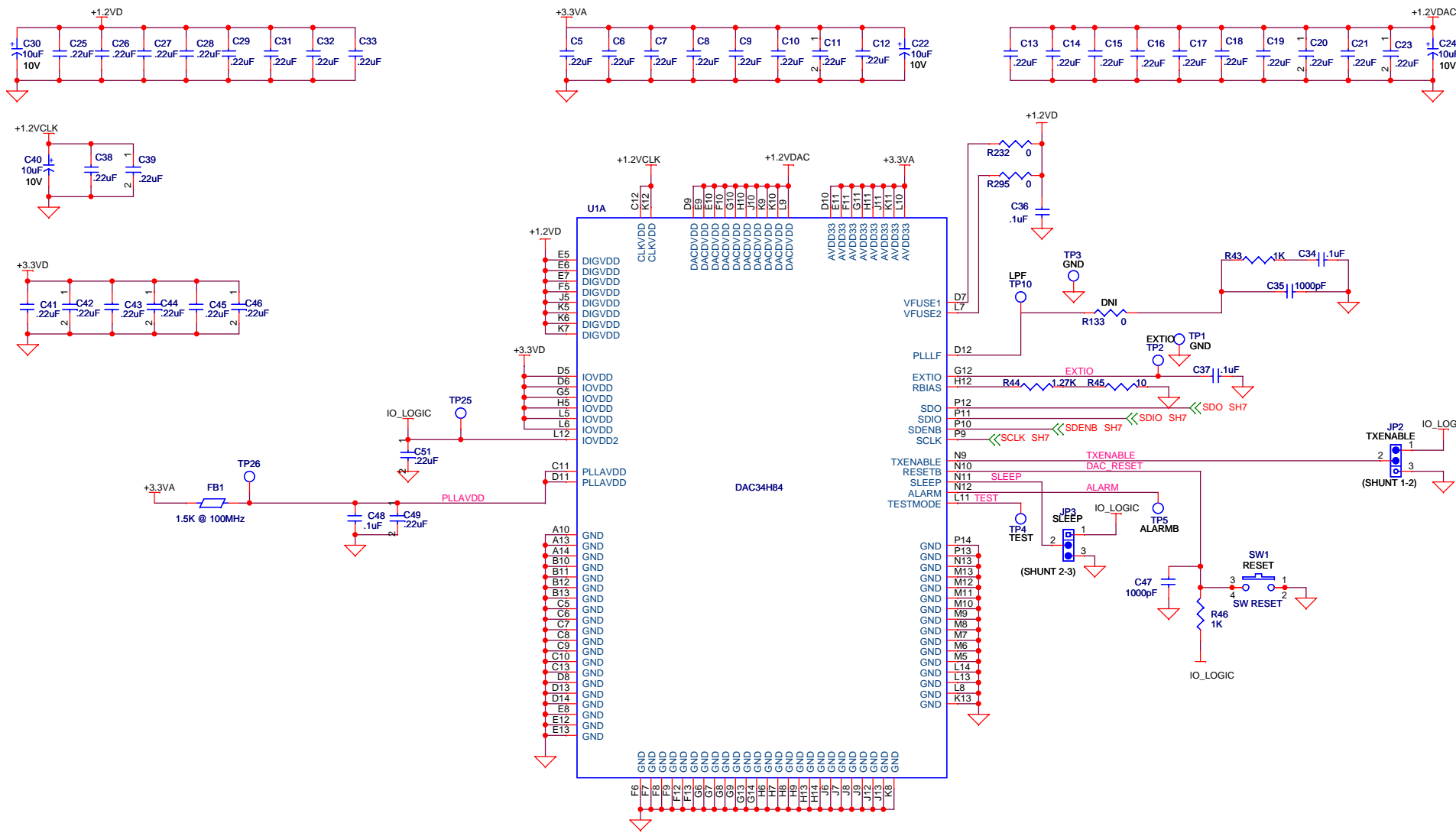
NOTES:
 1) DNI = DO NOT INSTALL

TEXAS INSTRUMENTS

Title: **DAC34H8X EVM**

Size: **B** Document Number: **DAC** Rev: **A**

Drawn: **L. Nguyen** Engineer: **K. Hsia** Date: **Tuesday, November 23, 2010** Sheet: **1** of **8**

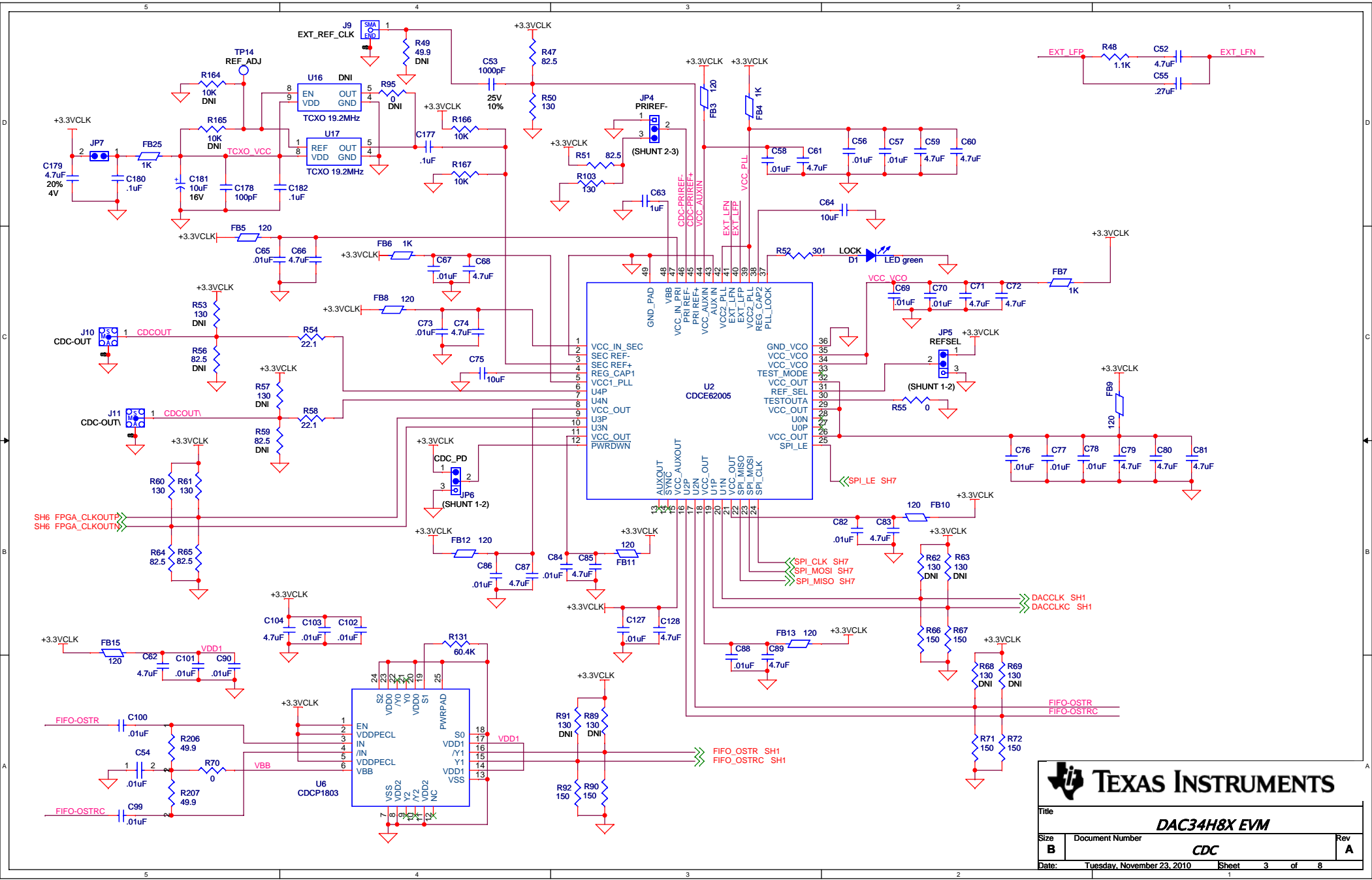


TEXAS INSTRUMENTS

Title: **DAC34H8X EVM**

Size: **B** | Document Number: **DAC** | Rev: **A**

Date: **Tuesday, November 30, 2010** | Sheet: **2** of **8**

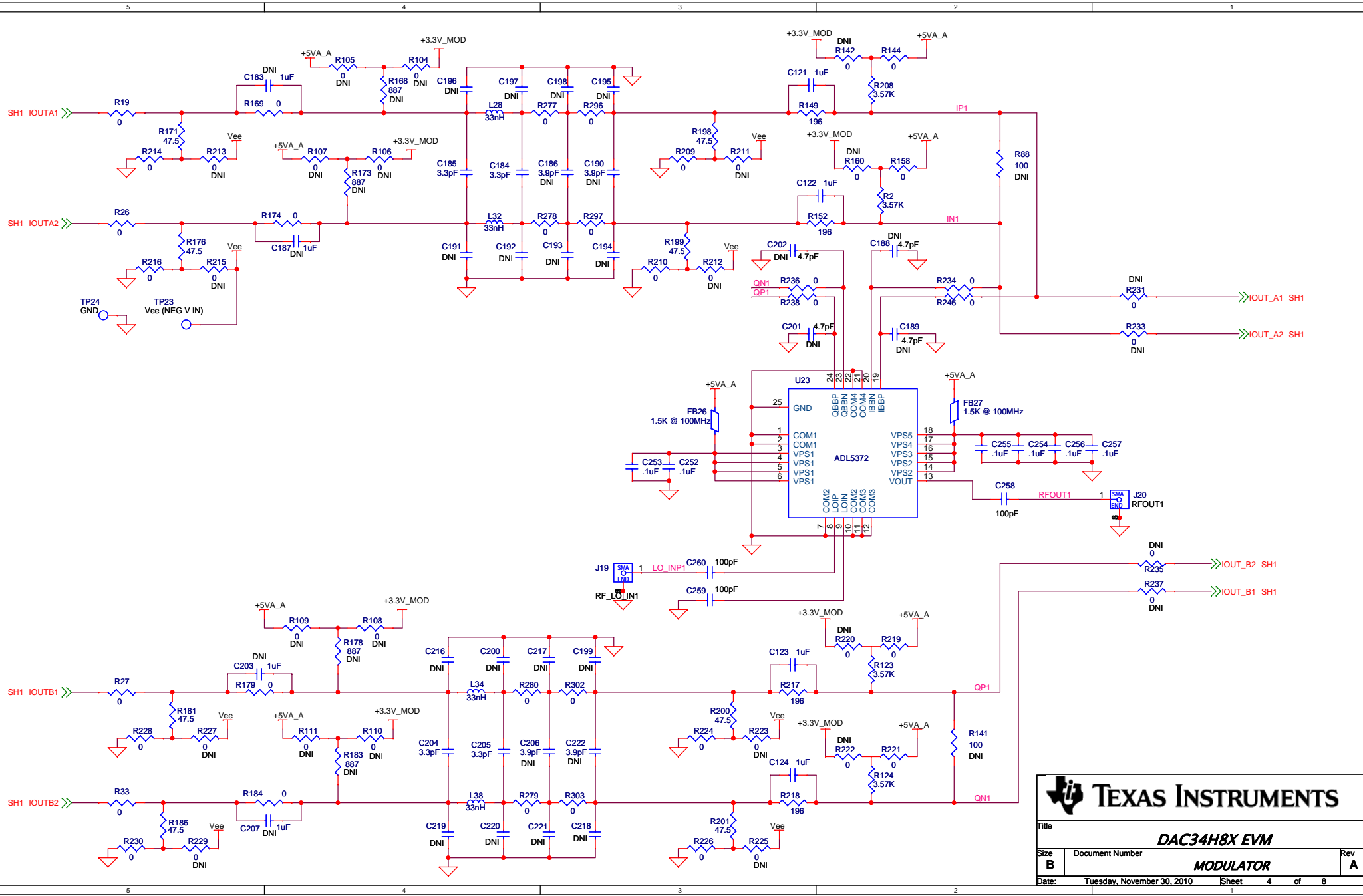


TEXAS INSTRUMENTS

Title: **DAC34H8X EVM**

Size: **B** Document Number: **CDC** Rev: **A**

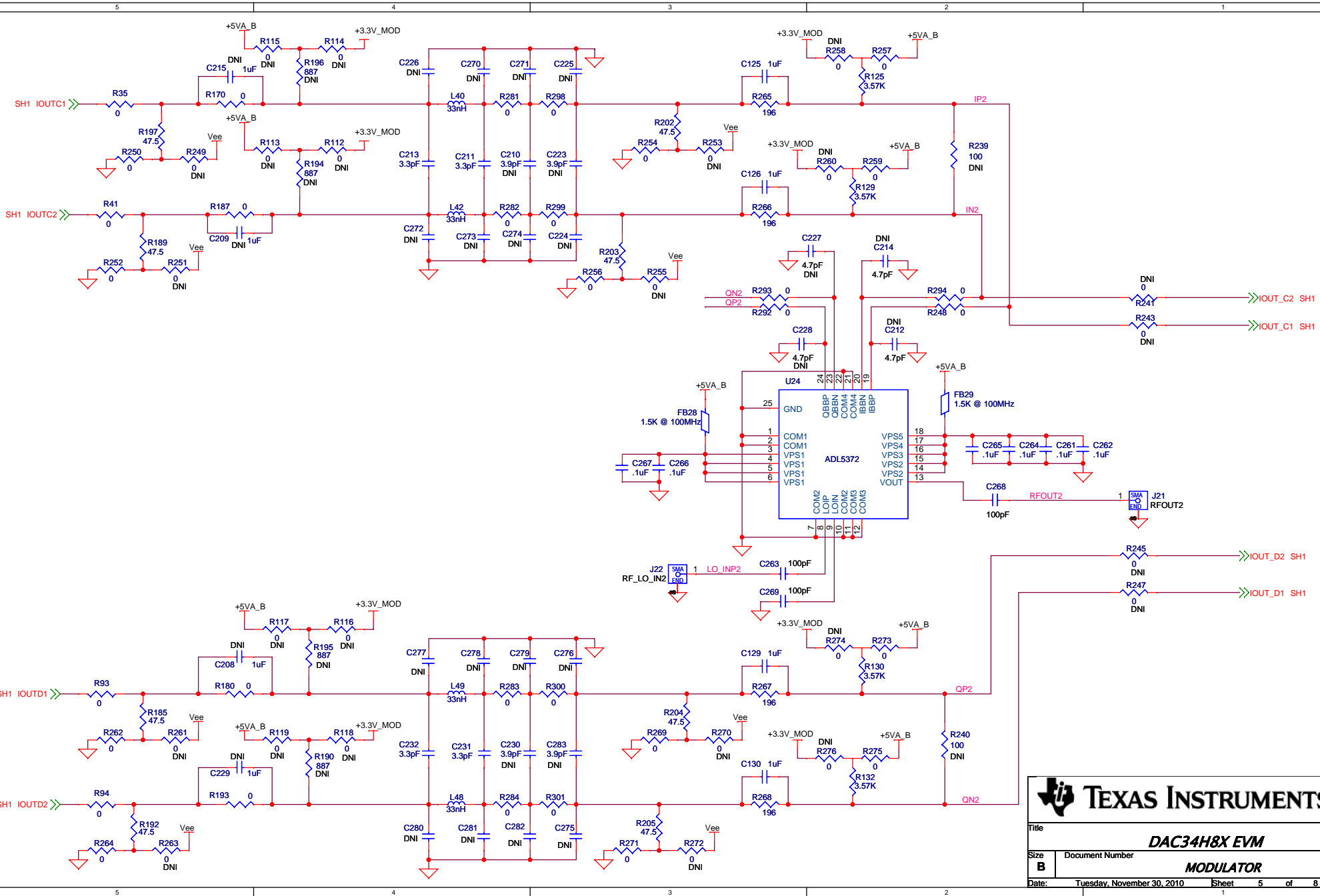
Date: **Tuesday, November 23, 2010** Sheet: **3** of **8**



TEXAS INSTRUMENTS

DAC34H8X EVB

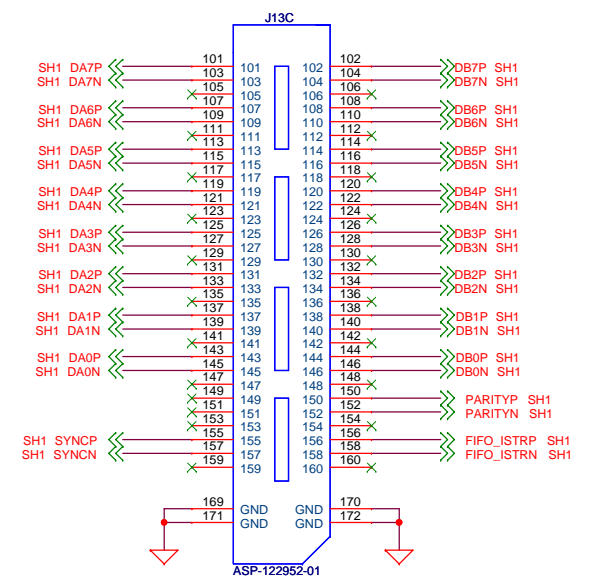
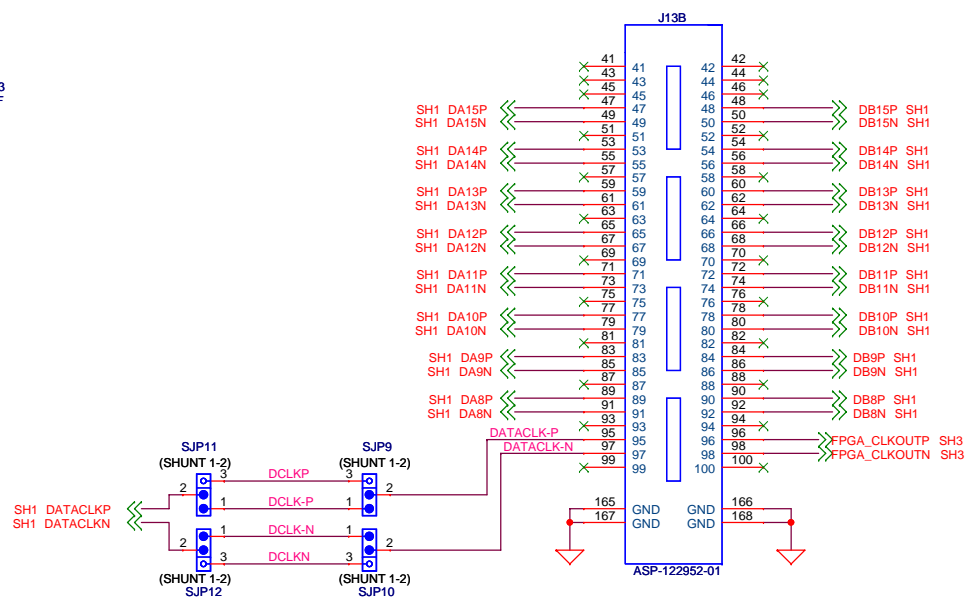
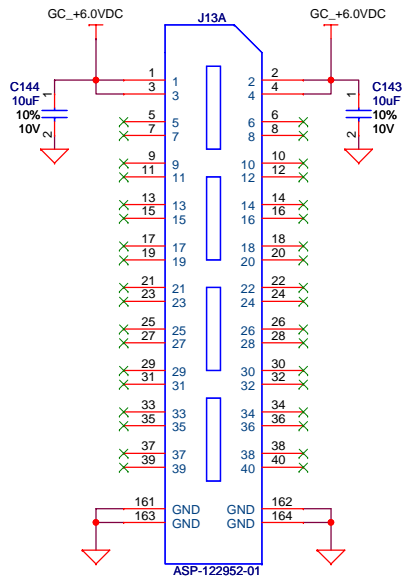
Size	Document Number	Rev
B	MODULATOR	A
Date:	Tuesday, November 30, 2010	Sheet 4 of 8



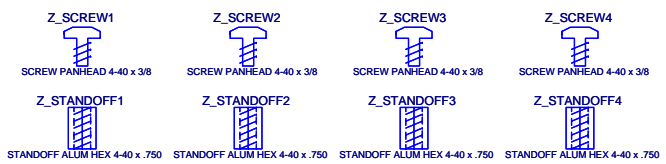
TEXAS INSTRUMENTS

DAC34H8X EVM

Title	DAC34H8X EVM		Rev	A
Size	Document Number	MODULATOR		
Date:	Tuesday, November 30, 2010	Sheet	5	of 8



***DCLK-P/N are topside traces

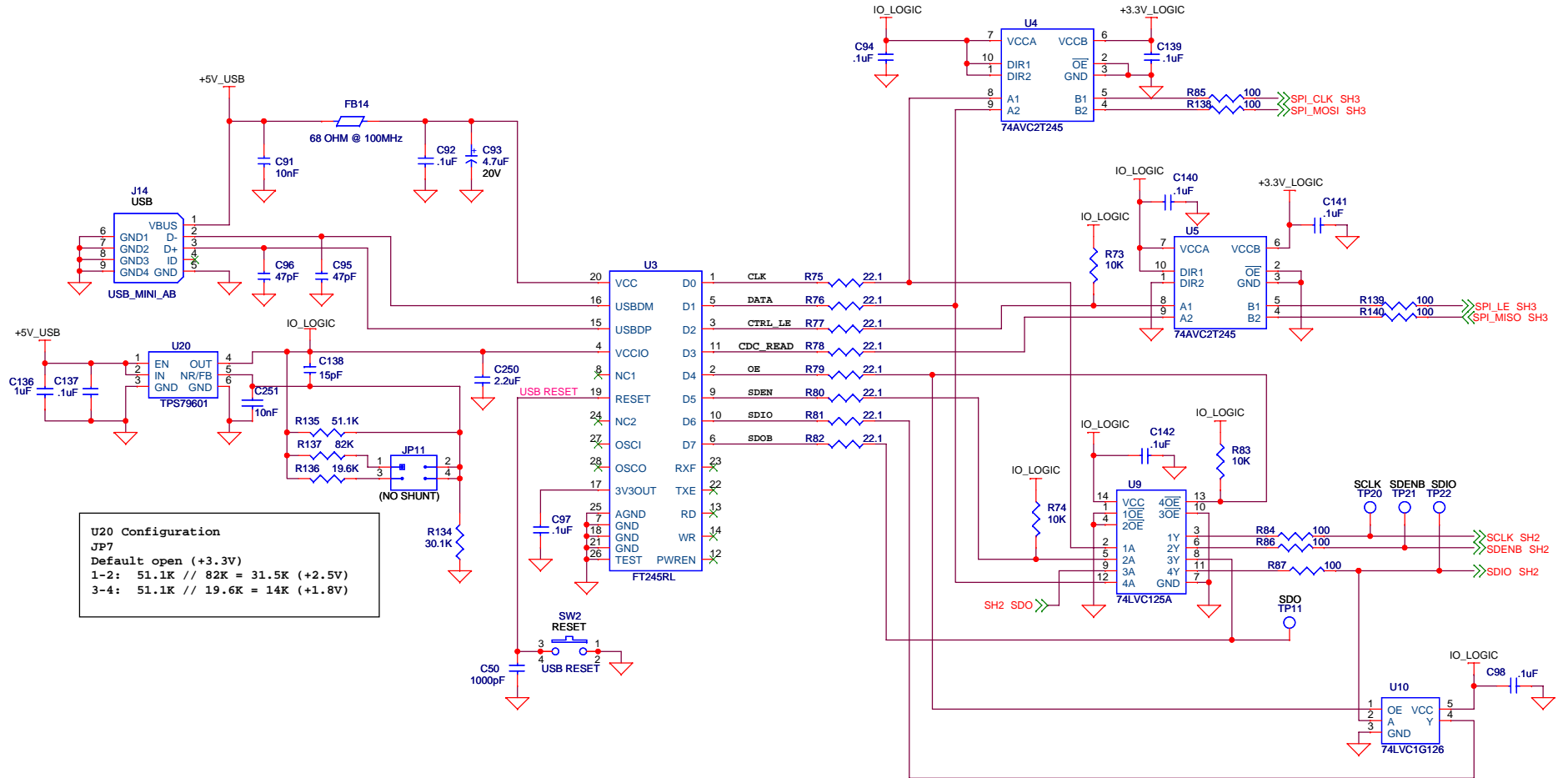


TEXAS INSTRUMENTS

Title: **DAC34H8X EVM**

Size: **B** Document Number: **INTERFACE** Rev: **A**

Date: **Tuesday, November 23, 2010** Sheet: **6** of **8**



U20 Configuration
 JP7
 Default open (+3.3V)
 1-2: 51.1K // 82K = 31.5K (+2.5V)
 3-4: 51.1K // 19.6K = 14K (+1.8V)

74AVC2T245

OE	DIR	OPERATION
L	L	B -> A
L	H	A -> B
H	X	ISOLATION

74LVC125A

OE	A	Y
L	H	H
L	L	L
H	X	Z

74LVC1G126

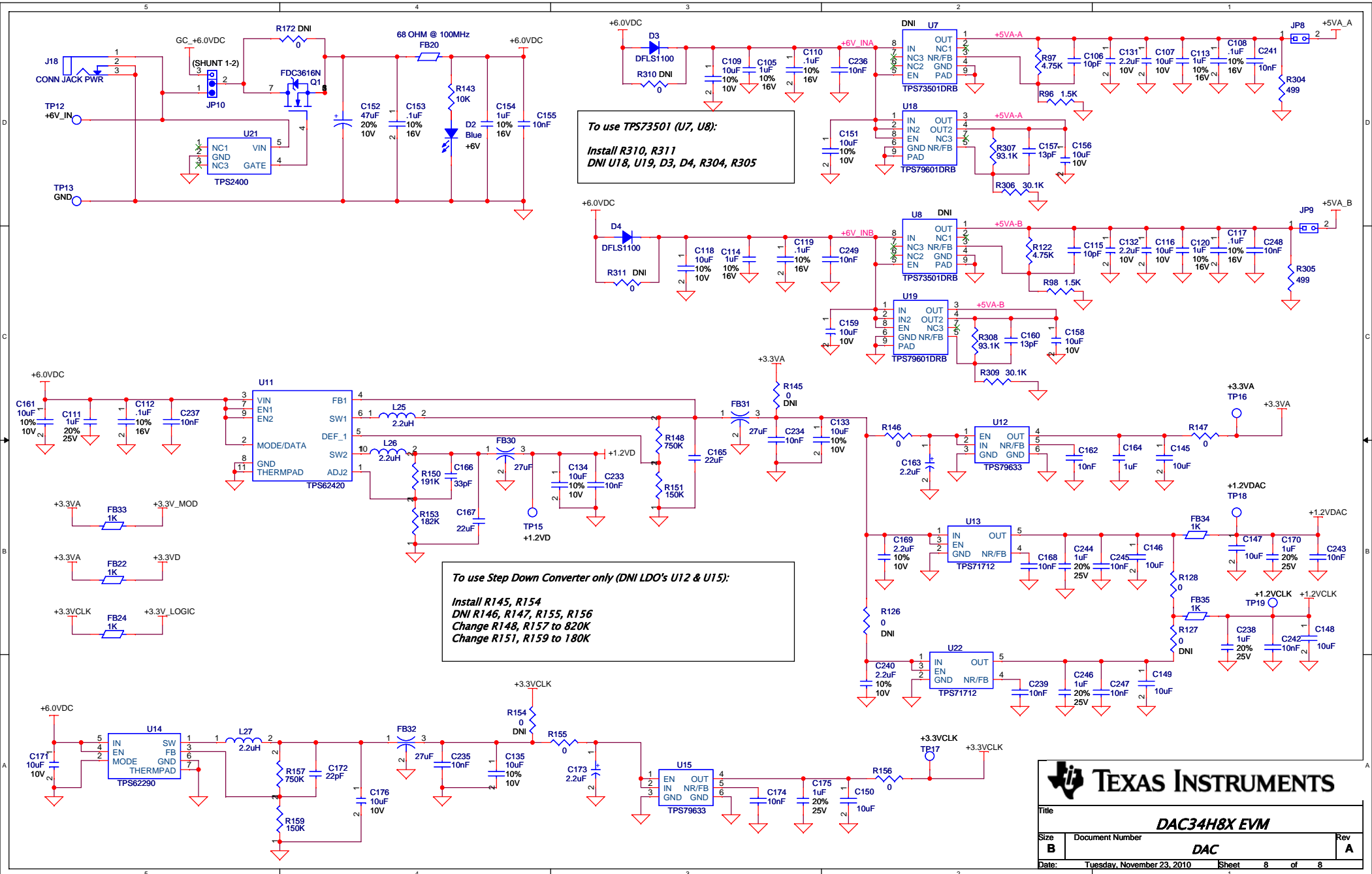
OE	A	Y
H	H	H
H	L	L
L	X	Z

TEXAS INSTRUMENTS

Title: **DAC34H8X EVM**

Size: **B** Document Number: **USB** Rev: **A**

Date: **Tuesday, November 23, 2010** Sheet: **7** of **8**



To use TPS73501 (U7, U8):
Install R310, R311
DNI U18, U19, D3, D4, R304, R305

To use Step Down Converter only (DNI LDO's U12 & U15):
Install R145, R154
DNI R146, R147, R155, R156
Change R148, R157 to 820K
Change R151, R159 to 180K

TEXAS INSTRUMENTS

Title: **DAC34H8X EVM**

Size: **B** Document Number: **DAC** Rev: **A**

Date: **Tuesday, November 23, 2010** Sheet: **8** of **8**