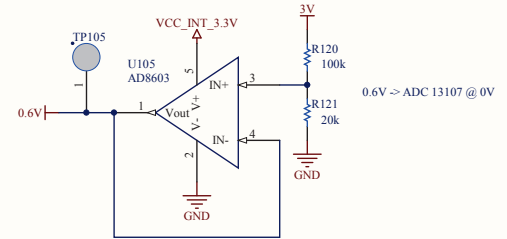
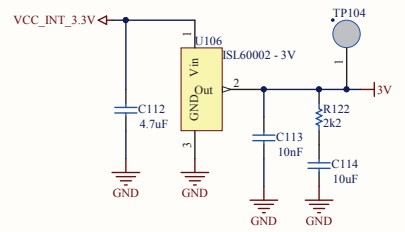


Load cell condition: 2mV/V -> 6.6mV @ max output
 $G = 5 + 420 \text{ k}/R_G = 200 \rightarrow 1.32\text{V}$ @ max output
 OBS! Max gain for AD8236 is 200



0.6V -> ADC 13107 @ 0V



Title		
ML6FPL01_AD.SchDoc		
Size	Number	Revision
A3		
Date:	22.05.2012	Sheet of
File:	C:\EIP\Projects\ML6FPL01_AD.SchDoc	Drawn By: