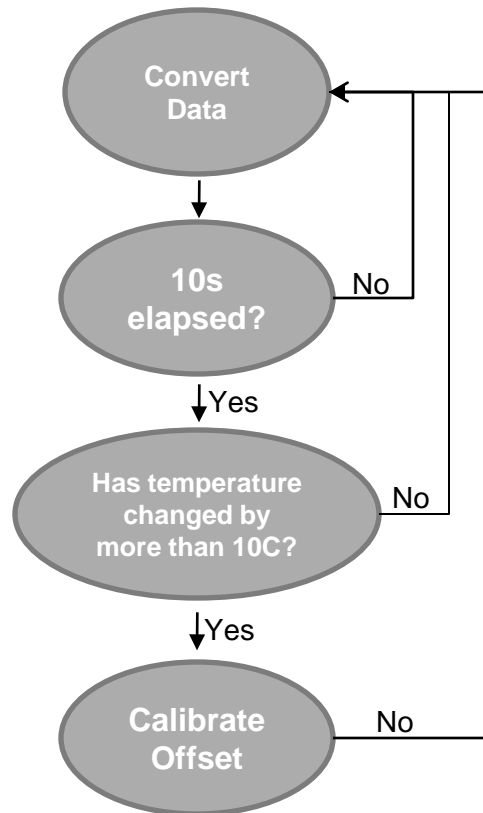


# Calibration via on-chip temperature measurement

- Works on ADS1146, ADS1147, ADS1148, ADS1246, ADS1247, ADS1248
- Offset drifts can be significantly improved by utilizing the on-chip temperature sensor or diode.
- High accuracy isn't required, simple looking for large deltas in temperature.

# Calibration via on-chip temperature measurement



# Calibration via on-chip temperature measurement

- **Uncalibrated drift:**
  - 32nV/C
- **20C Increment Calibration**
  - 5nV/C
- **10C Increment Calibration**
  - 3.5nV/C

