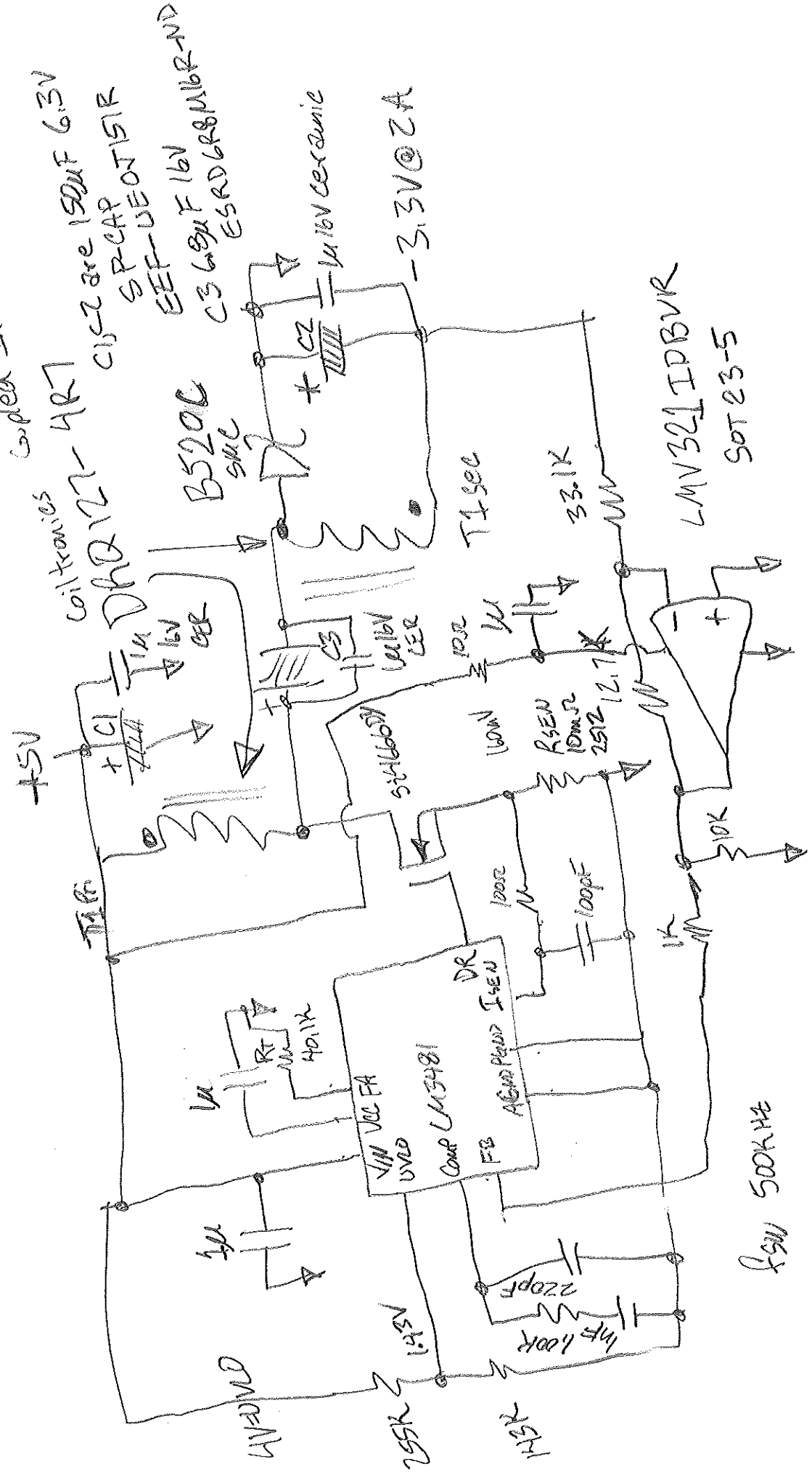


Coded Inductex.



Coiltronics
DHQ127-4R7

C1, C2 are 150uF 6.3V
SP-CAP
EEP-DEOT151R

B520C
500mA

C3 680F 16V
ESRD6R8M16R-ND

100nF ceramic

1000F 16V

T1 50C

33K

LMV321IPBVR

SOT23-5

RSW 500KHZ