

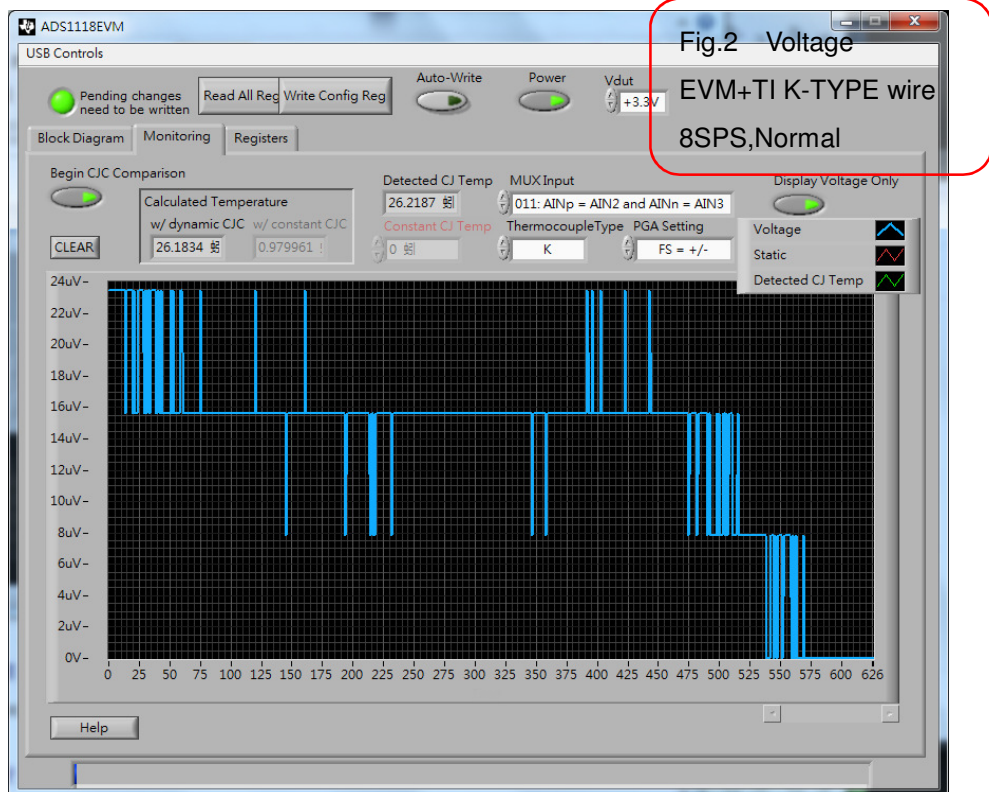
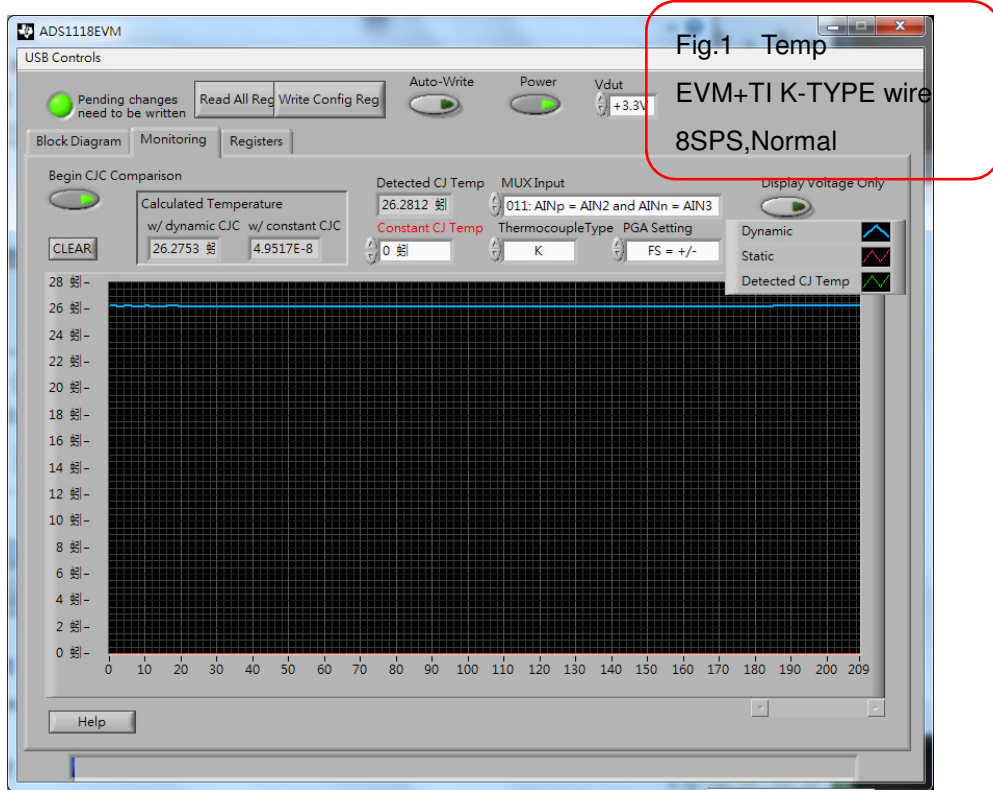
ADS1118EVM ISSUE 2014.06.18

Hi,sir:

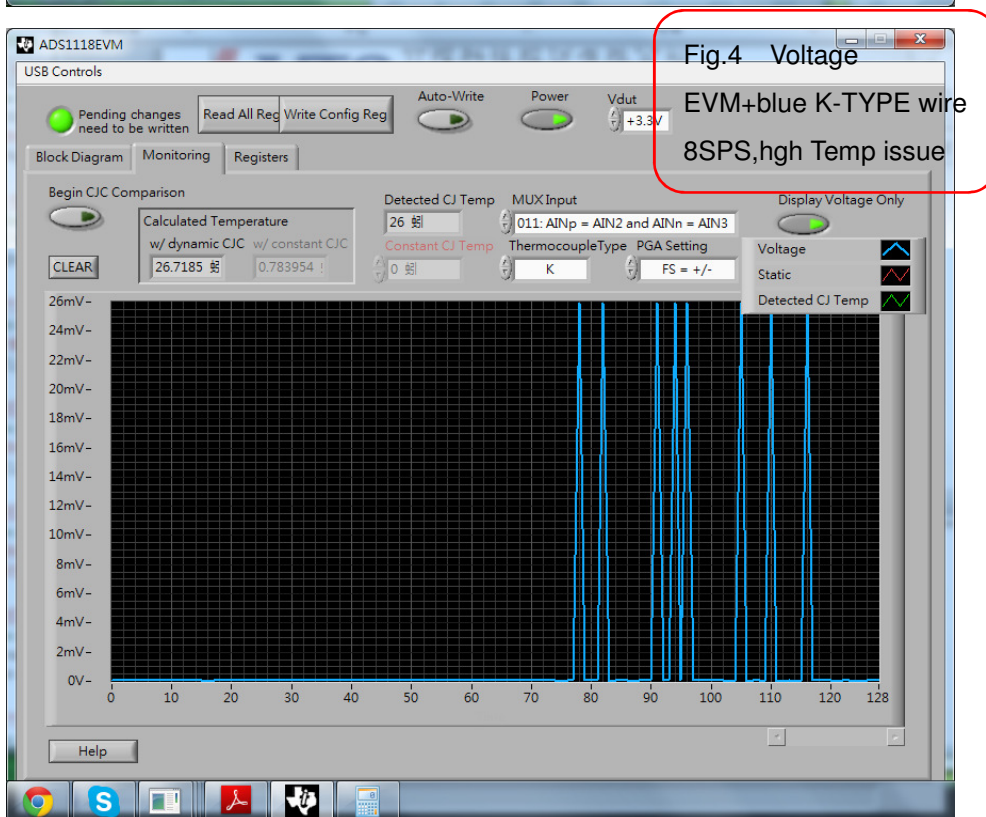
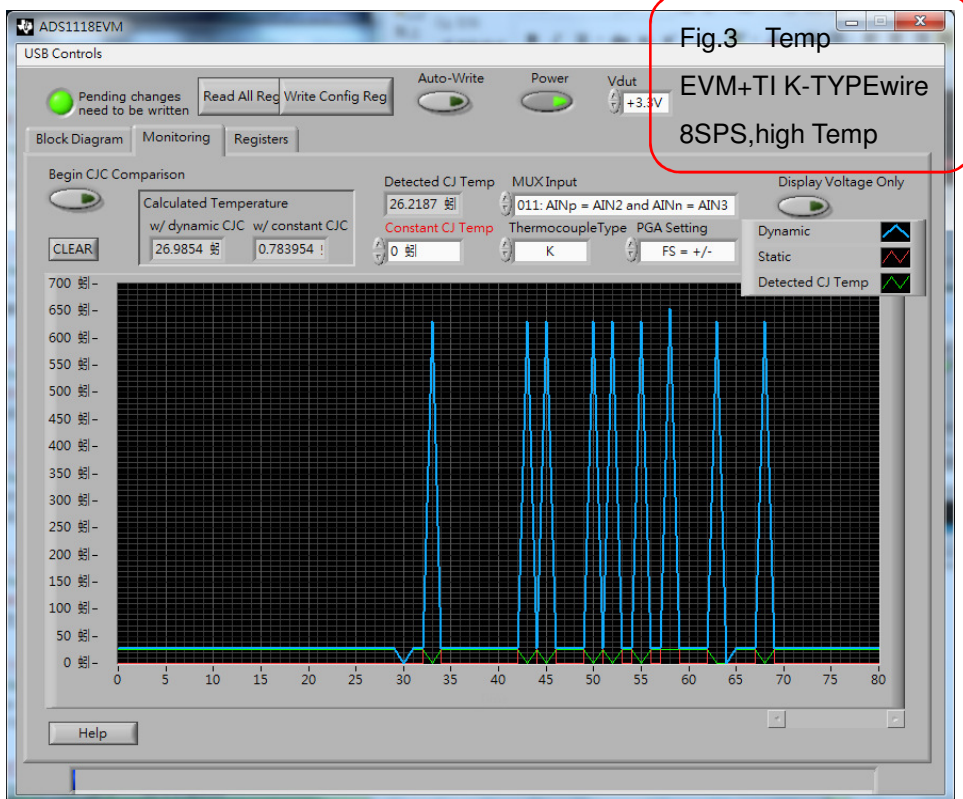
There is an issue with ADS1118EVM,detail issue description as below.

When ADS1118EVM software is running,It creat a curve about 26°C,7uV~24uV at normal.

(see Fig.1 、 Fig.2)



But it create a high temp curve (about 650°C, 26mV) when drag the running ADS1118EVM window. (see Fig.3、Fig.4)



We discover the high temp curve can be show when dragging the software window.

We have some experiment with 8SPS、16SPS、32SPS、64SPS、128SPS、250SPS、

475SPS、860SPS。The high temp curve is always show with 8SPS。The high temp curve is show sometimes with 16SPS、32SPS。The high temp curve is never show more than 64SPS。I consider maybe the issue source from the ADS1118EVM software, but I can't sure it.

Any suggestions for how to solve the issue on this ADS1118EVM would be greatly appreciated.

Thank you.