


REVISIONS
SEE SHEET 2

AR1443 EVM -010

TABLE OF CONTENTS

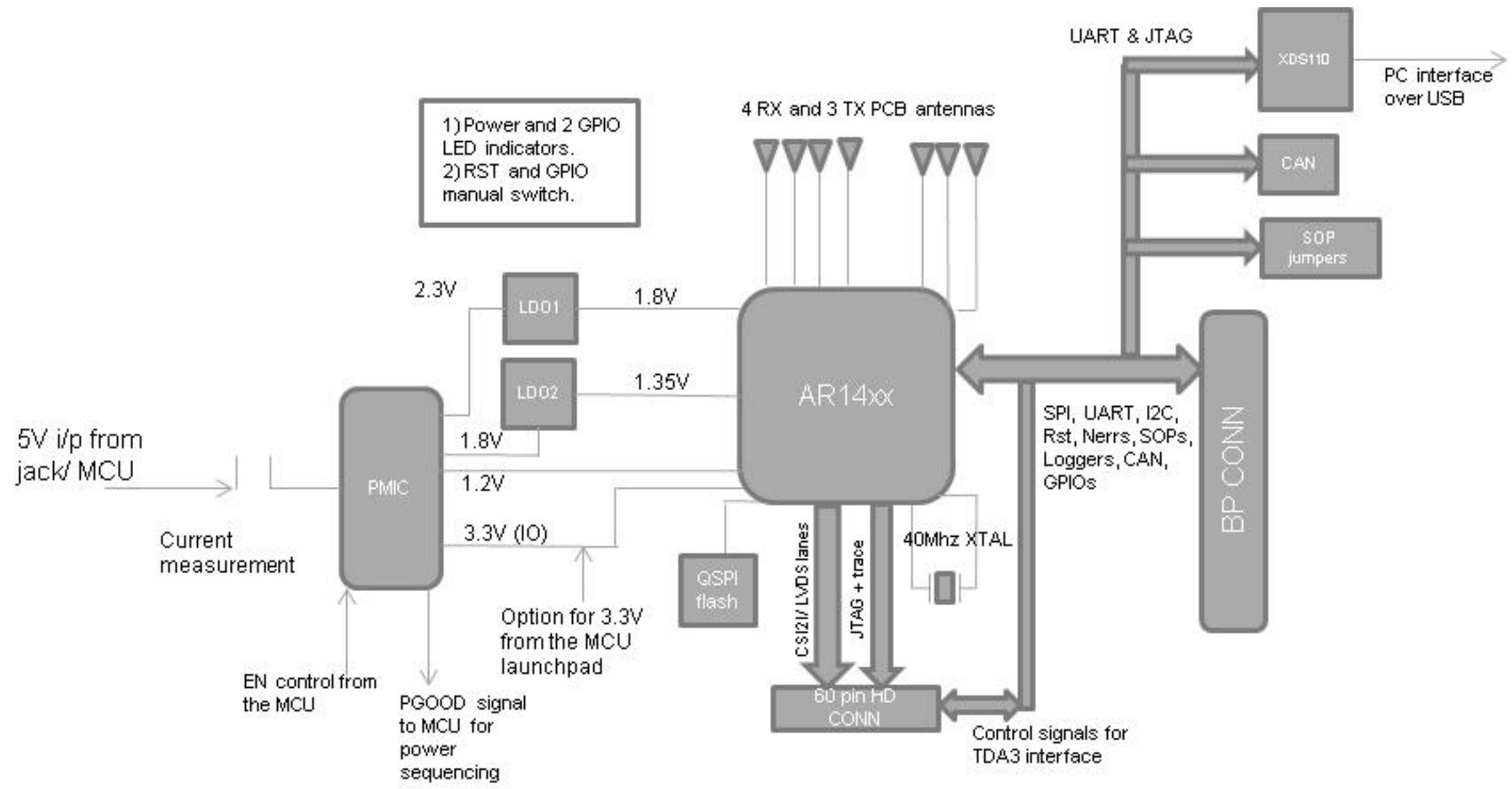
SHEET NO.	SHEET NAME
1	Contents
2	Block diagram
3	12xx DUT
4	12xx Decoupling caps
5	LDO_01 (1.8V Output)
6	LDO_02 (1.35V Output)
7	Pwr_RST_LEDs
8	PMIC
9	Flash Section
10	LP Connector
11	HD Connector
12	XDS110 Interface_1A
13	XDS110 Interface_1B
14	CAN Interface
15	SOP selection
16	Hardware

 **TEXAS INSTRUMENTS**
SEMICONDUCTOR OPERATIONS
09/5/2016

CODE IDENTITY NUMBER
01295

SIZE B	DRAWING NO. AR1443EVM - 010	REV E1
Contents		SHEET 1 OF 16

REVISIONS
SEE SHEET 2

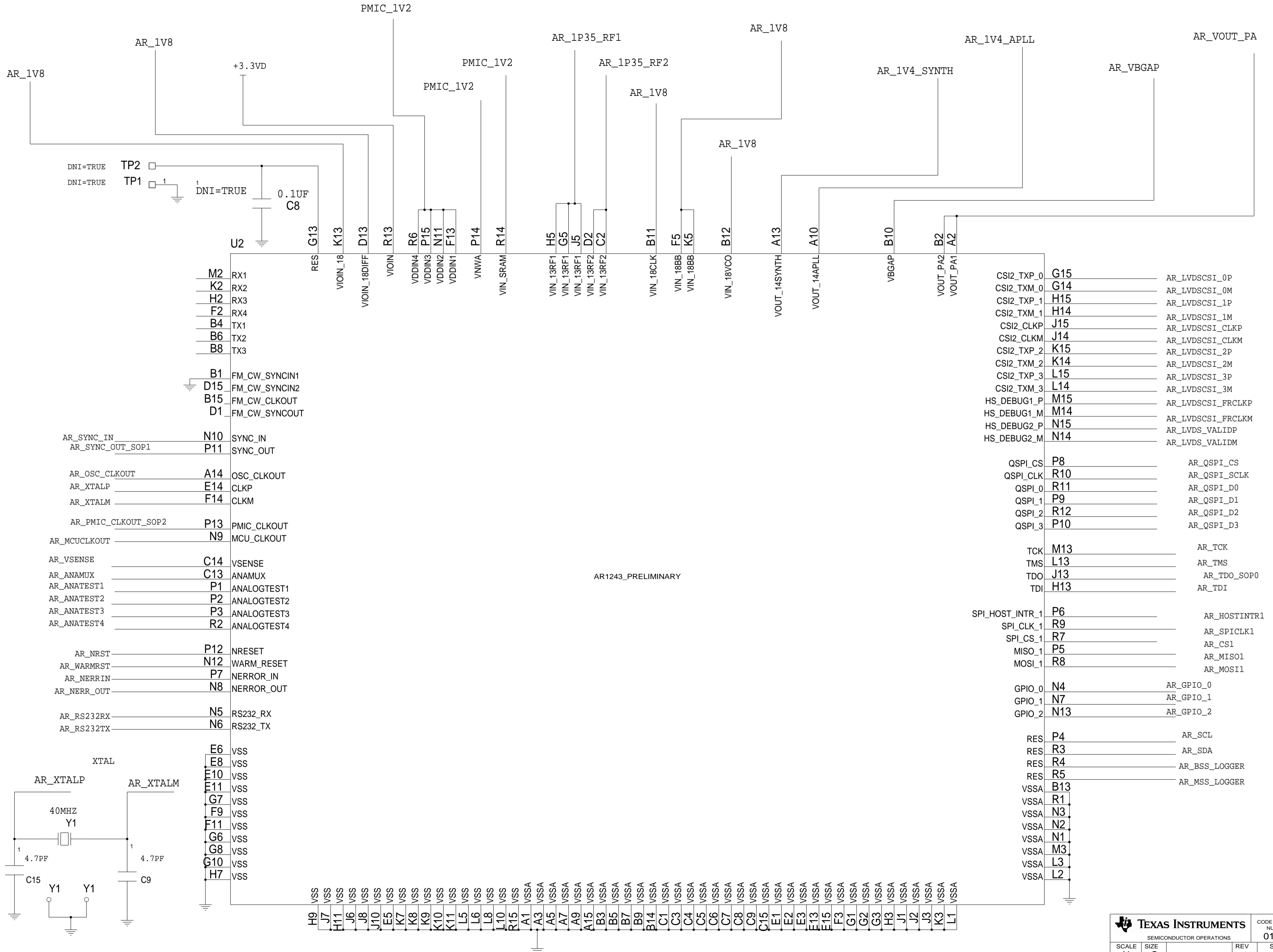


TEXAS INSTRUMENTS SEMICONDUCTOR OPERATIONS 09/5/2016		CODE IDENTITY NUMBER 01295
		SIZE B
Block diagram		SHEET 2 OF 16

AR1243/1443

REVISIONS

SEE SHEET 2



AR1243_PRELIMINARY

CSI2_TXP_0	G15	AR_LVDS_CSI_0P
CSI2_TXM_0	G14	AR_LVDS_CSI_0M
CSI2_TXP_1	H15	AR_LVDS_CSI_1P
CSI2_TXM_1	H14	AR_LVDS_CSI_1M
CSI2_CLKP	J15	AR_LVDS_CSI_CLKP
CSI2_CLKM	J14	AR_LVDS_CSI_CLKM
CSI2_TXP_2	K15	AR_LVDS_CSI_2P
CSI2_TXM_2	K14	AR_LVDS_CSI_2M
CSI2_TXP_3	L15	AR_LVDS_CSI_3P
CSI2_TXM_3	L14	AR_LVDS_CSI_3M
HS_DEBUG1_P	M15	AR_LVDS_CSI_FRCLKP
HS_DEBUG1_M	M14	AR_LVDS_CSI_FRCLKM
HS_DEBUG2_P	N15	AR_LVDS_VALIDP
HS_DEBUG2_M	N14	AR_LVDS_VALIDM
QSPI_CS	P8	AR_QSPI_CS
QSPI_CLK	R10	AR_QSPI_SCLK
QSPI_0	R11	AR_QSPI_D0
QSPI_1	P9	AR_QSPI_D1
QSPI_2	R12	AR_QSPI_D2
QSPI_3	P10	AR_QSPI_D3
TCK	M13	AR_TCK
TMS	L13	AR_TMS
TDO	J13	AR_TDO_SOP0
TDI	H13	AR_TDI
SPI_HOST_INTR_1	P6	AR_HOSTINTR1
SPI_CLK_1	R9	AR_SPICLK1
SPI_CS_1	R7	AR_CS1
MISO_1	P5	AR_MISO1
MOSI_1	R8	AR_MOSI1
GPIO_0	N4	AR_GPIO_0
GPIO_1	N7	AR_GPIO_1
GPIO_2	N13	AR_GPIO_2
RES	P4	AR_SCL
RES	R3	AR_SDA
RES	R4	AR_BSS_LOGGER
RES	R5	AR_MSS_LOGGER
VSSA	B13	
VSSA	R1	
VSSA	N3	
VSSA	N2	
VSSA	N1	
VSSA	M3	
VSSA	L3	
VSSA	L2	

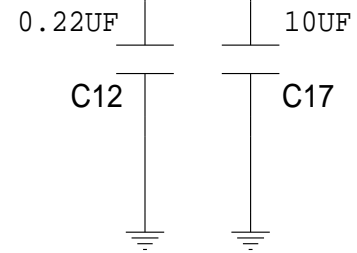
TEXAS INSTRUMENTS		CODE IDENTITY NUMBER 01295
SEMICONDUCTOR OPERATIONS		
SCALE	SIZE	REV
N	C	E1
AR1443EVM - 010		SHEET 3 OF 16

SUPPLY_DECOUPLING_CAPS

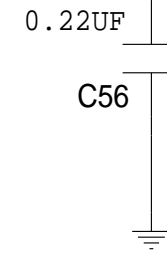
REVISIONS
SEE SHEET 2

VCOLDO SUPPLY

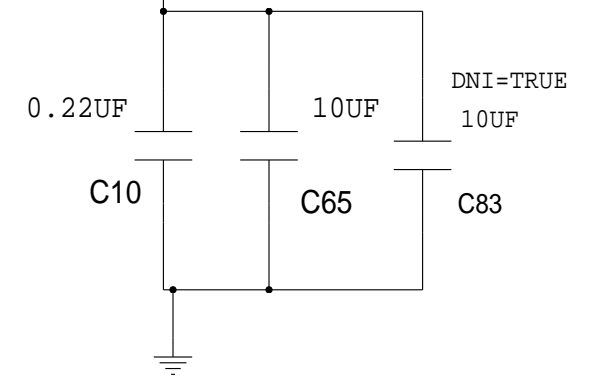
AR_1V8



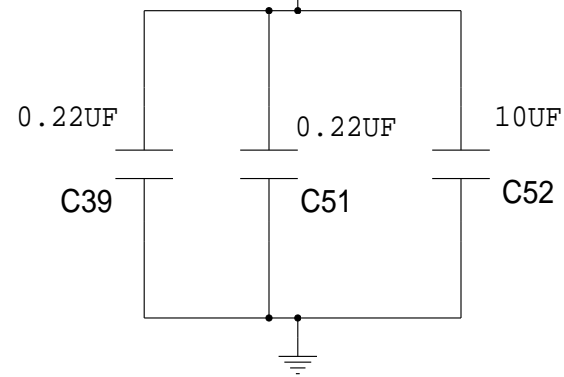
AR_VBGAP



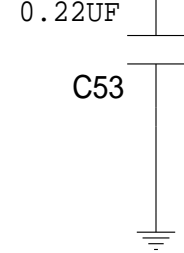
AR_VOUT_PA



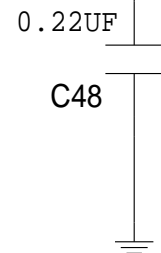
BB SUPPLY
AR_1V8



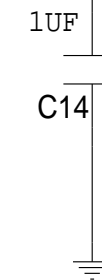
DIFF SUPPLY
AR_1V8



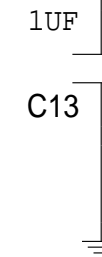
1P8V IO SUPPLY
AR_1V8



AR_1V4_SYNTH

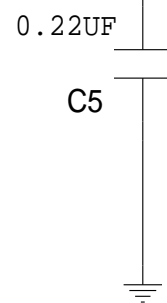


AR_1V4_APLL

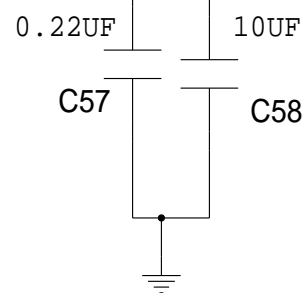


3V3IO SUPPLY

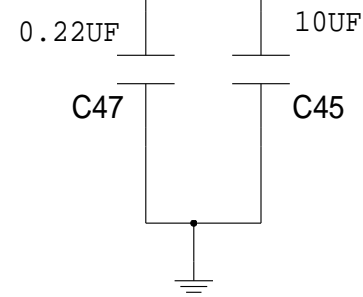
+3.3VD



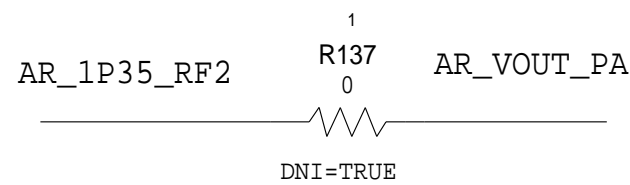
RF2 SUPPLY
AR_1P35_RF2



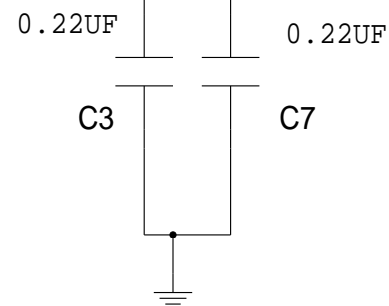
RF1 SUPPLY
AR_1P35_RF1



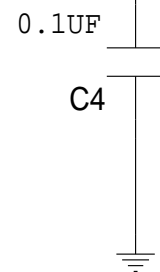
PROVISION FOR PROVIDING PA SUPPLY
FROM EXTERNAL LDO



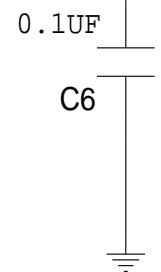
DIG SUPPLY
PMIC_1V2



SRAM SUPPLY
PMIC_1V2



VNWA SUPPLY
PMIC_1V2



TEXAS INSTRUMENTS SEMICONDUCTOR OPERATIONS 09/5/2016		CODE IDENTITY NUMBER
		01295
SIZE	DRAWING NO.	REV
B	AR1443EVM - 010	E1
12xx Decoupling caps		SHEET 4 OF 16

8

7

6

5

4

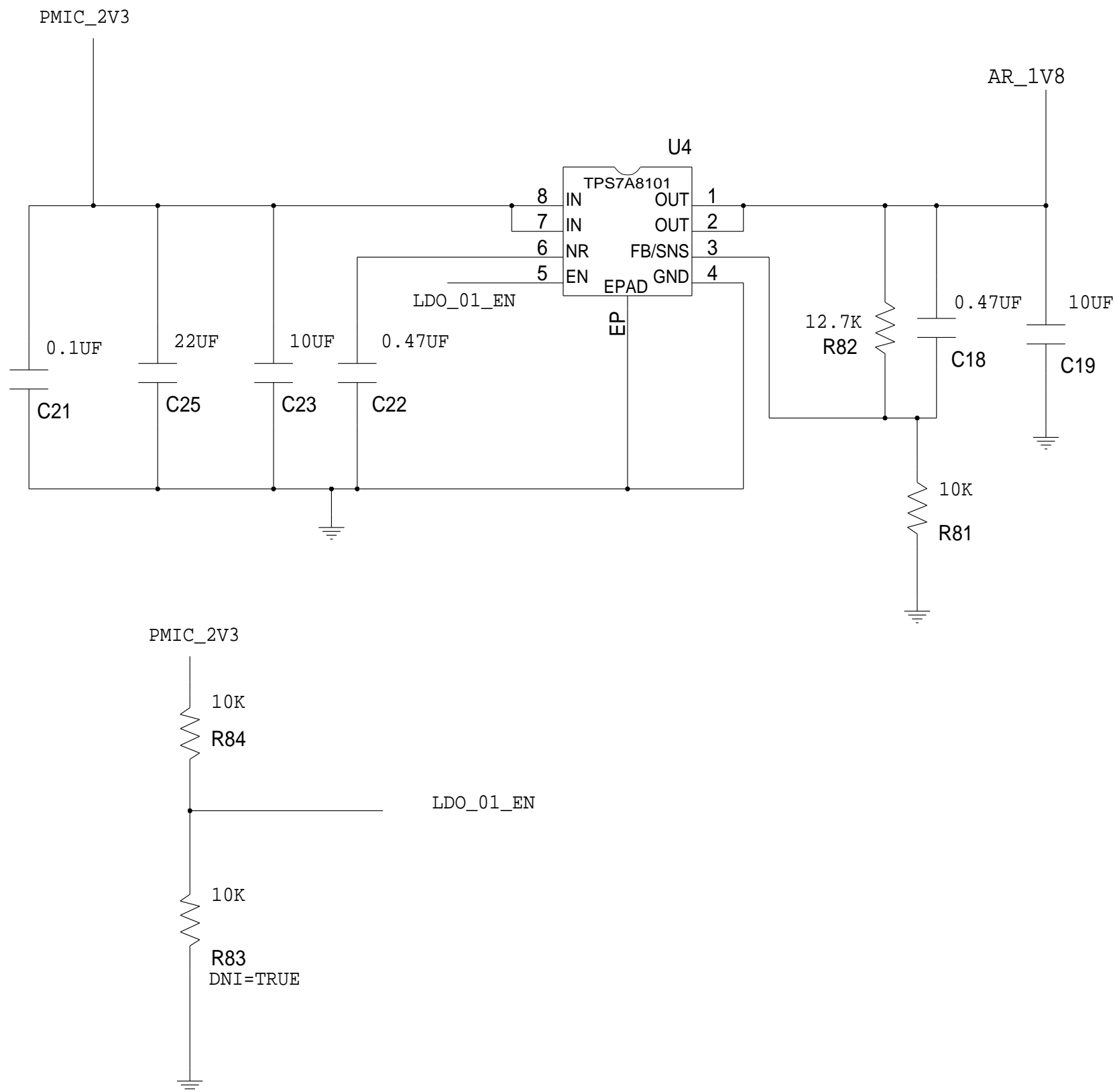
3


2

1

LDO_01 (1.8V OUTPUT)

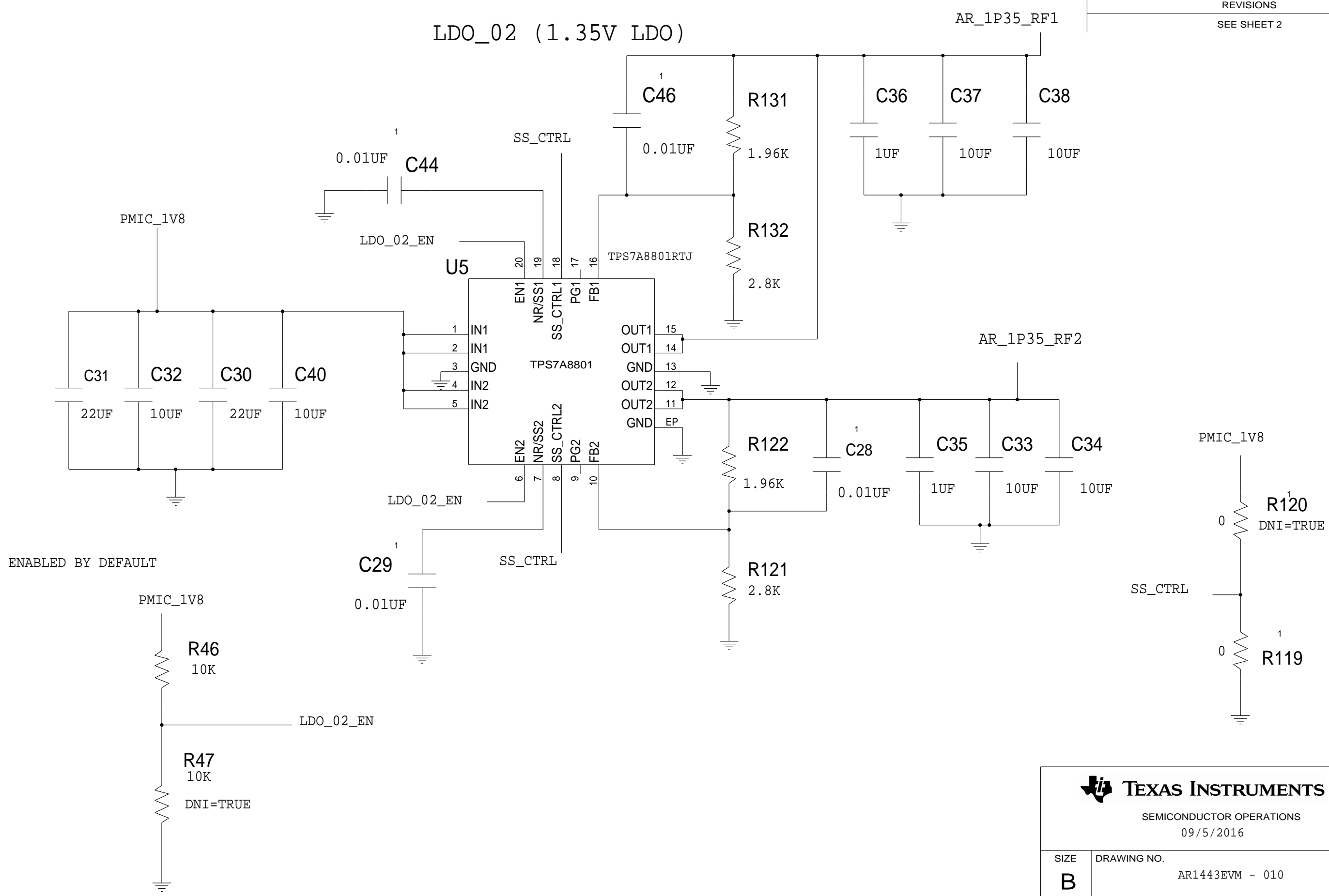
REVISIONS
SEE SHEET 2



 TEXAS INSTRUMENTS SEMICONDUCTOR OPERATIONS 09/5/2016		CODE IDENTITY NUMBER 01295
		SIZE B
LDO_01 (1.8V Output)		SHEET 5 OF 16

LDO_02 (1.35V LDO)

REVISIONS
SEE SHEET 2

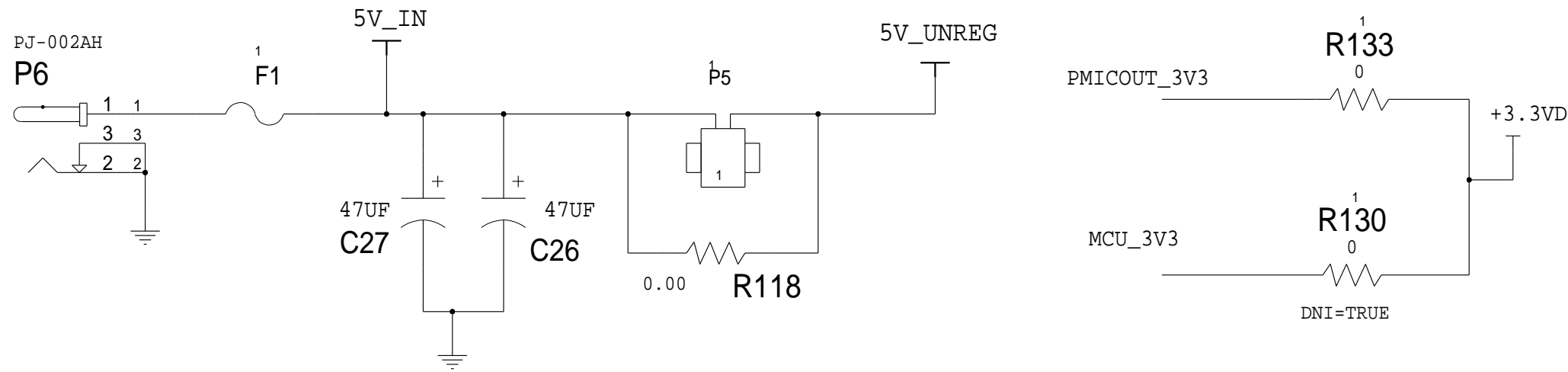


ENABLED BY DEFAULT

TEXAS INSTRUMENTS SEMICONDUCTOR OPERATIONS 09/5/2016		CODE IDENTITY NUMBER 01295
		REV E1
SIZE B	DRAWING NO. AR1443EVM - 010	SHEET 6 OF 16

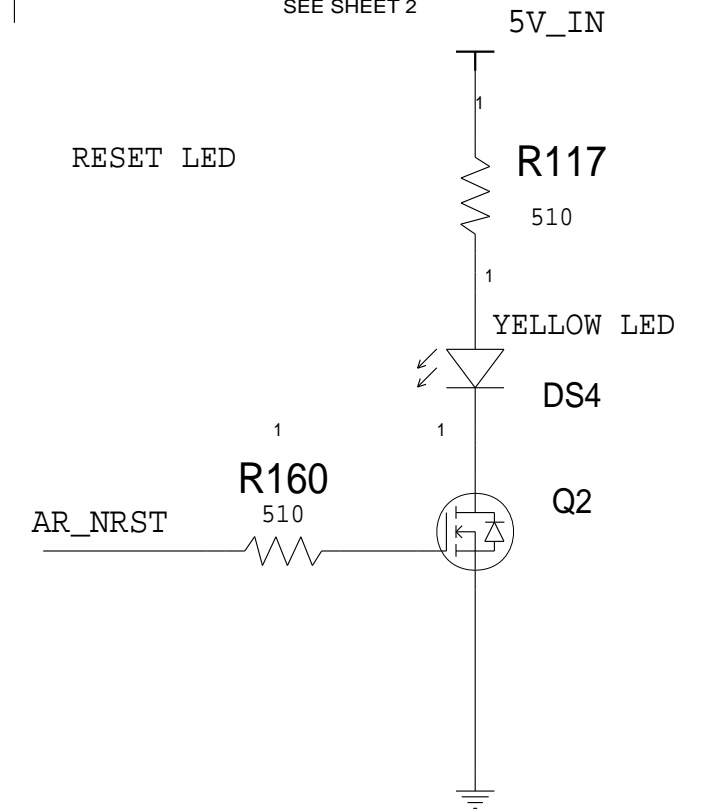
POWER SUPPLY CONNECTOR

3P3 SUPPLY FROM PMIC OR FROM THE MCU



REVISIONS

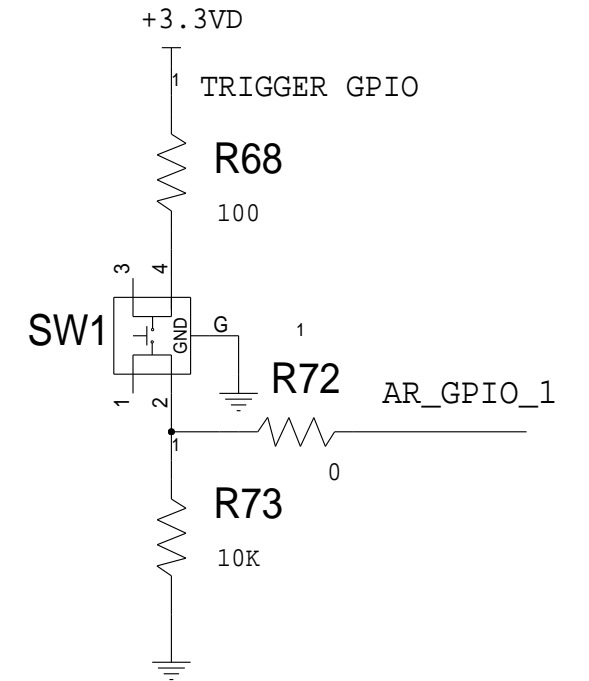
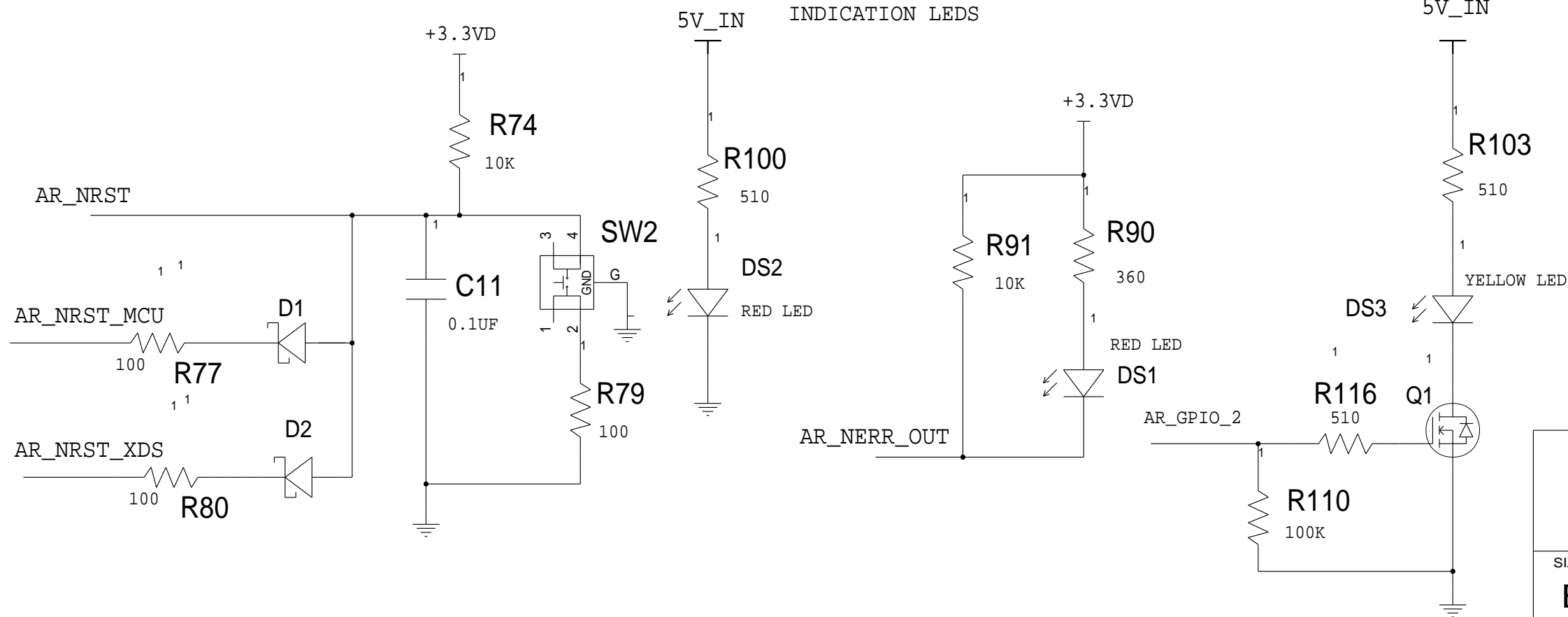
SEE SHEET 2



RESET AND LEDS

SW FOR MANUAL RESET

INDICATION LEDS



TEXAS INSTRUMENTS

SEMICONDUCTOR OPERATIONS
09/5/2016

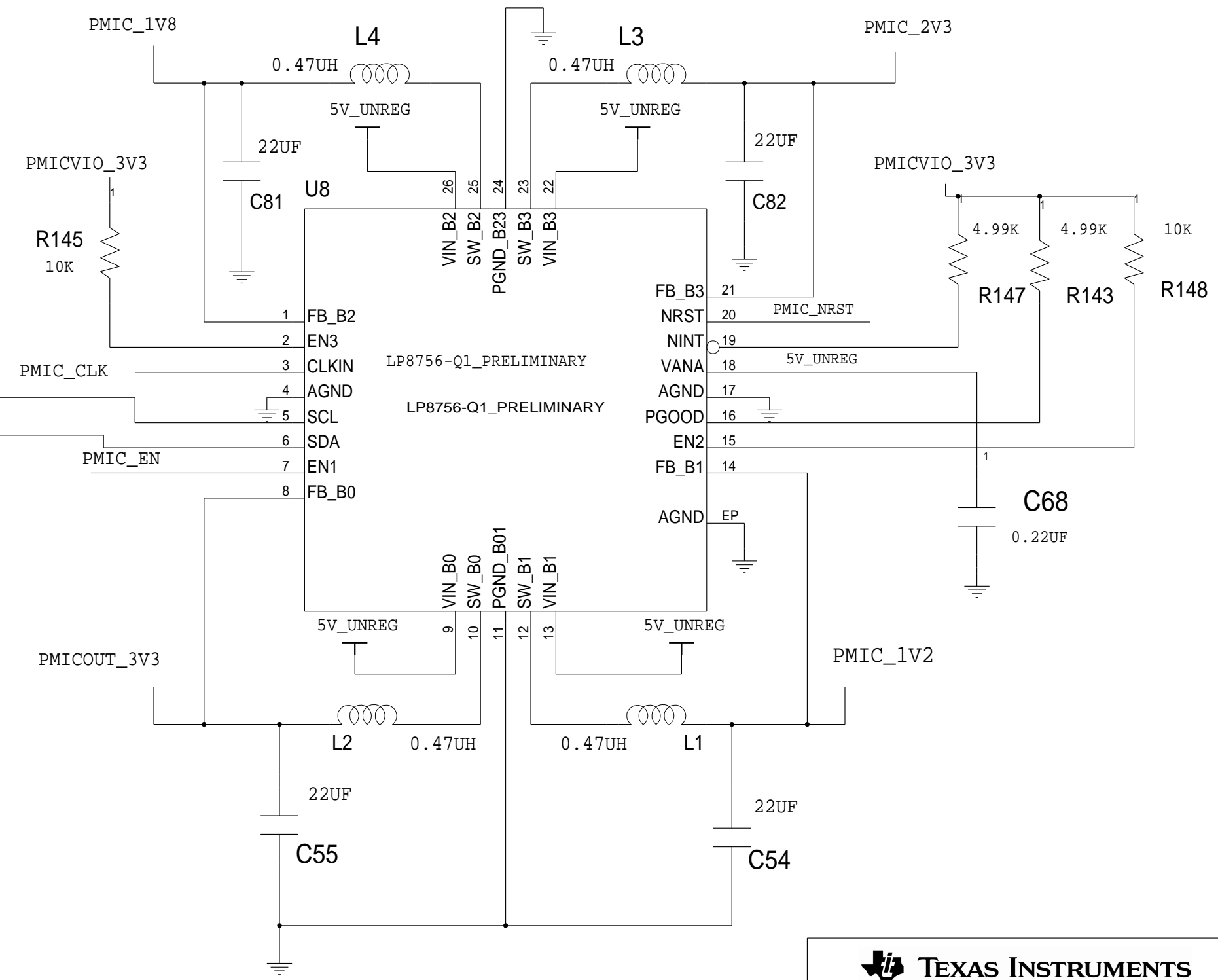
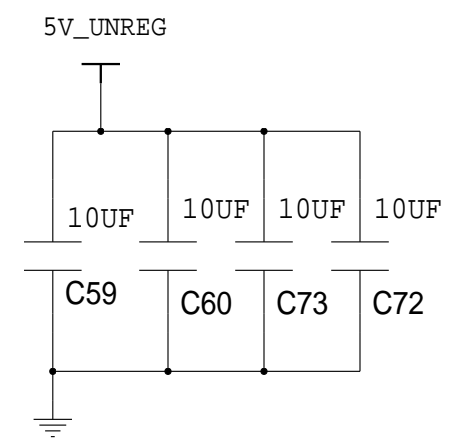
CODE IDENTITY NUMBER
01295

SIZE B	DRAWING NO. AR1443EVM - 010	REV E1
------------------	--------------------------------	-----------

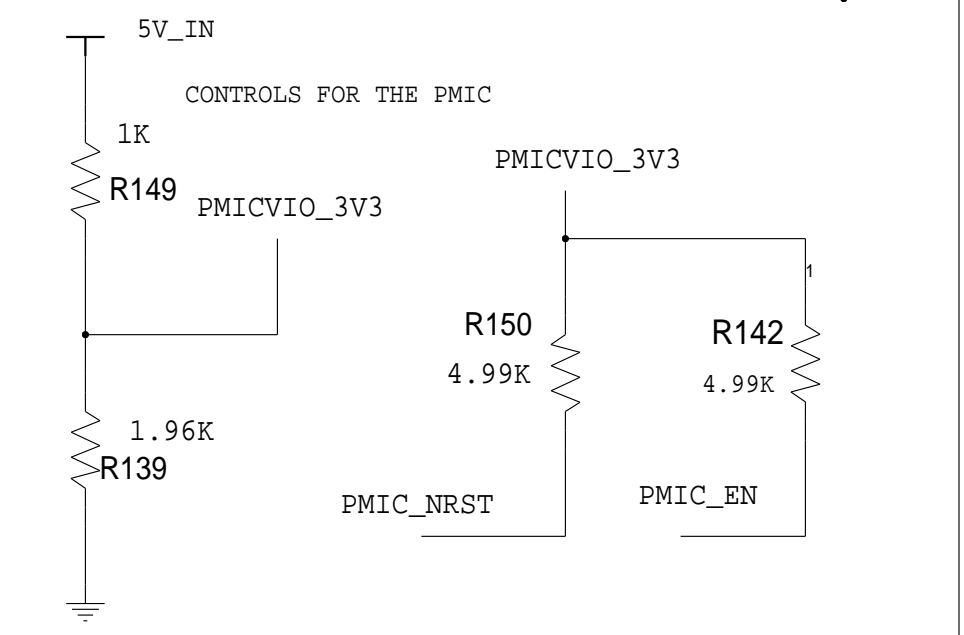
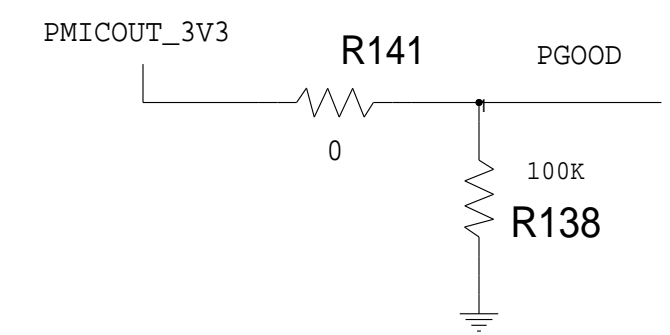
Pwr_RST_LEDS SHEET 7 OF 16

REVISIONS
SEE SHEET 2

PMIC (3.3V, 1.2V, 1.8V, 2.3V OUTPUTS)



THE 3V3 OUTPUT FROM PMIC IS USED AS PGOOD.



PG2.0 version of device shown here is not available. Only PG2.2 and onwards is available. PG2.2 has different pinout and package. Please contact your local field support team member for more details on this.

TEXAS INSTRUMENTS SEMICONDUCTOR OPERATIONS 09/5/2016		CODE IDENTITY NUMBER 01295
		REV E1
SIZE B	DRAWING NO. AR1443EVM - 010	SHEET 8 OF 16

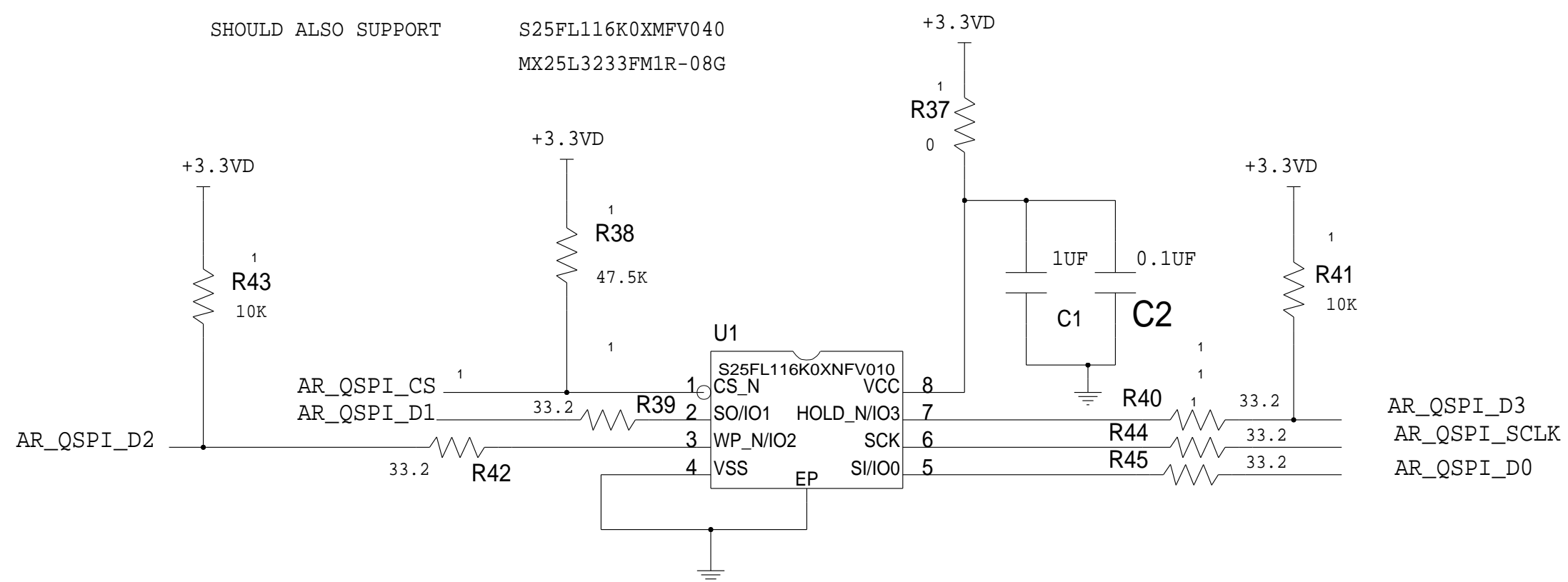
REVISIONS
SEE SHEET 2

QSPI FLASH

LAYOUT NOTE:

SHOULD ALSO SUPPORT

S25FL116K0XMFV040
MX25L3233FM1R-08G



TEXAS INSTRUMENTS SEMICONDUCTOR OPERATIONS 09/5/2016		CODE IDENTITY NUMBER 01295
		SIZE B
Flash Section		SHEET 9 OF 16

8

7

6

5

4

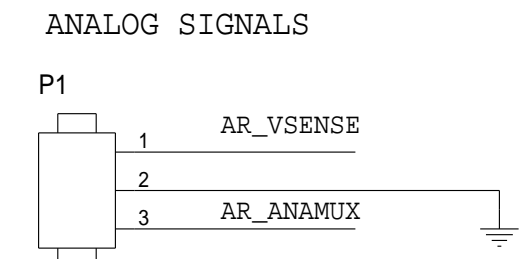
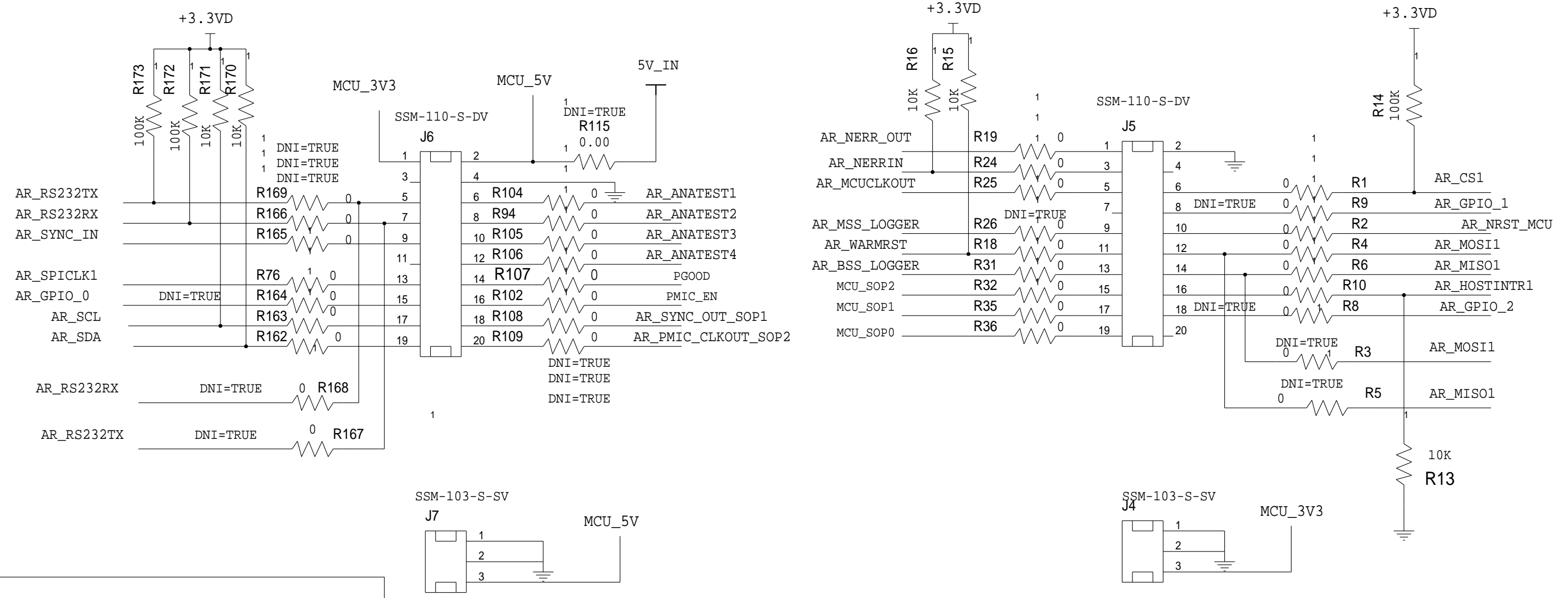
3

2

1

BP/LP CONNECTOR

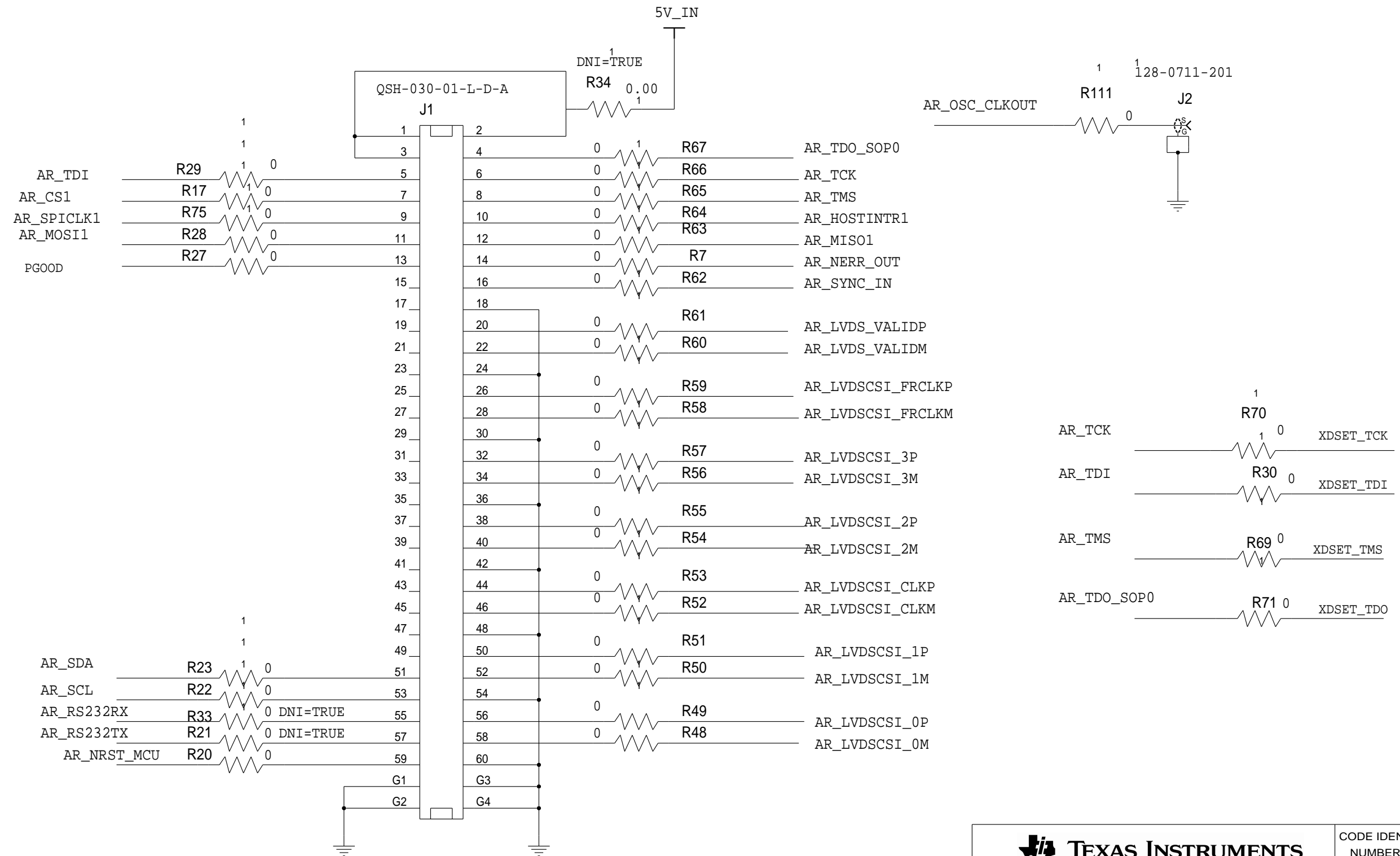
REVISIONS
SEE SHEET 2



TEXAS INSTRUMENTS SEMICONDUCTOR OPERATIONS 09/5/2016		CODE IDENTITY NUMBER 01295
		REV E1
SIZE B	DRAWING NO. AR1443EVM - 010	SHEET 10 OF 16

HD CONNECTOR FOR LVDS/CSI AND JTAG

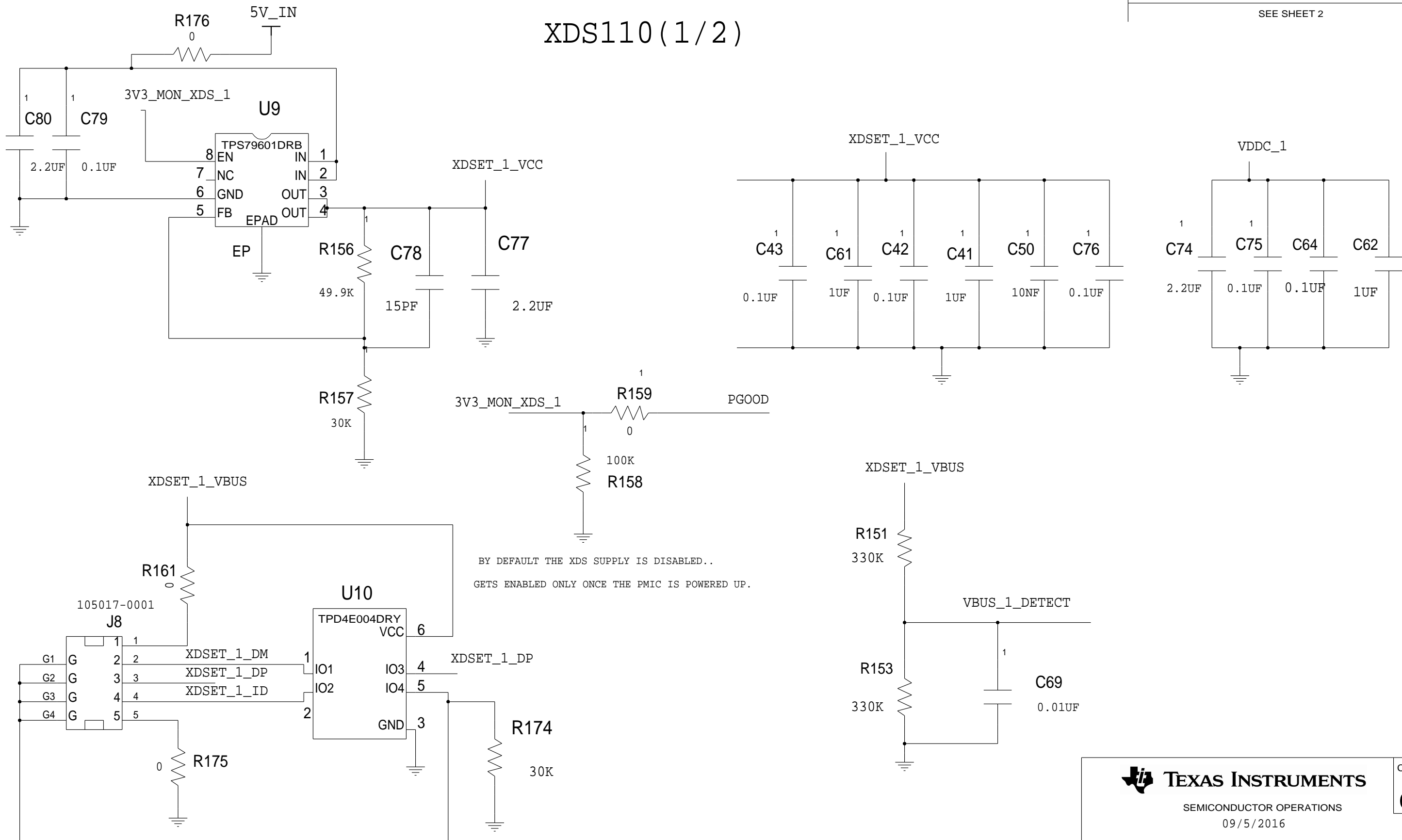
REVISIONS
SEE SHEET 2



TEXAS INSTRUMENTS		CODE IDENTITY NUMBER 01295
SEMICONDUCTOR OPERATIONS 09/5/2016		
SIZE	DRAWING NO.	REV
B	AR1443EVM - 010	E1
HD Connector		SHEET 11 OF 16

XDS110(1/2)

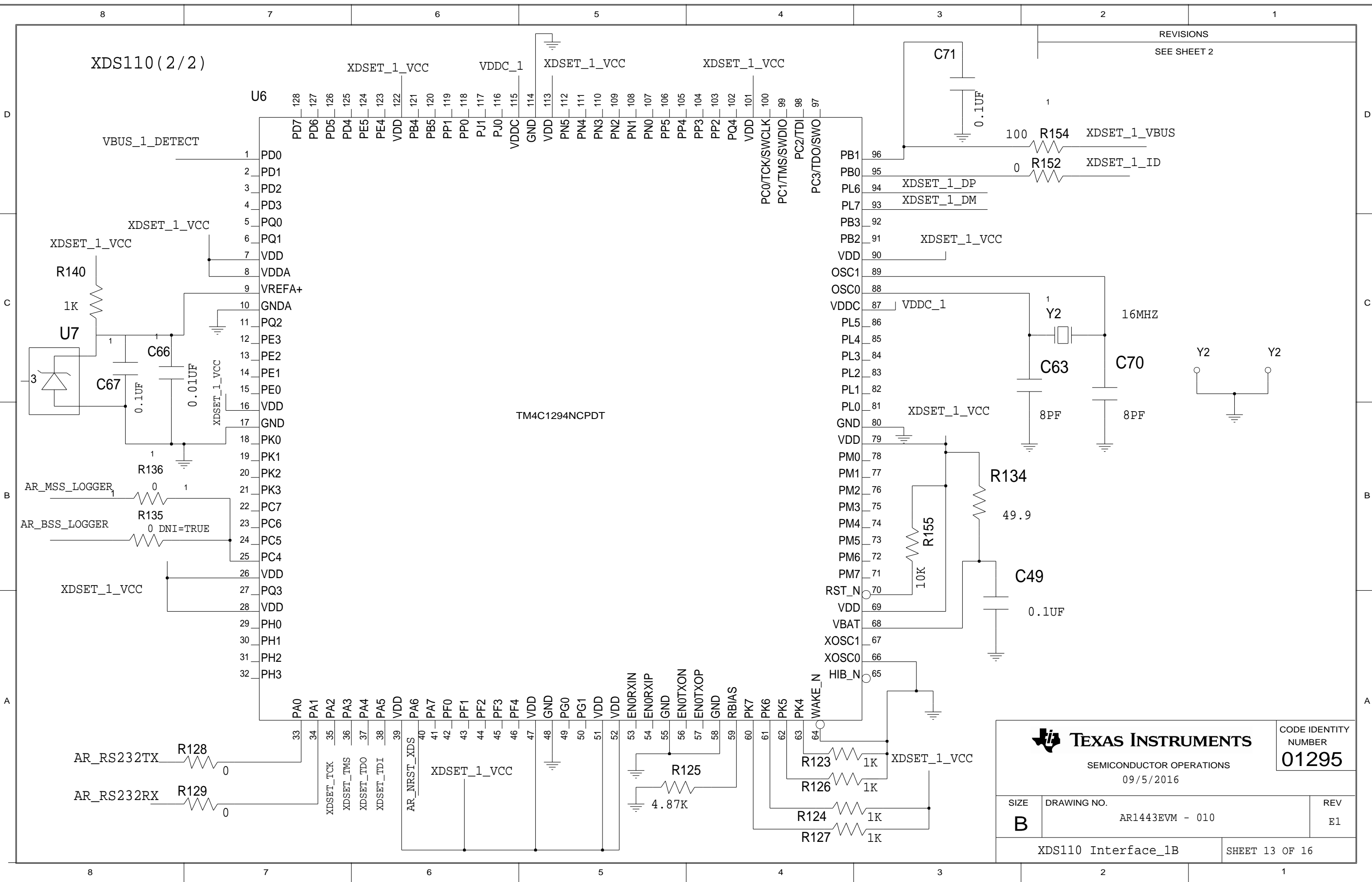
REVISIONS
SEE SHEET 2



TEXAS INSTRUMENTS SEMICONDUCTOR OPERATIONS 09/5/2016		CODE IDENTITY NUMBER 01295
		SIZE: B DRAWING NO.: AR1443EVM - 010 REV: E1
XDS110 Interface_1A		SHEET 12 OF 16

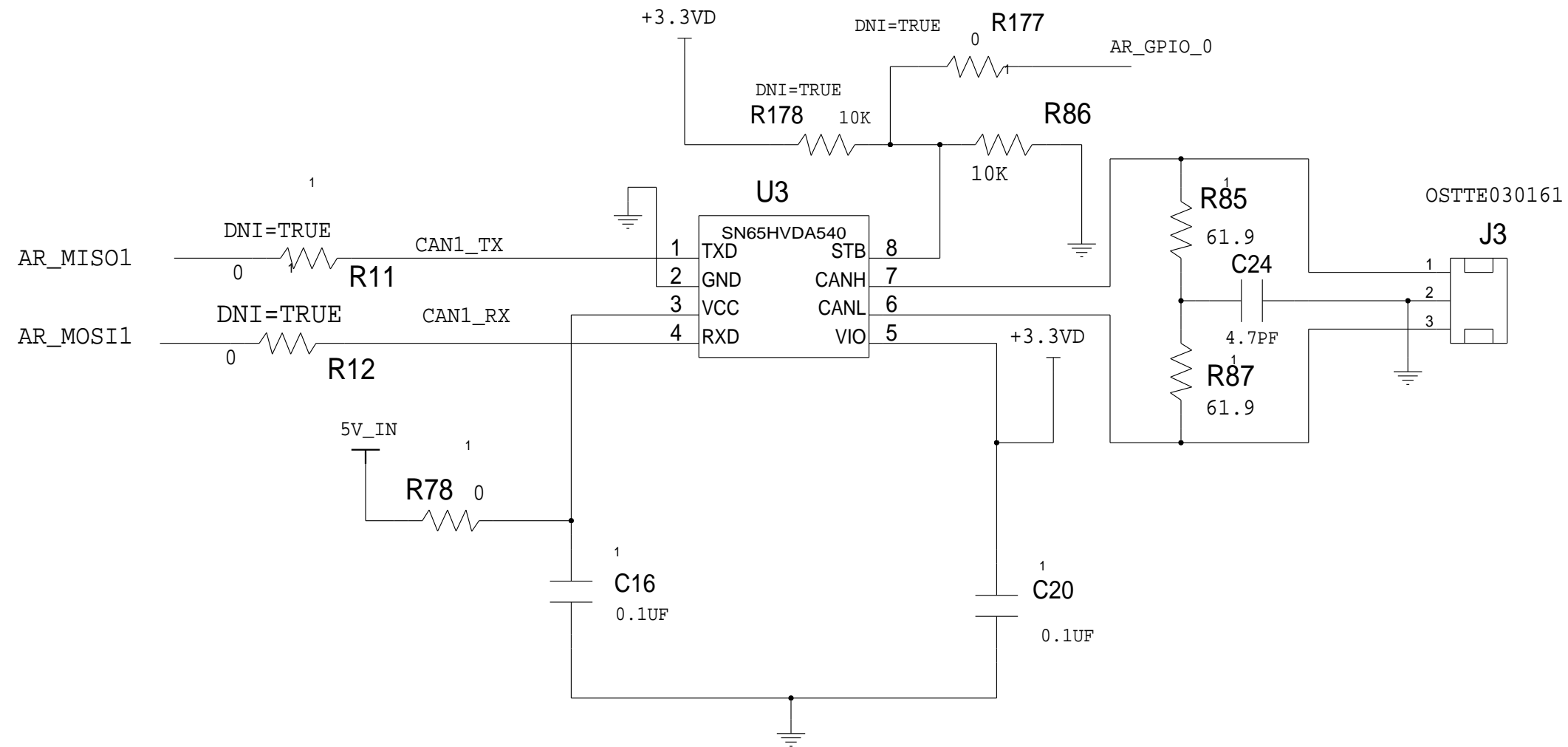
XDS110(2/2)


REVISIONS
SEE SHEET 2



REVISIONS
SEE SHEET 2

CAN INTERFACE



 TEXAS INSTRUMENTS SEMICONDUCTOR OPERATIONS 09/5/2016		CODE IDENTITY NUMBER 01295
		SIZE B
CAN Interface		SHEET 14 OF 16

8

7

6

5

4

3

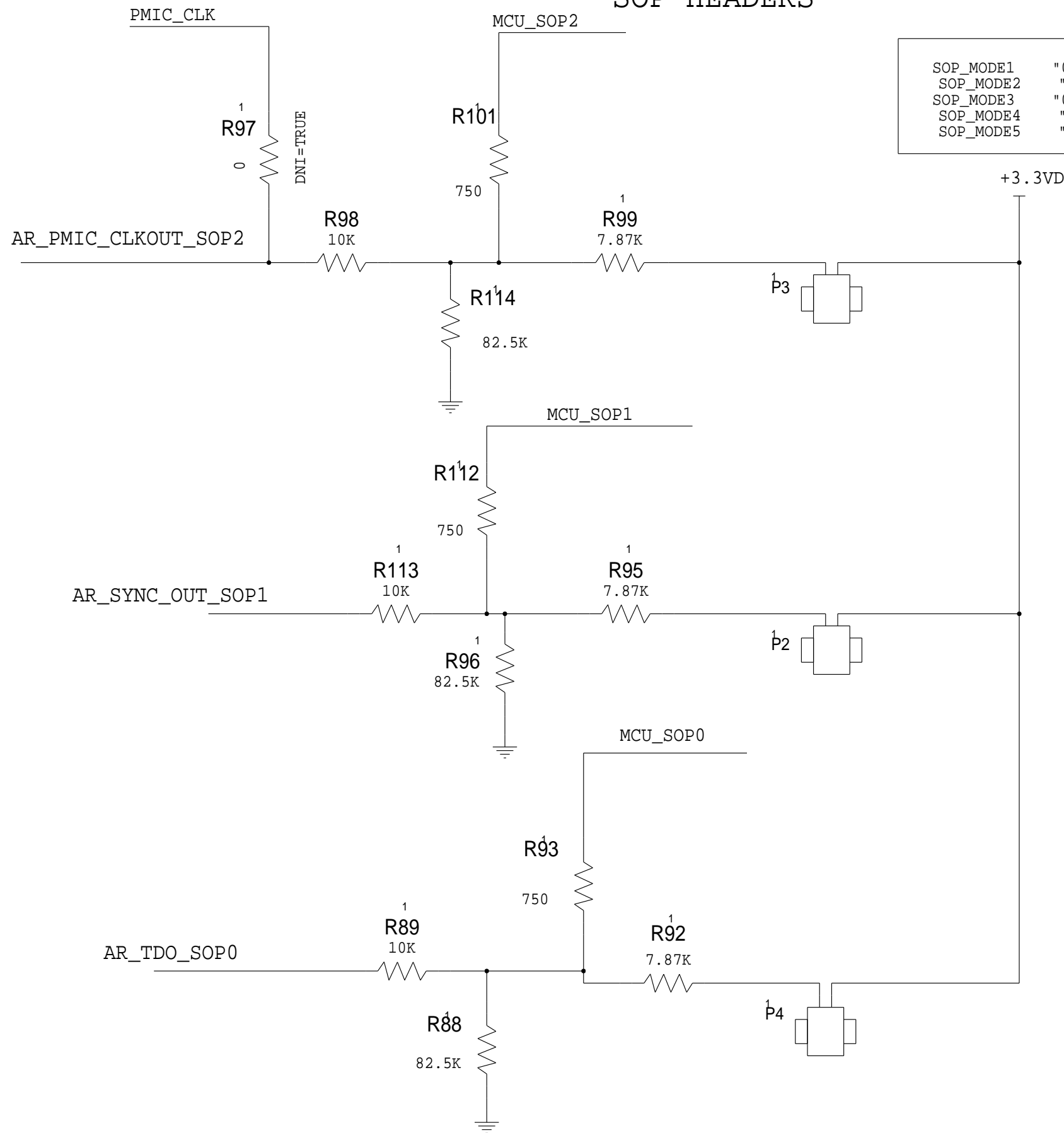
2

1

SOP HEADERS

REVISIONS
SEE SHEET 2

SOP_MODE1	"010"	SCAN/ATPG
SOP_MODE2	"011"	DEV/FLED/ORBIT
SOP_MODE3	"000"	THB
SOP_MODE4	"001"	FUNC - > DEFAULT VALUE FOR OUTPUTS
SOP_MODE5	"101"	DEV MANAGEMENT -> FOR FLASHING



TEXAS INSTRUMENTS SEMICONDUCTOR OPERATIONS 09/5/2016		CODE IDENTITY NUMBER 01295
		SIZE B
DRAWING NO. AR1443EVM - 010		REV E1
SOP selection		SHEET 15 OF 16

8

7

6

5

4

3

2

1

REVISIONS
SEE SHEET 2

- FD1
- FD2
- FD3
- FD4
- FD5
- FD6

PCB LOGO

TEXAS INSTRUMENTS

PCB LOGO

ESD SENSITIVE

PCB LOGO

FCC DISCLAIMER

PCB LOGO

LAUNCHPAD COMPATIBLE

ASSEMBLY NOTES:

ASSEMBLIES MUST BE CLEAN AND FREE FROM FLUX AND ALL CONTAMINANTS. USE OF NO CLEAN FLUX IS NOT ACCEPTABLE
 ASSEMBLIES MUST COMPLY WITH WORKMANSHIP STANDARDS IPC-A-610 CLASS 2, UNLESS OTHERWISE SPECIFIED
 COMPONENTS MARKED "DNI = TRUE" WILL NOT BE ASSEMBLED



TEXAS INSTRUMENTS

SEMICONDUCTOR OPERATIONS
09/5/2016

CODE IDENTITY
NUMBER
01295

SIZE
B

DRAWING NO.
AR1443EVM - 010

REV
E1

Hardware

SHEET 16 OF 16