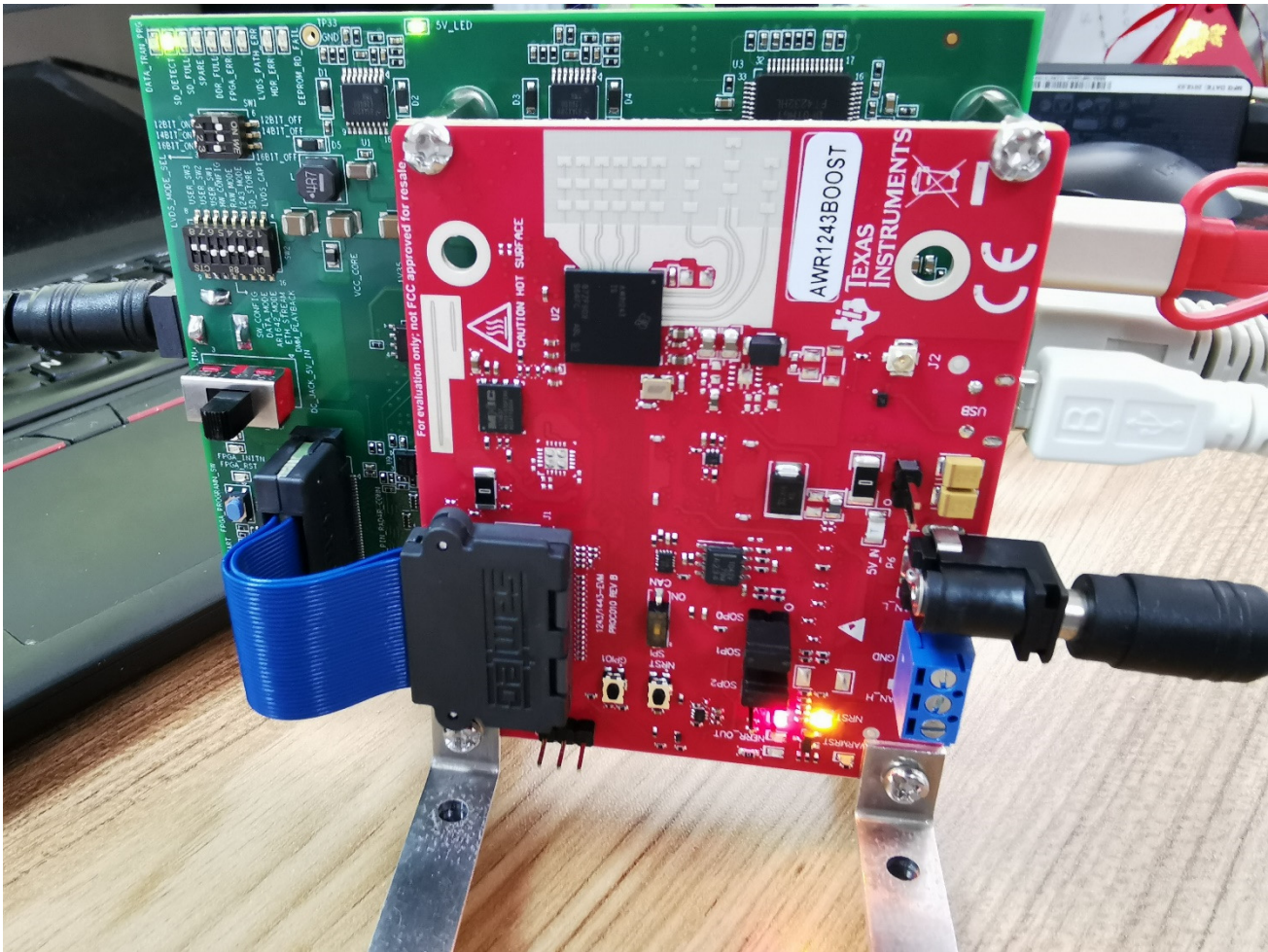
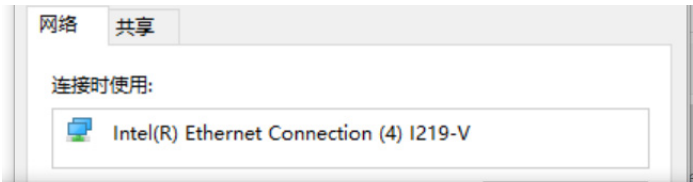
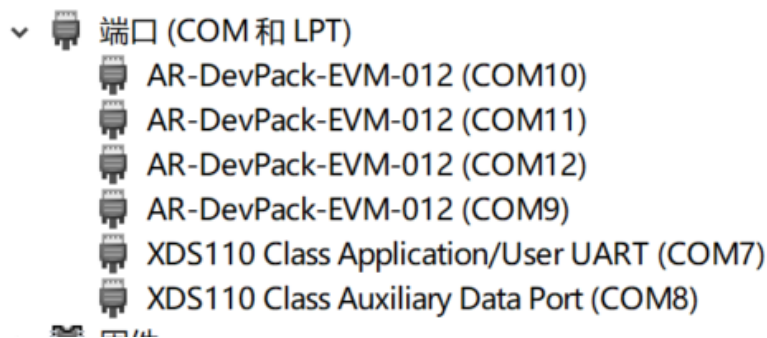
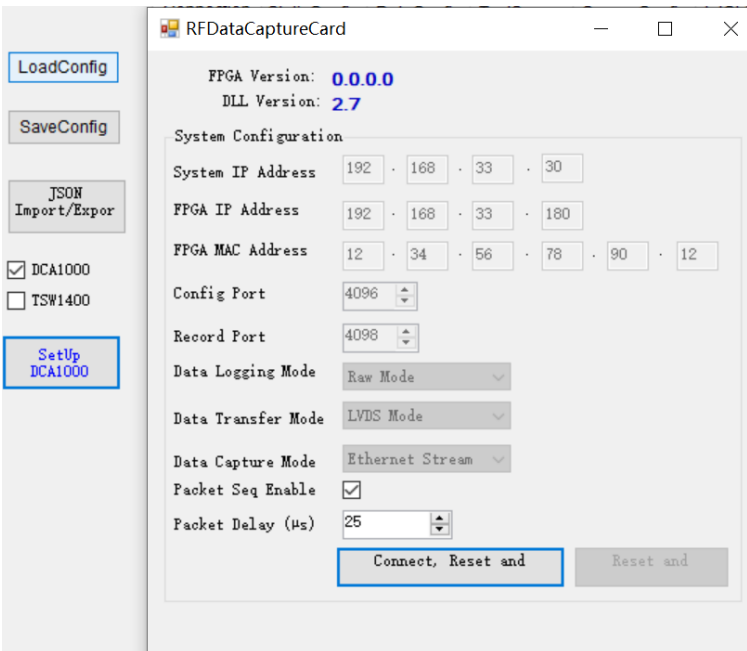


# AWR1243+DCA1000EVM problem





Internet 协议版本 4 (TCP/IPv4) 属性



XDS110 Class Application/User UART (COM7) 属性



File View Tools ToolBars Window Help

**RadarAPI**

MSSMon DynamicChirpCfg ClockOutCfg CalibDataCfg Import\_Export

Connection StaticConfig DataConfig TestSource SensorConfig IntChirpBlkCtlCfg RegOp ContStream BPMConfig AdvFrameConfig RampTimingCalculator LoopBack ExtFilterProg CalibConfig DigitalMon Analog

**Board Control**

Reset Control

Reset

Set (1)

SOP Mode controlled via jumper on EVM

**RS232 Operations**

COM Port COM7

Baud Rate 115200

Connect (2)

**No. of Devices Detected:** 1

**FTDI Connectivity Status:** Connected

**RS232 Connectivity Status:** Disconnected

**SPI Connectivity Status:** Disconnected

Device Status:

Die Id:

BSS firmware version:

BSS Patch firmware ver:

MSS firmware version:

MSS Patch firmware ver:

GUI Version: 2.0.0.2

Radar Link Version: 1.1.0.22 (16/08/18)

Post Proc Version: 4.75

**Operating Frequency**

☐ 60 GHz

☒ 77 GHz

**Device Variant**

☒ XWR12xx ☐ XWR6843

☐ XWR14xx ☐ XWR1843

☐ XWR16xx

**Files**

BSS FW: ... Load (3)

MSS FW: ... Load (4)

Config File: ... Load

**SPI Operations**

SPI Connect (5)

RF Power-up (6)

**Output**

Script Messages Only Exc: Inc:

```
[11:34:39] [RadarAPI]: Status: Passed
[11:34:39] [RadarAPI]: Closing Gpio Control Port ()
[11:34:39] [RadarAPI]: Status: Passed
[11:34:39] [RadarAPI]: arl.SOPControl(2)
[11:34:39] [RadarAPI]: Status: Passed
[11:34:41] [RadarAPI]: arl.Connect
(7,115200,1000)
[11:34:43] [RadarAPI]: Error: Connection failed:
Calling_ConnectTarget returned 3
[11:34:43] [RadarAPI]: arl.Calling_IsConnected()
[11:34:43] [RadarAPI]: arl.SaveSettings('C:
\Users\yyxio\AppData\Roaming\RSTD\arlgui.ini')
[11:35:50] [RadarAPI]: arl.Connect
(7,921600,1000)
[11:35:53] [RadarAPI]: Error: Connection failed:
Calling_ConnectTarget returned 3
[11:35:53] [RadarAPI]: arl.Calling_IsConnected()
[11:35:53] [RadarAPI]: arl.SaveSettings('C:
\Users\yyxio\AppData\Roaming\RSTD\arlgui.ini')
[11:36:01] [RadarAPI]: arl.Connect
(7,115200,1000)
[11:36:03] [RadarAPI]: Error: Connection failed:
Calling_ConnectTarget returned 3
[11:36:03] [RadarAPI]: arl.Calling_IsConnected()
[11:36:03] [RadarAPI]: arl.SaveSettings('C:
\Users\yyxio\AppData\Roaming\RSTD\arlgui.ini')
[11:36:09] [RadarAPI]: arl.Connect
(7,115200,1000)
[11:36:11] [RadarAPI]: Error: Connection failed:
Calling_ConnectTarget returned 3
[11:36:11] [RadarAPI]: arl.Calling_IsConnected()
[11:36:11] [RadarAPI]: arl.SaveSettings('C:
\Users\yyxio\AppData\Roaming\RSTD\arlgui.ini')
[11:42:01] [RadarAPI]: arl.SelectCaptureDevice
("DCA1000")
[11:42:02] [RadarAPI]: passed
[11:42:16] [RadarAPI]: RS232 is not connected
.....
[11:42:25] [RadarAPI]: RS232 is not connected
.....
[11:42:32] [RadarAPI]: arl.Connect
(7,115200,1000)
[11:42:34] [RadarAPI]: Error: Connection failed:
Calling_ConnectTarget returned 3
[11:42:34] [RadarAPI]: arl.Calling_IsConnected()
[11:42:34] [RadarAPI]: arl.SaveSettings('C:
\Users\yyxio\AppData\Roaming\RSTD\arlgui.ini')
```