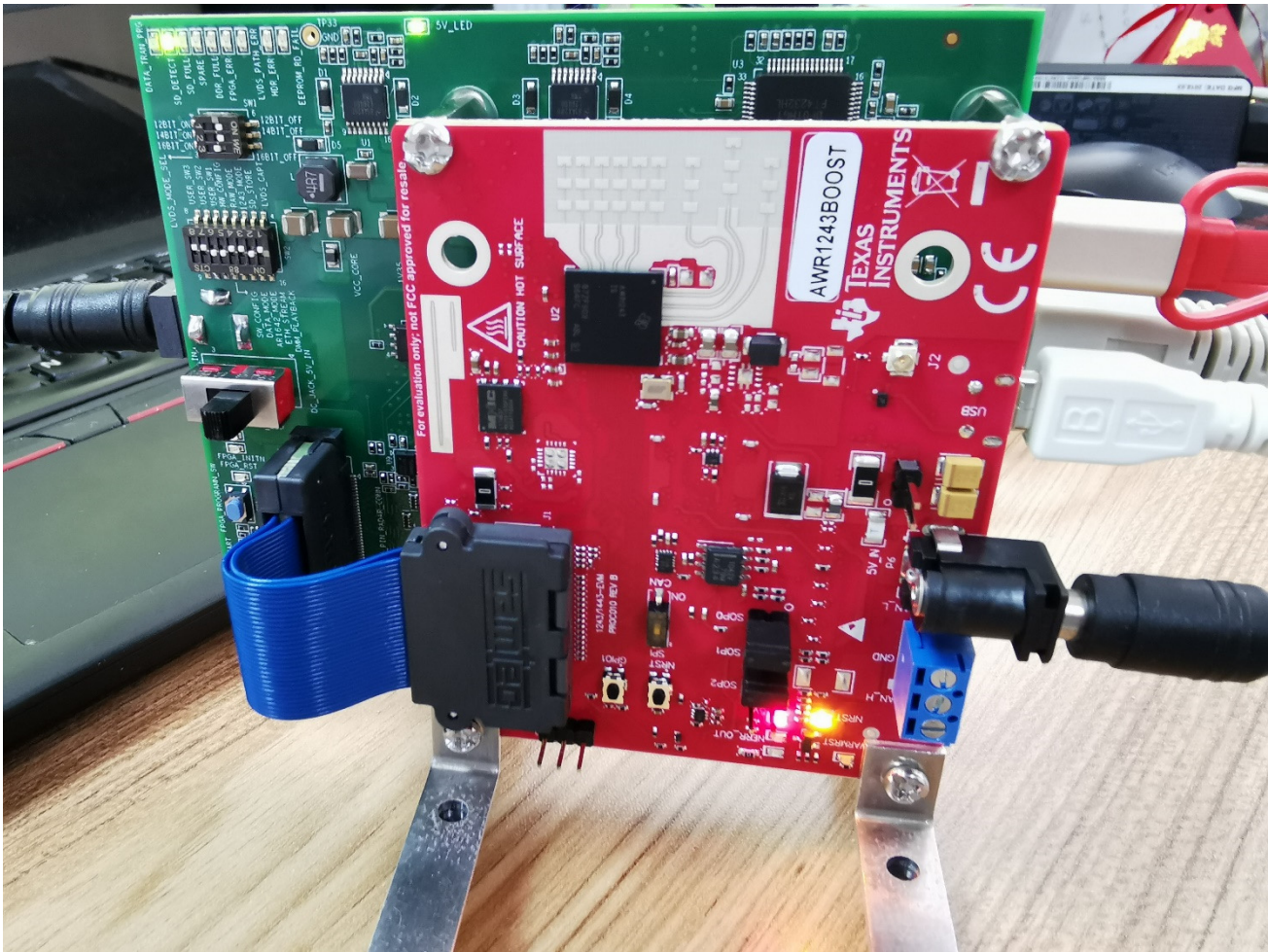


# AWR1243+DCA1000EVM problem



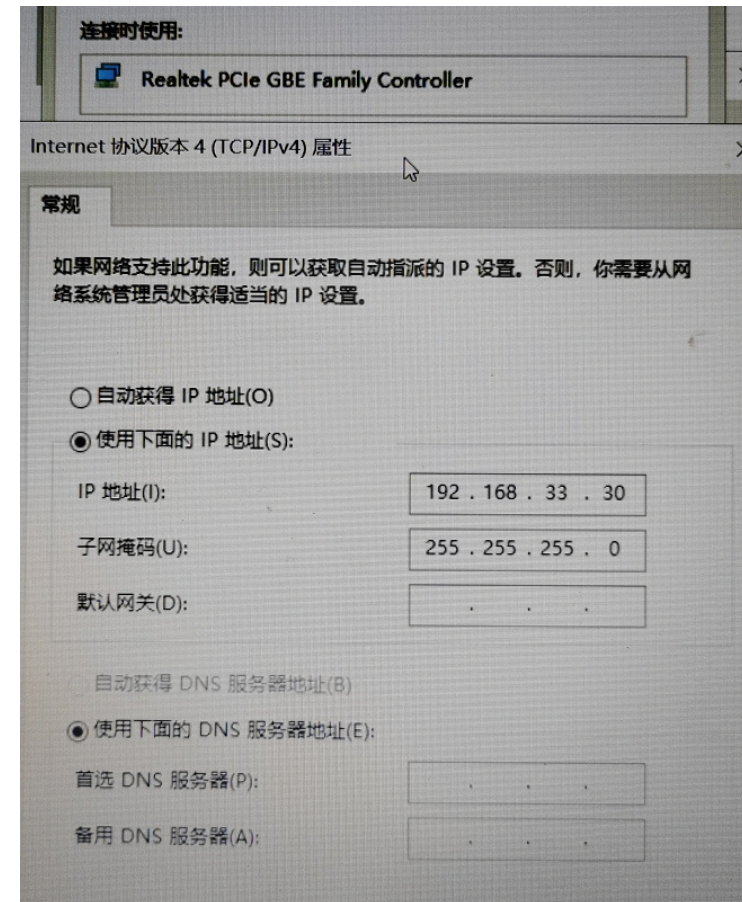
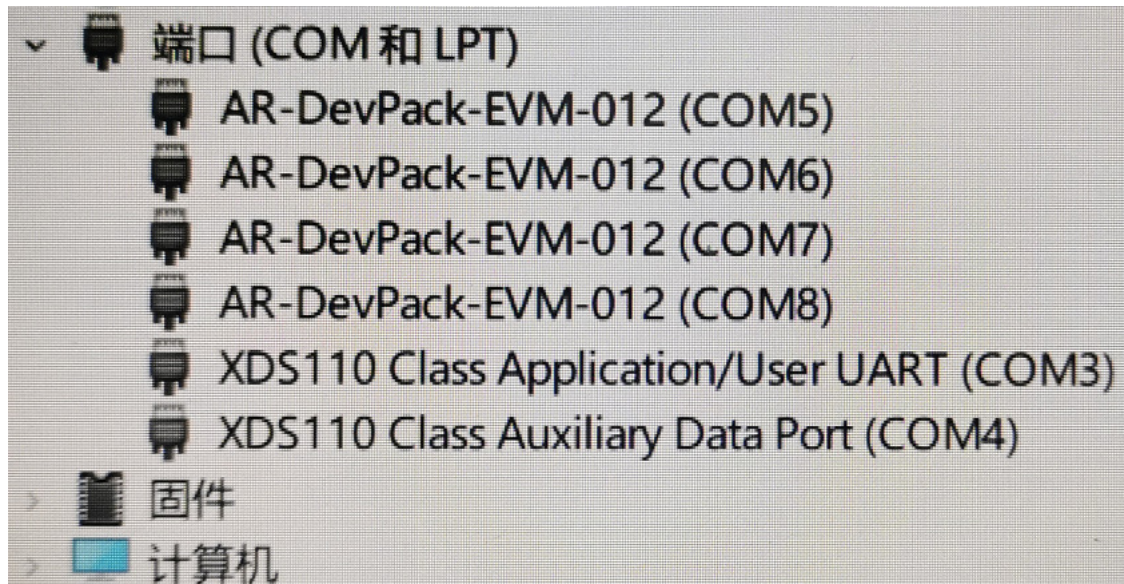


Thank you very much for your reply and instruction.

Unfortunately, the issues are not solved.

With the operations according to the standard requirements:

1. Connect the hardware to the PC (see the picture), and the software and corresponding drivers are installed correctly. See below



2. Operate the mmWave Studio 2.1.00 correctly.

First step: choose the CoM Port with COM3 and Baud Rate is set to be 921600.

Second step: Reset control and push the set button (Set (1)) (The output shows the result is ok).

Third step: **RS232 Operations and push the connect button (Connect (2)) (The output shows Error: Connection failed: calling \_connect Target returned 3)**

See the picture ( GUI of mmWave Studio 2.1 software) below for your reference.

3. I have changed three host PCs, but the connection problems are always existed. What is more, the light of ethernet is yellow.

File View Tools ToolBars Window Help

**RadarAPI**

MSSMon DynamicChirpCfg ClockOutCfg CalibDataCfg Import\_Export

Connection StaticConfig DataConfig TestSource SensorConfig IntChirpBlkCtlCfg RegOp ContStream BPMConfig AdvFrameConfig RampTimingCalculator LoopBack ExtFilterProg CalibC

**Board Control**

Reset Control

Reset

Set (1)

SOP Mode controlled via jumper on EVM

**RS232 Operations**

COM Port COM3

Baud Rate 921600

Connect (2)

No. of Devices Detected: 1

FTDI Connectivity Status: **Connected**

RS232 Connectivity Status: **Disconnected**

SPI Connectivity Status: **Disconnected**

Device Status:

Die Id:

BSS firmware version:

BSS Patch firmware ver:

MSS firmware version:

MSS Patch firmware ver:

GUI Version: **2.1.0.0**

Radar Link Version: **2.0.9.0 (31/07/19)**

Post Proc Version: **4.86**

**Operating Frequency**

☐ 60 GHz

☐ 77 GHz

**Device Variant**

☐ XWR12xx ☐ xWR6843

☐ XWR14xx ☐ xWR1843

☐ XWR16xx

**Files**

BSS FW: ... Load (3)

MSS FW: ... Load (4)

Config File: ... Load

**SPI Operations**

SPI Connect (5)

RF Power-up (6)

**Output**

Script Messages Only | Exc: Inc:

```
[17:00:24] [RadarAPI]: Closing Board Control Port ()
[17:00:24] [RadarAPI]: Status: Passed
[17:00:24] [RadarAPI]: Closing Gpio Control Port ()
[17:00:24] [RadarAPI]: Status: Passed
[17:00:24] [RadarAPI]: arl.SOPControl(2)
[17:00:24] [RadarAPI]: Status: Passed
[17:00:33] [RadarAPI]: arl.Connect(3,921600,1000)
[17:00:35] [RadarAPI]: Error: Connection failed: Calling_ConnectTarget returned 3
[17:00:35] [RadarAPI]: arl.Calling_IsConnected()
[17:00:35] [RadarAPI]: arl.SaveSettings('C:\Users\ASUS\AppData\Roaming\RSTD\arlgui.ini')
[17:01:40] [RadarAPI]: Opening Gpio Control Port ()
[17:01:40] [RadarAPI]: Status: Passed
[17:01:41] [RadarAPI]: Opening Board Control Port ()
[17:01:41] [RadarAPI]: Status: Passed
[17:01:42] [RadarAPI]: arl.FullReset()
[17:01:42] [RadarAPI]: Status: Passed
[17:01:42] [RadarAPI]: Closing Board Control Port ()
[17:01:42] [RadarAPI]: Status: Passed
[17:01:42] [RadarAPI]: Closing Gpio Control Port ()
[17:01:42] [RadarAPI]: Status: Passed
[17:01:42] [RadarAPI]: arl.SOPControl(2)
[17:01:42] [RadarAPI]: Status: Passed
[17:01:49] [RadarAPI]: arl.Connect(3,921600,1000)
[17:01:52] [RadarAPI]: Error: Connection failed: Calling_ConnectTarget returned 3
[17:01:52] [RadarAPI]: arl.Calling_IsConnected()
[17:01:52] [RadarAPI]: arl.SaveSettings('C:\Users\ASUS\AppData\Roaming\RSTD\arlgui.ini')
```

Run! Pause

TEXAS INSTRUMENTS

17:02 2019/10/28