

**Step 1** – Open up SDK **C:\ti\MMWAVE\_L\_SDK\_05\_05\_03\_00\tools\visualizer**

**Step 2** – Set EVM to flashing mode using the below switch settings from the AWRL1432BOOST-BSD EVM manual shown in figure 2-12. **OR** use the switch settings show in SDK visualizer. See below switch setting examples.

### EVM SOP switch settings from AWRL1432BOOST-BSD EVM manual

Figure 2-12 provides the different boot mode configurations to the device. The device supports application mode, QSPI flashing mode (Device management mode), and debug mode. The mode (SOP) configurations shown below in Figure 2-12 must be exercised first. After the SOP settings nRESET needs to be issued to register the SOP settings. Figure 2-12 also provides the switch position for different modes of operation supported by the device and EVM.

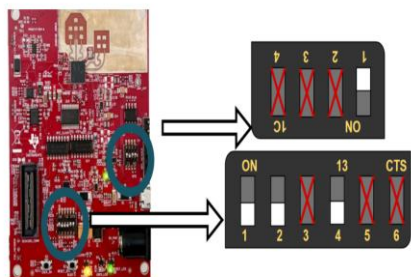
	OFF	On	Flashing	Functional	Debug Mode (w/ DCA1000)
S1.1			Off	On	On
S1.2			Off	Off	On
S1.3	LVDS	LIN_RX, XDS_UARTA/Can, NERROR_LED, WATCH_DOG_TP, RTC_CLK_IN_TP, HOST_CLK_TPA	Off	Off	Off
S1.4	XDS_RS232	DCA_LP_RS232	Off	Off	Off
S1.5	CAN	XDS_UARTA	On	On	On
S1.6	I2C, REG_MODE, LED_SW_GPIO	SPI	On	On	On
S4.1	XDS_JTAG	DCA_JTAG	Off	Off	Off
S4.2	CAN PHY: Stand by Mode Disable	CAN PHY: Stand by Mode Enable	Off	Off	Off
S4.3	LIN PHY: Enable	LIN PHY: Disable	On	On	On
S4.4	-	-	-	-	-

**Figure 2-12. SOP and MUX switches**

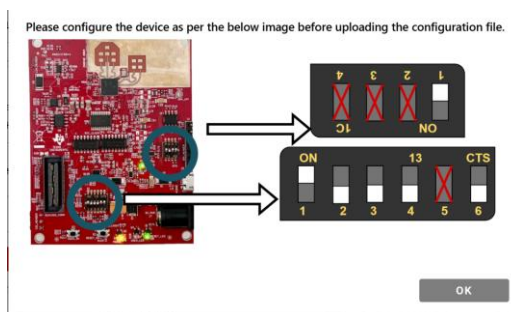
**OR**

### SDK visualizer tool SOP switch settings

FLASH



FUNCTION

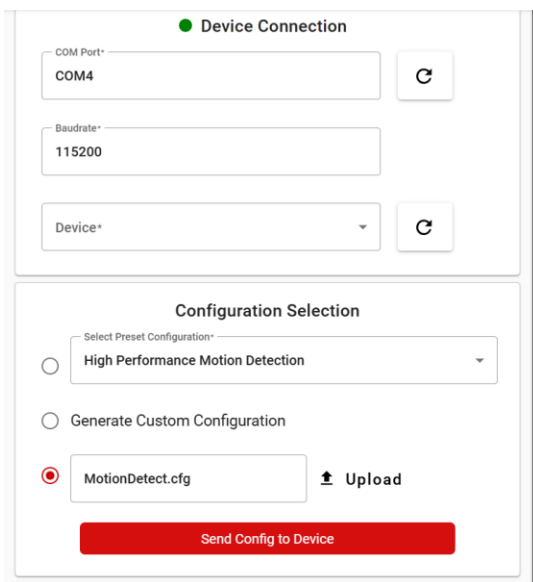


### Step 3 – Flash EVM with:

MMWAVE\_L\_SDK\_05\_05\_03\_00\examples\mmw\_demo\motion\_and\_presence\_detection\prebuilt\_binaries\xwrL14xx-evm

**Step 4 – Set EVM into “function” mode using SOP settings from fig 2-12 OR from SDK visualizer tool shown above. Press nRESET (S2).**

**Step 5 – Navigate to Configuration Dashboard in visualizer tool.**



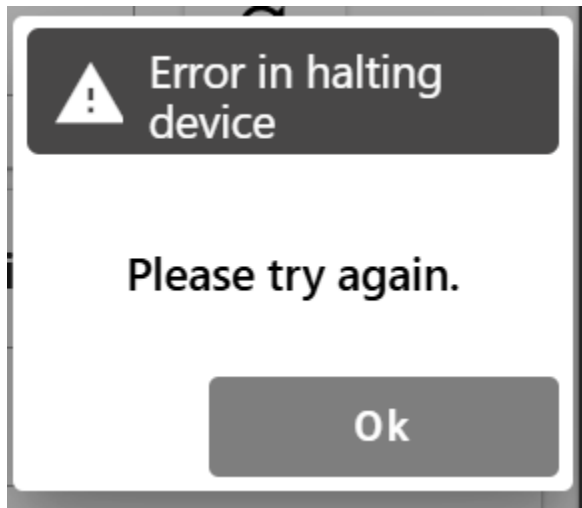
The screenshot shows a web interface for device configuration. It is divided into two main sections: 'Device Connection' and 'Configuration Selection'. In the 'Device Connection' section, there are three input fields: 'COM Port' (set to 'COM4'), 'Baudrate' (set to '115200'), and 'Device' (a dropdown menu). Each field has a refresh button (circular arrow icon) to its right. The 'Configuration Selection' section has two radio buttons: 'High Performance Motion Detection' (selected) and 'Generate Custom Configuration'. Below the radio buttons, there is a text input field containing 'MotionDetect.cfg' and an 'Upload' button with an upload icon. At the bottom of the 'Configuration Selection' section is a large red button labeled 'Send Config to Device'.

### Step 6 – Upload configuration:

MMWAVE\_L\_SDK\_05\_05\_03\_00\examples\mmw\_demo\motion\_and\_presence\_detection\profiles\xwrL14xx-evm\MotionDetect.cfg

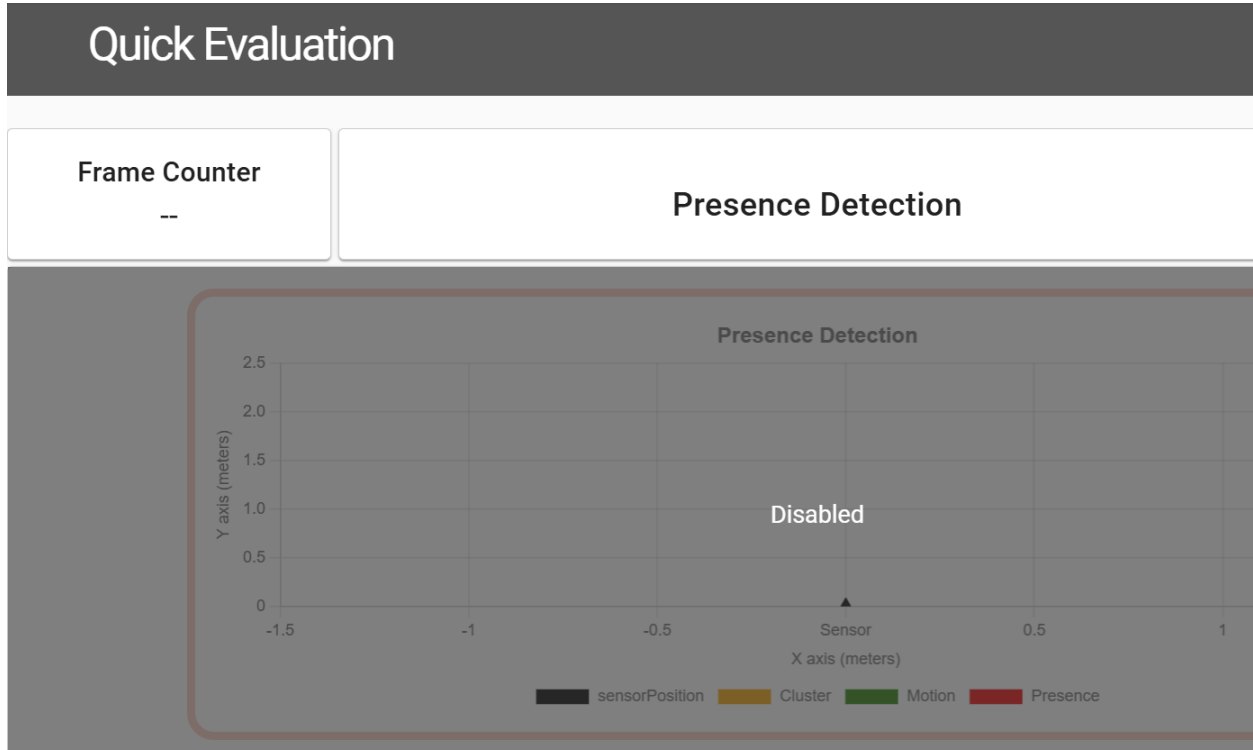
One of two problems follows – depends on which laptop I use:

**Problem 1 , laptop 1** – stuck connecting to device, and eventually times out to “error halting device”



**Problem 2, laptop 2** – Configures device, but does not acquire data

Evaluation is disabled, and plots is empty



# Plots

Frame Counter

0

Points Detected

0

Average Power

⚡ --.- mW

Plot Selection

☐ Pause

