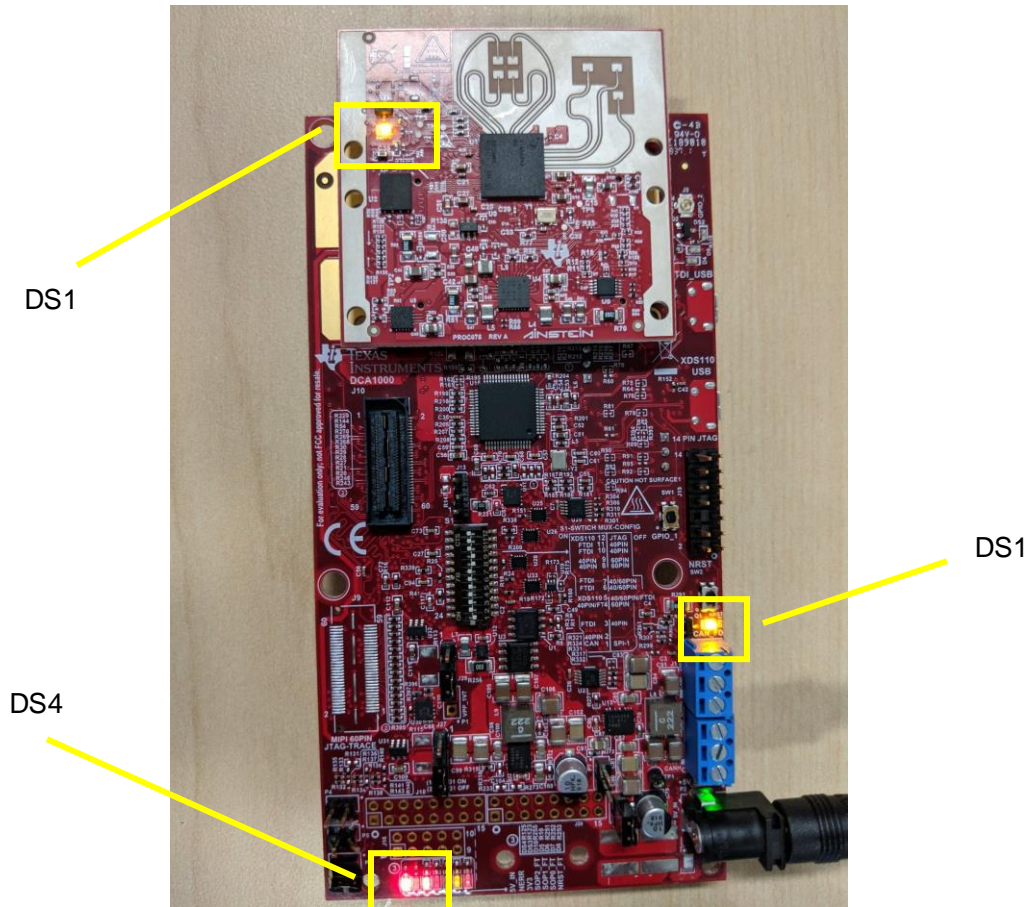


1. **PROCEDURE**

- 1.1. Mate the IWR6843ISK board to MMWAVEICBOOST with the two HD connectors. Refer the SWRU546.pdf for assembling two boards. (<http://www.ti.com/lit/pdf/SWRU546>)
- 1.2. Connect the 5V supply to the board and connect two micro USB cables from the board to the PC being used for testing.
 - 1.2.1.DS1 and DS4 LEDs (MMWAVEICBOOST) and DS1(IWR6843ISK) should turn ON



1.3. **Programming the VID & PID for FTDI chip**

- 1.3.1.Connect the micro USB cable from the board(J12) to the PC
- 1.3.2.Download the latest version of FT_prog from the utilities page of the [FTDI website](#)
- 1.3.3.Run the executable file and the screen appears as shown in Figure 1

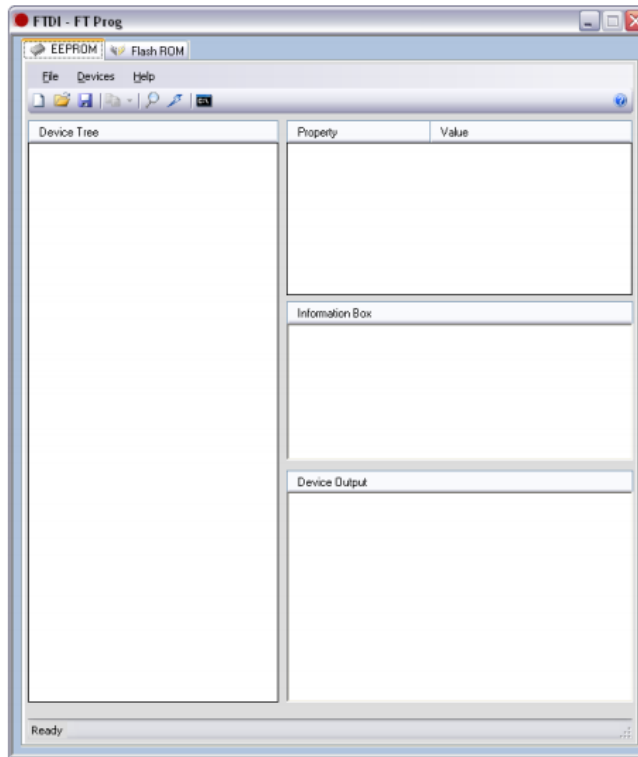


Figure 2 : FT_Prog GUI

1.3.4. Create/open the EEPROM template as shown below and select the parameters for the device as per the below image.



AR-DevPack-EVM-01
2.xml

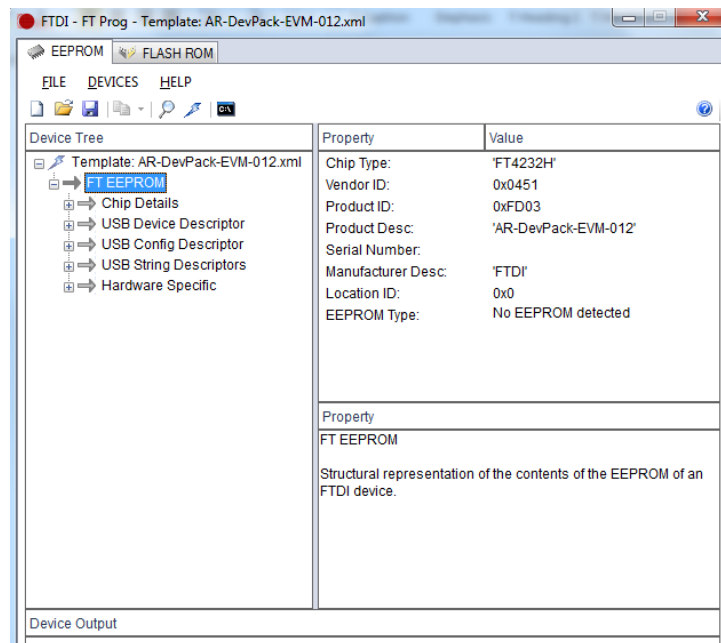


Figure 3 : EEPROM template

1.3.5. Select the device type from chip details as per the Figure 4

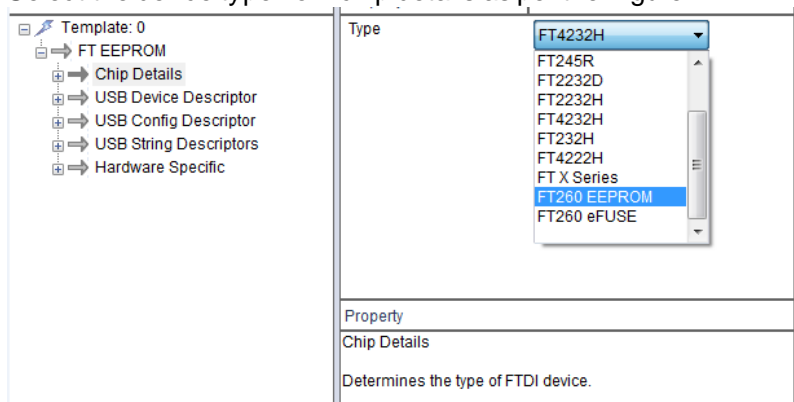


Figure 5 : Chip details

1.3.6. Enter the custom VID/PID from the USB device descriptor tab as per the Figure 6 and save the template.

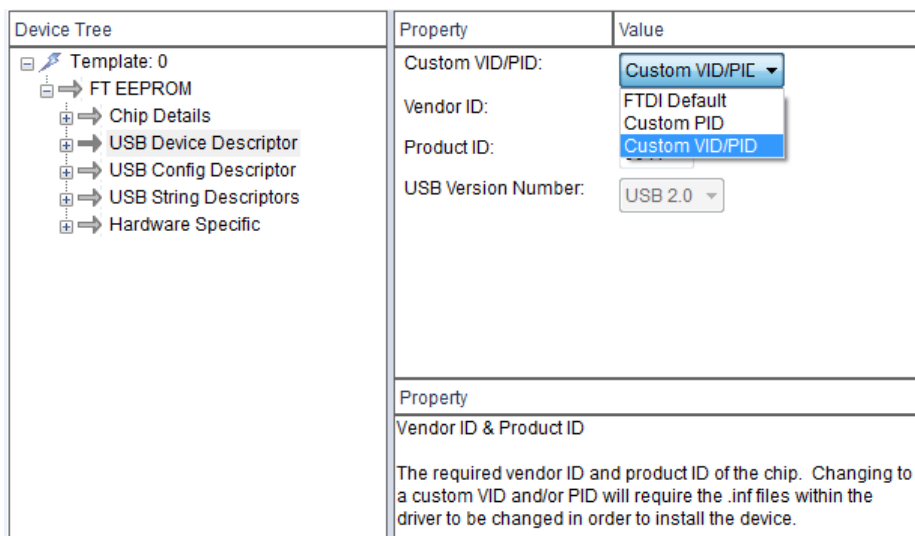


Figure 7 : Entering custom VID/PID