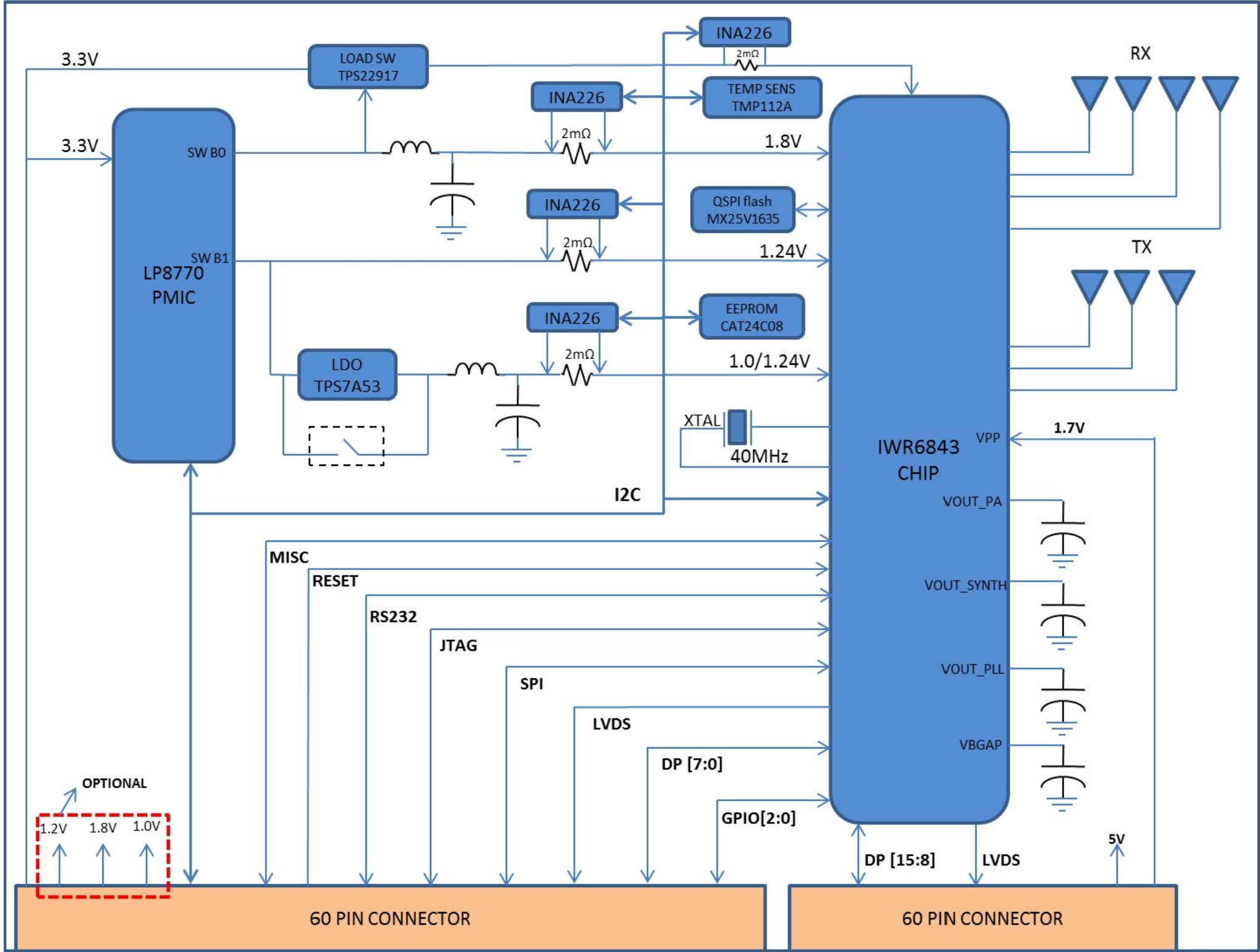


BLOCK DIAGRAM

Revision History

Rev	ECN #	Approved Date	Approved by	Notes
B	1	29/11/18	Chethan Kumar Y.B	J2 connector nets modified
B	2	29/11/18	Chethan Kumar Y.B	Moved R164 from R163.1 to R163.2



S.No	DESCRIPTION	I2C ADDRESS
1	CURRENT SENSOR 3.3V	100 0100
2	CURRENT SENSOR 1.8V	100 0000
3	CURRENT SENSOR 1.2V	100 0001
4	CURRENT SENSOR 1.0V	100 0101
5	TEMPERATURE SENSOR1	100 1011
6	LP8770 PMIC	110 0000
7	EEPROM	1010 0XX

Texas Instruments and/or its licensors do not warrant the accuracy or completeness of this specification or any information contained therein. Texas Instruments and/or its licensors do not warrant that this design will meet the specifications, will be suitable for your application or fit for any particular purpose, or will operate in an implementation. Texas Instruments and/or its licensors do not warrant that the design is production worthy. You should completely validate and test your design implementation to confirm the system functionality for your application.

Orderable: IWR6843ISK	Designed for: Public Release	Mod. Date: 11/29/2018
TID #: N/A	Project Title: IWR6843ISK(Industrial Starter Kit)	
Number: PROC073	Rev: B	Sheet Title:
SVN Rev: Not in version control	Assembly Variant: 001	Sheet: 1 of 9
Drawn By:	File: PROC073B_Block_Diagram.SchDoc	Size: B
Engineer: Chethan Kumar Y.B	Contact: http://www.ti.com/support	

1	2	3	4	5	6
A					
B					
C					
D					

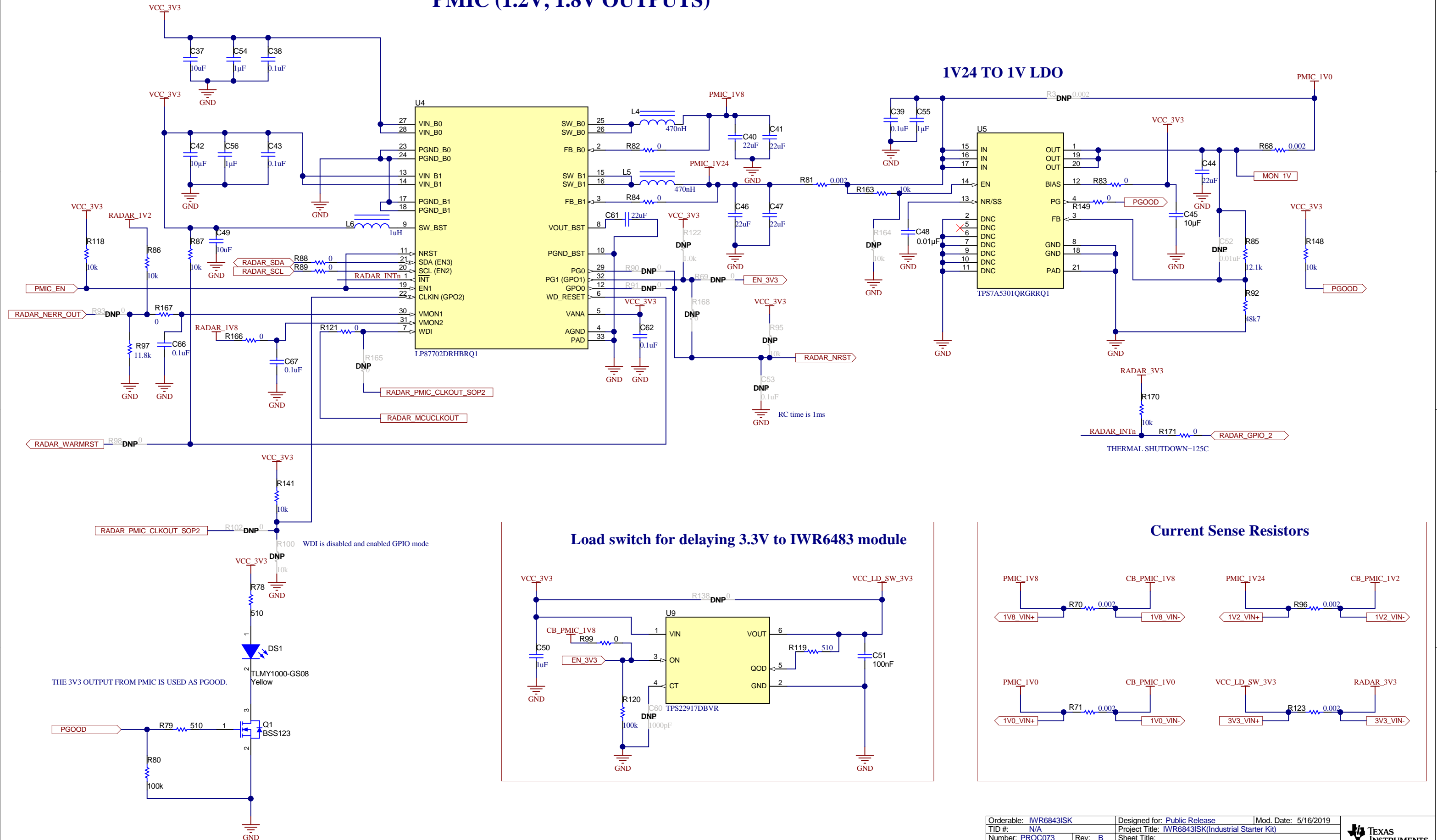
TABLE OF CONTENTS

SHEET NO.	SHEET NAME
1	Block diagram
2	Table of Contents
3	PMIC
4	IWR6843 Chip
5	Decoupling caps_LC_Filters
6	QSPI Flash
7	60Pin HD Connector
8	Temp_Current_Sensor
9	Hardware


Texas Instruments and/or its licensors do not warrant the accuracy or completeness of this specification or any information contained therein. Texas Instruments and/or its licensors do not warrant that this design will meet the specifications, will be suitable for your application or fit for any particular purpose, or will operate in an implementation. Texas Instruments and/or its licensors do not warrant that the design is production worthy. You should completely validate and test your design implementation to confirm the system functionality for your application.

Orderable: IWR6843ISK	Designed for: Public Release	Mod. Date: 10/22/2018
TID #: N/A	Project Title: IWR6843ISK(Industrial Starter Kit)	
Number: PROC073	Rev: B	Sheet Title:
SVN Rev: Not in version control	Assembly Variant: 001	Sheet: 2 of 9
Drawn By:	File: PROC073B_Table_Of_Contents.SchDoc	Size: B
Engineer: Chethan Kumar Y.B	Contact: http://www.ti.com/support	

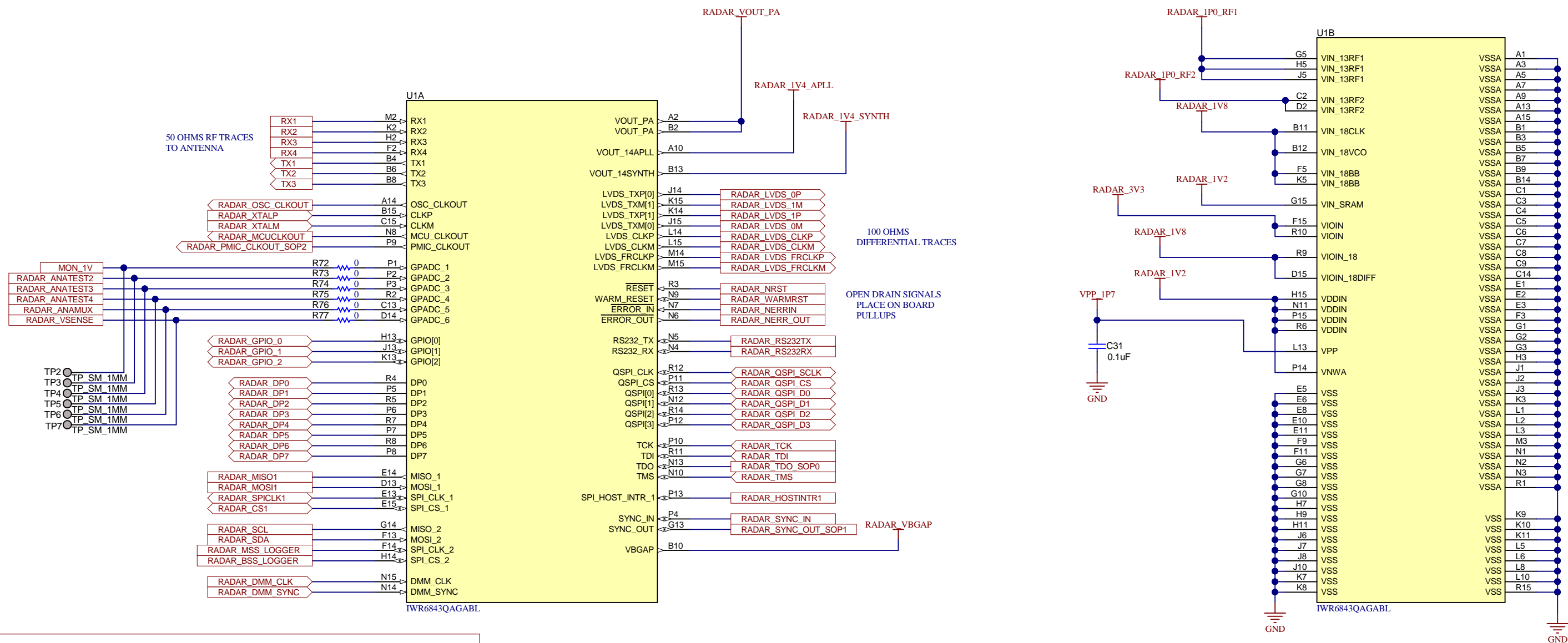
PMIC (1.2V, 1.8V OUTPUTS)



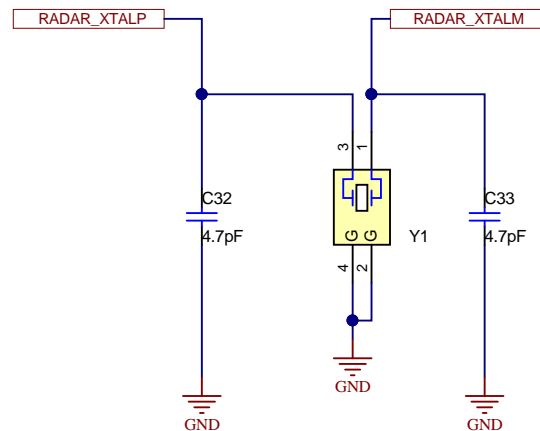
Texas Instruments and/or its licensors do not warrant the accuracy or completeness of this specification or any information contained therein. Texas Instruments and/or its licensors do not warrant that this design will meet the specifications, will be suitable for your application or fit for any particular purpose, or will operate in an implementation. Texas Instruments and/or its licensors do not warrant that the design is production worthy. You should completely validate and test your design implementation to confirm the system functionality for your application.

Orderable: IWR6843ISK	Designed for: Public Release	Mod. Date: 5/16/2019	 TEXAS INSTRUMENTS http://www.ti.com © Texas Instruments 2018
TID #: N/A	Project Title: IWR6843ISK(Industrial Starter Kit)		
Number: PROC073	Rev: B	Sheet Title:	
SVN Rev: Not in version control	Assembly Variant: 001	Sheet: 3 of 9	
Drawn By:	File: PROC073B_PMIC.SchDoc	Size: B	
Engineer: Chethan Kumar Y.B	Contact: http://www.ti.com/support		

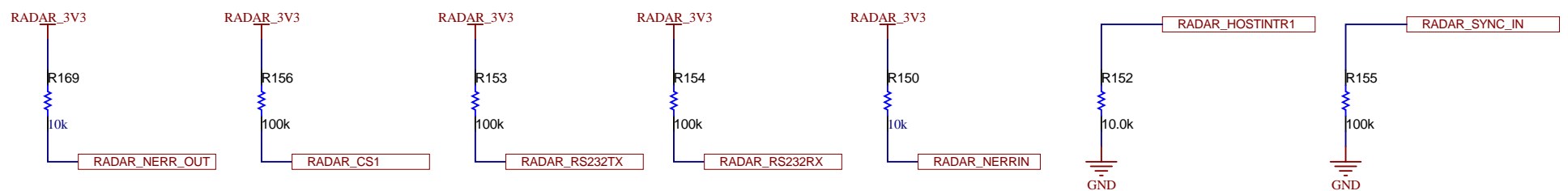
IWR6843 Chip



Crystal Oscillator 40MHz



PULL UPs/DOWNs FOR SPI CS1, NERRIN, RS232, SYNC_IN & HOST_INTn



Orderable: IWR6843ISK	Designed for: Public Release	Mod. Date: 5/16/2019	 TEXAS INSTRUMENTS http://www.ti.com © Texas Instruments 2018
TID #: N/A	Project Title: IWR6843ISK(Industrial Starter Kit)		
Number: PROC073	Rev: B	Sheet Title:	
SVN Rev: Not in version control	Assembly Variant: 001	Sheet: 4 of 9	
Drawn By:	File: PROC073B_IWR6843_Chip.SchDoc	Size: B	
Engineer: Chethan Kumar Y.B	Contact: http://www.ti.com/support		

Texas Instruments and/or its licensors do not warrant the accuracy or completeness of this specification or any information contained therein. Texas Instruments and/or its licensors do not warrant that this design will meet the specifications, will be suitable for your application or fit for any particular purpose, or will operate in an implementation. Texas Instruments and/or its licensors do not warrant that the design is production worthy. You should completely validate and test your design implementation to confirm the system functionality for your application.

A

B

C

D

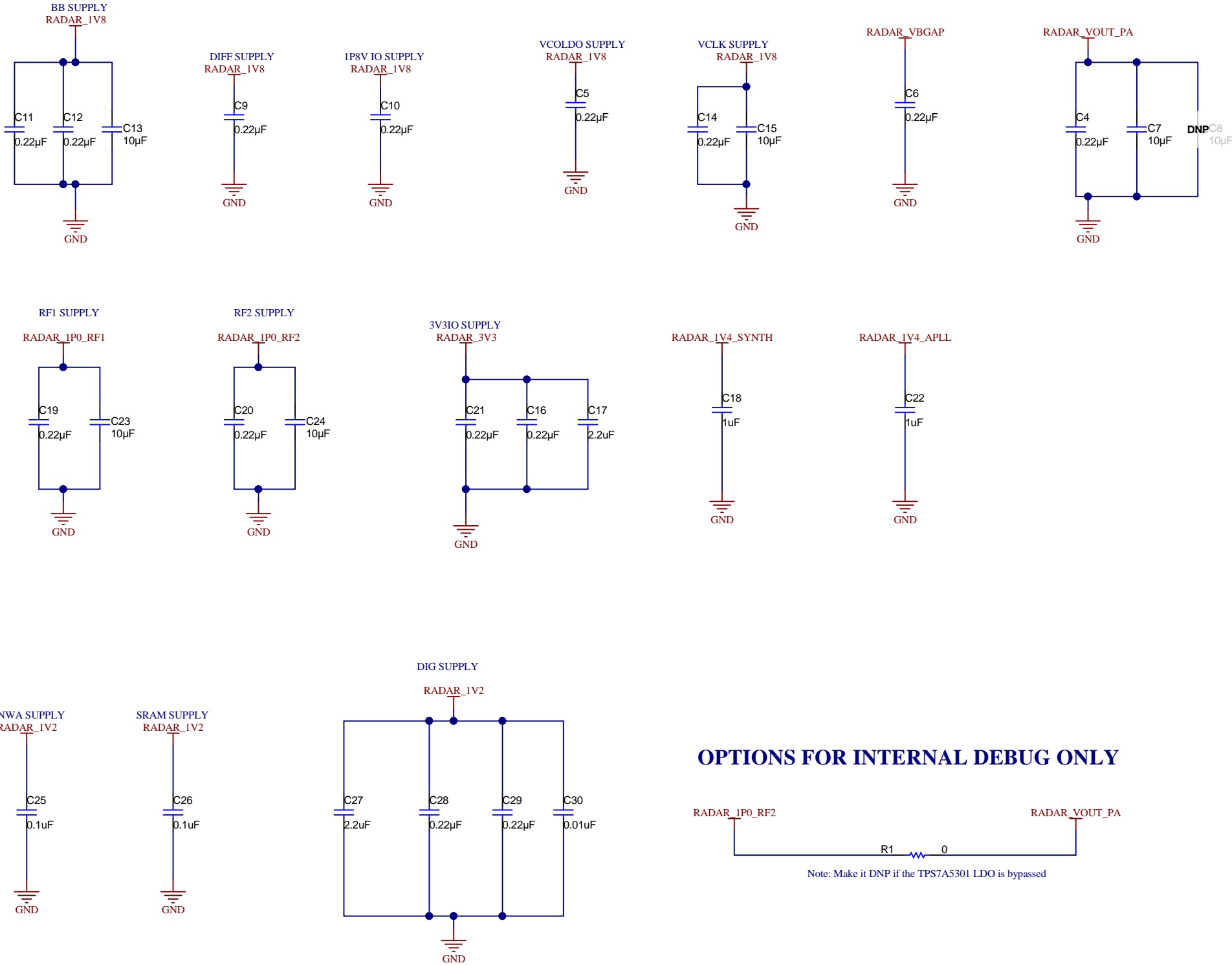
A

B

C

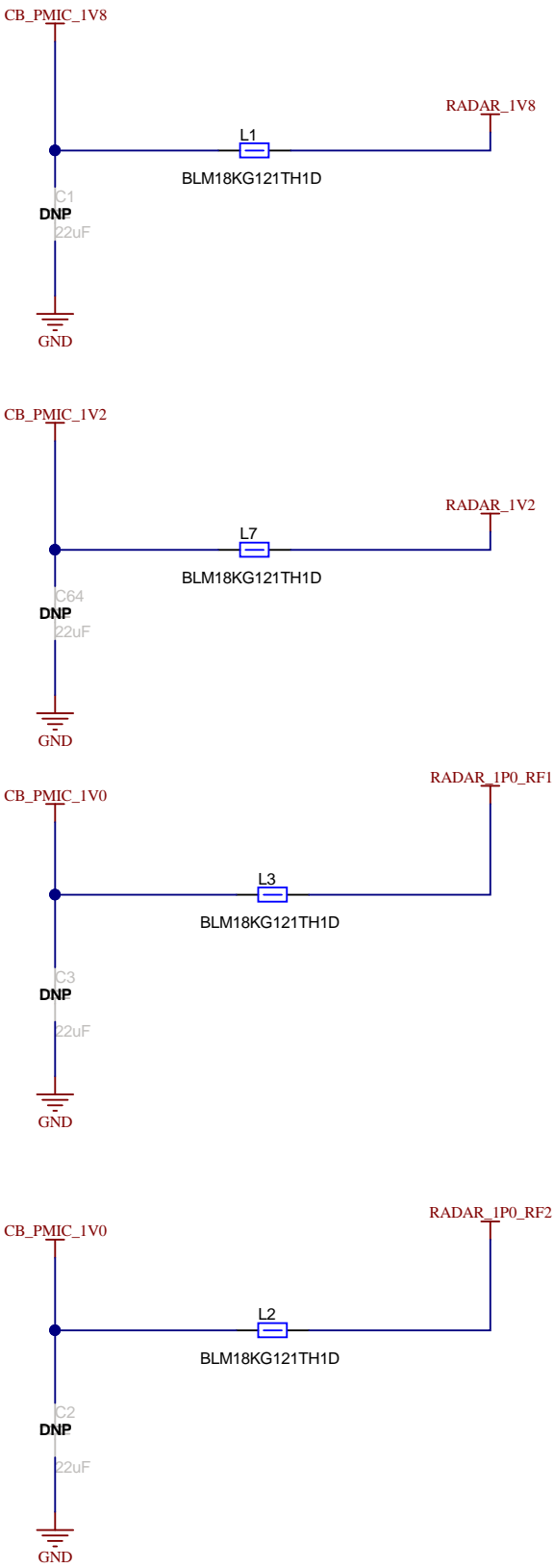
D

SUPPLY_DECOUPLING_CAPS



OPTIONS FOR INTERNAL DEBUG ONLY

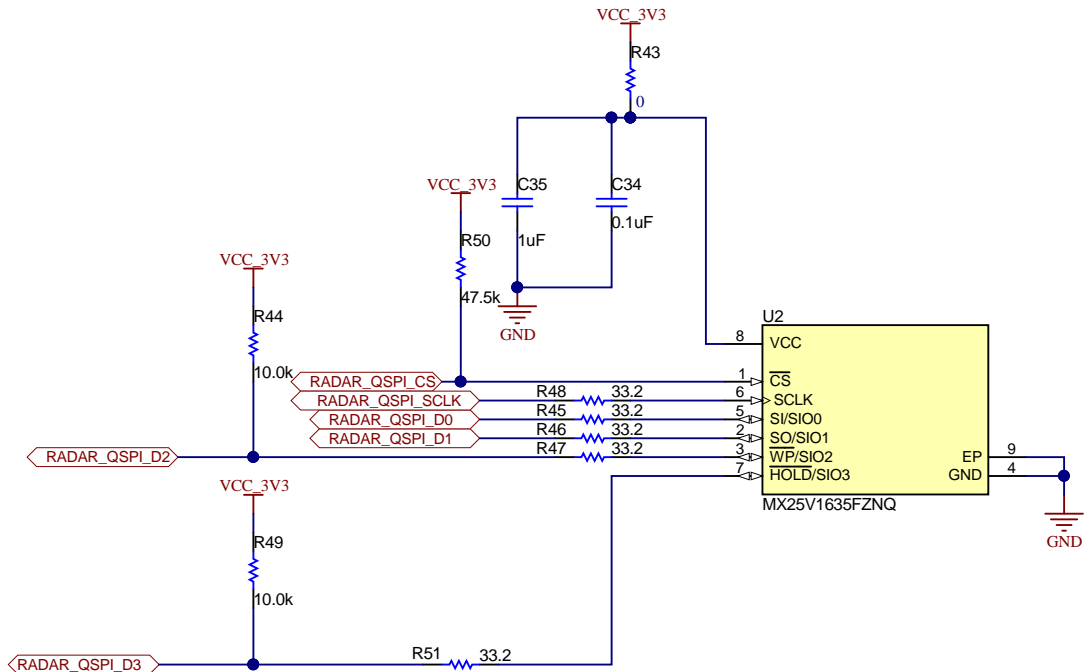
PMIC LC Filters



Texas Instruments and/or its licensors do not warrant the accuracy or completeness of this specification or any information contained therein. Texas Instruments and/or its licensors do not warrant that this design will meet the specifications, will be suitable for your application or fit for any particular purpose, or will operate in an implementation. Texas Instruments and/or its licensors do not warrant that the design is production worthy. You should completely validate and test your design implementation to confirm the system functionality for your application.

Orderable: IWR6843ISK	Designed for: Public Release	Mod. Date: 5/16/2019
TID #: N/A	Project Title: IWR6843ISK(Industrial Starter Kit)	
Number: PROC073	Rev: B	Sheet Title:
SVN Rev: Not in version control	Assembly Variant: 001	Sheet: 5 of 9
Drawn By:	File: PROC073B_Decoupling_caps.SchDoc	Size: B
Engineer: Chethan Kumar Y.B	Contact: http://www.ti.com/support	

QSPI FLASH

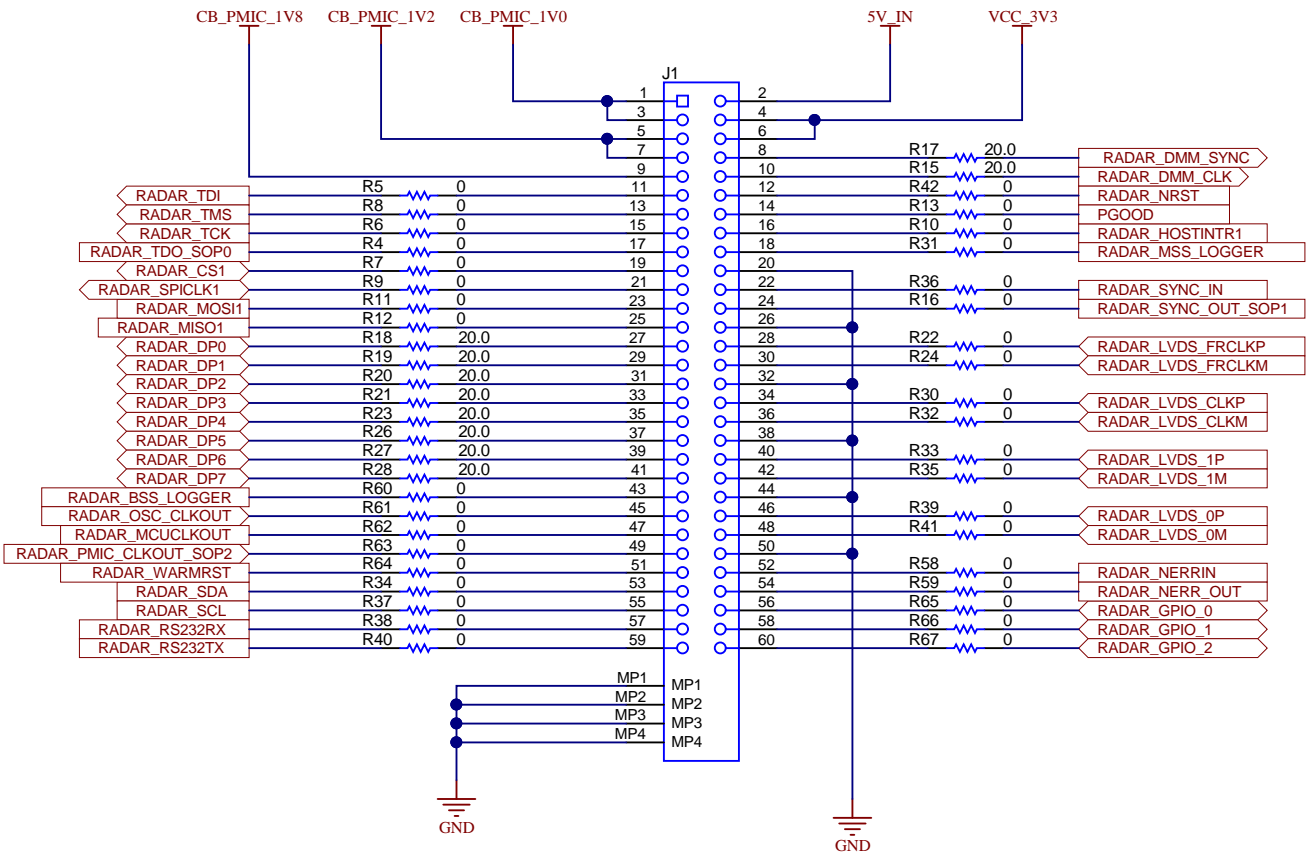


Texas Instruments and/or its licensors do not warrant the accuracy or completeness of this specification or any information contained therein. Texas Instruments and/or its licensors do not warrant that this design will meet the specifications, will be suitable for your application or fit for any particular purpose, or will operate in an implementation. Texas Instruments and/or its licensors do not warrant that the design is production worthy. You should completely validate and test your design implementation to confirm the system functionality for your application.

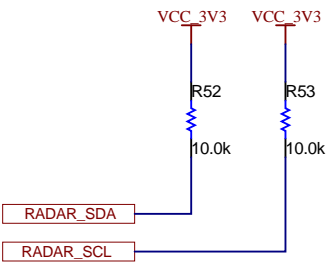
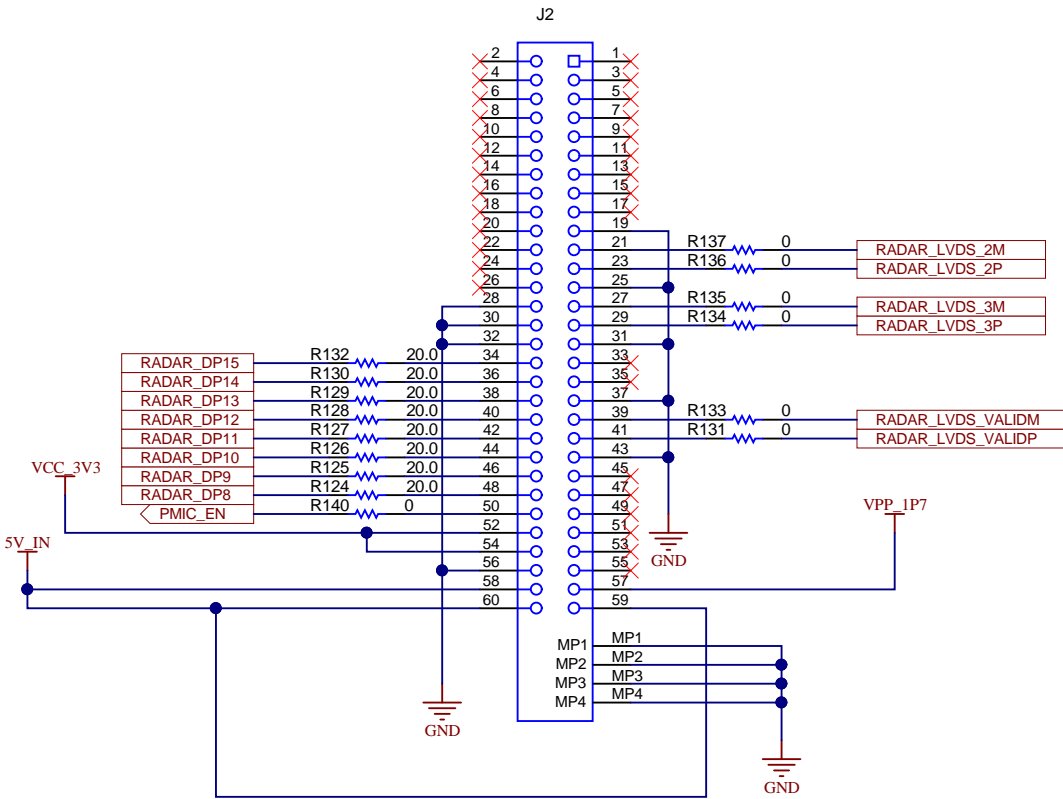
Orderable: IWR6843ISK	Designed for: Public Release	Mod. Date: 5/16/2019
TID #: N/A	Project Title: IWR6843ISK(Industrial Starter Kit)	
Number: PROC073	Rev: B	Sheet Title:
SVN Rev: Not in version control	Assembly Variant: 001	Sheet: 6 of 9
Drawn By:	File: PROC073B_QSPI_Flash_section.SchDoc	Size: B
Engineer: Chethan Kumar Y.B	Contact: http://www.ti.com/support	

CONNECTORS

60 PIN HD CONNECTOR



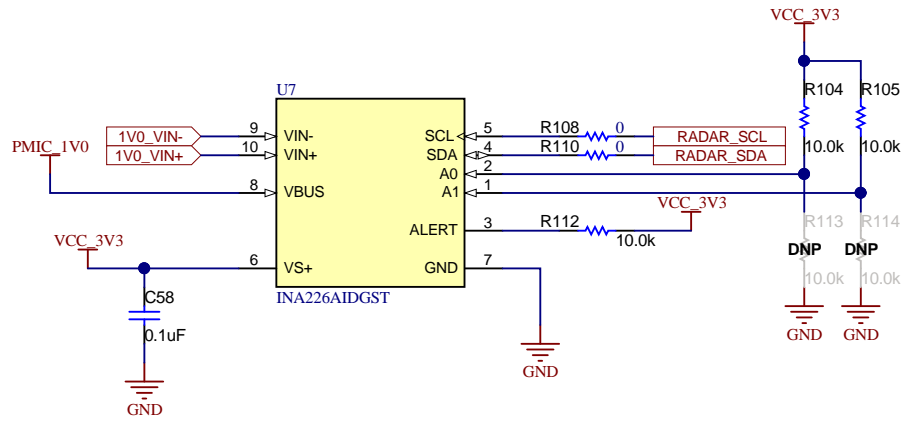
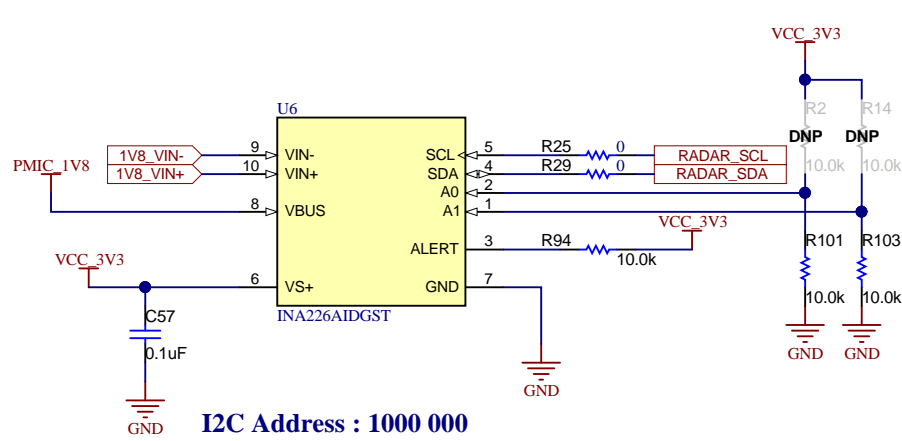
60 PIN HD CONNECTOR FOR xWRxxxx DEVICES COMPATABILITY



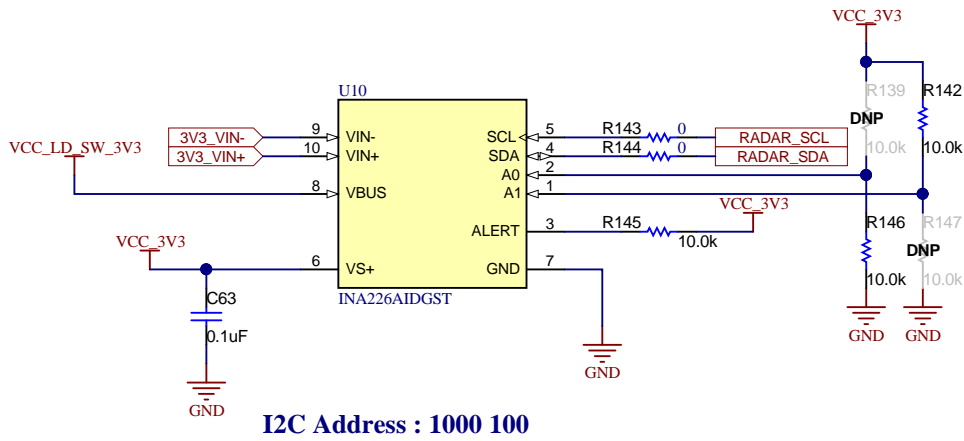
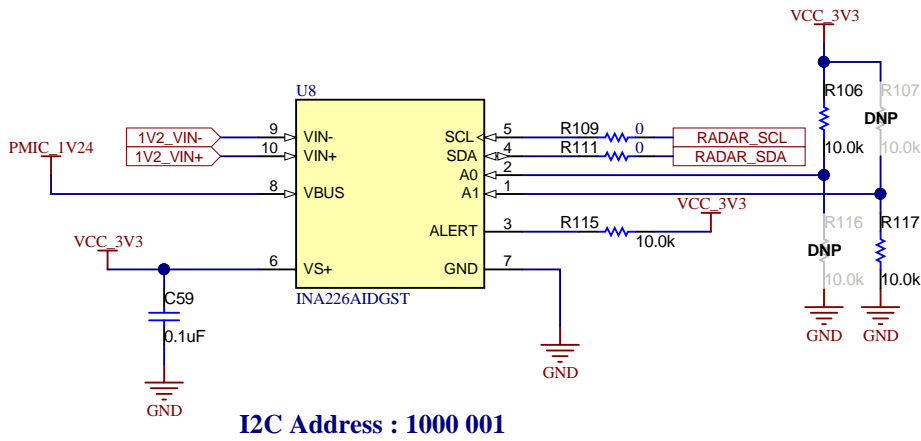
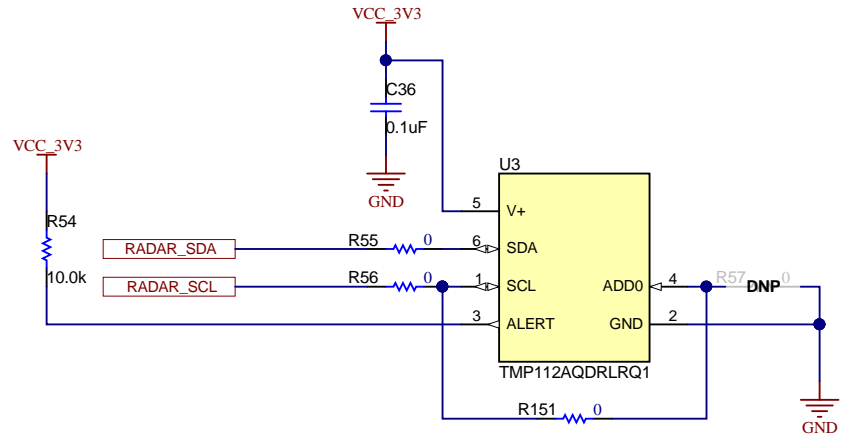
Texas Instruments and/or its licensors do not warrant the accuracy or completeness of this specification or any information contained therein. Texas Instruments and/or its licensors do not warrant that this design will meet the specifications, will be suitable for your application or fit for any particular purpose, or will operate in an implementation. Texas Instruments and/or its licensors do not warrant that the design is production worthy. You should completely validate and test your design implementation to confirm the system functionality for your application.

Orderable: IWR6843ISK	Designed for: Public Release	Mod. Date: 11/9/2018
TID #: N/A	Project Title: IWR6843ISK(Industrial Starter Kit)	
Number: PROC073	Rev: B	Sheet Title:
SVN Rev: Not in version control	Assembly Variant: 001	Sheet: 7 of 9
Drawn By:	File: PROC073B_HD_Connector_60Pin.SchDoc	Size: B
Engineer: Chethan Kumar Y.B	Contact: http://www.ti.com/support	

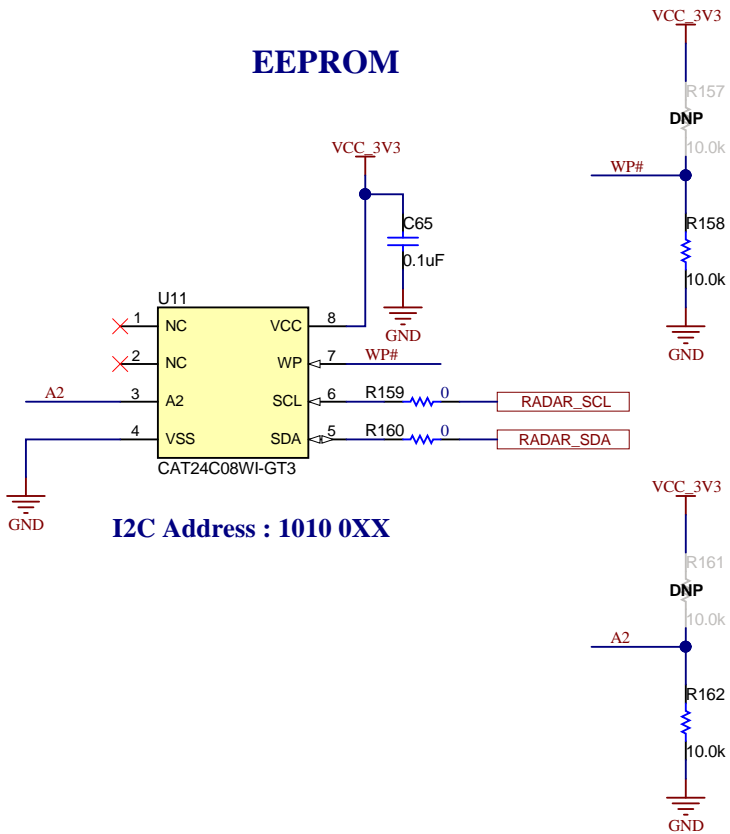
CURRENT SENSOR



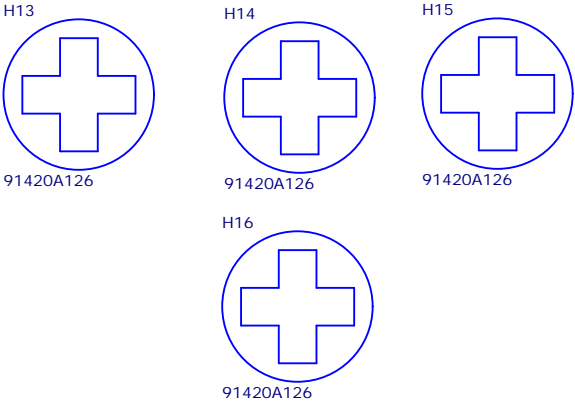
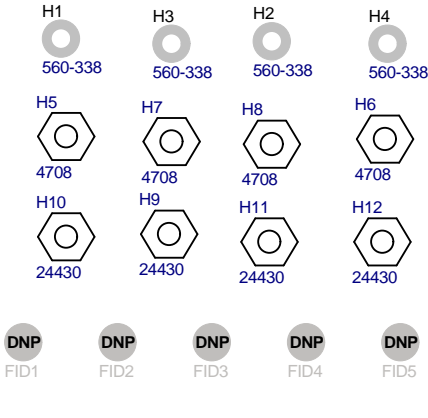
TEMPERATURE SENSOR



EEPROM



Texas Instruments and/or its licensors do not warrant the accuracy or completeness of this specification or any information contained therein. Texas Instruments and/or its licensors do not warrant that this design will meet the specifications, will be suitable for your application or fit for any particular purpose, or will operate in an implementation. Texas Instruments and/or its licensors do not warrant that the design is production worthy. You should completely validate and test your design implementation to confirm the system functionality for your application.



PCB Number: PROC073

PCB Rev: B

PCB

LOGO

Texas Instruments



PCB

LOGO

FCC disclaimer

PCB

LOGO

WEEE logo

PCB

LOGO

Texas Instruments

CAUTION HOT SURFACE1



CAUTION HOT SURFACE

Variant/Label Table	
Variant	Label Text
001	IWR6843ISK

LBL1

PCB Label

THT-14-423-10
Size: 0.65" x 0.20 "

ZZ1

Label Assembly Note

This Assembly Note is for PCB labels only

ZZ2

Assembly Note

These assemblies are ESD sensitive, ESD precautions shall be observed.

ZZ3

Assembly Note

These assemblies must be clean and free from flux and all contaminants. Use of no clean flux is not acceptable.

ZZ4

Assembly Note

These assemblies must comply with workmanship standards IPC-A-610 Class 2, unless otherwise specified.

Texas Instruments and/or its licensors do not warrant the accuracy or completeness of this specification or any information contained therein. Texas Instruments and/or its licensors do not warrant that this design will meet the specifications, will be suitable for your application or fit for any particular purpose, or will operate in an implementation. Texas Instruments and/or its licensors do not warrant that the design is production worthy. You should completely validate and test your design implementation to confirm the system functionality for your application.

Orderable: IWR6843ISK	Designed for: Public Release	Mod. Date: 6/13/2019
TID #: N/A	Project Title: IWR6843ISK(Industrial Starter Kit)	
Number: PROC073	Rev: B	Sheet Title:
SVN Rev: Not in version control	Assembly Variant: 001	Sheet: 9 of 9
Drawn By:	File: PROC073B_EVM_Hardware.SchDoc	Size: B
Engineer: Chethan Kumar Y.B	Contact: http://www.ti.com/support	