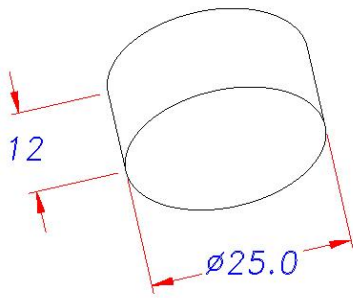


## KQ112KH



### Features:

- 1) Rugged sealed construction
- 2) Cylindrical design allows for installation in various applications

### Specifications

Best Operating Frequency : 112kHz+/- 4%

Min. Transmit Sensitivity: 107dB re 1  $\mu$ Pa/V at 1m  
at best transmit frequency

Min. Receive Sensitivity:-170 dB re 1V/ $\mu$ Pa  
at best receive frequency

Min. Parallel Resistance: 420 $\Omega$  +/- 30%

Minimum sensor range: 15cm\*

Maximum sensor range: 7m\*

Free(1kHz) Capacitance:1000pF +/- 200pF

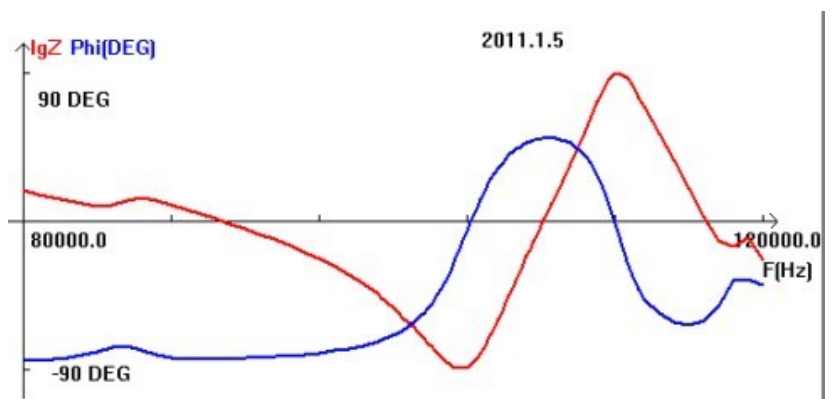
Beam width (-3dB full angle): 12° +/- 2°

Maximum Driving Voltage:800Vpp  
(2% duty cycle tone burst)

Operating Temperature:-20° C to 70°C

Waterproof standard: IP65

Weight: 14g



### Materials:

Housing: Glass filled polyester

Acoustic Window: Glass reinforced epoxy

All specifications typical at 22° C and subject  
to change without notice.

\*Pulse-Echo Mode

Actual range may vary , depending on drive

Circuitry and signal processing

### Applications:

- . level measurement
  - . Automation control
  - . Proximity
  - . Obstacle avoidance
  - . Robotics
-