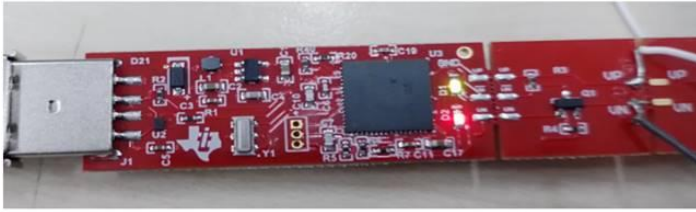
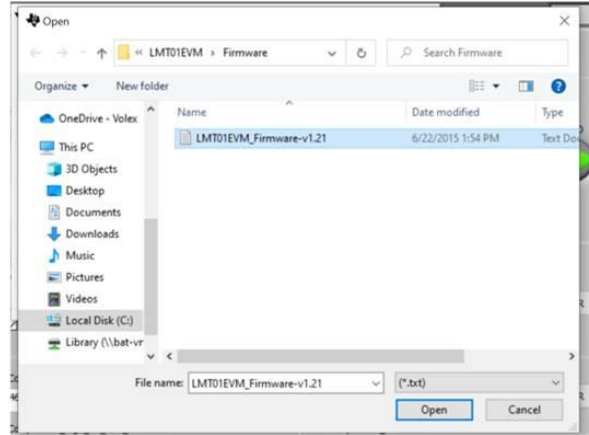
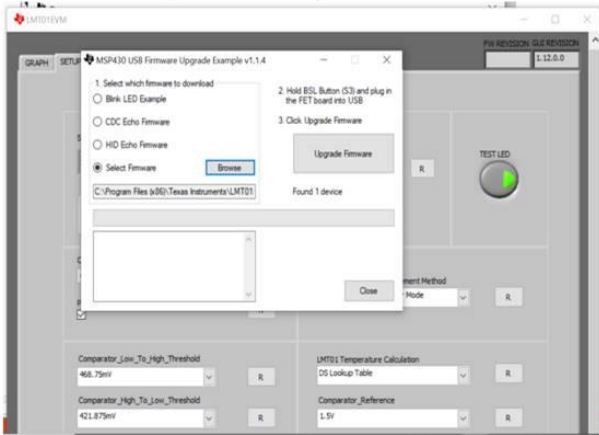


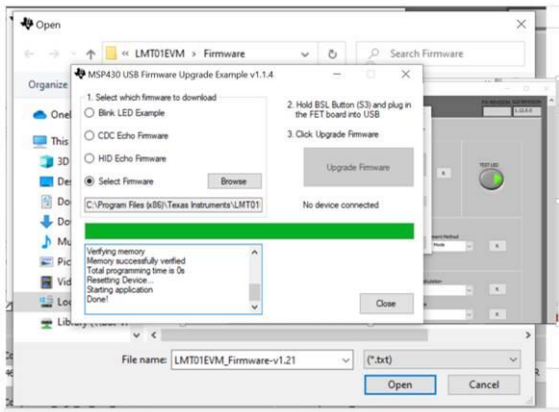
1. After short both component R40 & C6 (LED already ON)



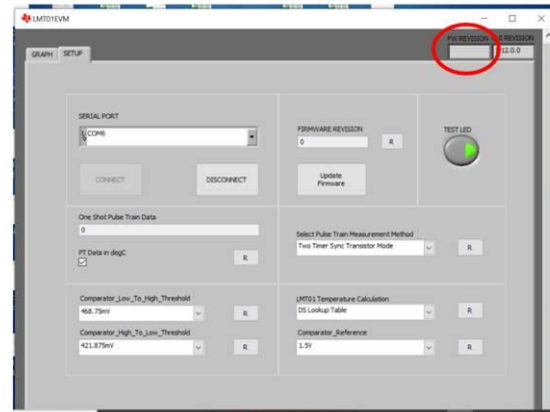
2. Select Firmware (Firmware V1.21)



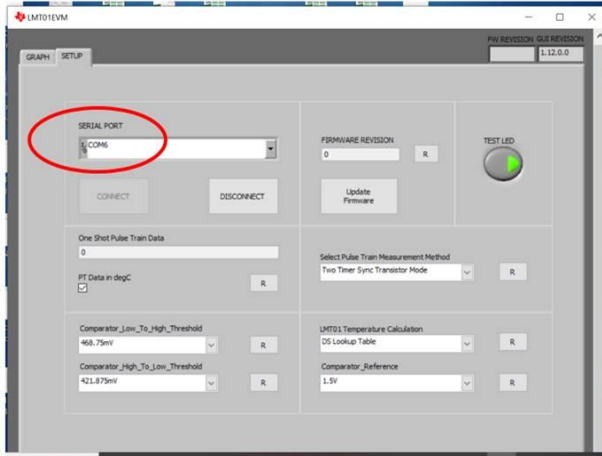
3. Upgrade Firmware



4. Disconnect and re-connect the EVM Board (no FW version available on the screen)



5. Chose Serial Port (COM6 and click connect)



6. Click Start Graph (show " Reading Plot data successful" on the monitor but the firmware not available on the monitor)

