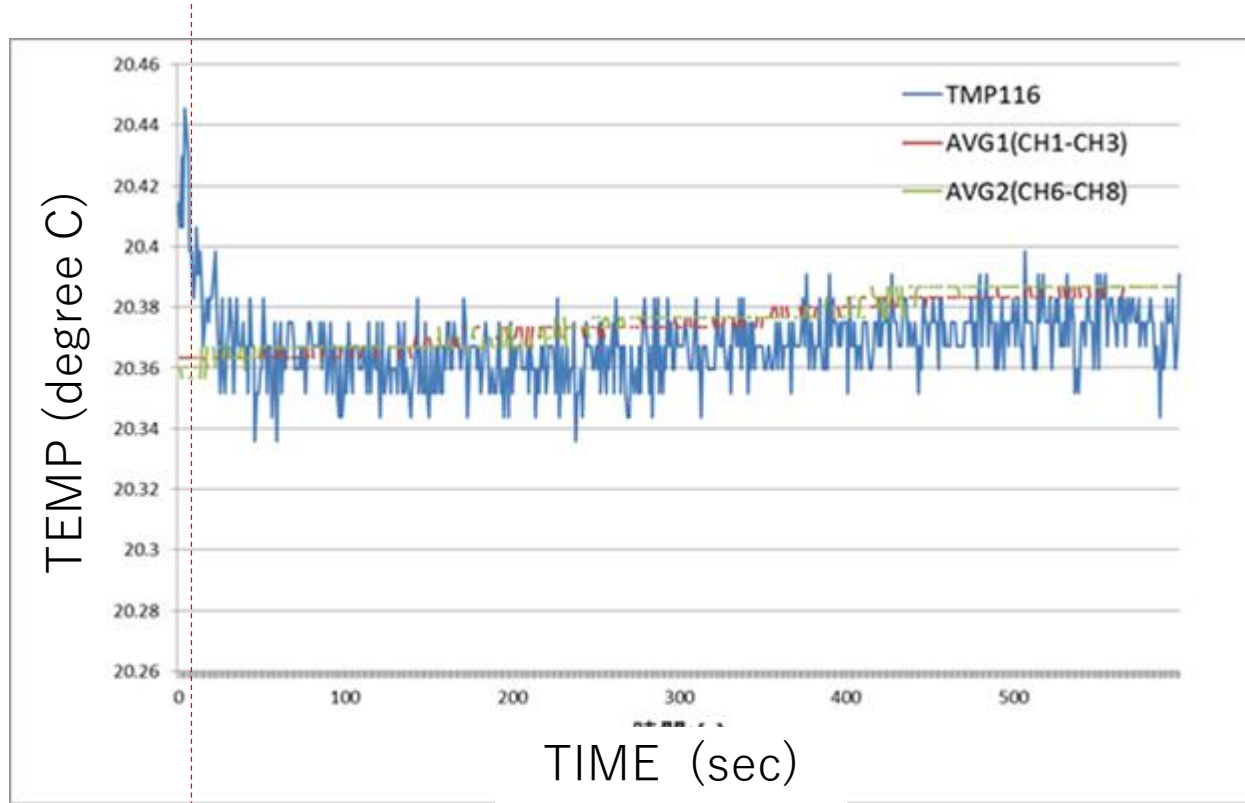


TMP116 GUI measurement data



This is a excel data made by our customer using measurement data taken by TMP116 EVM

Blue color curve is taken data by TMP116 EVM. AVG1 and 2 are high accuracy thermometer. TMP116 measurement data is almost same as high accuracy thermometer data.

Could you please give me your answer to the following questions?

Q1. Why TMP116 temperature data went down when conversion mode was changed from continuous mode to one shot mode?

Is the reason TMP116 self heating is reduced?

Q2. When DEMO MODE check-box is checked (Activated), is TMP116 data reading continued? Is the temperature data plotting on GUI continued?

Or is the plotting suspended when DEMO MODE check-box is checked?

Q3, When GUI is started up, which conversion mode is selected, continuous mode or one shot mode?

The customer changed conversion mode on GUI from Continuous to One shot mode at this timing. Also they checked DEMO MODE check-Box located top right on GUI.