

STEPS TO INSTALL AND OPERATE EVM TDC1000-C2000 GUI (VERSION 1.2.0.83)

- Visit the link : <http://www.ti.com/tool/TDC1000-C2000EVM?keyMatch=TDC1000-C2000&tisearch=Search-EN-everything&usecase=part-number>
- Click the GUI which is available under the section Software (Refer **Figure 1**) and it will redirect you to login page (Refer **Figure 2**)
- Enter your details to download GUI.

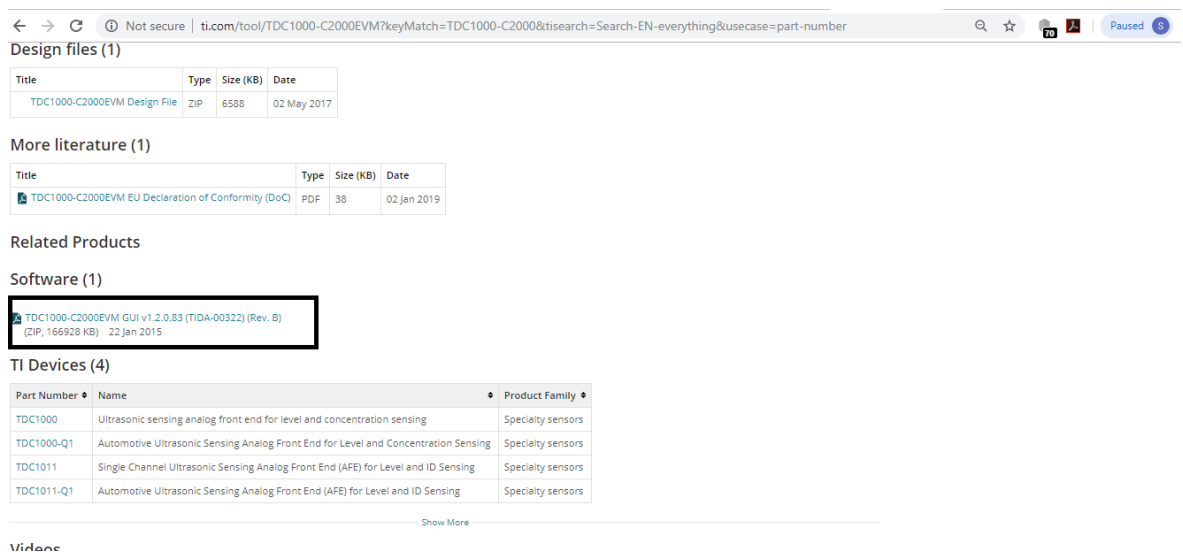


Figure 1

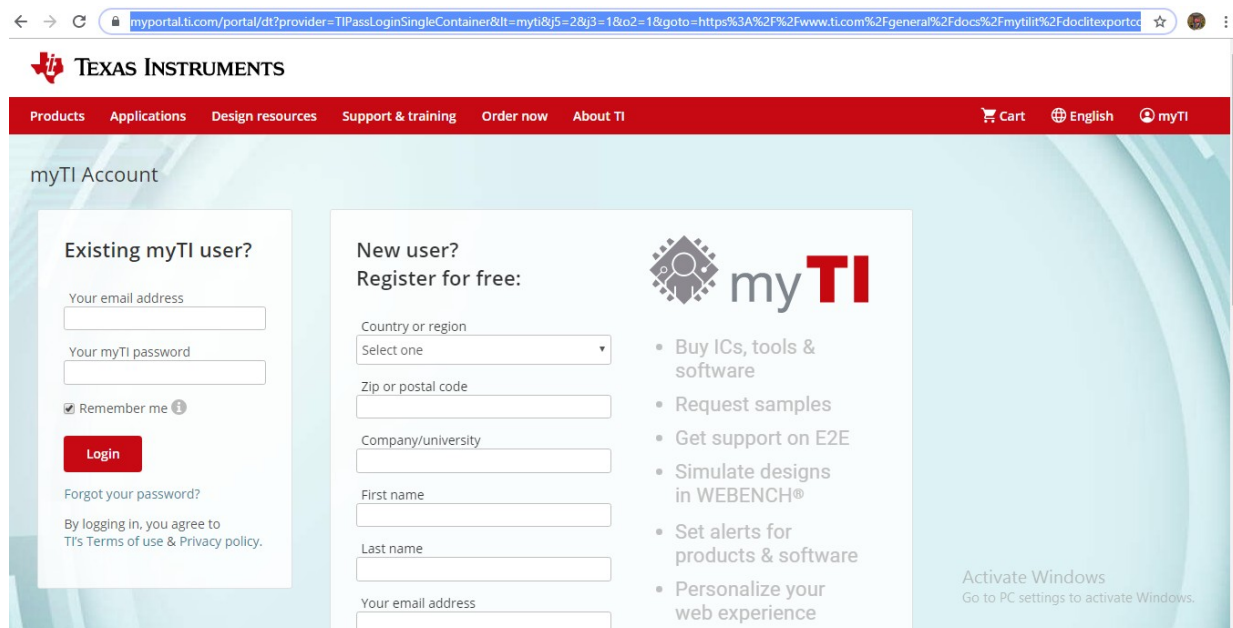


Figure 2

- Visit the link <http://www.ti.com/product/TUSB3410/toolssoftware> to download UART Driver (Refer **Figure 3**)

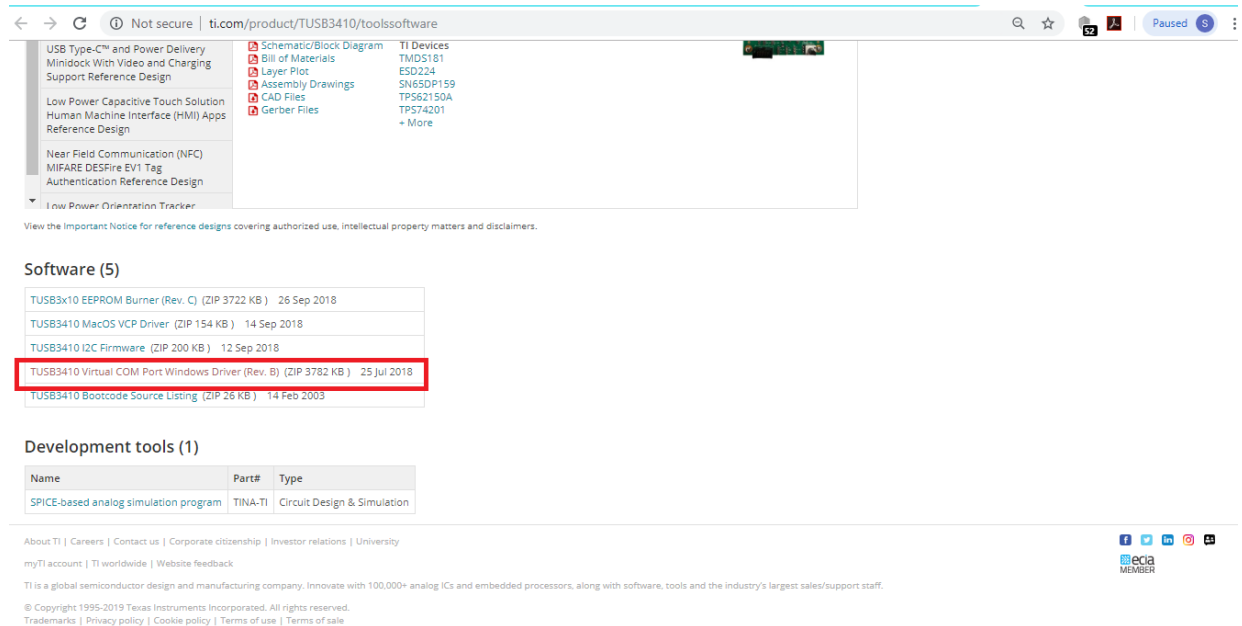


Figure 3

- Follow the steps given in the pages 7-13 of TDC1000-C2000 EVM Users Guide (sniu023.pdf) for transducer connection and operation of GUI.
- For **Mode 2** operation, connect one of the wires of **Transducer 1** (*Red color* referring to Audiowell transducer T/R975-US0014L353-01) at TX1 and the other wire (*White color*) should go to any one of the ground pins in the second row of the header J5.
- Connect the Red wire of the **Transducer 2** at RX1 and the other wire (*White color*) should go to any one of the ground pins in the second row of the header J5 (Refer **Figure 4**).

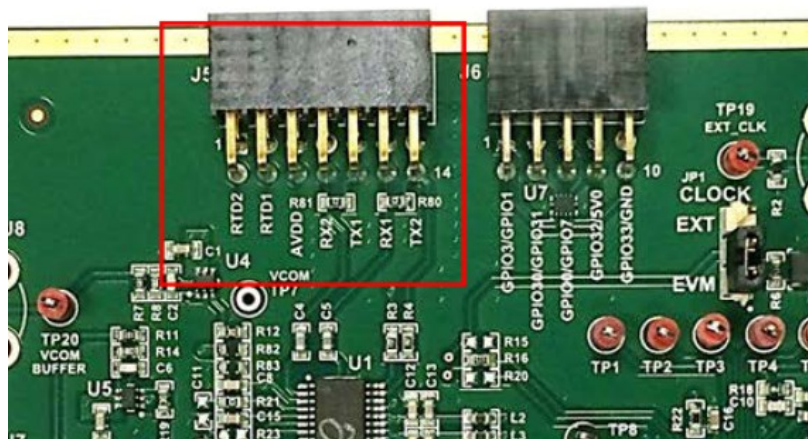


Figure 4

- After connecting transducers to the EVM and the EVM to PC, Select the COM port and click **CONNECT** (Refer *Figure 5*).
- Then **LOAD CONFIGURATION** under the **TDC1000** tab and load the settings file (TDC1000_Setup_Tlteam_mode0.txt) and change **TOF_MEAS_MODE** to Mode 2 and Enable **CH_SWP** and click **READ ALL**(Refer *Figure 6*).
- Go to the GRAPH tab and click START GRAPH and you can observe TOF readings in the **TDC AVG VALUE** tab (Refer *Figures 7 & 8*).

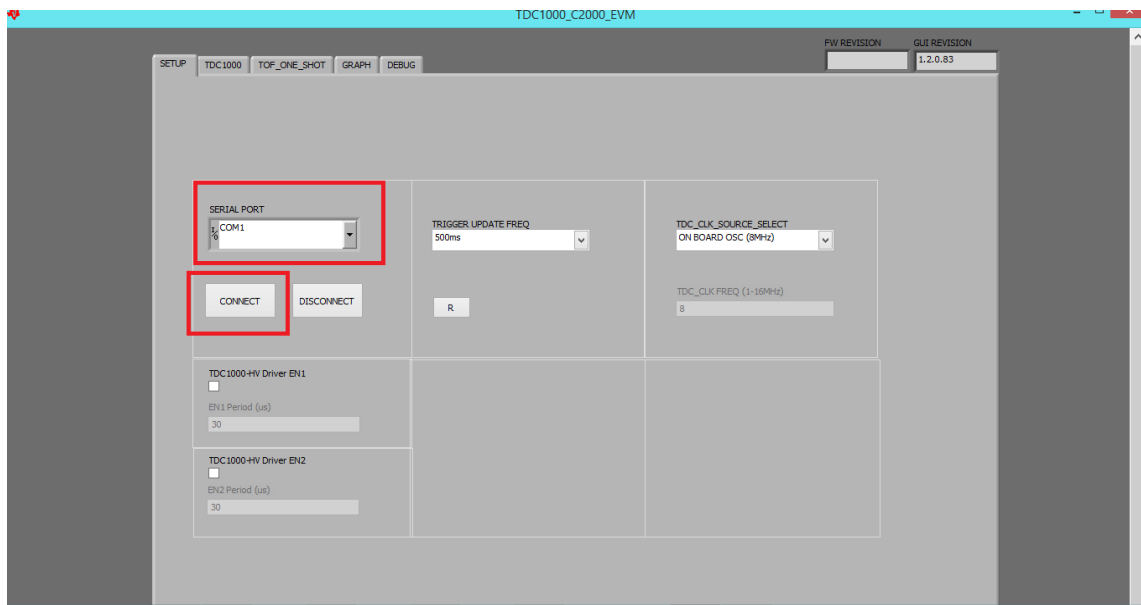


Figure 5

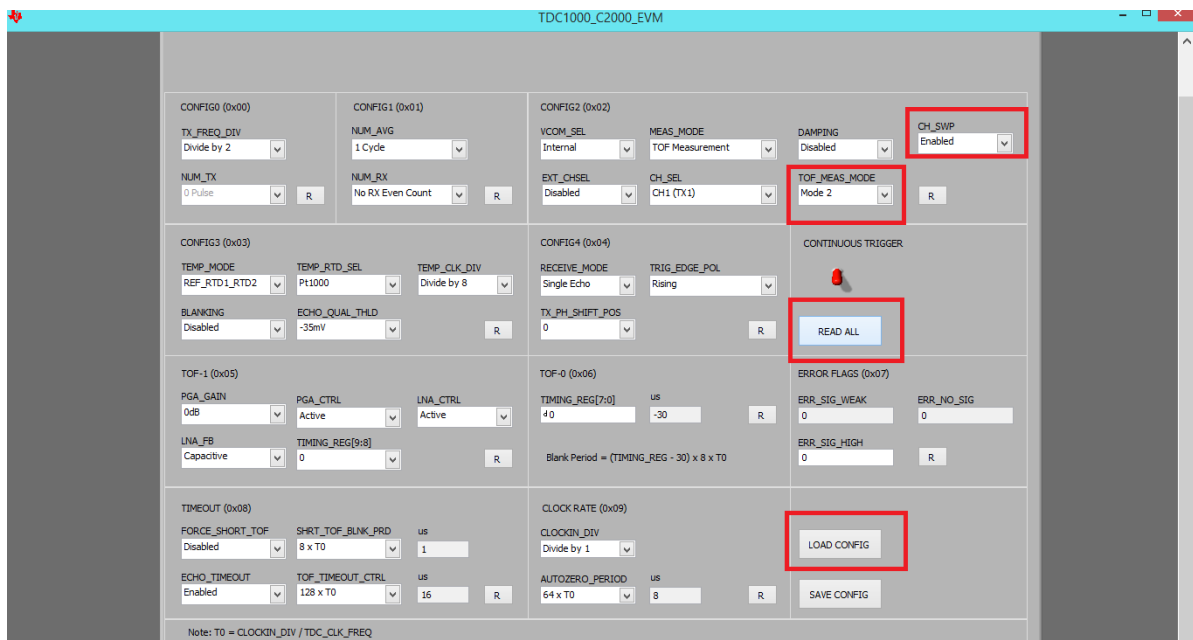


Figure 6

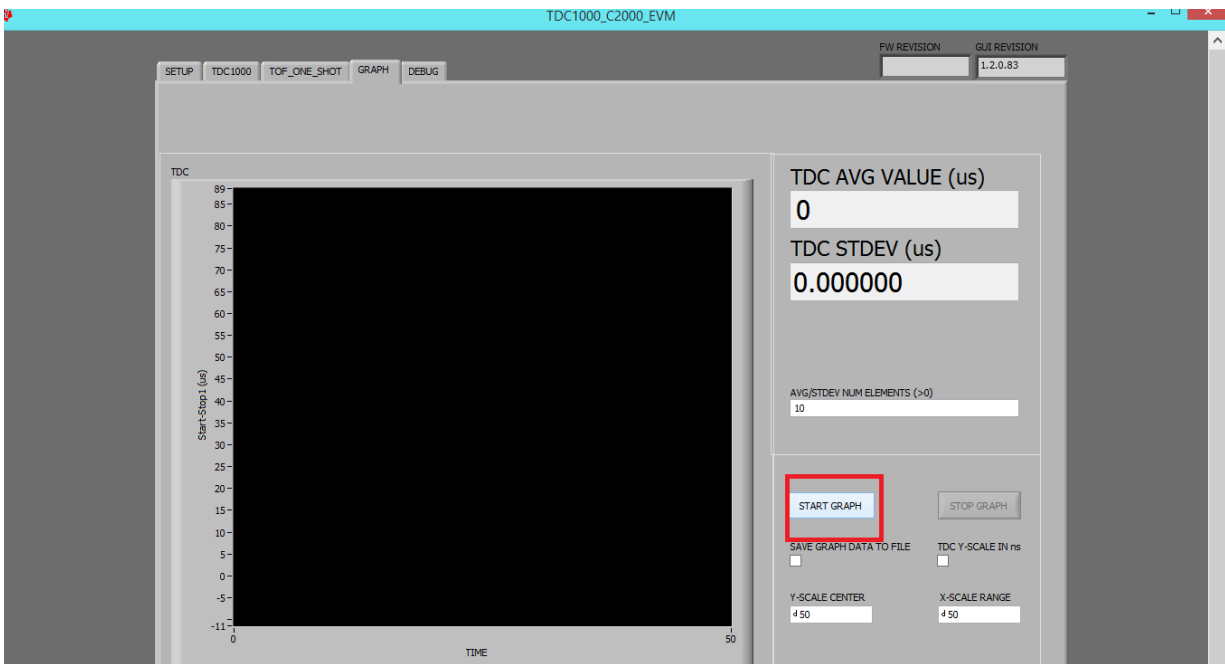


Figure 7

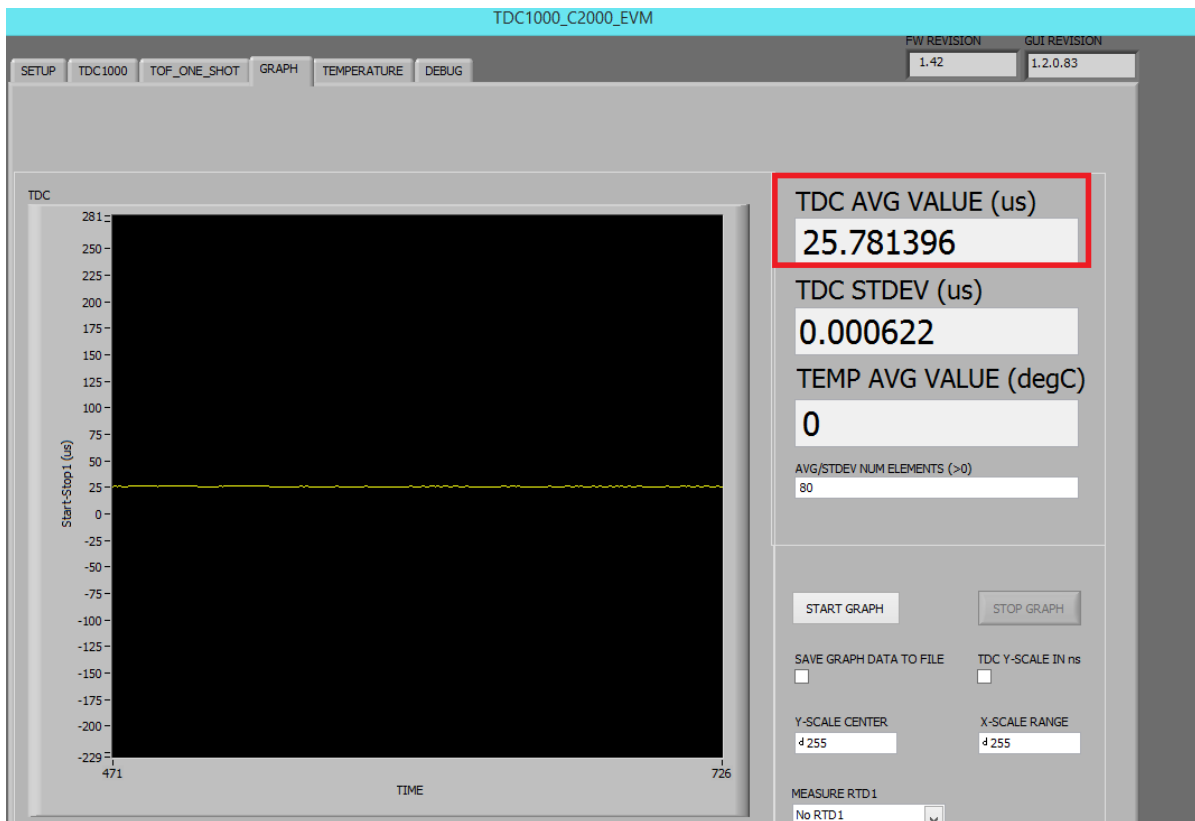


Figure 8