

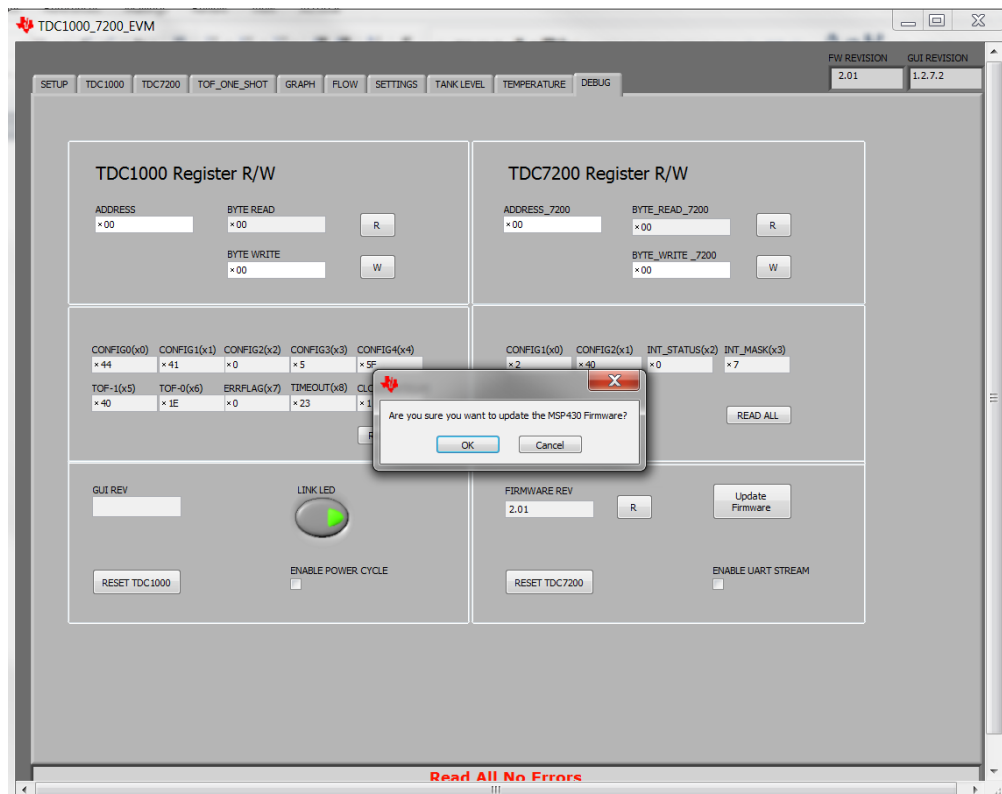
# TDC1000\_TDC7200EVM Firmware Upgrade Instructions

## Firmware Upgrade

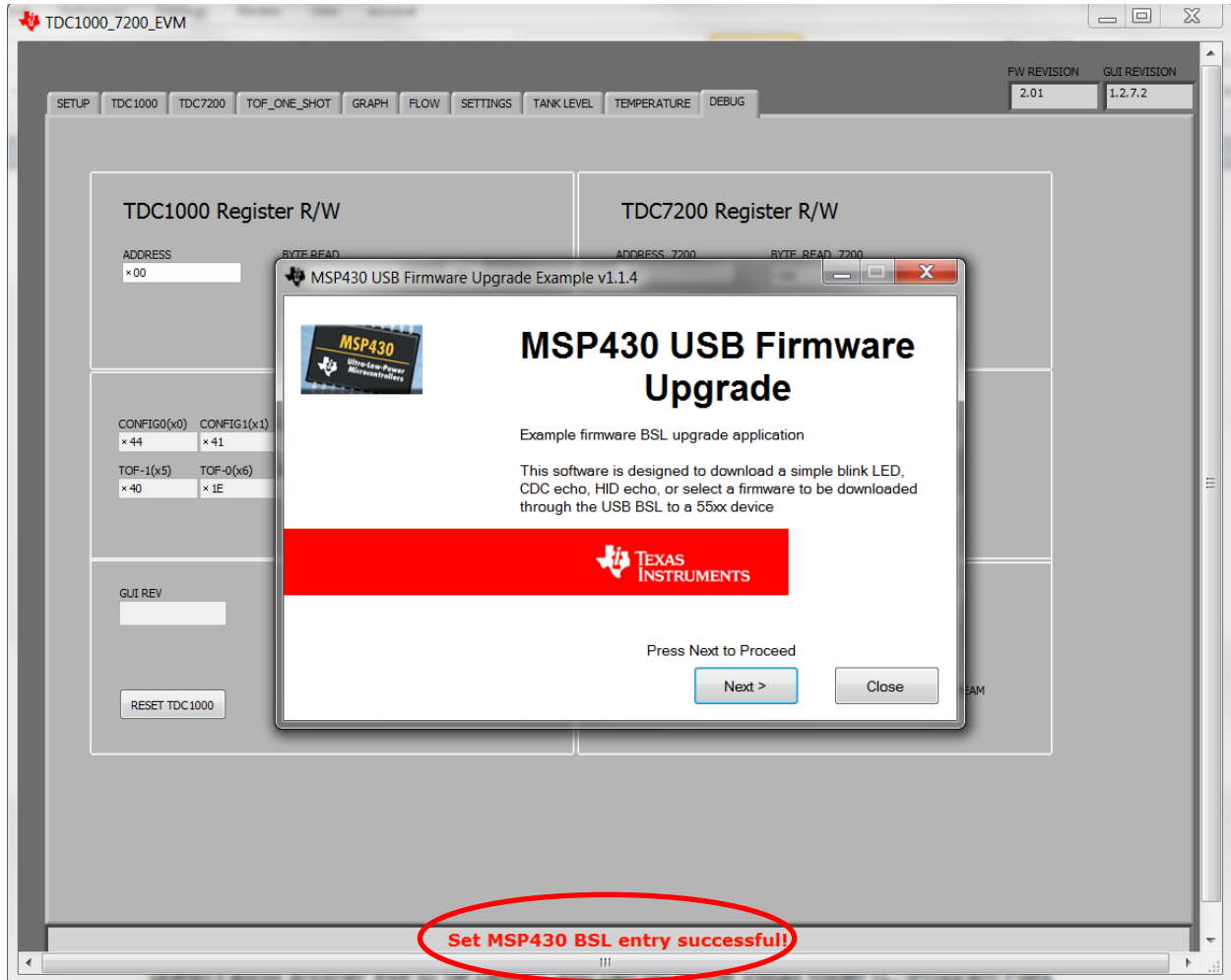
NOTE: Please make sure you are connecting to the TDC1000\_TDC7200EVM through a regular direct USB port and not through a USB hub. USB hubs cannot properly power the board (supply the current required) for a flash update of the MCU.

To change the TDC1000\_TDC7200EVM firmware, complete the following steps:

1. Connect the TDC1000\_TDC7200EVM to a PC.
2. Open the TDC1000\_TDC7200EVM GUI
3. Press "OK" if a connection error window pops up. If there is no connection error pop up, skip step 4.
4. Disconnect and reconnect the TDC1000\_TDC7200EVM to PC while holding BSL button SW1 down.
5. In the TDC1000\_TDC7200EVM GUI go to the "DEBUG" tab.
6. Click on the Update Firmware button.

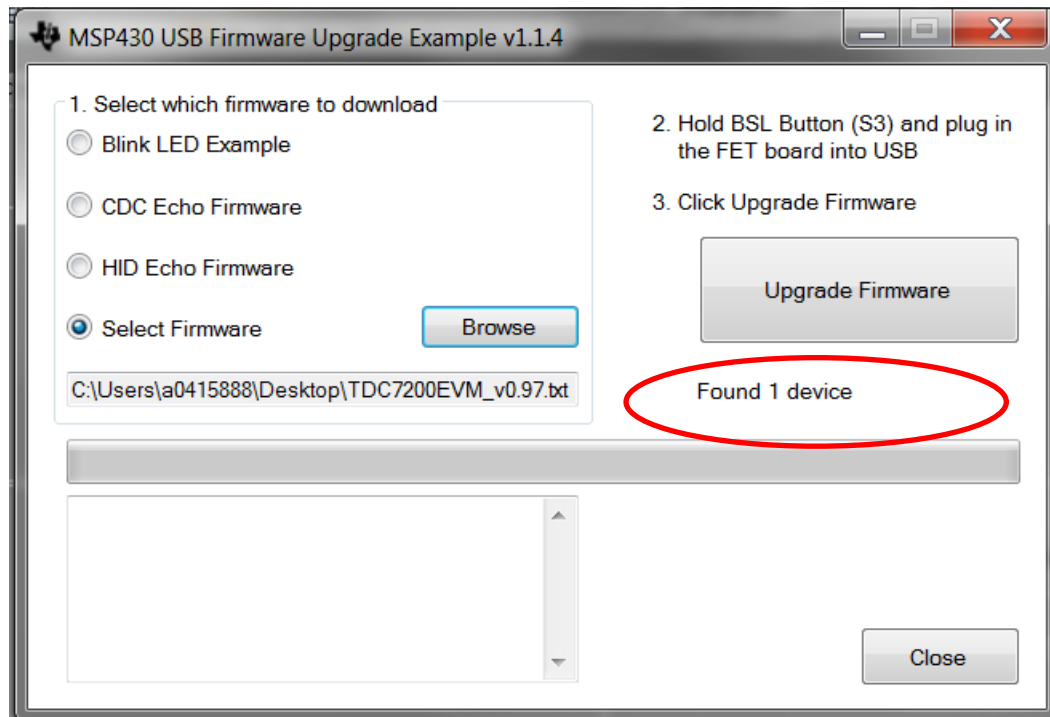


7. The MSP430 USB Firmware Upgrade window will pop up as shown below. Note if your TDC1000\_TDC7200EVM already has a valid firmware, it will report “Set MSP430 BSL entry successful” in the GUI status message box as shown in the screen shot below.



Note: If you don't see this GUI app coming up (probably your system protection/privacy settings doesn't allow another exe to be called), you can go to the install folder (C:\Program Files (x86)\Texas Instruments\TDC1000\_7200EVM\MSP430 USB Firmware Upgrade Example) and start the MSP430 bootstrap loader GUI application manually by double clicking "BSL\_USB\_GUI" and follow the screen instructions.

8. Click “Next” to proceed on the first prompt; read and accept the license agreement and click “Next” to continue. You should a screen which shows “Found 1 device” as below:



**Figure 1: USB Firmware Upgrade Window**

9. Select the Select Firmware button and browse to the firmware file. Latest firmware hex file for the EVM can be found in the GUI install folder C:\Program Files (x86)\Texas Instruments\TDC1000\_7200EVM\Firmware
10. Click on the Upgrade Firmware button to program the EVM. Close the application and TDC1000\_TDC7200EVM GUI when done.
11. Disconnect and reconnect the TDC1000\_TDC7200EVM USB connection. Then restart the TDC1000\_TDC7200EVM GUI.