

H3  
SJ-5303 (CLEAR)

H1  
SJ-5303 (CLEAR)

H4  
SJ-5303 (CLEAR)

H2  
SJ-5303 (CLEAR)

DNP  
FID3

DNP  
FID1

DNP  
FID2

PCB Number: PAM  
PCB Rev: E1

PCB  
LOGO  
Texas Instruments



PCB  
LOGO  
FCC disclaimer

PCB  
LOGO  
WEEE logo

PCB  
LOGO  
Pb-Free Symbol

PCB  
LOGO  
ESD Logo1

Variant/Label Table	
Variant	Label Text
001	Default

USB\_Cable  
MECH  
AK67421-0.3

ZZ1  
Label Assembly Note  
This Assembly Note is for PCB labels only

ZZ2  
Assembly Note  
These assemblies are ESD sensitive, ESD precautions shall be observed.

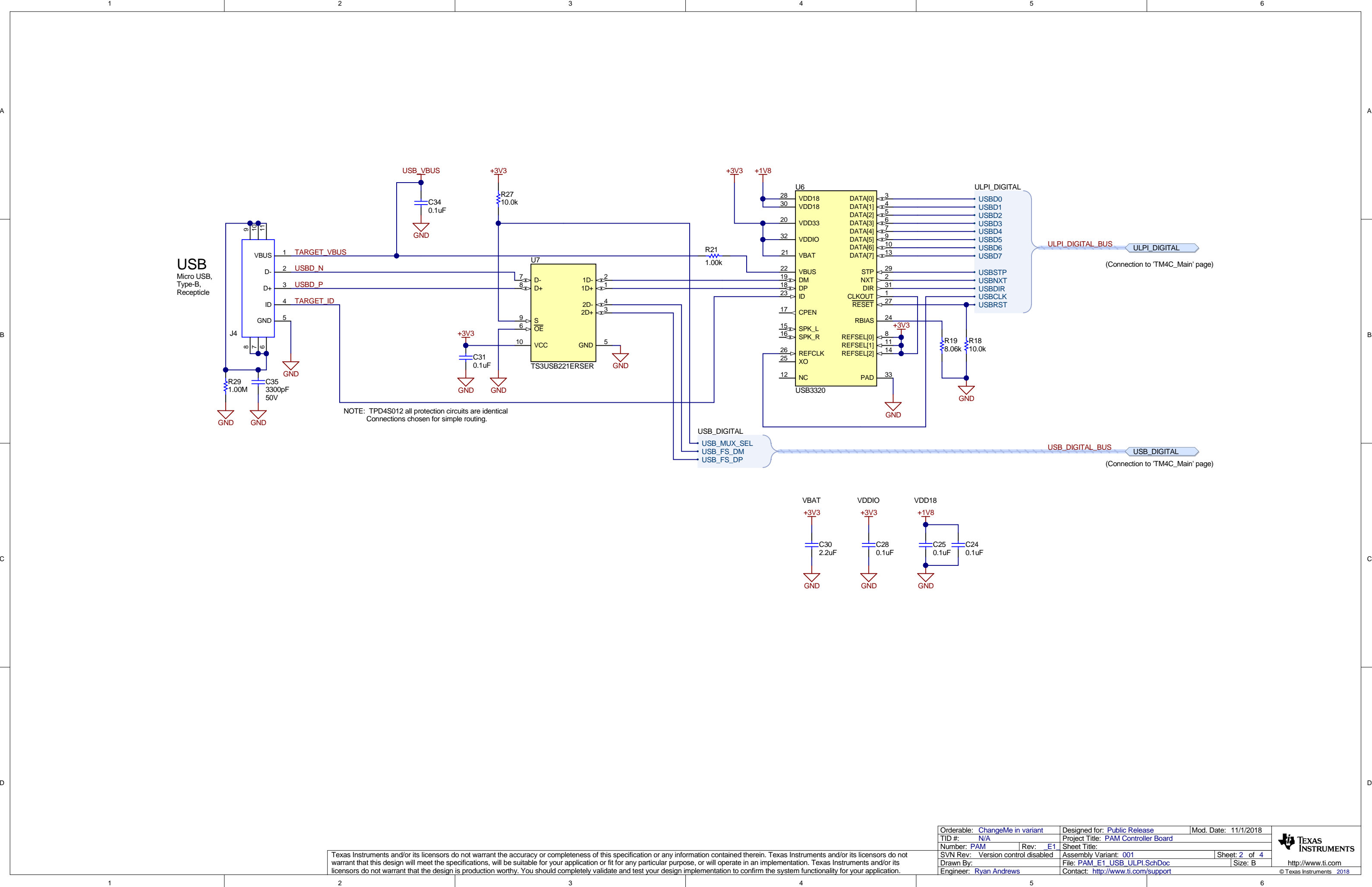
ZZ3  
Assembly Note  
These assemblies must be clean and free from flux and all contaminants. Use of no clean flux is not acceptable.

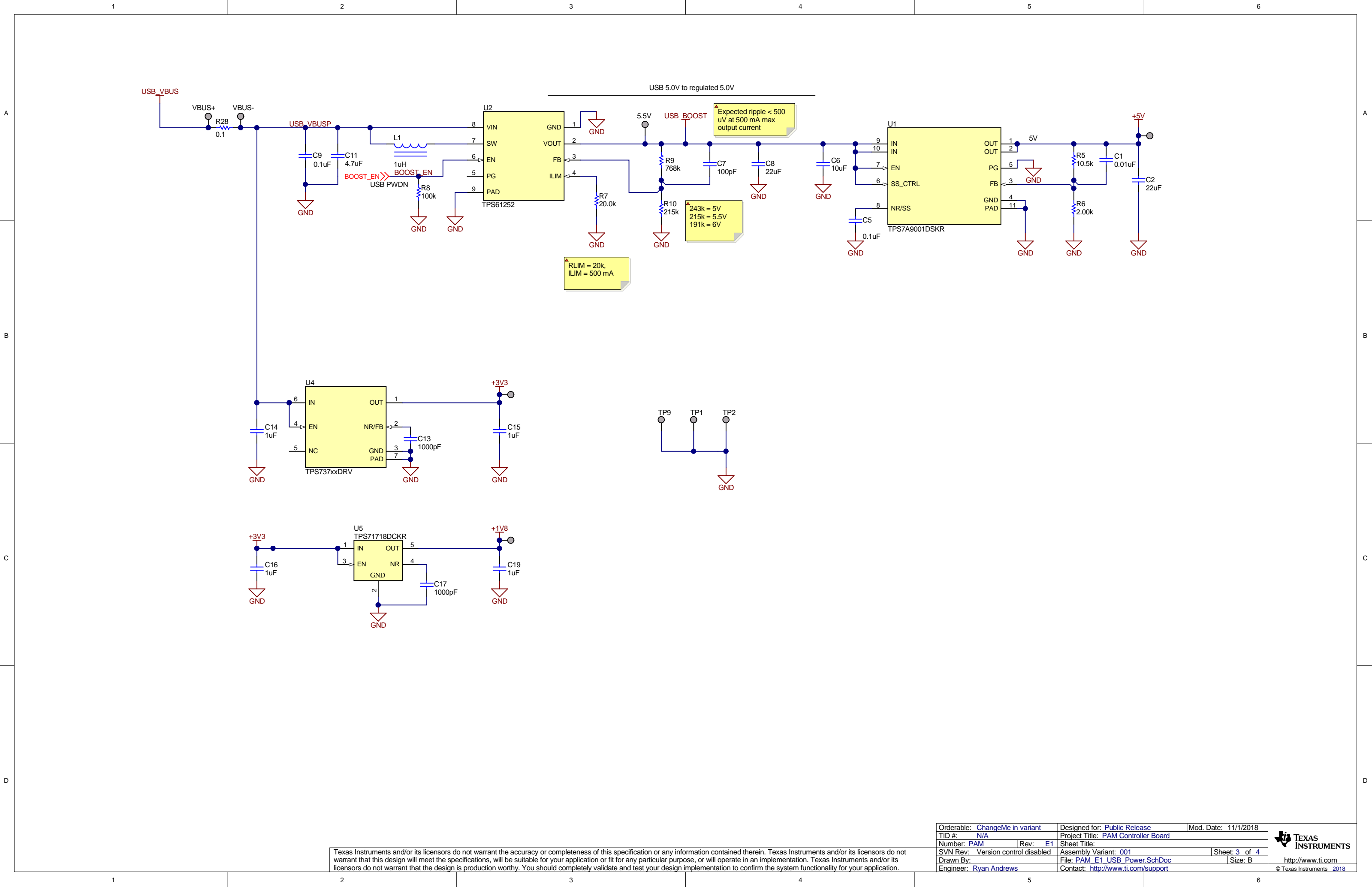
ZZ4  
Assembly Note  
These assemblies must comply with workmanship standards IPC-A-610 Class 2, unless otherwise specified.

ZZ5  
Assembly Note  
Please refer to Hardware Schematic page for Jumper placement

Texas Instruments and/or its licensors do not warrant the accuracy or completeness of this specification or any information contained therein. Texas Instruments and/or its licensors do not warrant that this design will meet the specifications, will be suitable for your application or fit for any particular purpose, or will operate in an implementation. Texas Instruments and/or its licensors do not warrant that the design is production worthy. You should completely validate and test your design implementation to confirm the system functionality for your application.

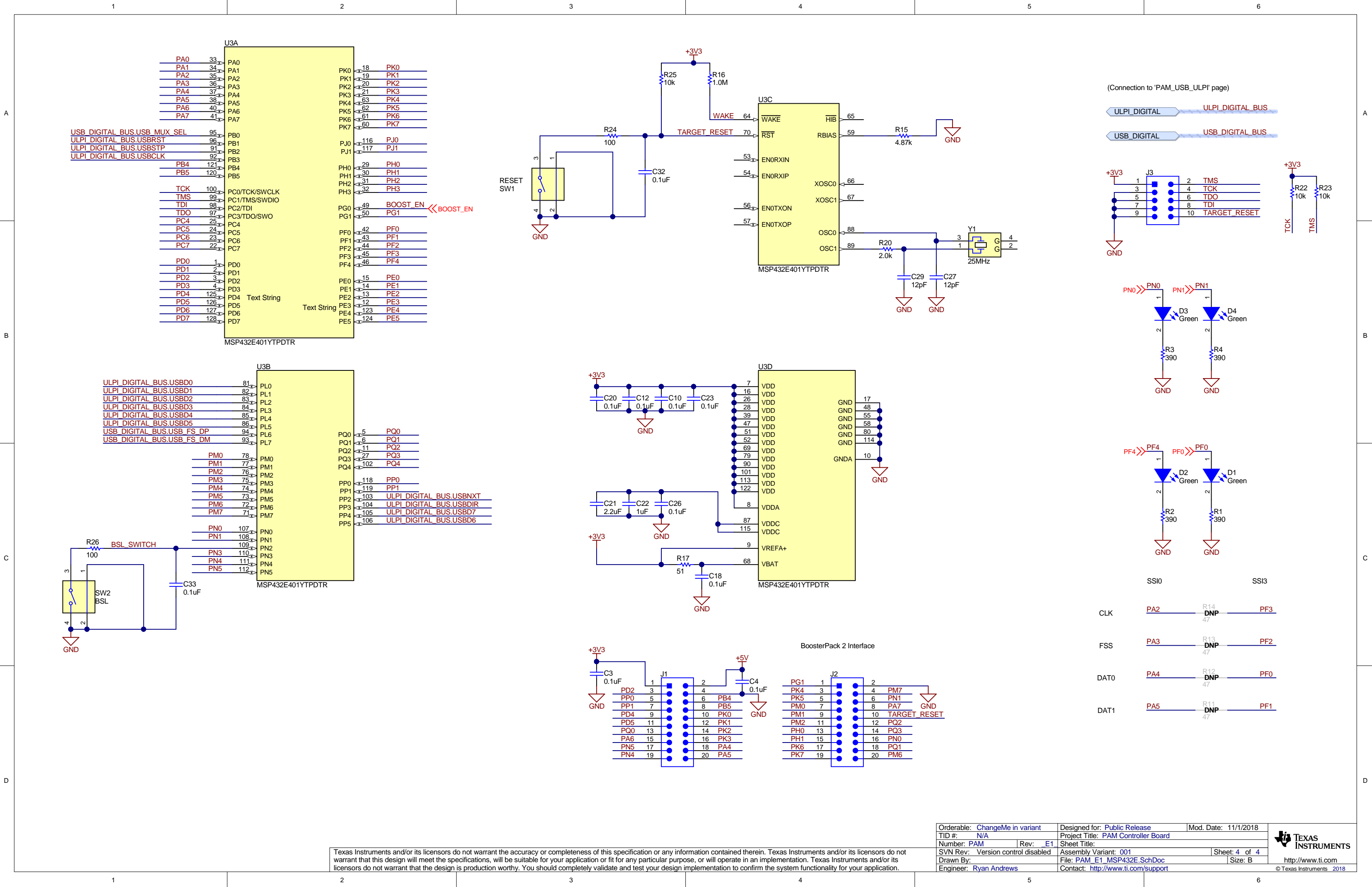
Orderable: <a href="#">ChangeMe in variant</a>		Designed for: <a href="#">Public Release</a>	Mod. Date: 11/1/2018
TID #: <a href="#">N/A</a>		Project Title: <a href="#">PAM Controller Board</a>	
Number: <a href="#">PAM</a>	Rev: <a href="#">E1</a>	Sheet Title:	
SVN Rev: <a href="#">Version control disabled</a>	Assembly Variant: <a href="#">001</a>	Sheet: <a href="#">1</a> of <a href="#">4</a>	
Drawn By:	File: <a href="#">PAM_E1_Hardware.SchDoc</a>	Size: B	
Engineer: <a href="#">Ryan Andrews</a>	Contact: <a href="#">http://www.ti.com/support</a>		





Texas Instruments and/or its licensors do not warrant the accuracy or completeness of this specification or any information contained therein. Texas Instruments and/or its licensors do not warrant that this design will meet the specifications, will be suitable for your application or fit for any particular purpose, or will operate in an implementation. Texas Instruments and/or its licensors do not warrant that the design is production worthy. You should completely validate and test your design implementation to confirm the system functionality for your application.

Orderable: <a href="#">ChangeMe in variant</a>	Designed for: <a href="#">Public Release</a>	Mod. Date: 11/1/2018
TID #: <a href="#">N/A</a>	Project Title: <a href="#">PAM Controller Board</a>	
Number: <a href="#">PAM</a>	Rev: <a href="#">E1</a>	Sheet Title:
SVN Rev: <a href="#">Version control disabled</a>	Assembly Variant: <a href="#">001</a>	Sheet: <a href="#">3</a> of <a href="#">4</a>
Drawn By:	File: <a href="#">PAM_E1_USB_Power.SchDoc</a>	Size: B
Engineer: <a href="#">Ryan Andrews</a>	Contact: <a href="#">http://www.ti.com/support</a>	



Texas Instruments and/or its licensors do not warrant the accuracy or completeness of this specification or any information contained therein. Texas Instruments and/or its licensors do not warrant that this design will meet the specifications, will be suitable for your application or fit for any particular purpose, or will operate in an implementation. Texas Instruments and/or its licensors do not warrant that the design is production worthy. You should completely validate and test your design implementation to confirm the system functionality for your application.

Orderable: <a href="#">ChangeMe in variant</a>	Designed for: <a href="#">Public Release</a>	Mod. Date: 11/1/2018
TID #: N/A	Project Title: <a href="#">PAM Controller Board</a>	
Number: <a href="#">PAM</a>	Rev: <a href="#">E1</a>	Sheet Title:
SVN Rev: <a href="#">Version control disabled</a>	Assembly Variant: <a href="#">001</a>	Sheet: <a href="#">4 of 4</a>
Drawn By:	File: <a href="#">PAM_E1_MSP432E.SchDoc</a>	Size: B
Engineer: <a href="#">Ryan Andrews</a>	Contact: <a href="#">http://www.ti.com/support</a>	