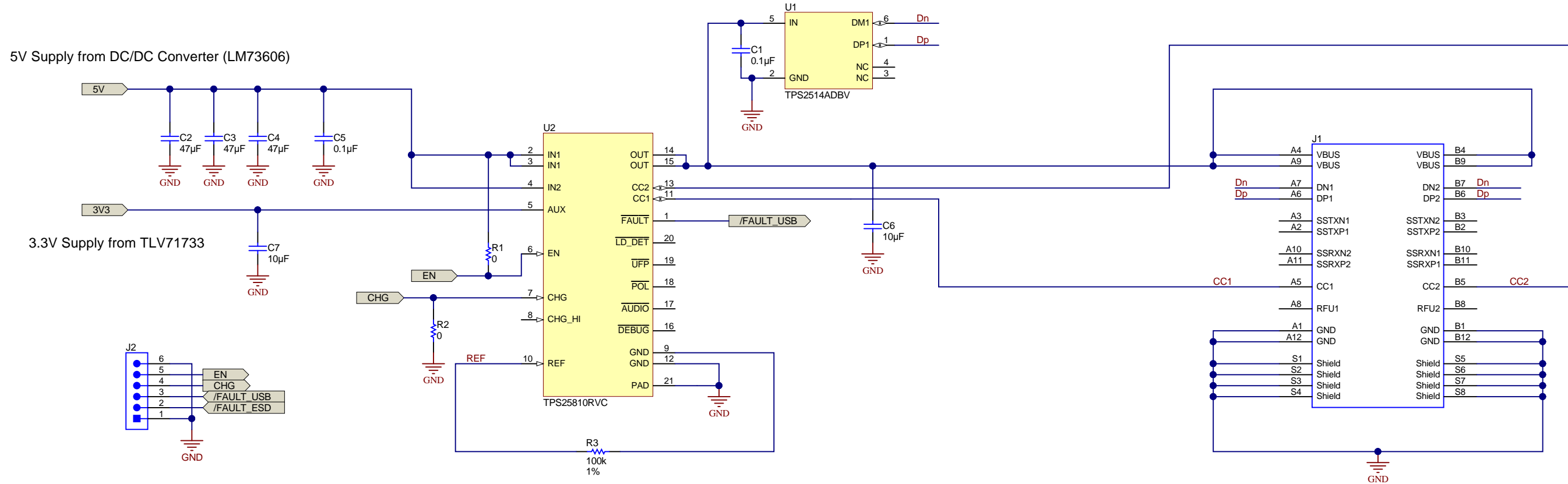


## USB Dedicated Charging Port Controller

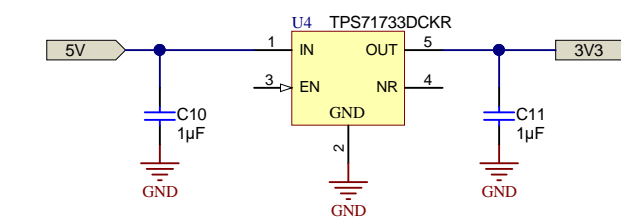


## USB Type-C DFP Controller and Power Switch with Load Detection

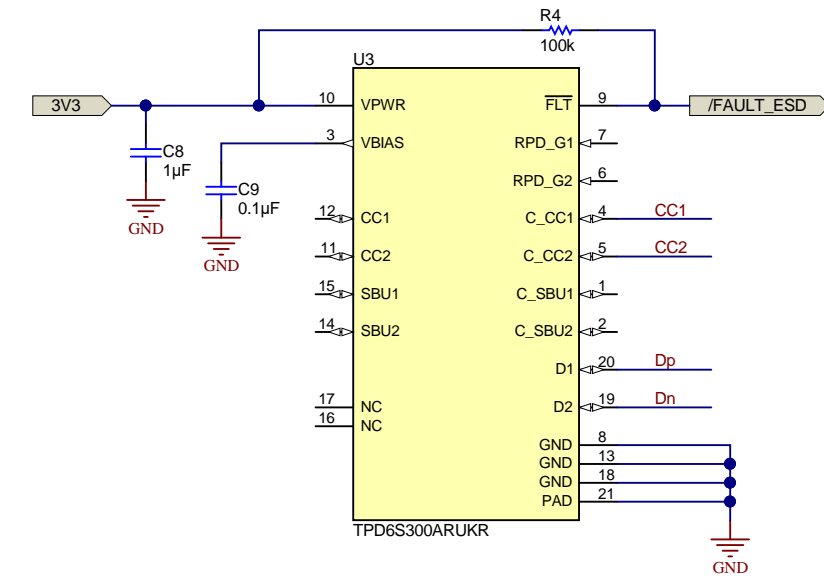
### Requirements:

Simple USB-C port with USB 2.0 support

- 1) CC Pin Port Controller (with Pullups/down - no PD communication)
  - (A) DFP (Downstream Facing Port) only
  - (B) USB 2.0 Power Mode (max 500mA @ 5V)
- 2) Current limiter (Turn-off / current limit @ 500mA)
- 3) Overcurrent Flag/Pin
- 4) Enable Pin



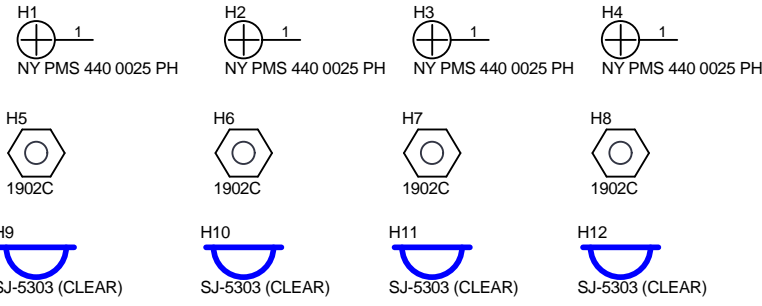
3.3V Supply for TPS25810 & TPD6S300  
(If 3.3V is already available, this circuit can be removed)



## USB Type-C™ Port Protector: Short-to-VBUS Overvoltage and IEC ESD Protection

Orderable: <a href="#">ChangeMe in variant</a>	Designed for: <a href="#">Public Release</a>	Mod. Date: 11/28/2019
TID #: N/A	Project Title: <a href="#">Change in menu Project/Project Options/Parameters</a>	
Number: XXX###	Rev: E1	Sheet Title:
SVN Rev: Not in version control	Assembly Variant: 001	Sheet: 2 of 3
Drawn By:	File: <a href="#">Page-1_SchDoc</a>	Size: B
Engineer: <a href="#">Enter name of project lead</a>	Contact: <a href="http://www.ti.com/support">http://www.ti.com/support</a>	

Texas Instruments and/or its licensors do not warrant the accuracy or completeness of this specification or any information contained therein. Texas Instruments and/or its licensors do not warrant that this design will meet the specifications, will be suitable for your application or fit for any particular purpose, or will operate in an implementation. Texas Instruments and/or its licensors do not warrant that the design is production worthy. You should completely validate and test your design implementation to confirm the system functionality for your application.



PCB Number: XXX###  
 PCB Rev: E1

PCB LOGO  
 Texas Instruments



PCB LOGO  
 FCC disclaimer

PCB LOGO  
 WEEE logo

Variant/Label Table	
Variant	Label Text
001	ChangeMe!
002	ChangeMe!

LBL1  
**PCB Label**  
 THT-14-423-10  
 Size: 0.65" x 0.20 "

ZZ1  
**Label Assembly Note**  
 This Assembly Note is for PCB labels only

ZZ2  
**Assembly Note**  
 These assemblies are ESD sensitive, ESD precautions shall be observed.

ZZ3  
**Assembly Note**  
 These assemblies must be clean and free from flux and all contaminants. Use of no clean flux is not acceptable.

ZZ4  
**Assembly Note**  
 These assemblies must comply with workmanship standards IPC-A-610 Class 2, unless otherwise specified.