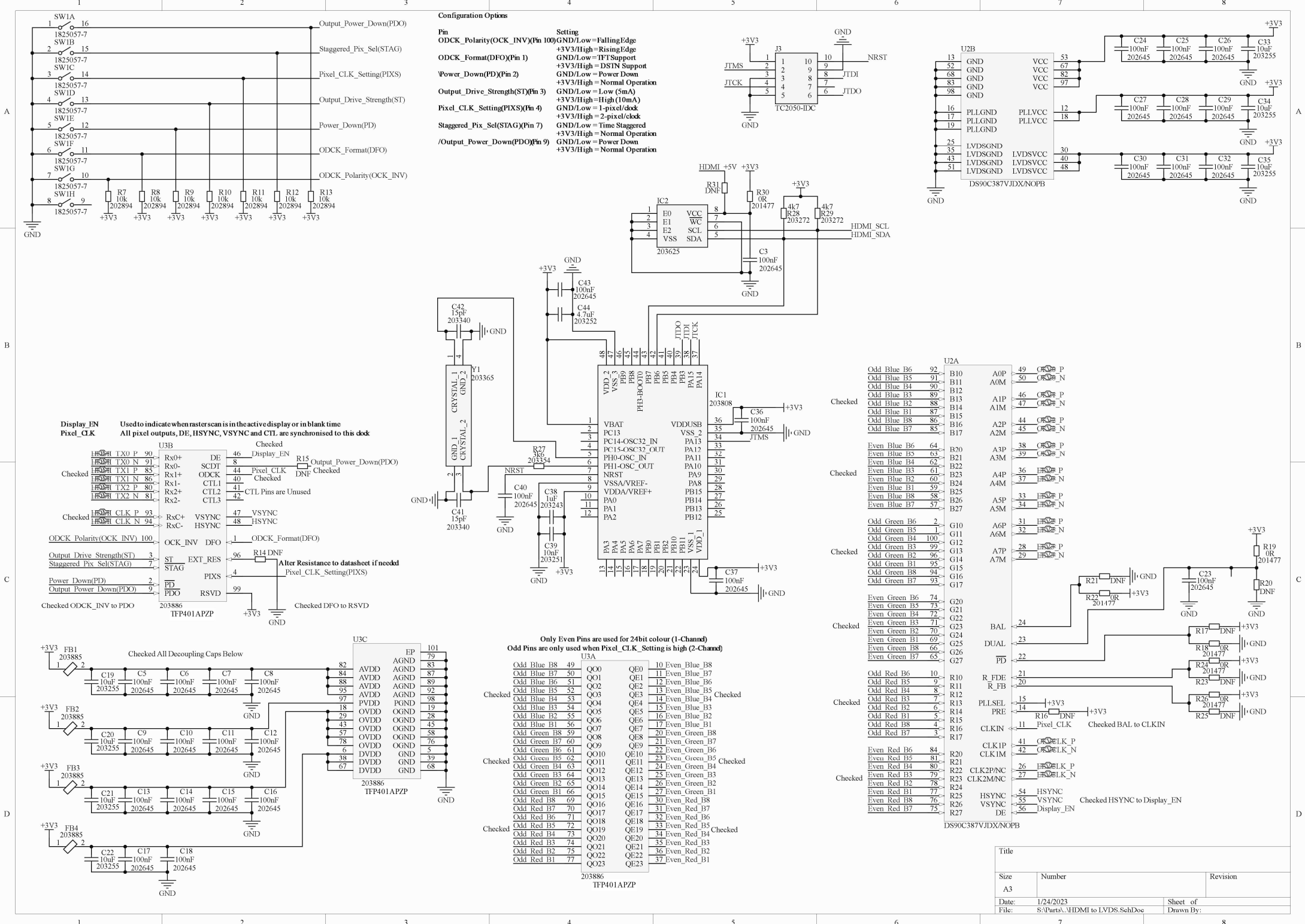


Title		
Size	Number	Revision
A3		
Date:	1/24/2023	Sheet of
File:	S:\Parts\...Connectors & PS.SchDoc	Drawn By:



Configuration Options

Pin	Setting
ODCK_Polarity(ODCK_INV)(Pin 100)	GND/Low = Falling Edge +3V3/High = Rising Edge
ODCK_Format(DFO)(Pin 1)	+3V3/High = IT Support GND/Low = IT Support
Power_Down(PD)(Pin 2)	+3V3/High = Normal Operation GND/Low = Power Down
Output_Drive_Strengh(ST)(Pin 3)	+3V3/High = High (10mA) GND/Low = Low (5mA)
Pixel_CLK_Setting(PXIS)(Pin 4)	GND/Low = 1-pixel/clock +3V3/High = 2-pixel/clock
Staggered_Pix_Sel(STAG)(Pin 7)	GND/Low = Time Staggered +3V3/High = Normal Operation
/Output_Power_Down(PDO)(Pin 9)	GND/Low = Power Down +3V3/High = Normal Operation

Pin Configuration Table

Only Even Pins are used for 24bit colour (1-Channd)
Odd Pins are only used when Pixel_CLK_Setting is high (2-Channd)

Pin	Signal	Pin	Signal
49	Q00	10	Even Blue B8
50	Q01	11	Even Blue B7
51	Q02	12	Even Blue B6
52	Q03	13	Even Blue B5
53	Q04	14	Even Blue B4
54	Q05	15	Even Blue B3
55	Q06	16	Even Blue B2
56	Q07	17	Even Blue B1
58	Q08	20	Even Green B8
59	Q09	21	Even Green B7
60	Q10	22	Even Green B6
61	Q11	23	Even Green B5
62	Q12	24	Even Green B4
63	Q13	25	Even Green B3
64	Q14	26	Even Green B2
66	Q15	27	Even Green B1
69	Q16	30	Even Red B8
70	Q17	31	Even Red B7
71	Q18	32	Even Red B6
72	Q19	33	Even Red B5
73	Q20	34	Even Red B4
74	Q21	35	Even Red B3
75	Q22	36	Even Red B2
77	Q23	37	Even Red B1

Title		
Size	Number	Revision
A3		
Date:	1/24/2023	Sheet of
File:	S:\Part3\HDMI to LVDS_Sch.Doe	Drawn By: