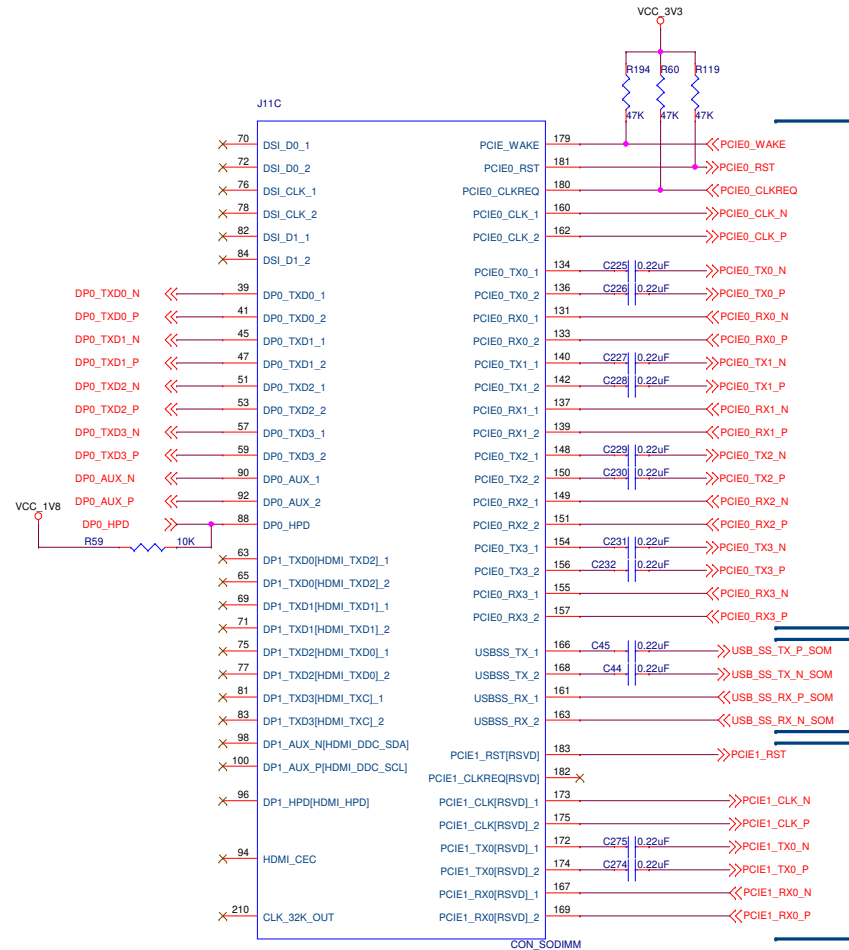


NVIDIA_SOM_PCI_Interface

8.1 Gbps, 100 ohm, GND
 reference plane,
 trace spacing: 5x
 Max Via: 2, Symmetrical
 GND stitching Via, 1x
 distance
 intra pair skew: 5mil



Check PCIE volatge level and signal, if signal has to be removed from level converter

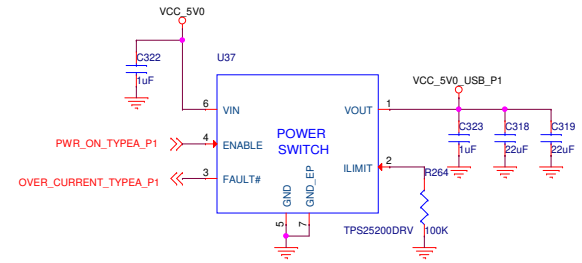
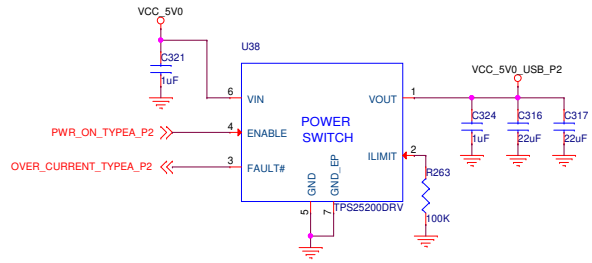
Capacitor C33,C34,C35,C36,C37,C38,C39,C40,C41,C42,C43,C44 keep close to the connector J4.

PCI0 X 4 For SSD

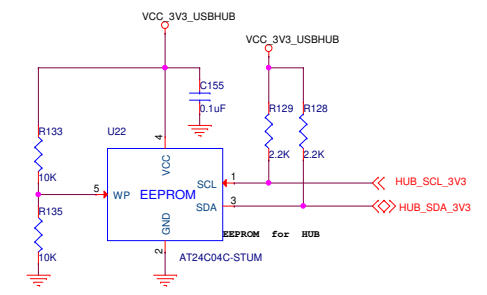
USB3.1 For USB HUB
 Check TX and RX pair connection
 Check positive and Negative pair

PCI 1 For LAN7430

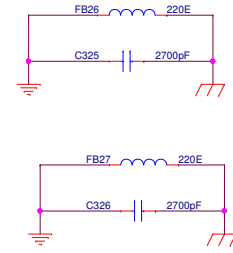
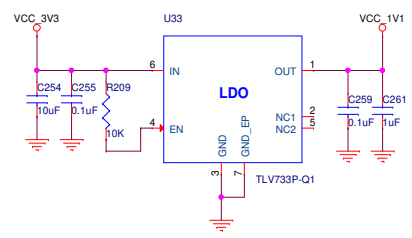
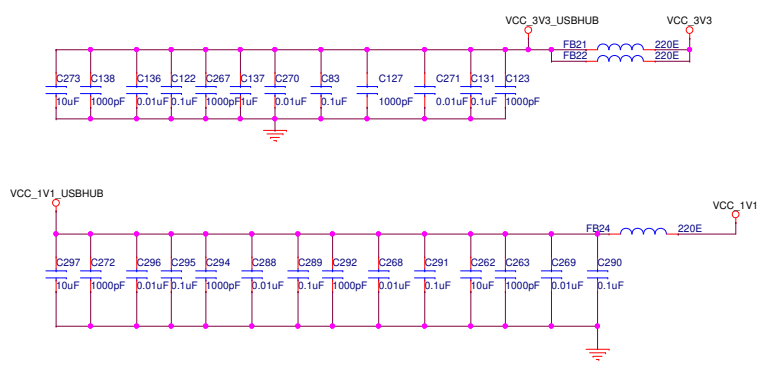
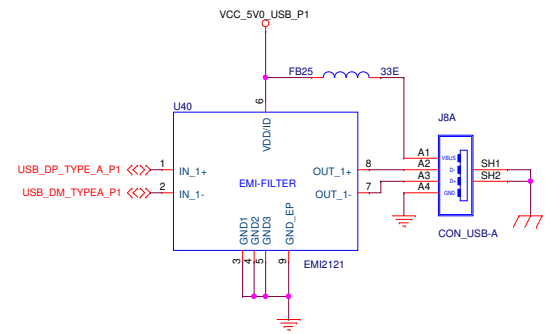
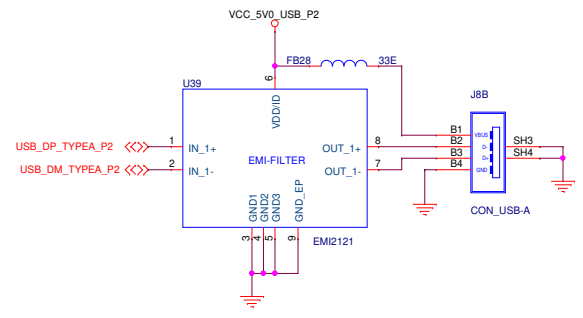
USB HUB Downstream Port Enable



EEPROM



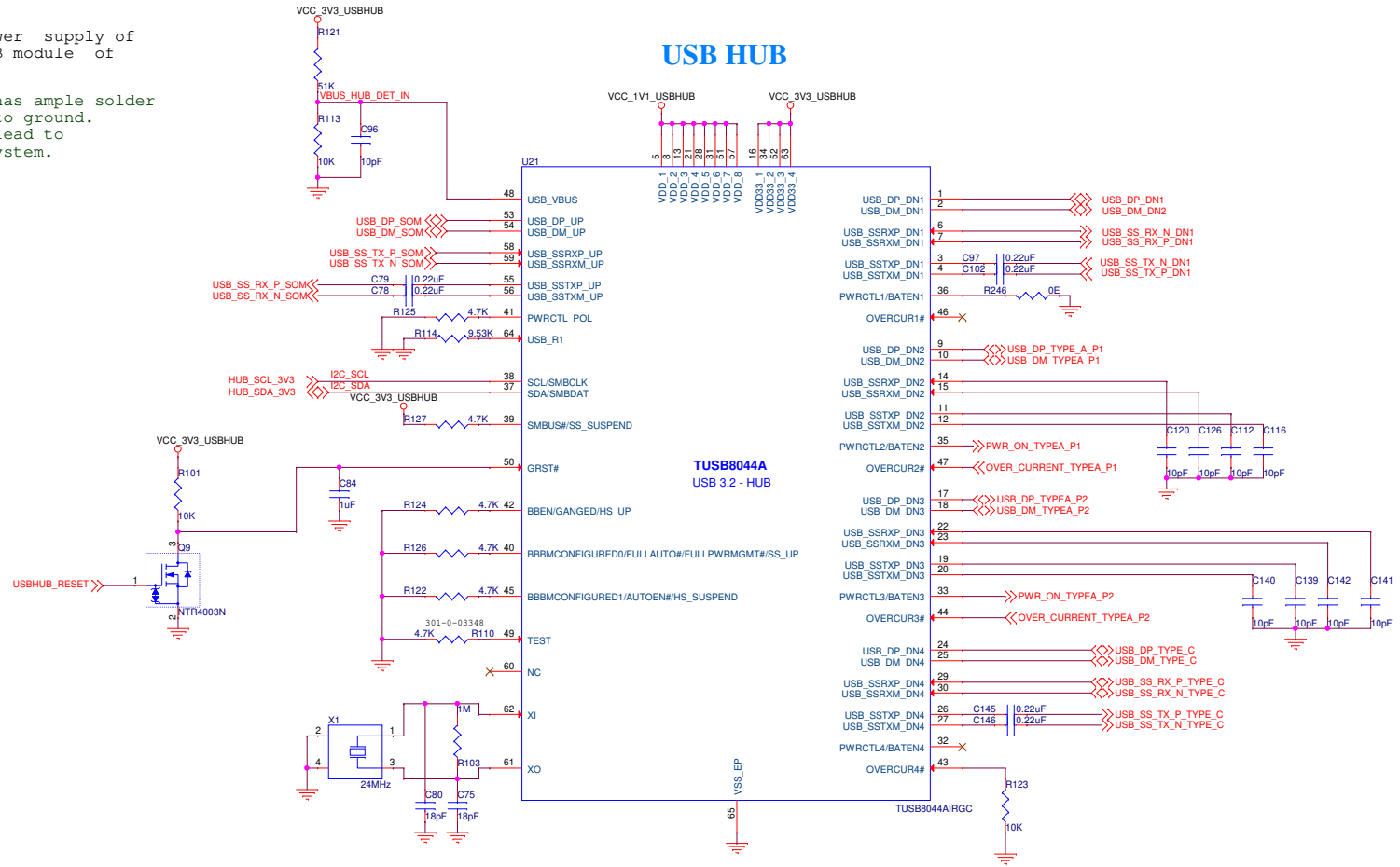
USB TYPE A PORT



Note : Before enabling the power supply of HUB make sure that USB module of Nvidia is UP

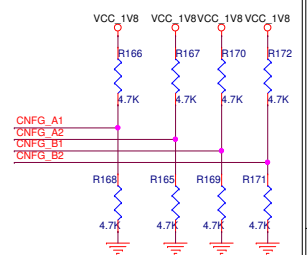
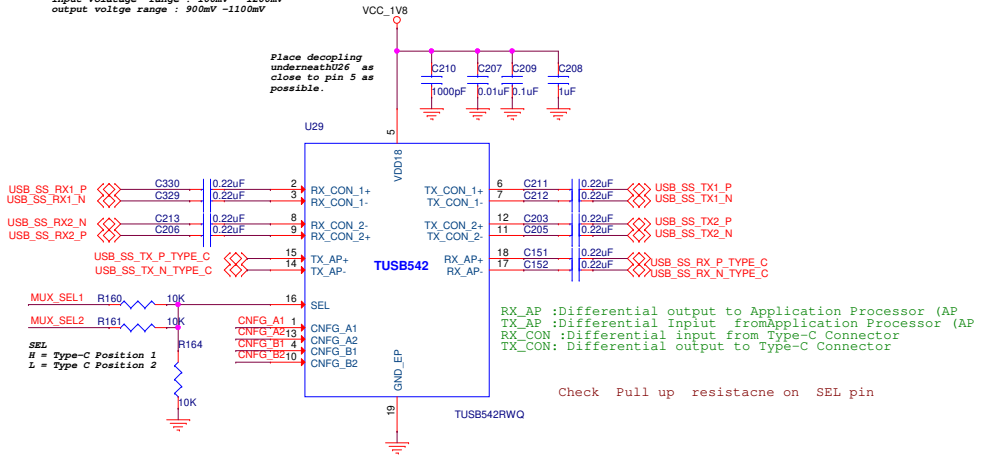
1) Ensure thermal pad has ample solder for stable connection to ground. Improper grounding can lead to functional issues in system.

Check Power reset options during Active reset and Passive resety

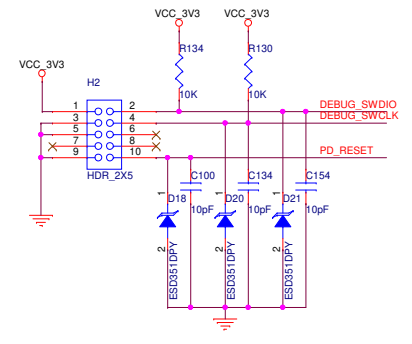
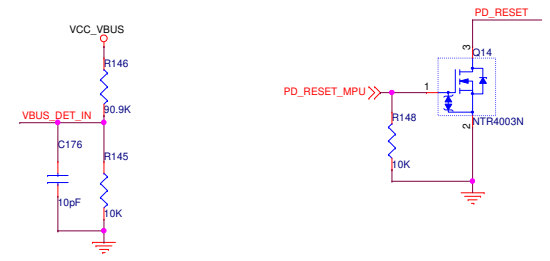
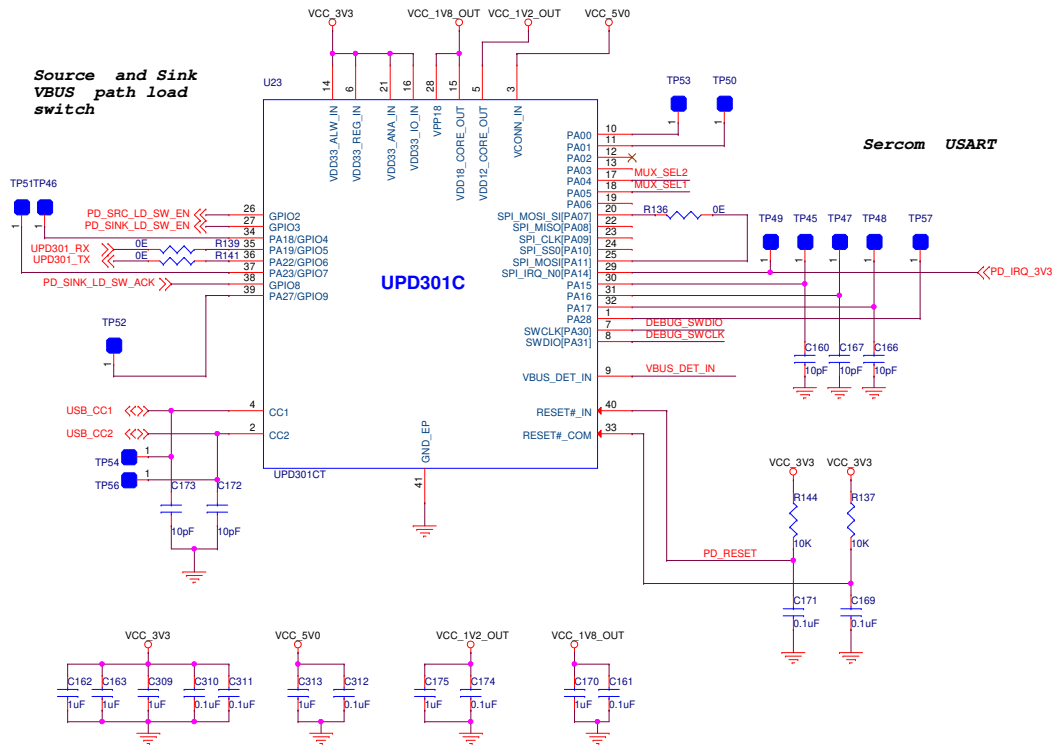


Ensure thermal pad has ample solder for stable connection to ground. Improper grounding can lead to functional issues in system.

Input Voltage range : 100mV - 1200mV
 output voltage range : 900mV -1100mV



**Source and Sink
 VBUS path load
 switch**



Connector for programming ATME ICE

TYPE C Connector

