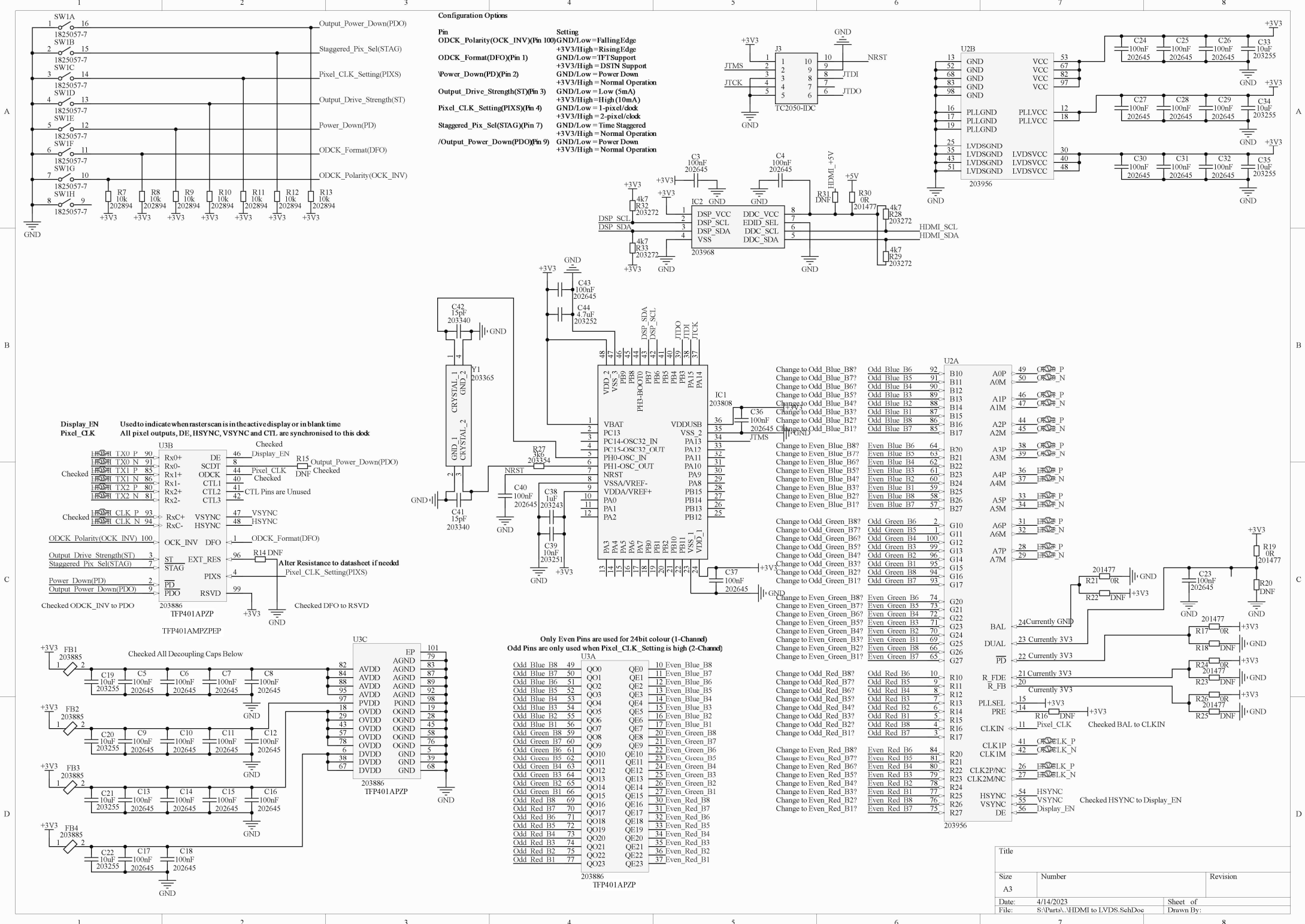


Title		
Size	Number	Revision
A3		
Date:	4/14/2023	Sheet of
File:	S:\Parts\...Connectors & PS.SchDoc	Drawn By:



Configuration Options

Pin Setting
ODCK_Polarity(OCK_INV)(Pin 100) GND/Low = Falling Edge
 +3V3/High = Rising Edge
ODCK_Format(DFO)(Pin 1) +3V3/High = IT Support
 +3V3/High = DSIN Support
Power_Down(PD)(Pin 2) GND/Low = Power Down
 +3V3/High = Normal Operation
Output_Drive_Strength(ST)(Pin 3) GND/Low = Low (5mA)
 +3V3/High = High (10mA)
Pixel_CLK_Setting(PXIS)(Pin 4) GND/Low = 1-pixel/clock
 +3V3/High = 2-pixel/clock
Staggered_Pix_Sel(STAG)(Pin 7) GND/Low = Time Staggered
 +3V3/High = Normal Operation
/Output_Power_Down(PDO)(Pin 9) GND/Low = Power Down
 +3V3/High = Normal Operation

Only Even Pins are used for 24bit colour (1-Channel)
Odd Pins are only used when Pixel_CLK_Setting is high (2-Channel)

Pin	Signal	Pin	Signal
Q00	10 Even Blue B8	Q08	20 Even Green B8
Q01	11 Even Blue B7	Q09	21 Even Green B7
Q02	12 Even Blue B6	Q10	22 Even Green B6
Q03	13 Even Blue B5	Q11	23 Even Green B5
Q04	14 Even Blue B4	Q12	24 Even Green B4
Q05	15 Even Blue B3	Q13	25 Even Green B3
Q06	16 Even Blue B2	Q14	26 Even Green B2
Q07	17 Even Blue B1	Q15	27 Even Green B1
Q08	18 Even Green B8	Q16	28 Even Green B8
Q09	19 Even Green B7	Q17	29 Even Green B7
Q10	20 Even Green B6	Q18	30 Even Green B6
Q11	21 Even Green B5	Q19	31 Even Green B5
Q12	22 Even Green B4	Q20	32 Even Green B4
Q13	23 Even Green B3	Q21	33 Even Green B3
Q14	24 Even Green B2	Q22	34 Even Green B2
Q15	25 Even Green B1	Q23	35 Even Green B1
Q16	26 Even Red B8	Q24	36 Even Red B8
Q17	27 Even Red B7	Q25	37 Even Red B7
Q18	28 Even Red B6	Q26	38 Even Red B6
Q19	29 Even Red B5	Q27	39 Even Red B5
Q20	30 Even Red B4	Q28	40 Even Red B4
Q21	31 Even Red B3	Q29	41 Even Red B3
Q22	32 Even Red B2	Q30	42 Even Red B2
Q23	33 Even Red B1	Q31	43 Even Red B1

Title		
Size	Number	Revision
A3		
Date:	4/14/2023	Sheet of
File:	S:\Part3_HDMI to LVDS_Sch.Doc	Drawn By: