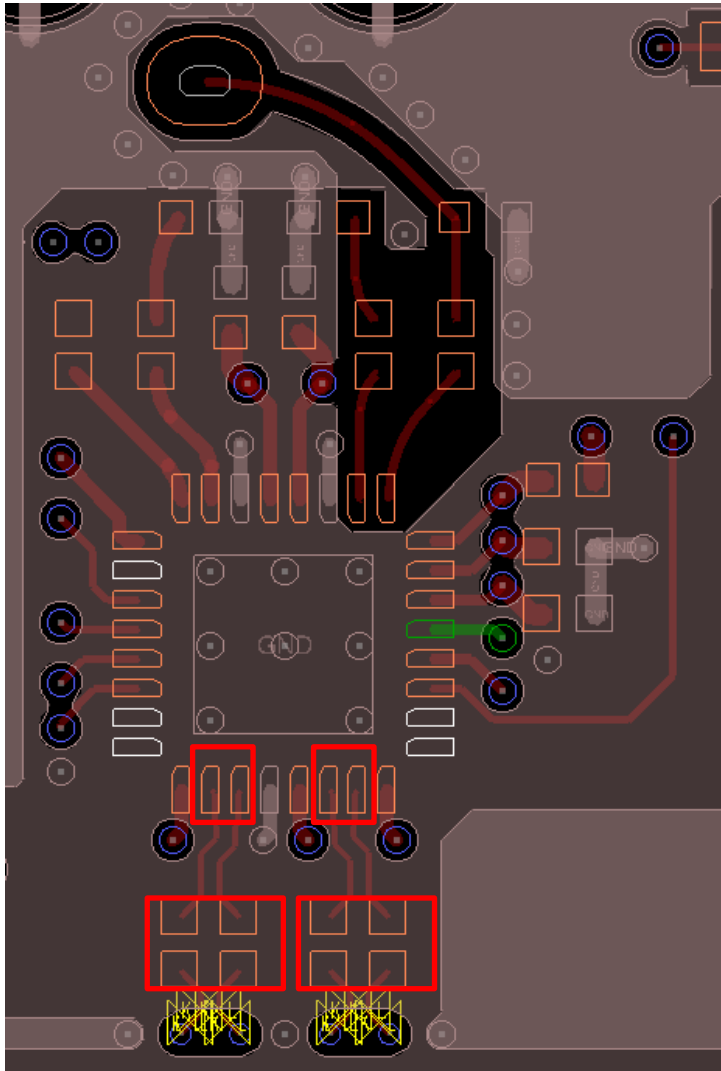
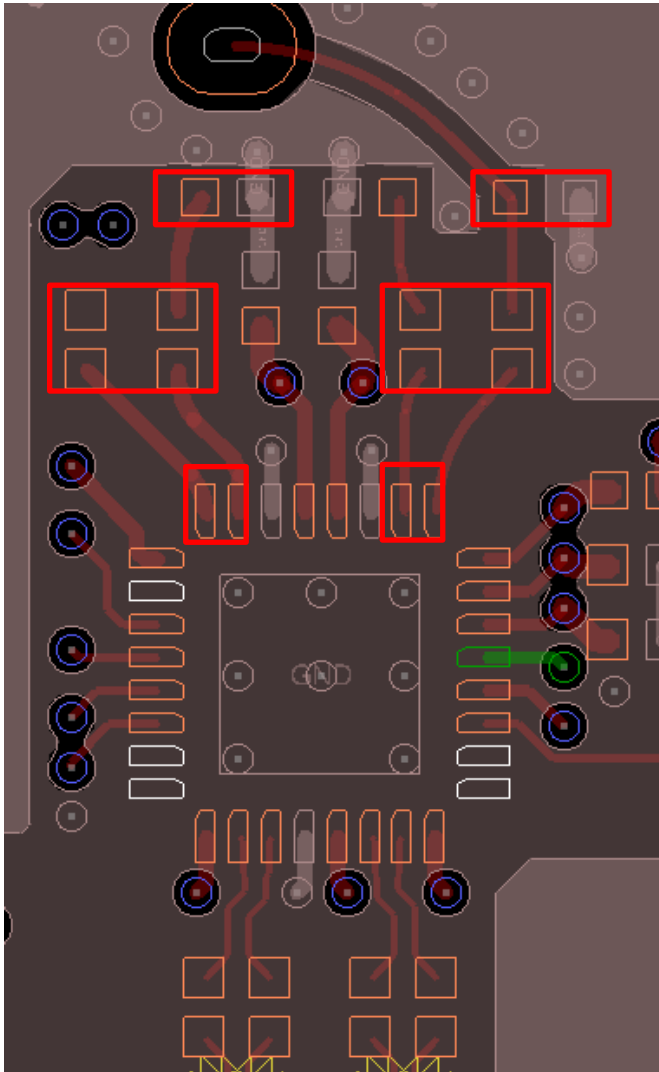


100-ohm Differential trace comment



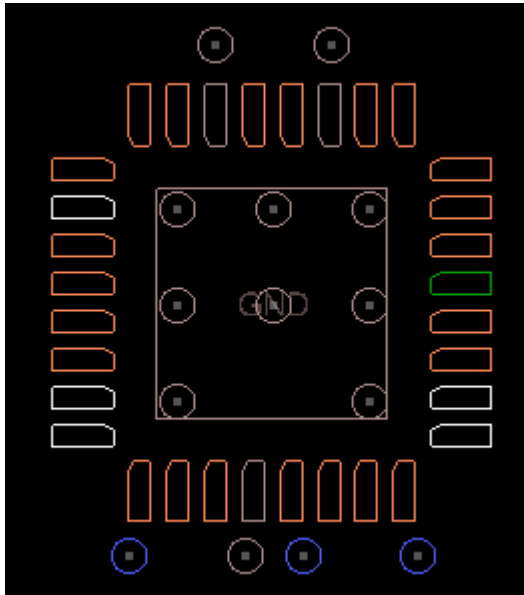
- Provide void – no GND or VCC plane – under AC coupling Caps and 100-ohm IN0 and OUT0
- SDI_OUT is not used – trace referenced to layer GND02

75-ohm-Single-ended trace comment



- Provide void – no GND or VCC plane – under AC coupling Caps, high speed trace, and protection device
- Please discuss with 12G SDI BNC connector to make sure BNC layout is optimized for 12G SDI operation

Top solder paste



- Top solder paste: Please follow LMH1297 data sheet figure 42 – high speed trace layout recommendations.

