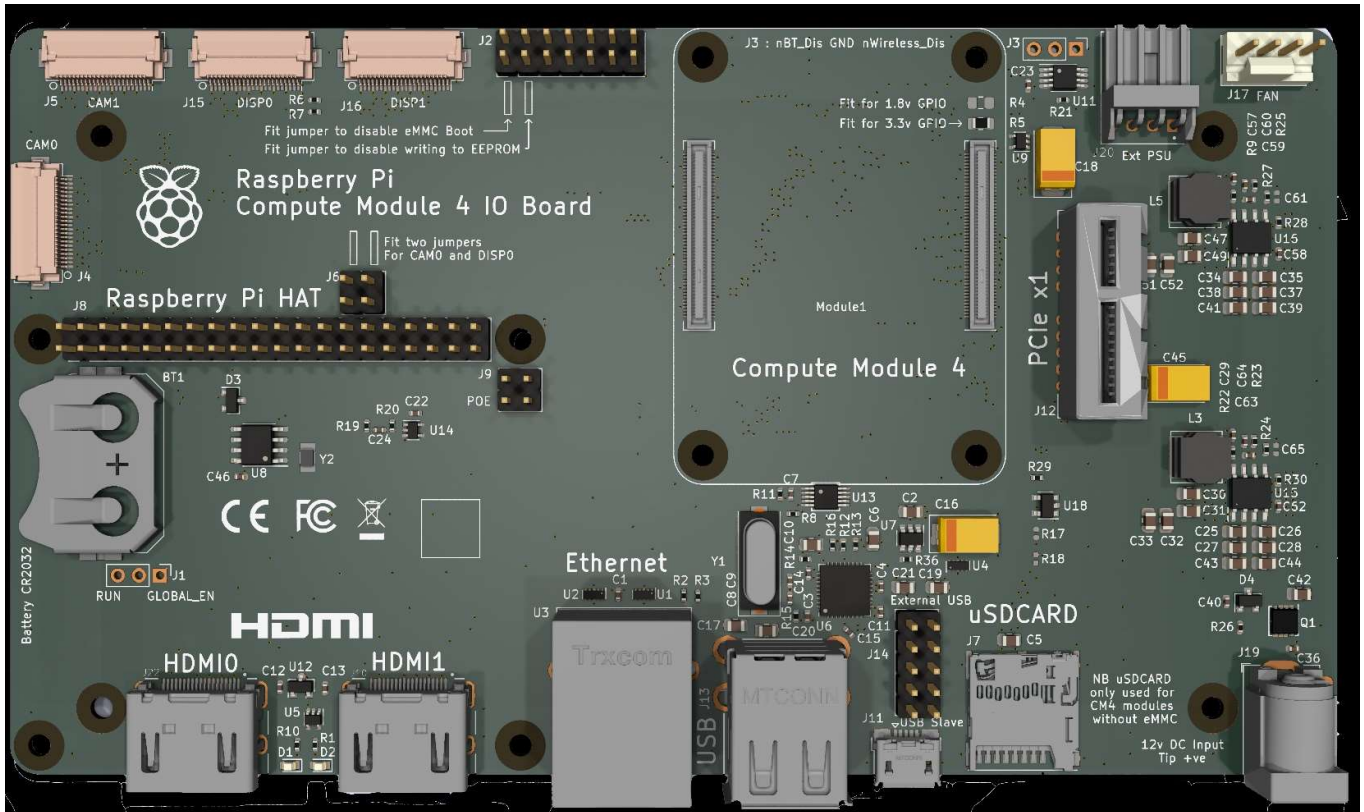


CM4 I/O Board with LVDS Display



CM4 IO Board
datasheet.pdf



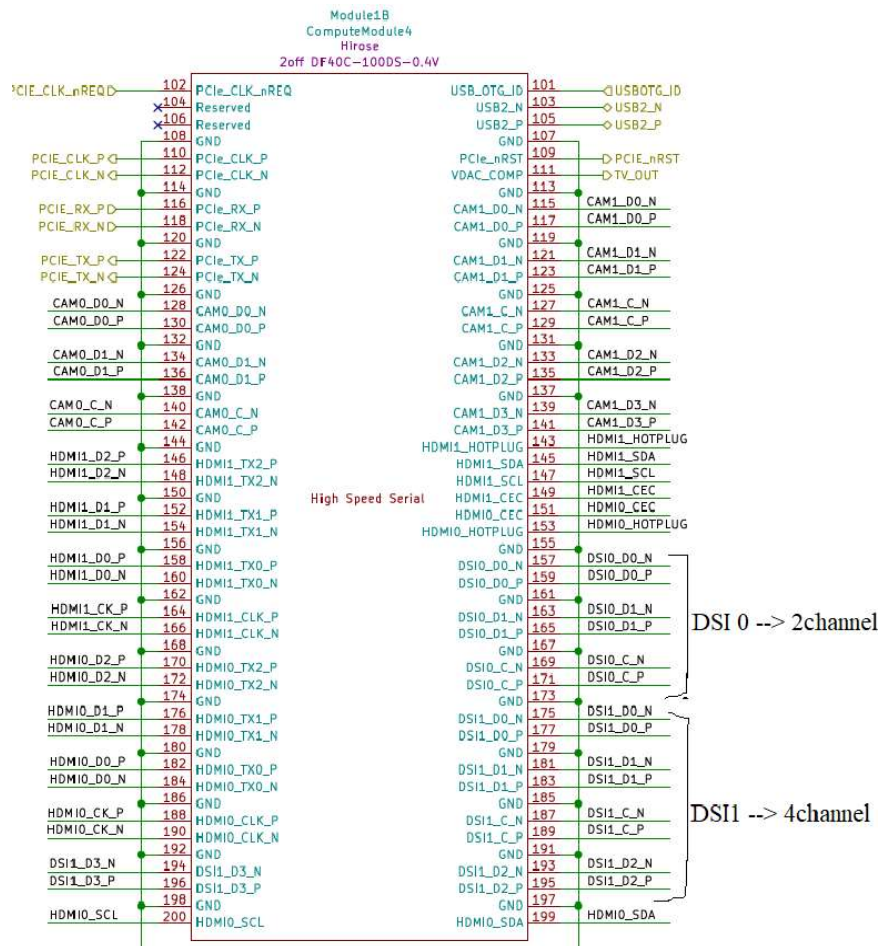
Dual DSI display connectors (22-pin 0.5mm pitch cable)

Both DSI interfaces (2-channel and 4-channel) are brought out to separate 22-way 0.5mm pitch connectors. These connectors are the same as on the existing CMIO board; note that they are different from Raspberry Pi 4 Model B. If the DSI0 interface (2-channel) is used, then the two jumpers on J6 must be fitted to route the I2C bus to the connector.

CM4 has 2 display interfaces.

DSI0 → 2Channel

DSI1 → 4 Channel



Dialtronics requirements



Fig2: 2x15 2mm Male Burgstrip

This connector will be populated on Dialtronics Custom CM4 I/O Board.

Dialtronics uses the connector and cable as shown in Fig2, Fig3.

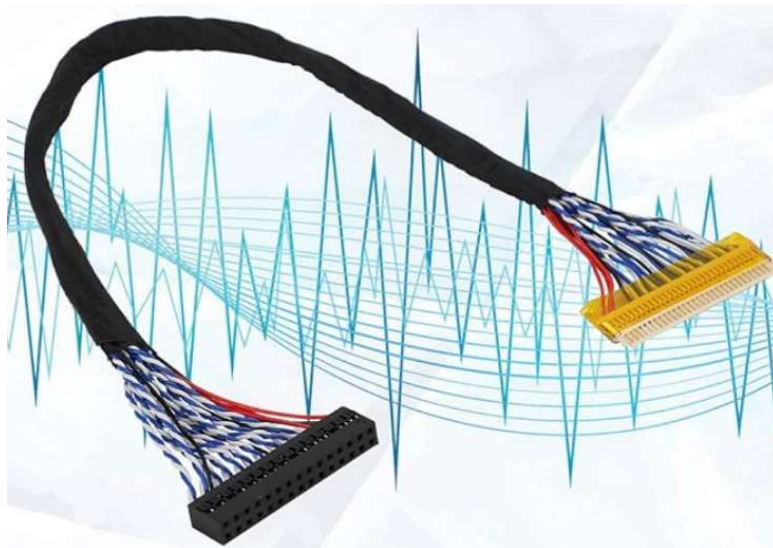
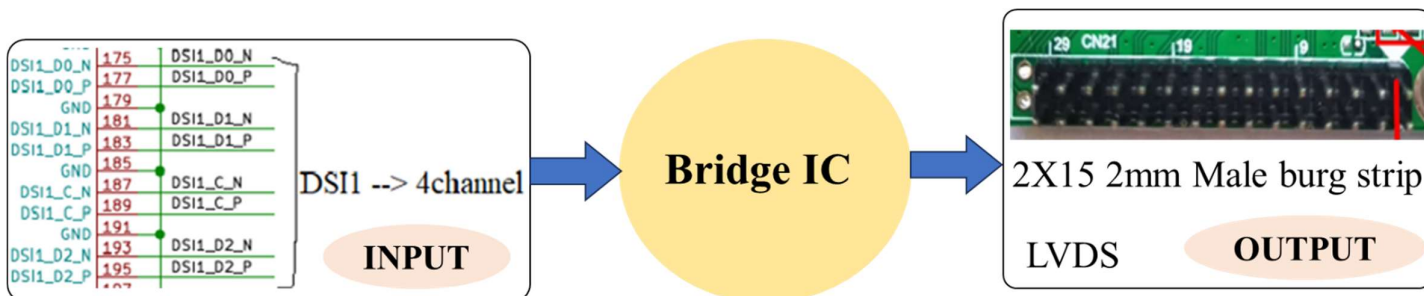
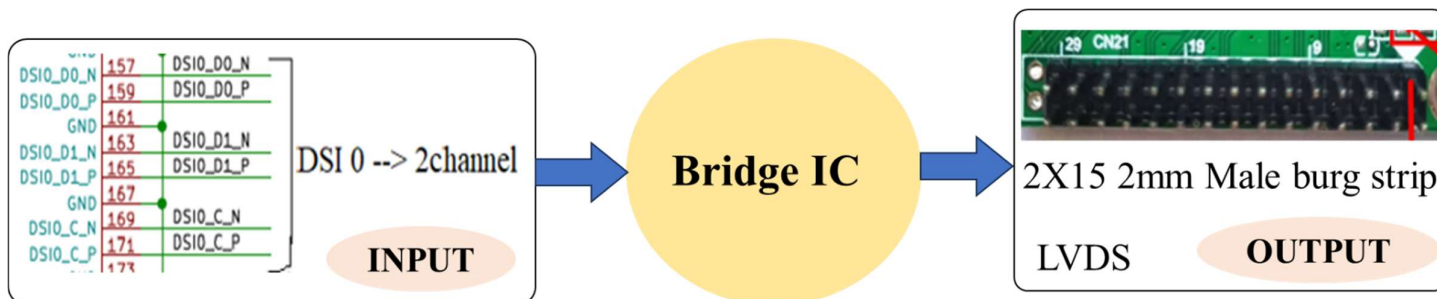


Fig3: 30Pin LVDS Cable

This cable will be connected between Dialtronics Custom CM4 I/O Board and the LVDS display.



Suggest a Bridge IC that can convert 4 Channel MIPI DSI to LVDS.



Suggest a Bridge IC that can convert 2 Channel MIPI DSI to LVDS.