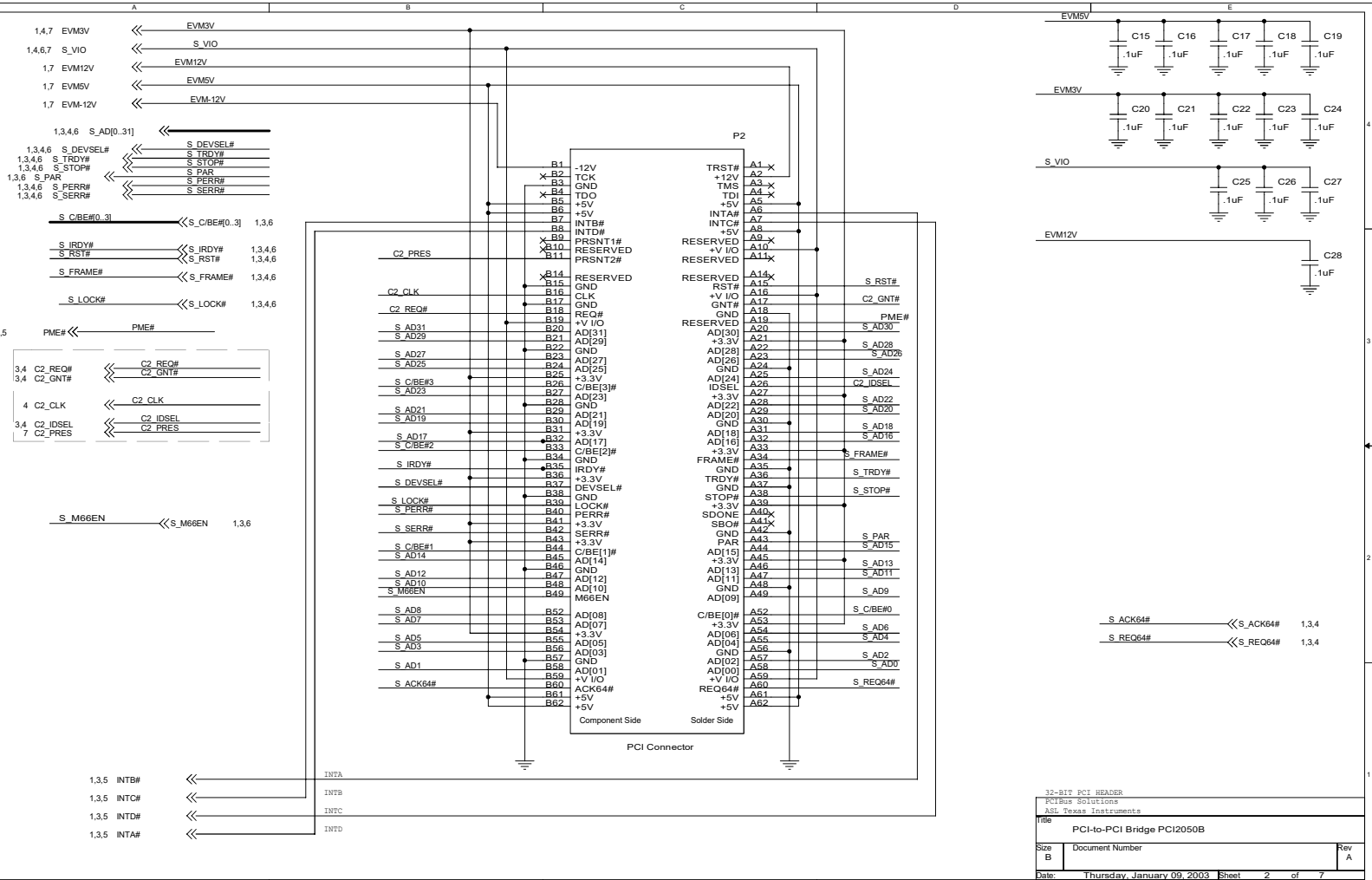


12-BIT PCI HEADER
PCIBus Solutions
ASL Texas Instruments

Title		
PCI-to-PCI Bridge PCI2050B		
Size	Document Number	Rev
B		A
Date: Thursday, January 09, 2003 Sheet 1 of 7		



32-BIT PCI HEADER
 PCIbus Solutions
 ASI Texas Instruments

Title: PCI-to-PCI Bridge PCI2050B

Size B	Document Number	Rev A
--------	-----------------	-------

Date: Thursday, January 09, 2003 Sheet 2 of 7

MC1			
X 4	NC1	NC2	2 X
3	GND	NC4	4 X
X 5	CLKe	CLKo	6 X
S_AD31	D15e	D15o	8 S_AD15
S_AD30	D14e	D14o	10 S_AD14
S_AD29	D13e	D13o	12 S_AD13
S_AD28	D12e	D12o	14 S_AD12
S_AD27	D11e	D11o	16 S_AD11
S_AD26	D10e	D10o	18 S_AD10
S_AD25	D9e	D9o	20 S_AD9
S_AD24	D8e	D8o	22 S_AD8
S_AD23	D7e	D7o	24 S_AD7
S_AD22	D6e	D6o	26 S_AD6
S_AD21	D5e	D5o	28 S_AD5
S_AD20	D4e	D4o	30 S_AD4
S_AD19	D3e	D3o	32 S_AD3
S_AD18	D2e	D2o	34 S_AD2
S_AD17	D1e	D1o	36 S_AD1
S_AD16	D0e	D0o	38 S_AD0

MICTOR CONNECTOR
Note: 5 thru-holes are GNDs

MC2			
X 4	NC1	NC2	2 X
3	GND	NC4	4 X
X 5	CLKe	CLKo	6 X
S_LOCK#	D15e	D15o	8 HSENUM#
GPIO3	D14e	D14o	10 X
HSENUM#	D13e	D13o	12 INTD#
S_M66EN	D12e	D12o	14 INTB#
S_TRDY#	D11e	D11o	16 INTA#
C2_REQ#	D10e	D10o	18 S_RST#
S_IRDY#	D9e	D9o	22 S_CBE#3
S_FRAME#	D8e	D8o	24 S_CBE#2
C2_GNT#	D7e	D7o	26 S_CBE#1
C2_IDSEL	D6e	D6o	28 S_CBE#0
C1_REQ#	D5e	D5o	30 S_DEVSEL#
C1_GNT#	D4e	D4o	32 S_STOP#
C1_IDSEL	D3e	D3o	34 S_PERR#
S_ACK64#	D2e	D2o	36 S_SERR#
S_REQ64#	D1e	D1o	38 S_PAR

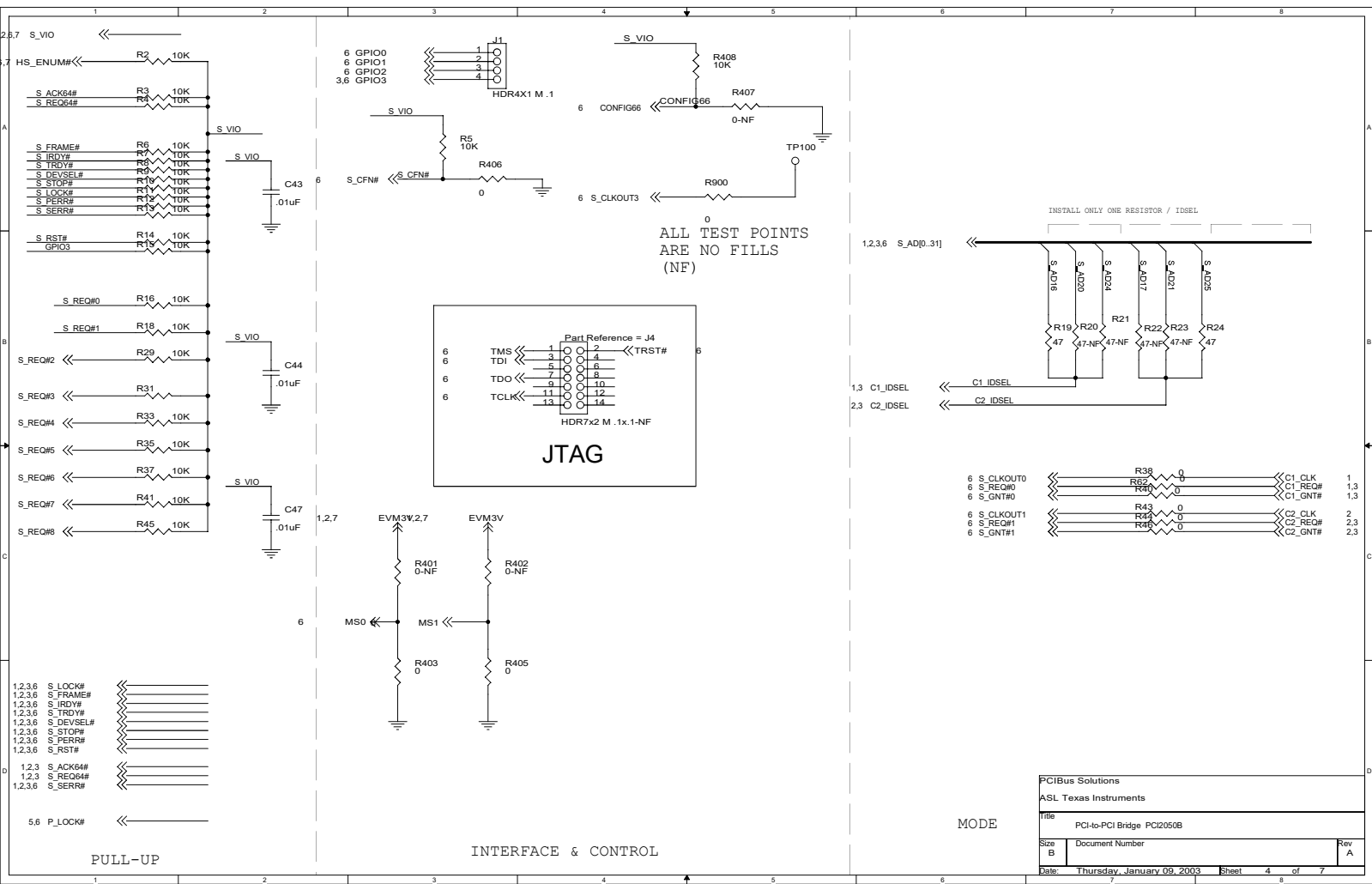
MICTOR CONNECTOR
Note: 5 thru-holes are GNDs

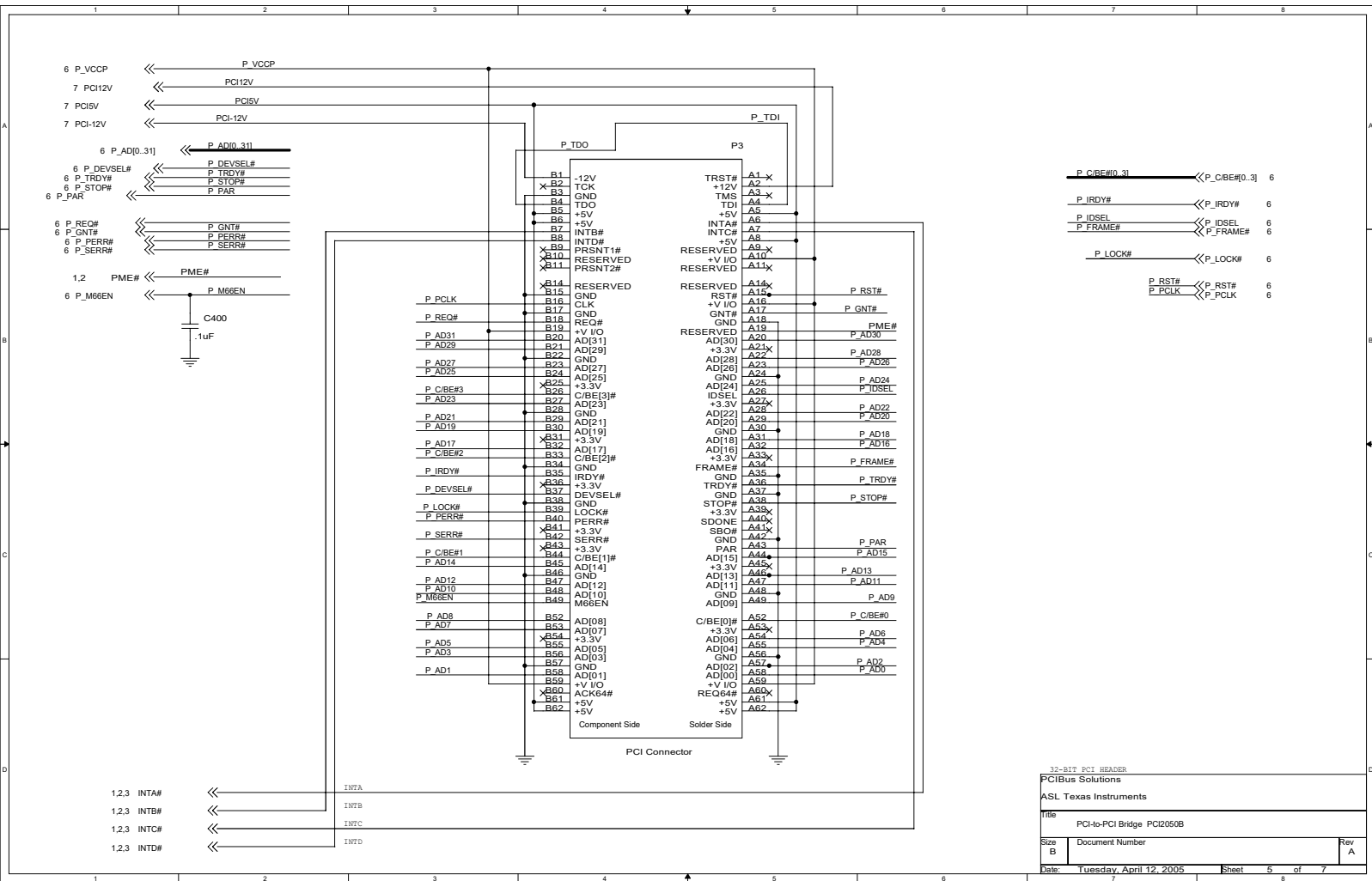
- S_AD0..31 << S_AD[0..31] 1,2,4,6
- S_CBE#0..31 << S_C/BE#[0..31] 1,2,6
- S_RST# 1,2,4,6
- S_FRAME# 1,2,4,6
- S_IRDY# 1,2,4,6
- S_PERR# 1,2,4,6
- S_SERR# 1,2,4,6
- S_DEVSEL# 1,2,4,6
- S_PAR 1,2,6
- S_TRDY# 1,2,4,6
- S_STOP# 1,2,4,6
- C1_IDSEL 1,4
- C1_REQ# 1,4
- C1_GNT# 1,4
- C2_IDSEL 2,4
- C2_REQ# 2,4
- C2_GNT# 2,4

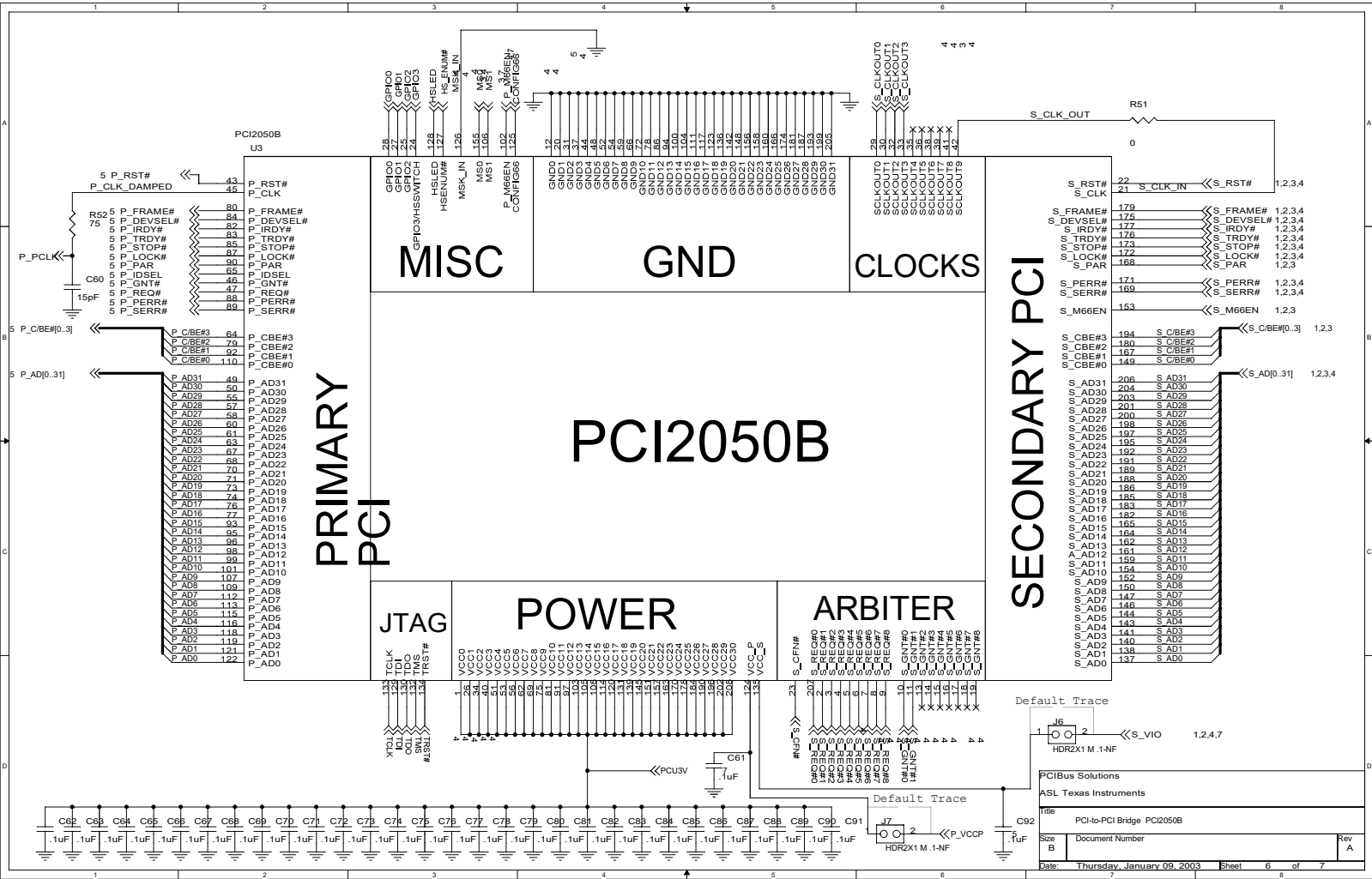
- R1 << S_CLKOUT2 6
- 0 << INTA# 1,2,5
- << INTB# 1,2,5
- << INT# 1,2,5
- << INTD# 1,2,5
- << S_REQ64# 1,2,4
- << S_ACK64# 1,2,4
- << S_M66EN 1,2,6
- << HSENUM# 4,6
- << GPIO3 4,6
- << S_LOCK# 1,2,4,6
- << HSLED 6,7
- << HSENUM#

HP CONNECTION
PCIBus Solutions
ASL Texas Instruments

Title		PCI-to-PCI Bridge PCI2050B
Size	Document Number	Rev
B		A
Date:	Thursday, January 09, 2003	Sheet 3 of 7







**PRIMARY
PCI**

SECONDARY PCI

PCI2050B

MISC

GND

CLOCKS

JTAG

POWER

ARBITER

- 5 P_RST# 43
- P_CLK_DAMPED 45
- 5 P_FRAME# 80
- P_DEVSEL# 84
- 5 P_TRDY# 83
- 5 P_STOP# 85
- 5 P_LOCK# 87
- 5 P_PAR# 90
- 5 P_IDSEL 65
- 5 P_REQ# 47
- 5 P_GNT# 46
- 5 P_PERR# 88
- 5 P_SERR# 89
- P_CBE#3 64
- P_CBE#2 79
- P_CBE#1 92
- P_CBE#0 110
- P_AD31 49
- P_AD30 50
- P_AD29 55
- P_AD28 57
- P_AD27 58
- P_AD26 60
- P_AD25 61
- P_AD24 63
- P_AD23 67
- P_AD22 68
- P_AD21 70
- P_AD20 71
- P_AD19 73
- P_AD18 74
- P_AD17 76
- P_AD16 77
- P_AD15 93
- P_AD14 95
- P_AD13 96
- P_AD12 98
- P_AD11 99
- P_AD10 101
- P_AD9 107
- P_AD8 109
- P_AD7 112
- P_AD6 113
- P_AD5 115
- P_AD4 116
- P_AD3 118
- P_AD2 119
- P_AD1 121
- P_AD0 122

- C62 .1uF
- C63 .1uF
- C64 .1uF
- C65 .1uF
- C66 .1uF
- C67 .1uF
- C68 .1uF
- C69 .1uF
- C70 .1uF
- C71 .1uF
- C72 .1uF
- C73 .1uF
- C74 .1uF
- C75 .1uF
- C76 .1uF
- C77 .1uF
- C78 .1uF
- C79 .1uF
- C80 .1uF
- C81 .1uF
- C82 .1uF
- C83 .1uF
- C84 .1uF
- C85 .1uF
- C86 .1uF
- C87 .1uF
- C88 .1uF
- C89 .1uF
- C90 .1uF
- C91 .1uF
- C92 .1uF

- S_RST# 22
- S_CLK 21
- S_CLK_IN 21
- S_FRAME# 179
- S_DEVSEL# 175
- S_TRDY# 177
- S_STOP# 176
- S_LOCK# 172
- S_PAR 168
- S_PERR# 171
- S_SERR# 169
- S_M66EN 153
- S_CBE#3 194
- S_CBE#2 180
- S_CBE#1 167
- S_CBE#0 149
- S_AD31 206
- S_AD30 204
- S_AD29 203
- S_AD28 201
- S_AD27 200
- S_AD26 198
- S_AD25 197
- S_AD24 195
- S_AD23 192
- S_AD22 191
- S_AD21 189
- S_AD20 188
- S_AD19 186
- S_AD18 185
- S_AD17 183
- S_AD16 182
- S_AD15 165
- S_AD14 164
- S_AD13 162
- S_AD12 161
- S_AD11 159
- S_AD10 154
- S_AD9 152
- S_AD8 150
- S_AD7 147
- S_AD6 146
- S_AD5 144
- S_AD4 143
- S_AD3 141
- S_AD2 140
- S_AD1 138
- S_AD0 137

- GPIOC0 28
- GPIOC1 27
- GPIOC2 25
- GPIOC3 24
- HSLELED 128
- HSLENUM# 127
- MSK_IN 126
- MS0 155
- MS1 108
- MS2 107
- MS3 106
- MS4 105
- MS5 104
- MS6 103
- MS7 102
- MS8 101
- MS9 100
- MS10 99
- MS11 98
- MS12 97
- MS13 96
- MS14 95
- MS15 94
- MS16 93
- MS17 92
- MS18 91
- MS19 90
- MS20 89
- MS21 88
- MS22 87
- MS23 86
- MS24 85
- MS25 84
- MS26 83
- MS27 82
- MS28 81
- MS29 80
- MS30 79
- MS31 78
- MS32 77
- MS33 76
- MS34 75
- MS35 74
- MS36 73
- MS37 72
- MS38 71
- MS39 70
- MS40 69
- MS41 68
- MS42 67
- MS43 66
- MS44 65
- MS45 64
- MS46 63
- MS47 62
- MS48 61
- MS49 60
- MS50 59
- MS51 58
- MS52 57
- MS53 56
- MS54 55
- MS55 54
- MS56 53
- MS57 52
- MS58 51
- MS59 50
- MS60 49
- MS61 48
- MS62 47
- MS63 46
- MS64 45
- MS65 44
- MS66 43
- MS67 42
- MS68 41
- MS69 40
- MS70 39
- MS71 38
- MS72 37
- MS73 36
- MS74 35
- MS75 34
- MS76 33
- MS77 32
- MS78 31
- MS79 30
- MS80 29
- MS81 28
- MS82 27
- MS83 26
- MS84 25
- MS85 24
- MS86 23
- MS87 22
- MS88 21
- MS89 20
- MS90 19
- MS91 18
- MS92 17
- MS93 16
- MS94 15
- MS95 14
- MS96 13
- MS97 12
- MS98 11
- MS99 10
- MS100 9
- MS101 8
- MS102 7
- MS103 6
- MS104 5
- MS105 4
- MS106 3
- MS107 2
- MS108 1

- S_CLK_OUT R51
- S_RST# 22
- S_CLK 21
- S_CLK_IN 21
- S_FRAME# 179
- S_DEVSEL# 175
- S_TRDY# 177
- S_STOP# 176
- S_LOCK# 172
- S_PAR 168
- S_PERR# 171
- S_SERR# 169
- S_M66EN 153
- S_CBE#3 194
- S_CBE#2 180
- S_CBE#1 167
- S_CBE#0 149
- S_AD31 206
- S_AD30 204
- S_AD29 203
- S_AD28 201
- S_AD27 200
- S_AD26 198
- S_AD25 197
- S_AD24 195
- S_AD23 192
- S_AD22 191
- S_AD21 189
- S_AD20 188
- S_AD19 186
- S_AD18 185
- S_AD17 183
- S_AD16 182
- S_AD15 165
- S_AD14 164
- S_AD13 162
- S_AD12 161
- S_AD11 159
- S_AD10 154
- S_AD9 152
- S_AD8 150
- S_AD7 147
- S_AD6 146
- S_AD5 144
- S_AD4 143
- S_AD3 141
- S_AD2 140
- S_AD1 138
- S_AD0 137

