

TI SN65LVCP1414 IBIS-AMI Models

User's Guide

Version 00.01.00

October 2012

Copyright © 2009, Texas Instruments Incorporated. All rights reserved.

The information and/or drawings set forth in this document and all rights in and to inventions disclosed herein and patents which might be granted thereon disclosing or employing the materials, methods, techniques, or apparatus described herein are the exclusive property of Texas Instruments. No disclosure of information or drawings shall be made to any other person or organization without the prior consent of Texas Instruments.

Texas Instruments Proprietary Information

Disclaimer

Texas Instruments Incorporated and its subsidiaries (TI) reserve the right to make corrections, modifications, enhancements, improvements, and other changes to its products and services at any time and to discontinue any product or service without notice. Customers should obtain the latest relevant information before placing orders and should verify that such information is current and complete. All products are sold subject to TI's terms and conditions of sale supplied at the time of order acknowledgment.

TI warrants performance of its hardware products to the specifications applicable at the time of sale in accordance with TI's standard warranty. Testing and other quality control techniques are used to the extent TI deems necessary to support this warranty. Except where mandated by government requirements, testing of all parameters of each product is not necessarily performed.

TI assumes no liability for applications assistance or customer product design. Customers are responsible for their products and applications using TI components. To minimize the risks associated with customer products and applications, customers should provide adequate design and operating safeguards.

TI does not warrant or represent that any license, either express or implied, is granted under any TI patent right, copyright, mask work right, or other TI intellectual property right relating to any combination, machine, or process in which TI products or services are used. Information published by TI regarding third-party products or services does not constitute a license from TI to use such products or services or a warranty or endorsement thereof. Use of such information may require a license from a third party under the patents or other intellectual property of the third party, or a license from TI under the patents or other intellectual property of TI.

Reproduction of information in TI data books or data sheets is permissible only if reproduction is without alteration and is accompanied by all associated warranties, conditions, limitations, and notices. Reproduction of this information with alteration is an unfair and deceptive business practice. TI is not responsible or liable for such altered documentation.

Resale of TI products or services with statements different from or beyond the parameters stated by TI for that product or service voids all express and any implied warranties for the associated TI product or service and is an unfair and deceptive business practice. TI is not responsible or liable for any such statements.

TI is a trademark of Texas Instruments Incorporated.

© 20, Texas Instruments Incorporated. All rights reserved.

Table of Contents

1	Introduction	4
1.1	Formatting Conventions.....	4
1.2	Charter of the SerDes IBIS-AMI models	4
1.3	Is / Is Not Table	4
2	About this Release	5
2.1	IBIS-AMI Model Files	5
2.2	RX AMI model specific parameters.....	6
3	Model Verification	7
3.1	SiSoft Quantum Channel Designer (QCD) User's Guide	7
4	Model Caveats	13

1 Introduction

This document describes the organization, structure, and proper usage of the TI SN65LVCP1414 IBIS-AMI models (compiled and approved for external customer release), hereafter referred to as the “model” for short. The model is intended for use by the SN65LVCP1414 design team and by SN65LVCP1414 customers for system-level modeling and verification. This document assumes that you are familiar with the relevant IBIS-AMI modeling specifications.

1.1 Formatting Conventions

The help readability, various formatting conventions are used throughout this document:

- Hyperlinks to material within and outside this document are marked in [blue](#).
- Courier font is used for file names, code, variables, structures, parameters, and terminal commands.

1.2 Charter of the SerDes IBIS-AMI models

The models are designed in accordance with the [IBIS-AMI standard](#) and attempt to model the significant characteristics of most components in the SN65LVCP1414. The models are not intended to be an exact representation of SN65LVCP1414 components implemented. Rather, the models seek to provide as high a degree of accuracy as is feasible outside of Spice-based models and simulations.

1.3 Is / Is Not Table

The following table describes the features and purposes of the models, as well as the limitations of the models.

Table 1: Model Is / Is Not Table

Is	Is Not
Compiled for 32-bit AMI EDA tool that run in Windows platform	Compiled for any other platform (i.e. 32- or 64-bit Linux)
Compliant to IBIS-AMI 5.0	Compliant to a more recent BIRD revisions, if they exist
Model of SN65LVCP1414 functionality, non-idealities, and performance	Exact representation of implemented components

The TI IBIS-AMI models contain information on products that is based on high-level specifications. These may not accurately represent the product design in all cases. Please verify the accuracy of the models with TI before using the results.

2 About this Release

2.1 IBIS-AMI Model Files

Table 2 shows the key IBIS-AMI model files delivered with the model release as part of the compressed archive.

Table 2: IBIS-AMI files included with the model release

File Name	Type	Description
TI_SN65LVCP1414_AMI_users_guide.pdf	PDF	TI SN65LVCP1414 AMI model user's guide.
sn65lvcp1414.ibs	IBIS	Top-level IBIS wrapper for the Tx and Rx AMI model.
sn65lvcp1414.ami	AMI	Parameters file for the Rx model as required by the IBIS-AMI standard. This is a text file which is common for all OS/execution platforms.
sn65lvcp114.dll	DLL	Windows 32-bit compiled shared library for the Rx model. This shared library includes the AMI_Init, AMI_GetWave, and AMI_Close functions defined in the IBIS-AMI standard.
sn65lvcp1414_rxterm.s2p sn65lvcp1414_rxterm.s4p	s-parameter	Termination at the receiver's input. This s2p/s4p should be connected directly to the input of the device after the receiver package. It is recommended to use s2p for receiver termination if EDA tool can handle s2p, otherwise, please use the s4p for the receiver termination.
sn65lvcp1414_rx_pkg.s4p	s-parameter	Receiver package
sn65lvcp1414_tx_pkg.s4p	s-parameter	Transmitter packages

The TI IBIS-AMI models contain information on products that is based on high-level specifications. These may not accurately represent the product design in all cases. Please verify the accuracy of the models with TI before using the results.

2.2 RX AMI model specific parameters

The following settings correspond to the following values for this model.

Table 3. Parameters for SN65LVCP1414

vod	0 = low vod setting 1 = high vod setting
dcgain	0 = low dc gain setting (-6dB) 1 = high dc gain setting (0dB)
acgain	If dcgain = 0 acgain = 0 actual acgain is 0 acgain = 1 actual acgain is 11 if dcgain = 1 acgain = 0 actual acgain is 1 acgain = 1 actual acgain is 11
EQ	0 to 7. Please refer to datasheet page 15 for level of gain
cable	0 = trace mode 1 = cable mode

3 Model Verification

This model had been through detail verification and correlation processes. There are three project kits included in this release package for QCD, Hyperlynx, and ADS. User can use these project kits as the foundation and start building their system by adding more complex structure to it.

3.1 SiSoft Quantum Channel Designer (QCD) User's Guide

The following are steps specific to SiSoft Quantum Channel Designer (QCD).

1. Open the installation archive using the winzip utility in Windows.
2. Create a project

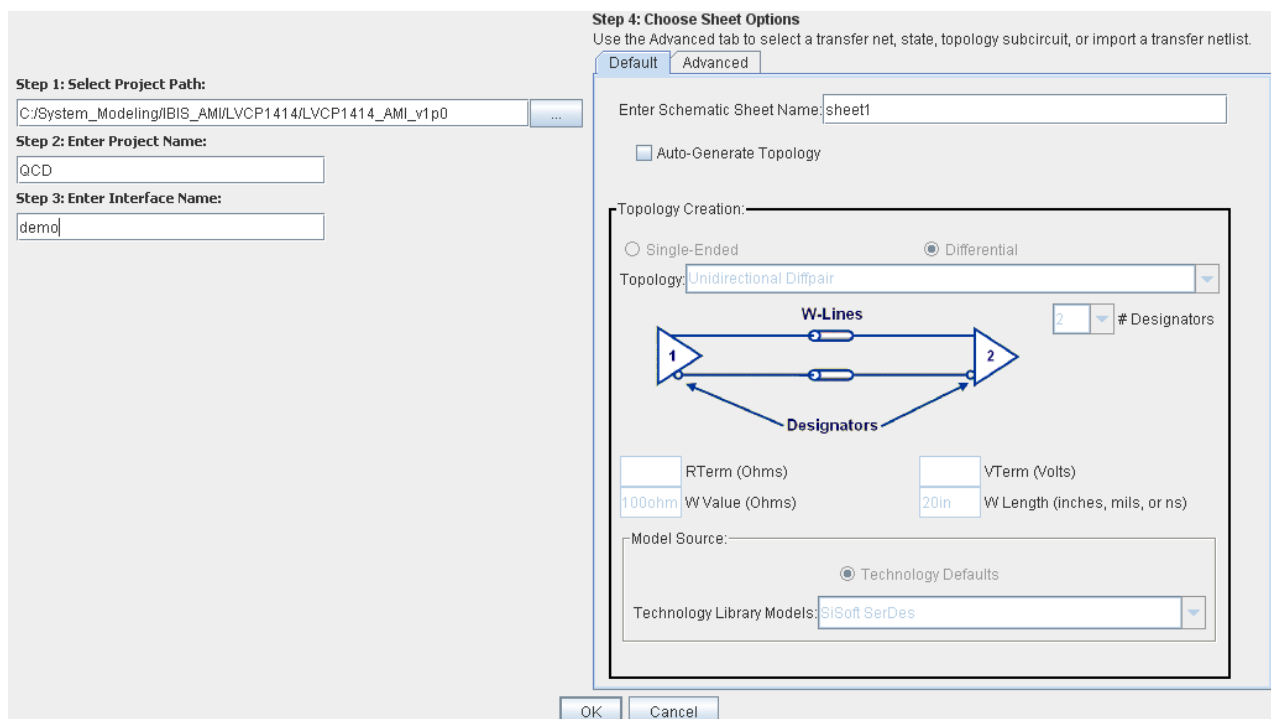


Figure 1. Create a project

3. In QCD, import the IBIS files (sn65lvcp1414.ibs).

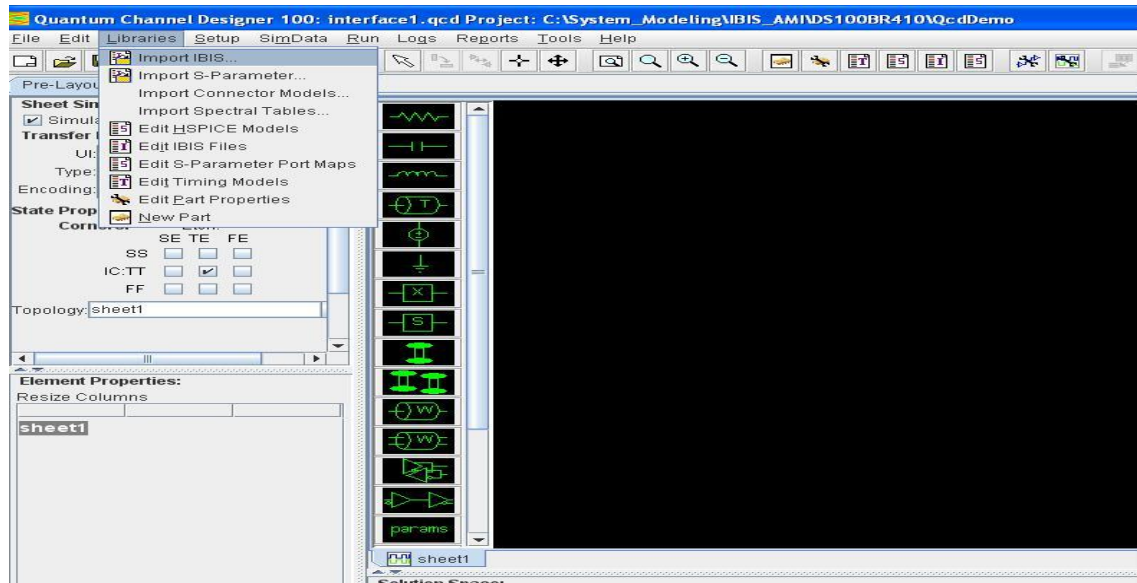


Figure 2. Import IBIS file

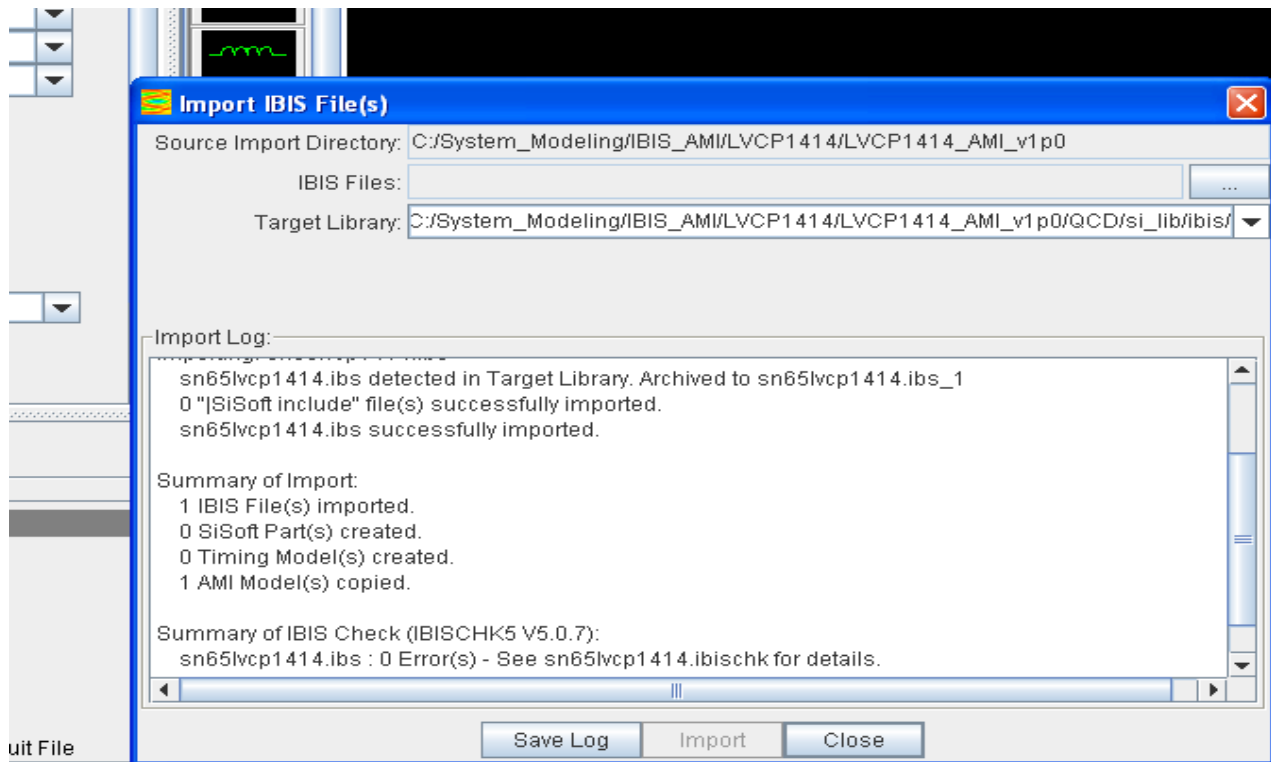


Figure 3. IBIS file successfully imported

The TI IBIS-AMI models contain information on products that is based on high-level specifications. These may not accurately represent the product design in all cases. Please verify the accuracy of the models with TI before using the results.

4. Import the s-parameter files for channel.
 - a. At this point, the .dll, .ibs, and .ami files have been copied to your project folder, in the si_lib/ibis/ sub-directory.

5. Add TX and RX buffer symbols on the sheet

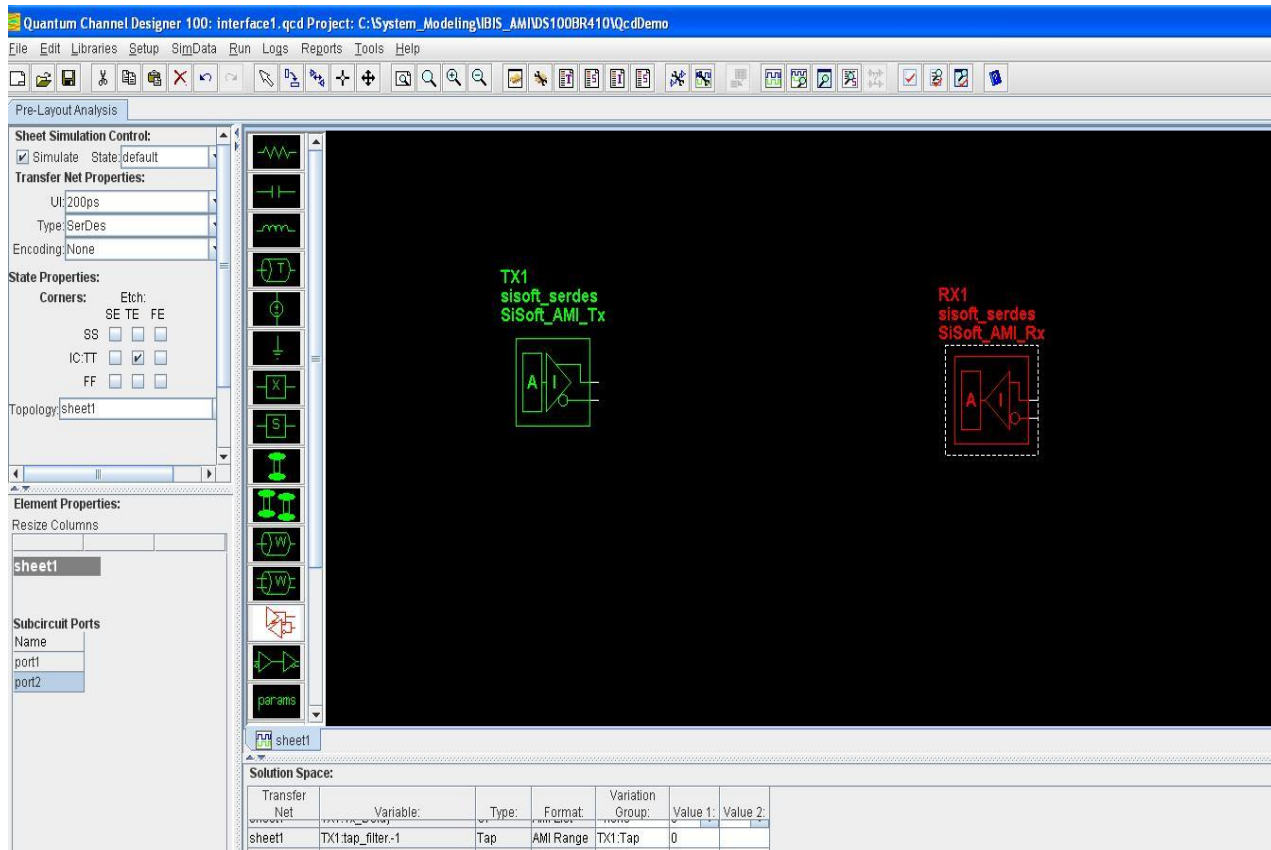


Figure 4. Insert TX and RX buffers

6. Instantiate the sn65lvcp1414 RX by right clicking on the RX symbol, and then clicking on Select IBIS File & Model. Also instantiate a transmitter to drive the sn65lvcp1414.

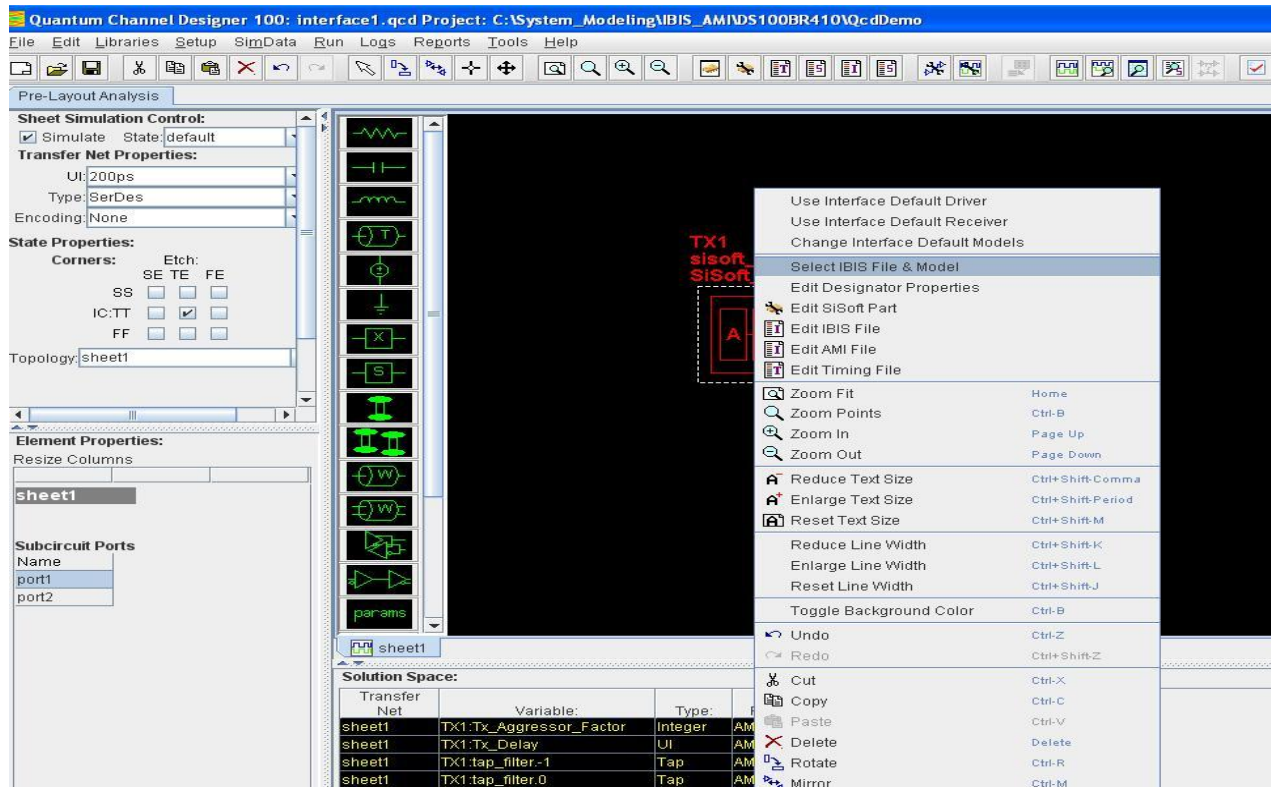


Figure 5. Instantiate Sisoft ideal TX and sn65lvcp1414 RX model

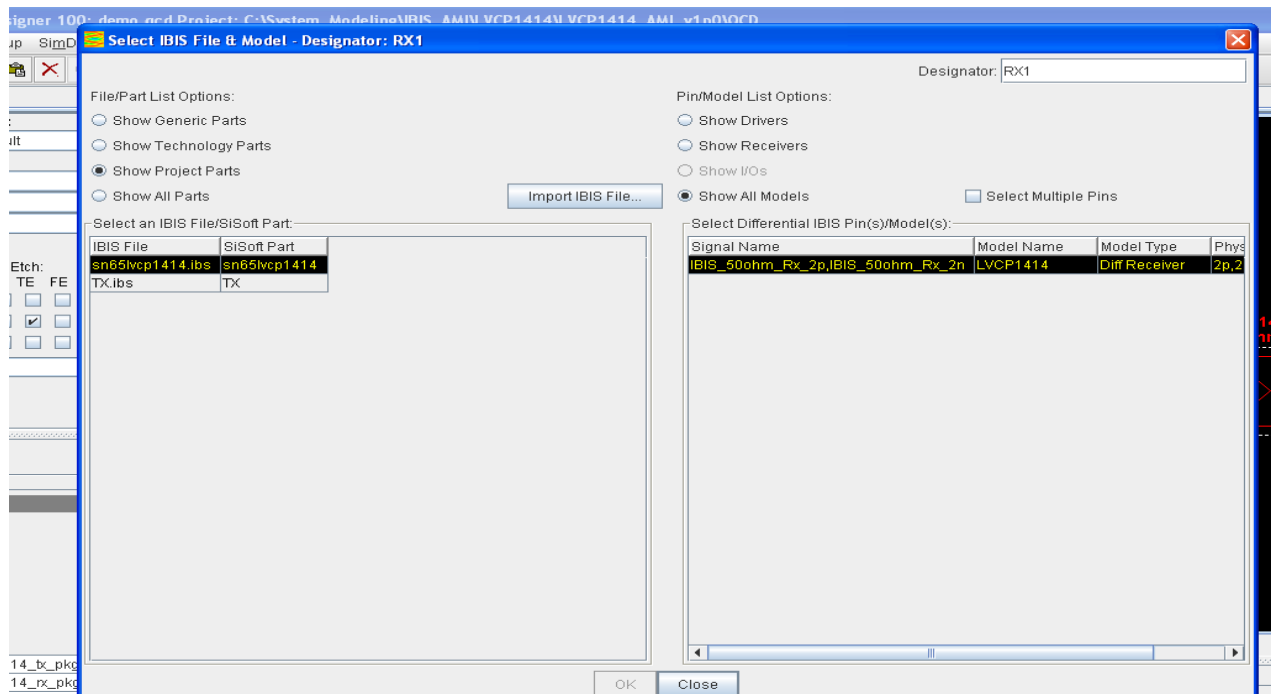


Figure 6. Choose sn65lvcp1414 for RX

The TI IBIS-AMI models contain information on products that is based on high-level specifications. These may not accurately represent the product design in all cases. Please verify the accuracy of the models with TI before using the results.

7. The complete schematic for this demo. As shown in the schematic a return loss s-parameter is connected to the input of the receiver. This

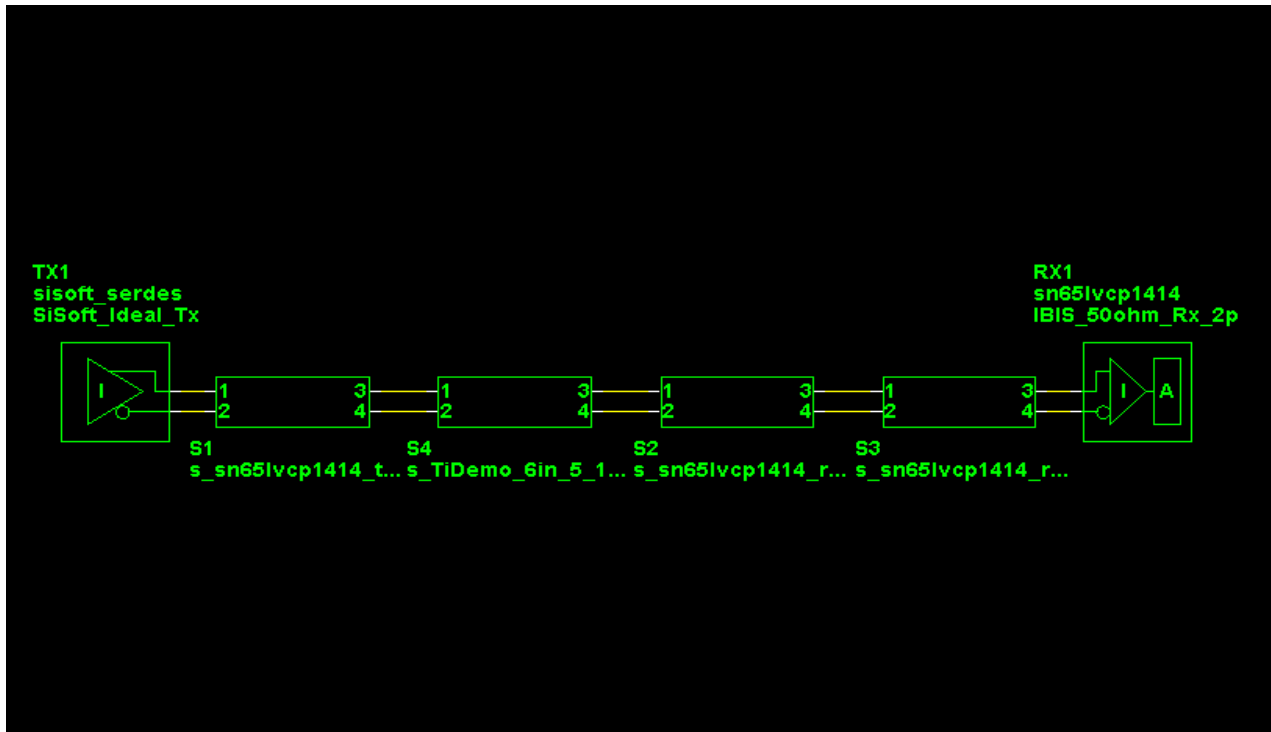


Figure 7. Complete schematic to verify sn65lvcp1414

8. Setup up simulation parameters

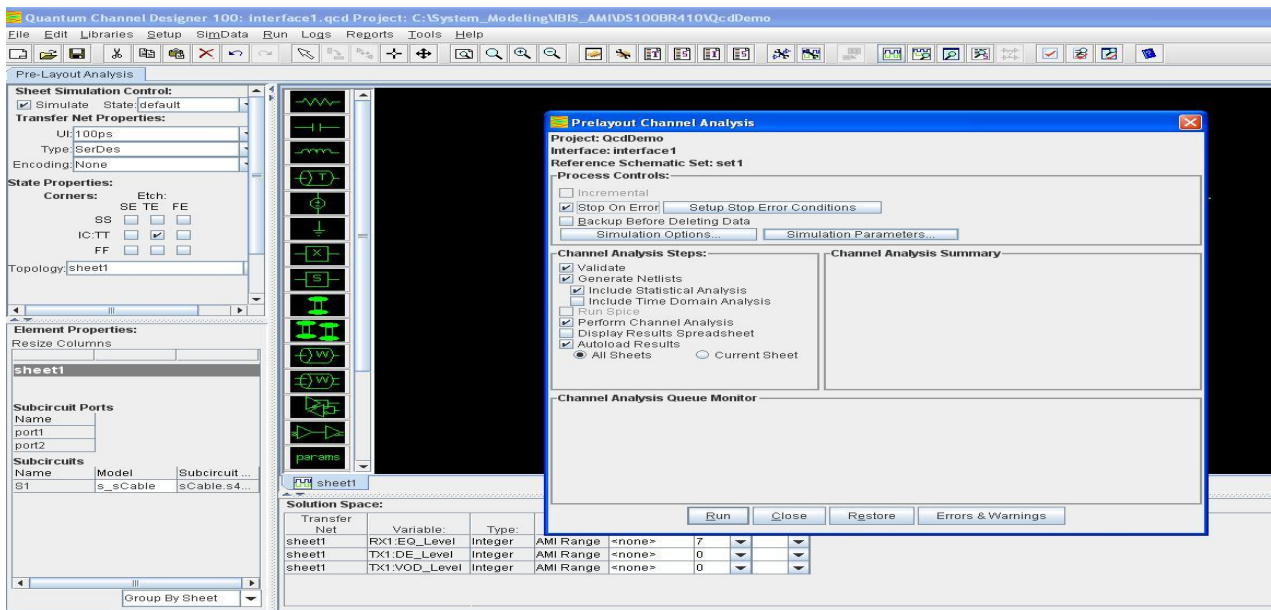


Figure 8. Click on the Simulation Parameter button to properly setup the parameters

The TI IBIS-AMI models contain information on products that is based on high-level specifications. These may not accurately represent the product design in all cases. Please verify the accuracy of the models with TI before using the results.

Simulation Parameters

Parameter	Type	Restriction	Value	Network Characterization	Statistical	Time Domain	QCD	Spice	User Supplied Waveform
Samples Per Bit	Integer	List	16	X	X	X	X		
Max Channel Delay	Float	Range	20ns	X	X	X	X		
Target BER	Float	Range	1e-12		X	X	X		
Minimum Ignore Bits	Float	Range	100UI			X	X		
Max Input Frequency	Float	Range	0Hz	X			X		
Record Start	Float	Range	972,500UI			X	X		
Record Stop	Float	Range	1,000,000UI			X	X		
Time Domain Stop	Float	Range	1,000,000UI			X	X		
Block Size	Float	Range	32,000	X	X	X	X		
Clock Mode	String	List	Normal			X	X		
Output Clock Ticks	String	List	No				X		
Time Domain Statistical Extrapolation	String	List	No				X		
Time Domain Crosstalk Mode	String	List	Semi_Analytic			X	X		
Enforce Passivity	String	List	No	X			X		
Spice Rise Time	Float	Range	10ps	X		X		X	
Spice Sample Interval	Float	Range	10ps	X		X		X	
Spice Buffer Models	String	List	IBIS/Spice	X		X		X	
Spice Ignore Bits	Float	Range	0UI	X				X	
Spice Step Stop	Float	Range	50UI	X				X	
Spice Time Domain Stop	Float	Range	500UI			X		X	
Max Output Frequency	Float	Range	10GHz	X			X		
S Param Frequency Step	Float	Range	50MHz	X			X		
Include IBIS Package	String	List	Yes	X			X		
Conductor Roughness	Float	Range	0.15	X	X	X	X		
NC/TD Simulation Mode	String	List	Prefer_Native/Native	X		X	X	X	

Set Parameters and Values to Installation Defaults

Set All Sheets to Interface Values

Explain Parameter...

Interface

sheet1

☐ Set By Sheet

OK

Close

Figure 9. Setup the simulation parameters

9. Run the simulation.

The TI IBIS-AMI models contain information on products that is based on high-level specifications. These may not accurately represent the product design in all cases. Please verify the accuracy of the models with TI before using the results.

4 Model Caveats

The model has the following limitations and known issues:

- This is an Equalizer model and hence it does not generate clock tick. Users that simulate this model as serial link is responsible to verify the capability of an EDA tool to regenerate the RX eye without clock tick.
- This model is compiled for 32bit AMI EDA tools. One can possibly run this model on a 64bit Windows machine by installing 32bit AMI EDA tools on the 64bit Windows machine