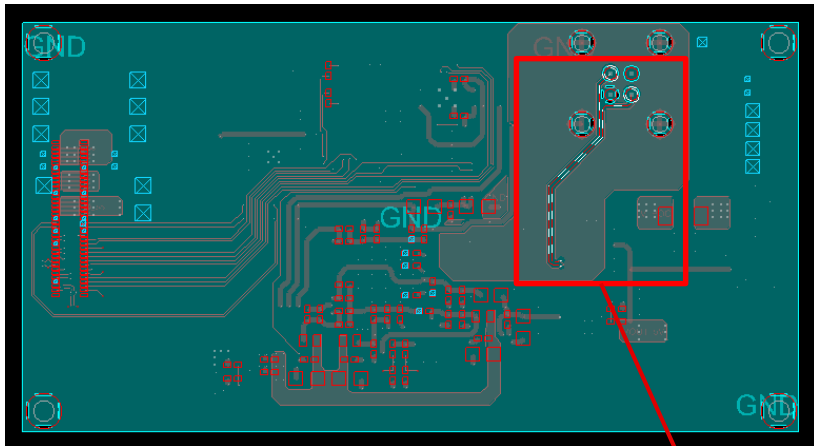
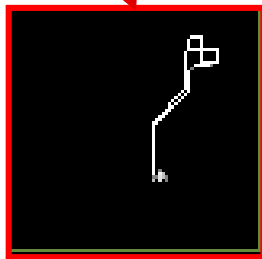


TN302_941 Layout Review

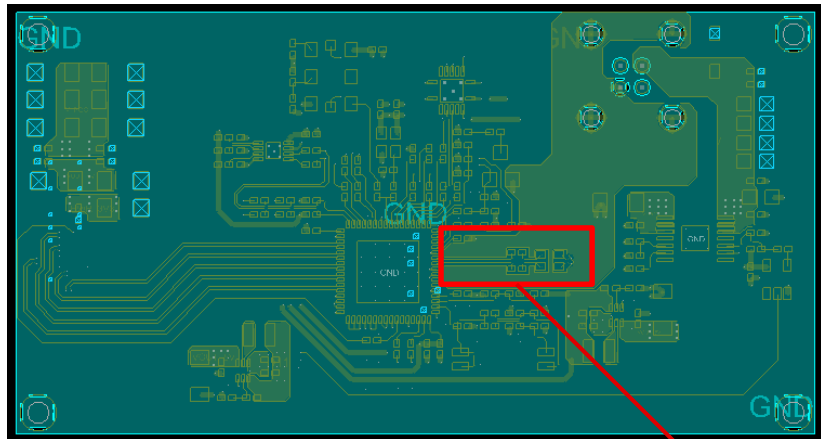
Comments/Suggestions



FPD-Link III Signal Trace Dout0+/-
Recommend keeping intra-pair length mismatch
to <5 mils if possible

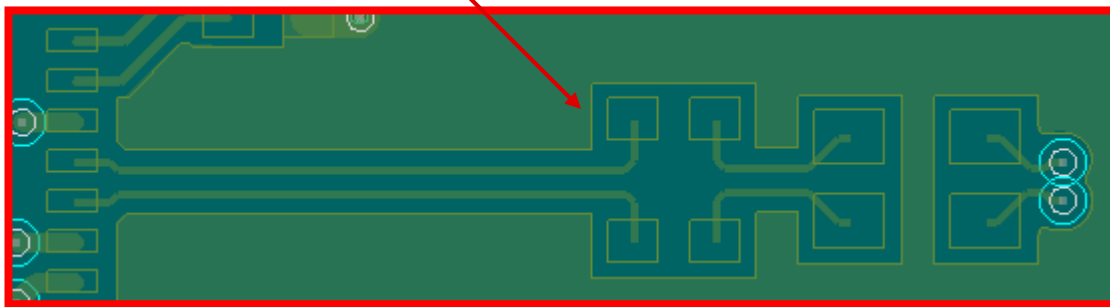


Comments/Suggestions

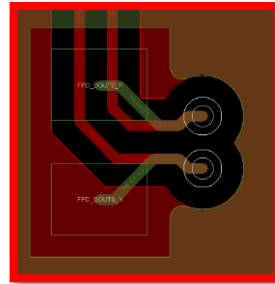
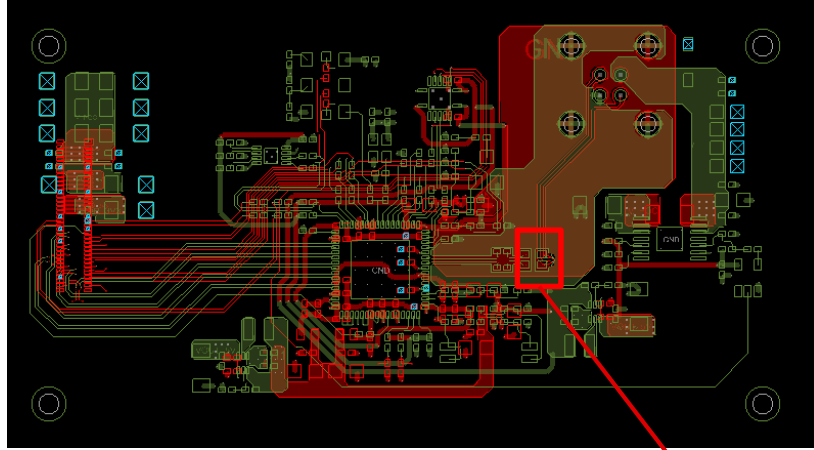


FPD-Link III Signal Trace Dout0+/- AC Cap

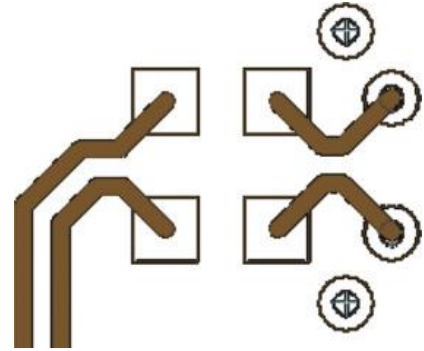
An impedance mismatch can occur with the addition of the component landing pads. We recommend doing impedance calculation to ensure the 100 Ohm differential impedance along the trace. Relief cuts to the below GND layer can help with impedance control.



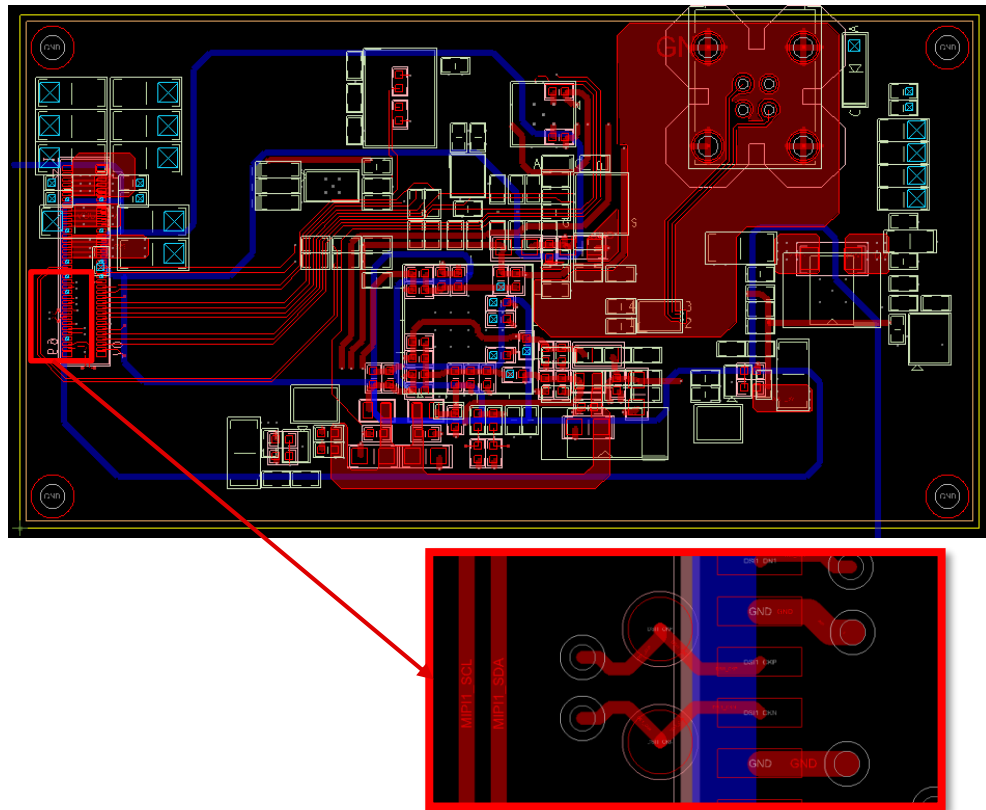
Comments/Suggestions



Recommend adding differential vias for impedance continuity across layers



Comments/Suggestions



Keep the use of bends in differential traces to a minimum. When bends are used, the number of left and right bends must be as equal as possible, and the angle of the bend should be ≥ 135 degrees.