
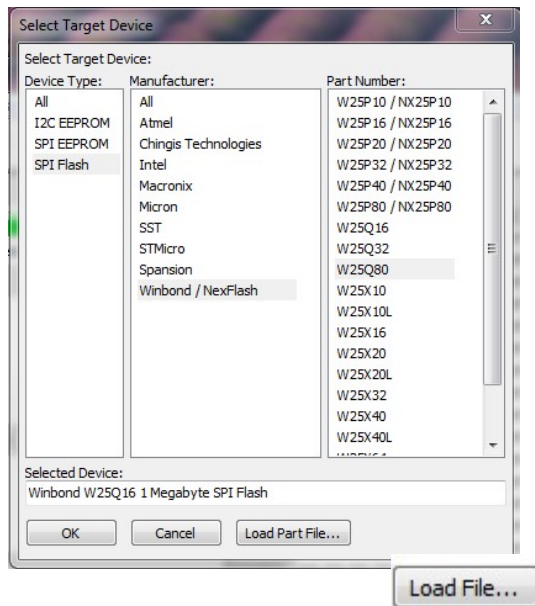



1.0 Program SPI Flash:

1. Start Total Phase Flash center.
2. Plug in Aardvark dongle into SPI programming header J7.
3. Select “Adapters”=> then “Add Adapter” menu option
4. The Aardvark dongle connected to the PC running the flash center should appear in pop-up window. Select the dongle. 
5. Choose Target via menu option or shortcut icon:
6. Choose “SPI Fash”=> Winbond/NexFlash => W25Q80



7. Load binary file via Load File icon:
8. Program target (Or Program and verify-optional) via either of these icons: 
9. Remove power to the EVM after successfully loading firmware.