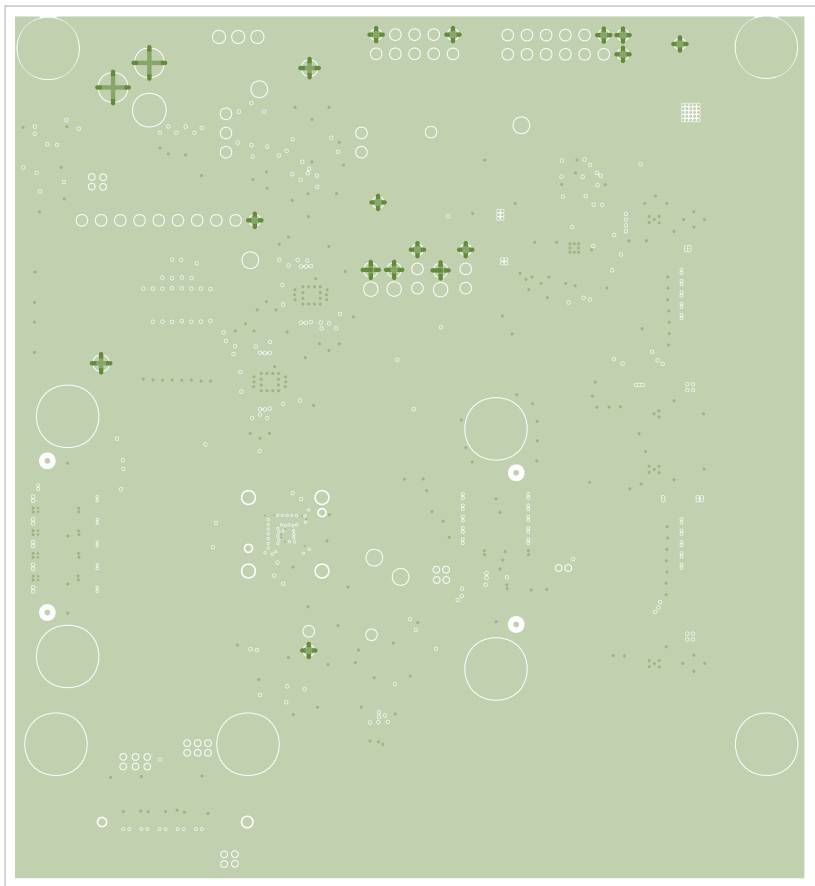
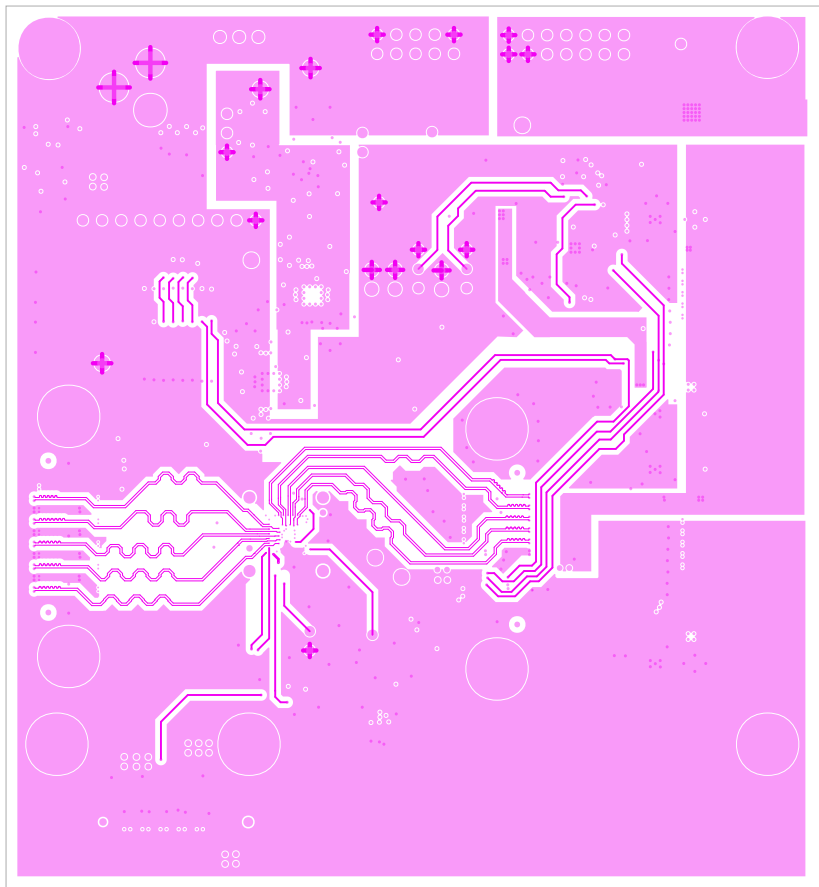
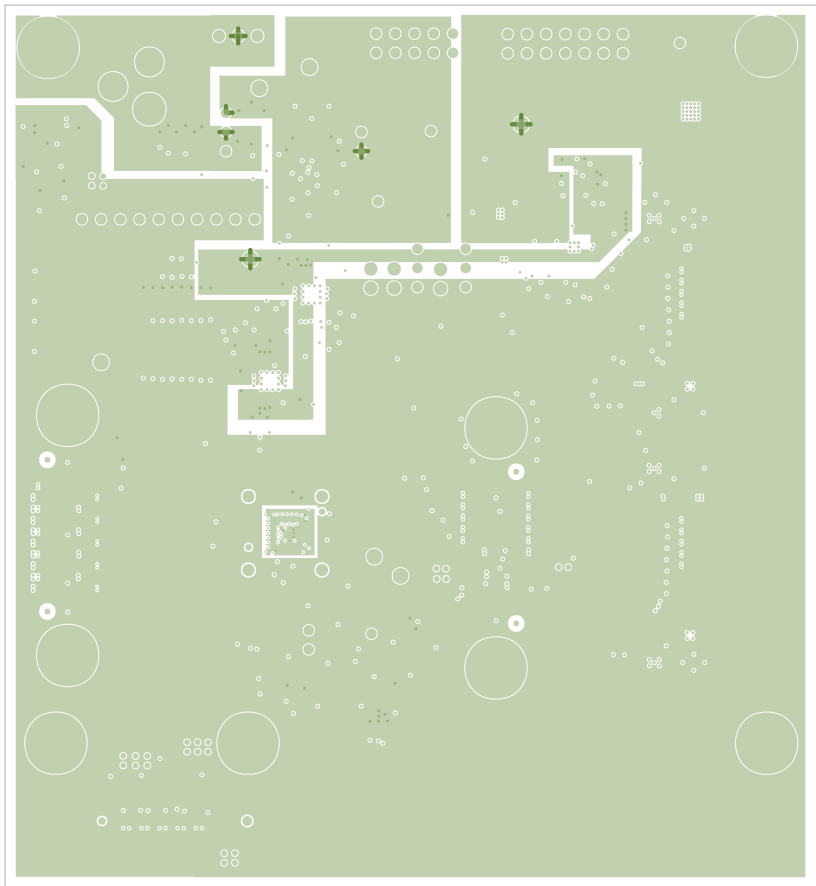


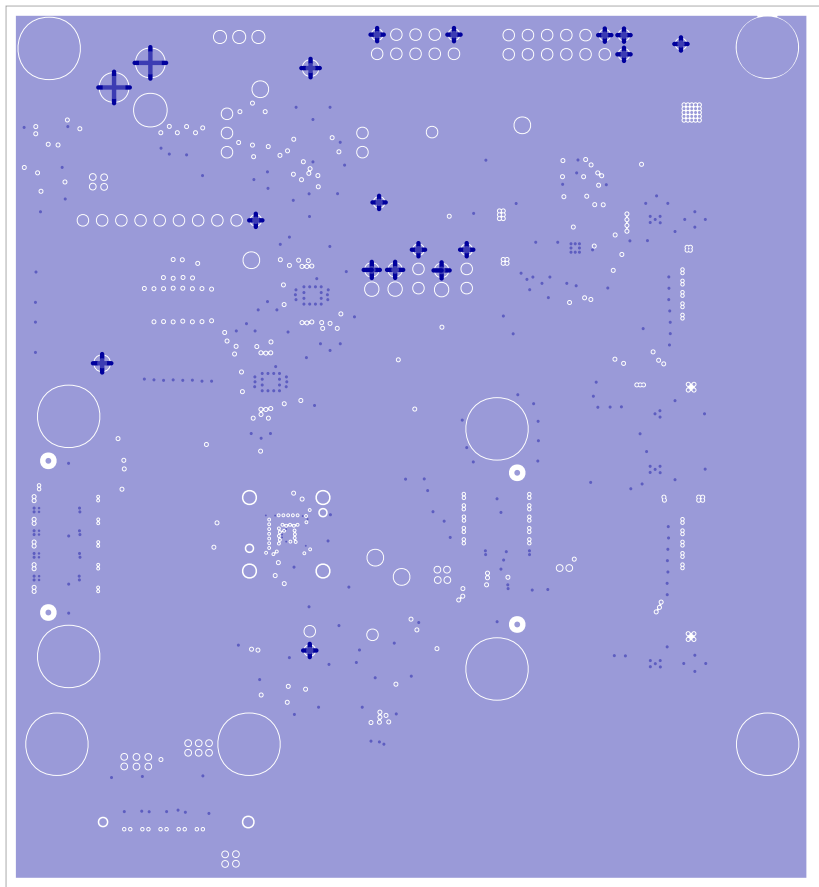
SN65DS185 EVM
REV2

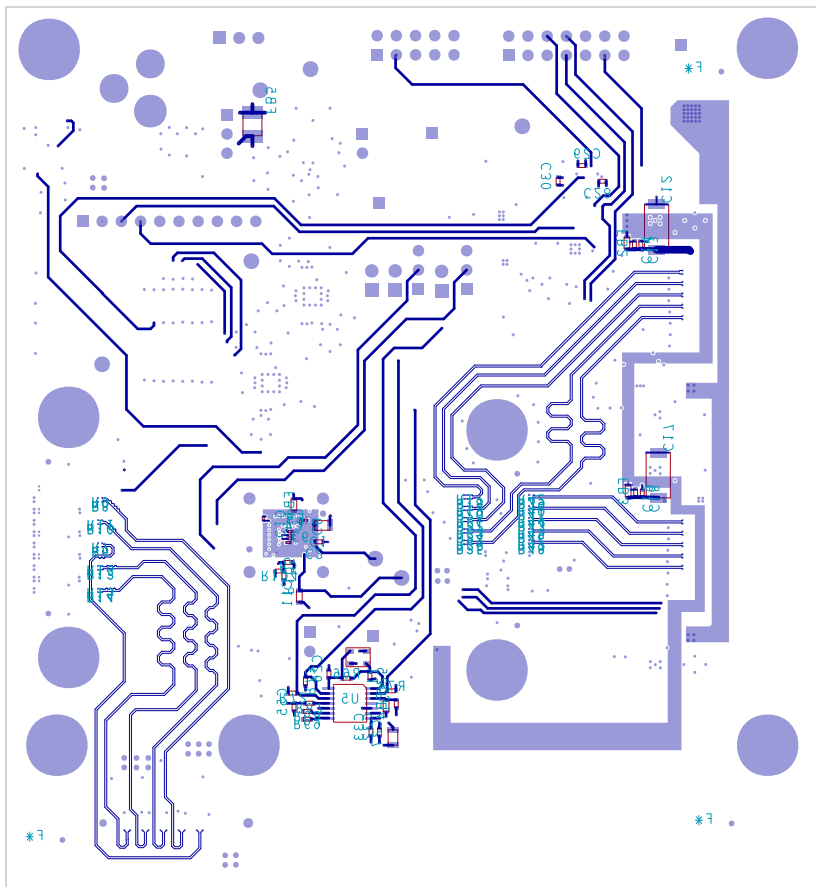
TEXAS INSTRUMENTS

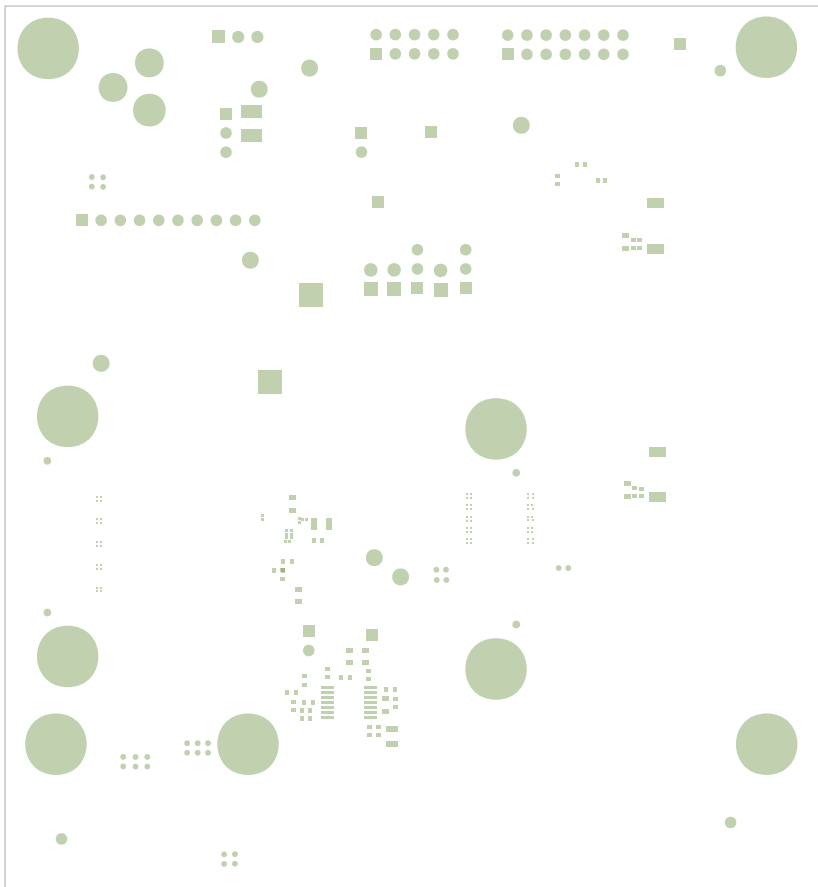






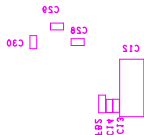








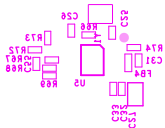
FB9

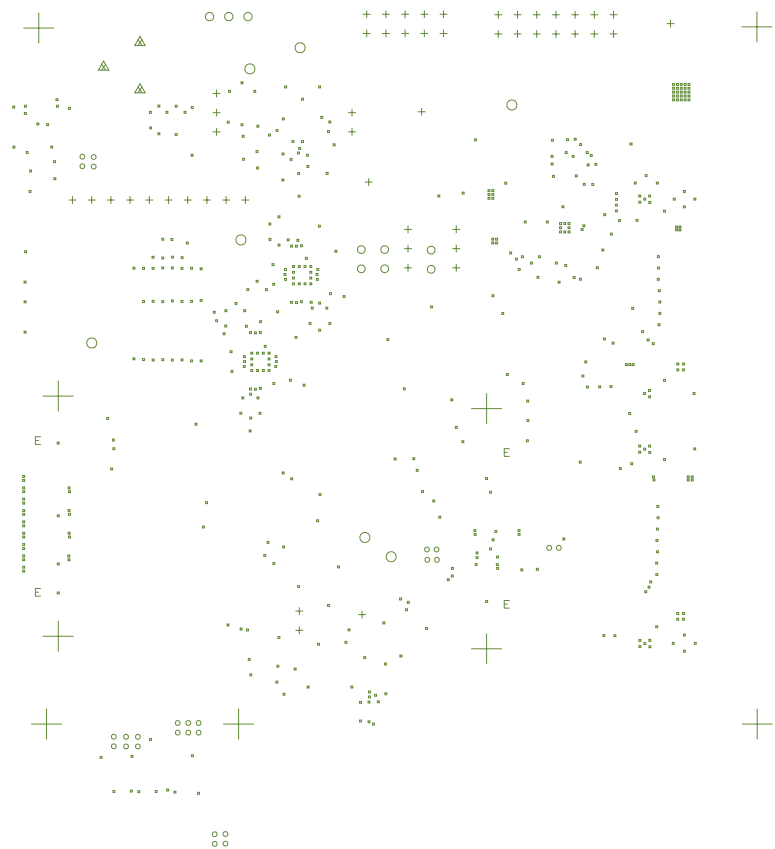


R18
R19
R20
R21
R22
R23
R24
R25
R26
R27
R28
R29
R30
R31
R32
R33
R34
R35
R36
R37
R38
R39
R40
R41
R42
R43
R44
R45
R46
R47
R48
R49
R50
R51
R52
R53
R54
R55
R56
R57
R58
R59
R60
R61
R62
R63
R64
R65
R66
R67
R68
R69
R70
R71
R72
R73
R74
R75
R76
R77
R78
R79
R80
R81
R82
R83
R84
R85
R86
R87
R88
R89
R90
R91
R92
R93
R94
R95
R96
R97
R98
R99
R100

R48
R49
R50
R51
R52
R53
R54
R55
R56
R57
R58
R59
R60
R61
R62
R63
R64
R65
R66
R67
R68
R69
R70
R71
R72
R73
R74
R75
R76
R77
R78
R79
R80
R81
R82
R83
R84
R85
R86
R87
R88
R89
R90
R91
R92
R93
R94
R95
R96
R97
R98
R99
R100

R8
R9
R10
R11
R12
R13
R14
R15
R16
R17
R18
R19
R20
R21
R22
R23
R24
R25
R26
R27
R28
R29
R30
R31
R32
R33
R34
R35
R36
R37
R38
R39
R40
R41
R42
R43
R44
R45
R46
R47
R48
R49
R50
R51
R52
R53
R54
R55
R56
R57
R58
R59
R60
R61
R62
R63
R64
R65
R66
R67
R68
R69
R70
R71
R72
R73
R74
R75
R76
R77
R78
R79
R80
R81
R82
R83
R84
R85
R86
R87
R88
R89
R90
R91
R92
R93
R94
R95
R96
R97
R98
R99
R100





DRILL CHART: TOP to BOTTOM

ALL UNITS ARE IN MILS

FIGURE	SIZE	TOLERANCE	PLATED	QTY
	5.0	+0.0/-0.0	PLATED	55
	6.0	+0.0/-0.0	PLATED	60
.	8.0	+0.0/-0.0	PLATED	502
o	16.0	+0.0/-0.0	PLATED	26
+	38.0	+0.0/-0.0	PLATED	51
o	40.0	+3.0/-3.0	PLATED	6
o	43.0	+3.0/-3.0	PLATED	3
o	52.0	+0.0/-0.0	PLATED	7
△	120.0	+2.0/-2.0	PLATED	2
△	140.0	+2.0/-2.0	PLATED	1
+	160.0	+0.0/-0.0	PLATED	9
	33.465	+0.0/-0.0	NON-PLATED	2
	39.37	+0.0/-0.0	NON-PLATED	1
E	40.0	+3.0/-3.0	NON-PLATED	4
	51.181	+0.0/-0.0	NON-PLATED	1
	63.386	+0.0/-0.0	NON-PLATED	4

ART FILM - NOTES



ART FILM - NOTES

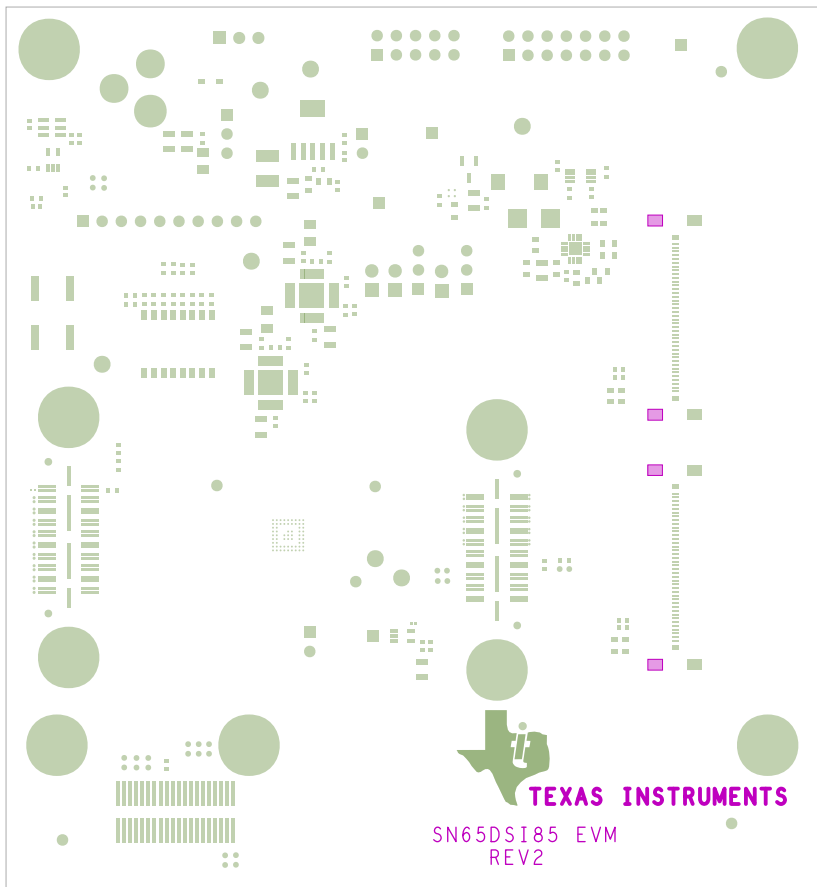


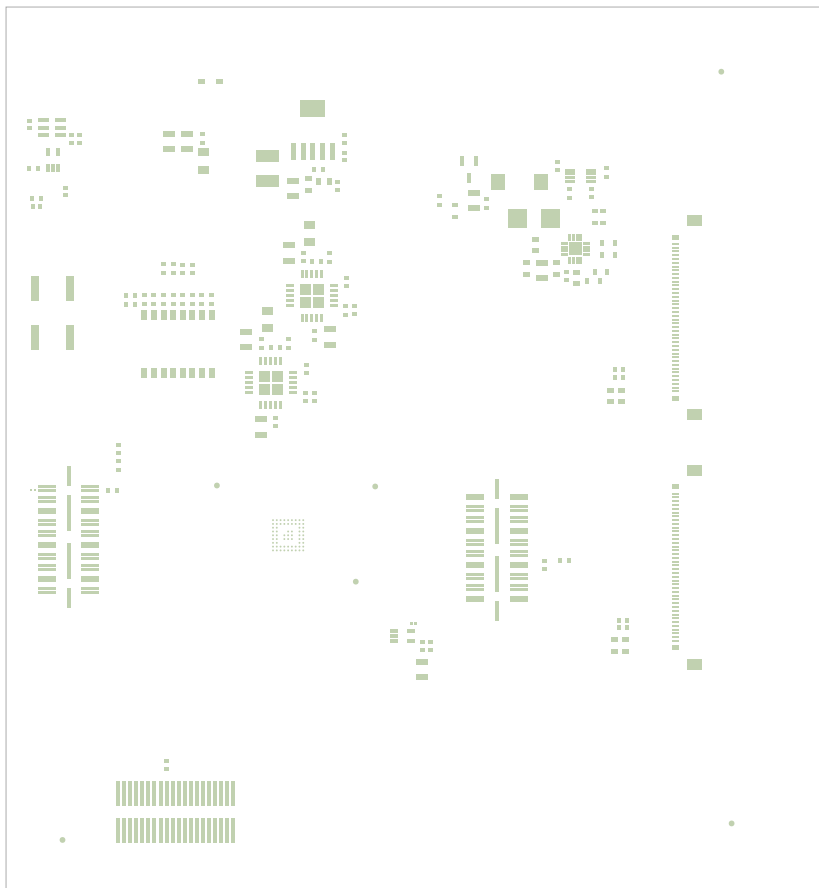
GENERAL NOTES. UNLESS OTHERWISE SPECIFIED

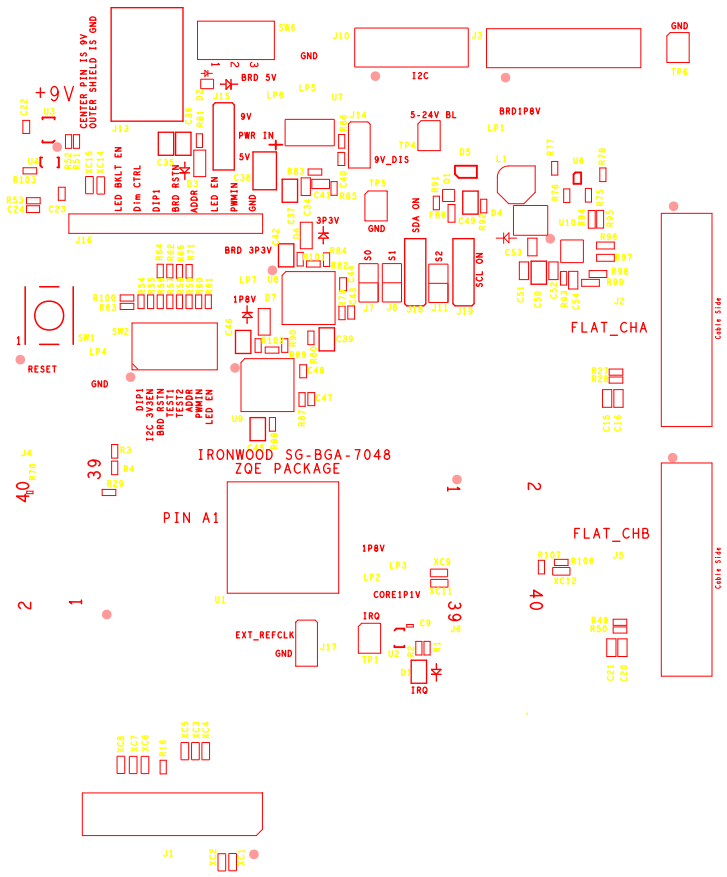
1. ALL FABRICATION ITEMS MUST MEET OR EXCEED BEST INDUSTRY PRACTICE : IPC-A-600C (Commercial std.)
2. LAMINATE MATERIAL : FR4 POLYCLAD 370 or EQUIVALENT
3. COPPER WEIGHT : 1oz START INTERNAL, 1/2oz START EXTERNAL
4. FINISHED BOARD THICKNESS : .062 +/- 10%
5. MAXIMUM WARP AND TWIST TO BE : .005 INCH PER INCH
6. MINIMUM COPPER WALL THICKNESS OF PLATED-THRU HOLES TO BE .001 INCH. THERE MUST BE 1MIL OR GREATER PLATING ON EACH SIDE OF THE BARREL WHEN VIEWED IN THE CROSS SECTION
7. MINIMUM ANNULAR RING OF PLATED-THRU HOLES TO BE .002 INCH
8. MINIMUM ALLOWABLE LINE REDUCTION TO BE 20% OR .002 WHICHEVER IS GREATER
9. 0.003 AND 0.005 SIGNAL LINES ON LAYER 1 & 3 & 6 TO BE IMPEDANCE CONTROLLED 100 OHMS DIFFERENTIAL +/- 10%
10. 0.014 SIGNAL LINES ON LAYER 1 & 3 & 6 TO BE IMPEDANCE CONTROLLED 50 OHMS +/- 10%
11. DIELECTRIC CONSTANTS ARE
CORE : 4.1
PREPREG : 4.1
12. Via's in SMT device pads to be filled with Non Conductive Epoxy. ANY VOID IN THE FILL MATERIAL MUST NOT BE GREATER THAN 25% OF THE FINISHED HOLE DIAMETER
13. A CROSS SECTION MOUNT AND DIGITAL PHOTO'S OF VIA'S TO BE PROVIDED
14. USE THE (DRPP) DUTCH REVERSE PLATING PROCESS

PROCESS NOTES

1. CIRCUITRY ON OUTER LAYERS TO BE PLATED WITH : NICKEL GOLD
2. SOLDERMASK BOTH SIDES PER ARTWORK : RED LPI
3. SILKSCREEN BOTH SIDES PER ARTWORK : COLOR = WHITE







ART FILM - anotation



ART FILM - anotation

