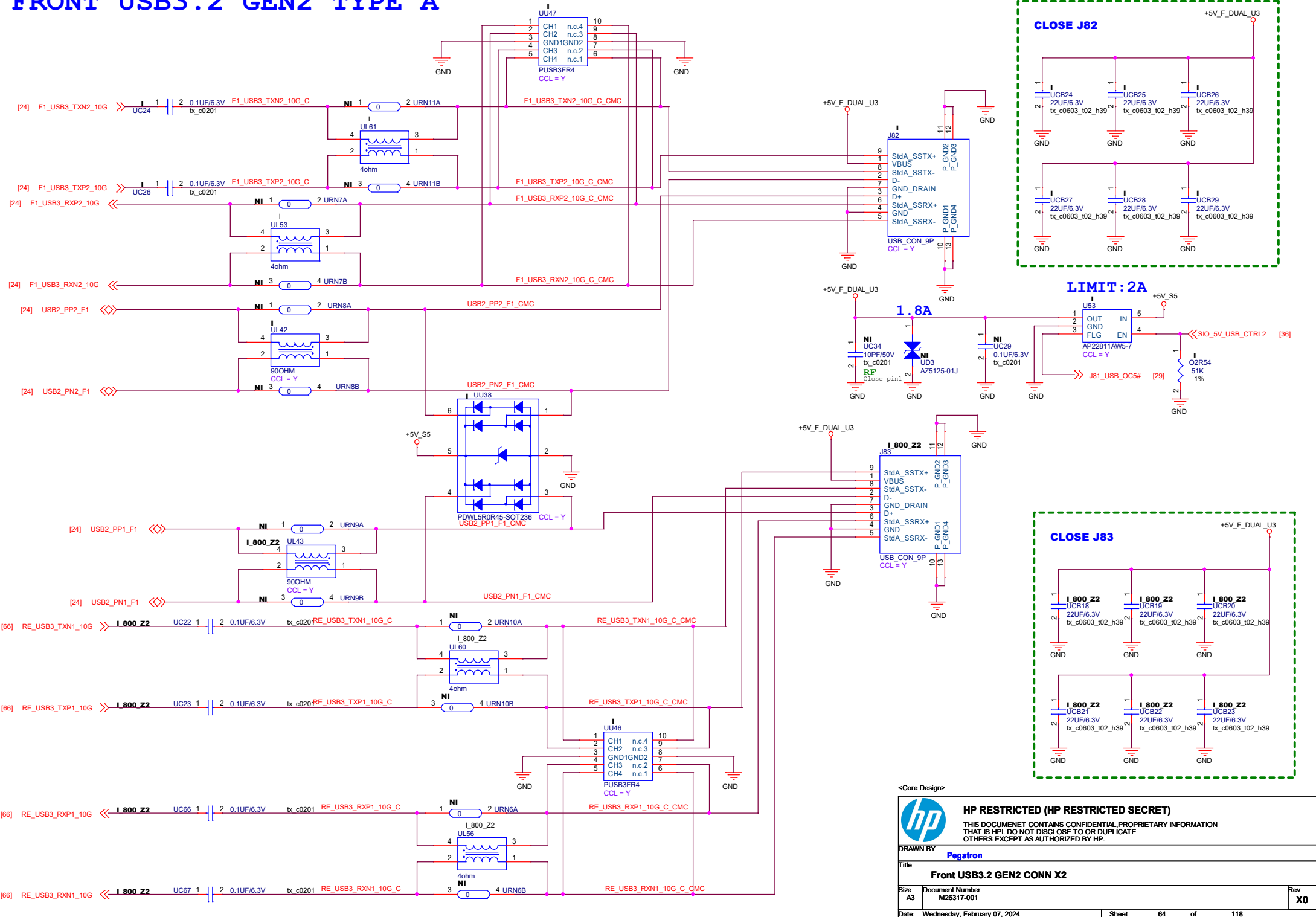


FRONT USB3.2 GEN2 TYPE A

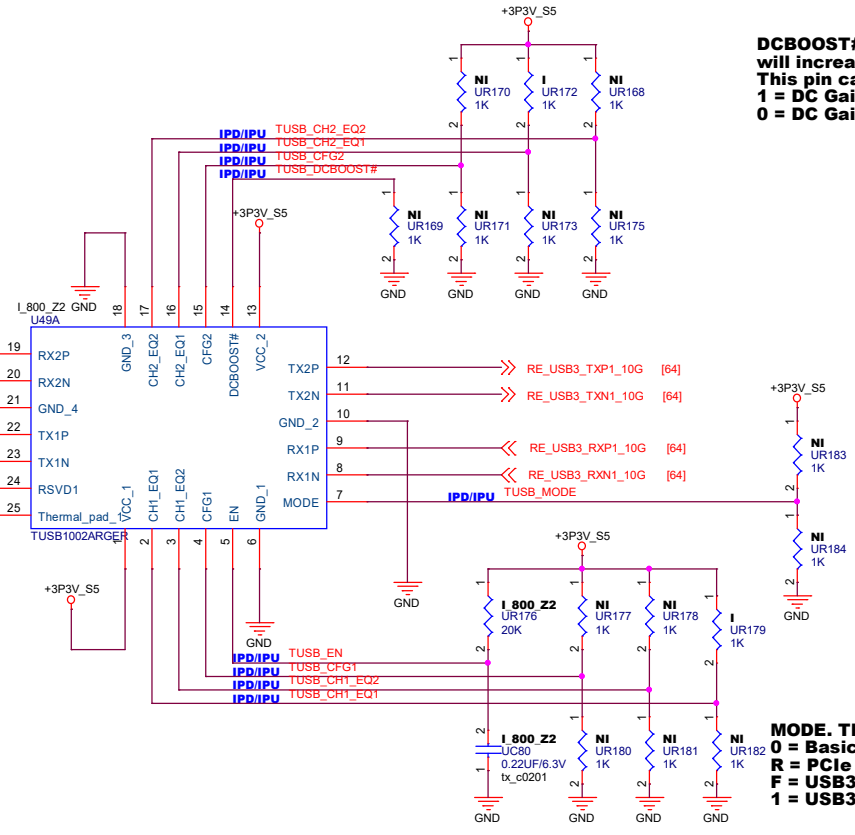
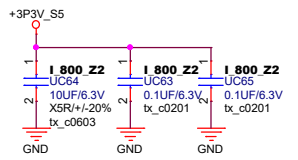


<Core Design>



HP RESTRICTED (HP RESTRICTED SECRET)
 THIS DOCUMENT CONTAINS CONFIDENTIAL, PROPRIETARY INFORMATION THAT IS HPL DO NOT DISCLOSE TO OR DUPLICATE OTHERS EXCEPT AS AUTHORIZED BY HP.

DRAWN BY Pegatron		Title Front USB3.2 GEN2 CONN X2	
Size A3	Document Number M26317-001	Date: Wednesday, February 07, 2024	Rev X0
Date: Wednesday, February 07, 2024		Sheet 64	of 118



DCBOOST#. This pin when asserted low will increase the DC Gain level +1 dB unless already at +2dB. This pin can be left unconnected if this function is not needed.
1 = DC Gain defined by Table 3.
0 = DC Gain defined by Table 3 is increased by +1 dB

Table 2. EQ Configuration Options for 1200mV Linearity 0 dB DC Gain Setting

EQ SETTING #	CH ₁ EQ2 PIN LEVEL	CH ₂ EQ1 PIN LEVEL	EQ GAIN at 2.5GHz / 5 GHz (dB)
1	0	0	1.0/3.6
2	0	R	2.1/5.5
3	0	F	3.0/6.8
4	0	1	4.0/8.1
5	R	0	4.6/9.0
6	R	R	5.5/10.0
7	R	F	6.2/10.8
8	R	1	6.9/11.6
9	F	0	7.3/11.9
10	F	R	7.9/12.6
11	F	F	8.4/13.1
12	F	1	9.0/13.7
13	1	0	9.4/14.1
14	1	R	9.9/14.6
15	1	F	10.3/14.9
16	1	1	10.7/15.3

Table 1. 4-Level Control Pin Settings

LEVEL	SETTINGS
0	Option 1: Tie 1 kΩ 5% to GND. Option 2: Tie directly to GND.
R	Tie 20 kΩ 5% to GND.
F	Float (leave pin open)
1	Option 1: Tie 1 kΩ 5% to V _{CC} . Option 2: Tie directly to V _{CC} .

MODE. This pin is for selecting different modes of operation.
0 = Basic Redriver Mode.
R = PCIe / Test Mode. PCIe Mode and TI Internal use only
F = USB3.2 x1 Dual Channel Operation enabled (TUSB1002A normal mode).
1 = USB3.2 x1 Single-channel operation.

Table 3. VOD Linear Range and DC Gain

SETTING #	CFG1 PIN LEVEL	CFG2 PIN LEVEL	CH1 DC GAIN (dB)	CH2 DC GAIN (dB)	CH1 V _{OD} LINEAR RANGE (mVpp)	CH2 V _{OD} LINEAR RANGE (mVpp)
1	0	0	+1	0	900	900
2	0	R	0	+1	900	900
3	0	F	0	0	900	900
4	0	1	+1	+1	900	900
5	R	0	0	0	1000	1000
6	R	R	+1	0	1000	1000
7	R	F	0	-1	1000	1000
8	R	1	+2	+2	1000	1000
9	F	0	-1	-1	1200	1200
10	F	R	+2	+2	1200	1200
11	F	F	0	0	1200	1200
12	F	1	+1	+1	1200	1200
13	1	0	+2	0	1200	1200
14	1	R	0	+2	1200	1200
15	1	F	0	+1	1200	1200
16	1	1	+1	0	1200	1200

<Core Design>

HP RESTRICTED (HP RESTRICTED SECRET)

THIS DOCUMENT CONTAINS CONFIDENTIAL, PROPRIETARY INFORMATION THAT IS HPL DO NOT DISCLOSE TO OR DUPLICATE OTHERS EXCEPT AS AUTHORIZED BY HP.

DRAWN BY Pegatron

Title USB Redriver 1

Size A3	Document Number M26317-001	Rev X0
Date: Wednesday, February 07, 2024	Sheet 66 of 118	