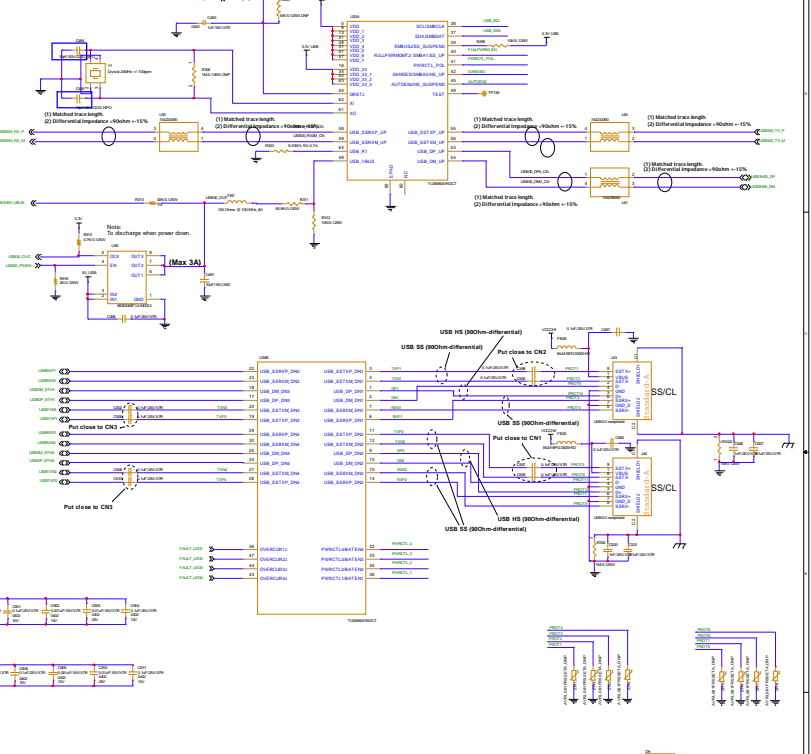
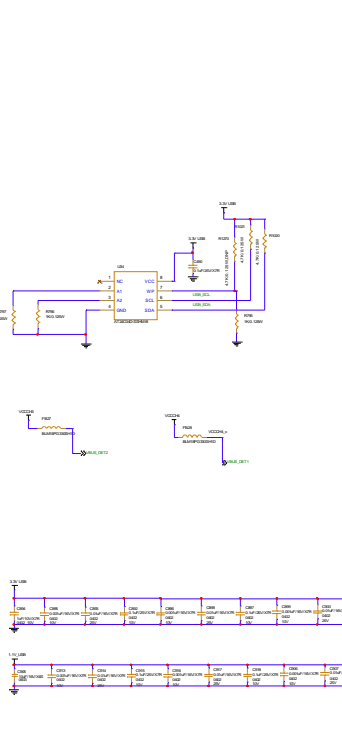
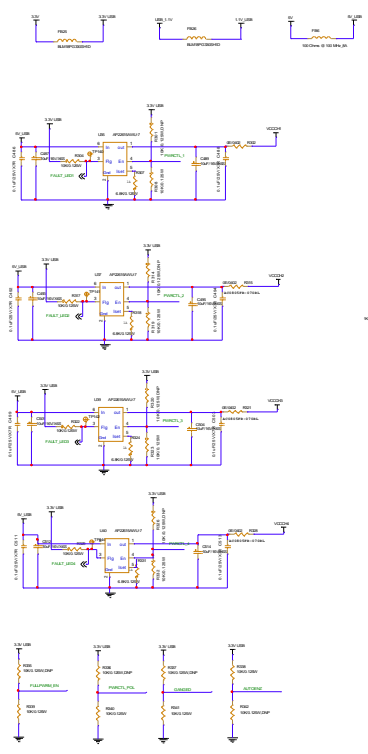


crystal need to choose and need to be alter design as per chosen crystal AND POWER NEED TO CHOOSE

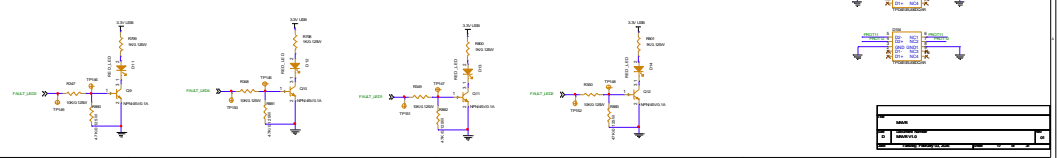


CONVERTER NOTE

1. Power traces (1.8V, 3.3V, 5.0V, 1V, VCCIOV1) should be broad.
2. Every high speed signal trace (USB 2.0/3.0) should be wired as shunt as possible.
3. Every high speed signal trace (USB 2.0/3.0) should be wired as shunt as possible.
4. Every high speed signal trace (USB 2.0/3.0) should be wired as shunt as possible.
5. Every high speed signal trace (USB 2.0/3.0) should be wired as shunt as possible.
6. Every high speed signal trace (USB 2.0/3.0) should be wired as shunt as possible.
7. Every high speed signal trace (USB 2.0/3.0) should be wired as shunt as possible.
8. Every high speed signal trace (USB 2.0/3.0) should be wired as shunt as possible.
9. Every high speed signal trace (USB 2.0/3.0) should be wired as shunt as possible.
10. Every high speed signal trace (USB 2.0/3.0) should be wired as shunt as possible.

NOTE

1. Every Power trace (1.8V, 3.3V, 5.0V, 1V, VCCIOV1) should be broad.
2. Every high speed signal trace (USB 2.0/3.0) should be wired as shunt as possible.
3. Every high speed signal trace (USB 2.0/3.0) should be wired as shunt as possible.
4. Every high speed signal trace (USB 2.0/3.0) should be wired as shunt as possible.
5. Every high speed signal trace (USB 2.0/3.0) should be wired as shunt as possible.
6. Every high speed signal trace (USB 2.0/3.0) should be wired as shunt as possible.
7. Every high speed signal trace (USB 2.0/3.0) should be wired as shunt as possible.
8. Every high speed signal trace (USB 2.0/3.0) should be wired as shunt as possible.
9. Every high speed signal trace (USB 2.0/3.0) should be wired as shunt as possible.
10. Every high speed signal trace (USB 2.0/3.0) should be wired as shunt as possible.



Pin	Signal	Notes
1	D+	USB 2.0
2	D-	USB 2.0
3	SS+	USB 3.0
4	SS-	USB 3.0
5	GND	Common Ground
6	NC	Not Connected
7	NC	Not Connected
8	NC	Not Connected
9	NC	Not Connected
10	NC	Not Connected
11	NC	Not Connected
12	NC	Not Connected
13	NC	Not Connected
14	NC	Not Connected
15	NC	Not Connected
16	NC	Not Connected
17	NC	Not Connected
18	NC	Not Connected
19	NC	Not Connected
20	NC	Not Connected
21	NC	Not Connected
22	NC	Not Connected
23	NC	Not Connected
24	NC	Not Connected
25	NC	Not Connected
26	NC	Not Connected
27	NC	Not Connected
28	NC	Not Connected
29	NC	Not Connected
30	NC	Not Connected
31	NC	Not Connected
32	NC	Not Connected
33	NC	Not Connected
34	NC	Not Connected
35	NC	Not Connected
36	NC	Not Connected
37	NC	Not Connected
38	NC	Not Connected
39	NC	Not Connected
40	NC	Not Connected
41	NC	Not Connected
42	NC	Not Connected
43	NC	Not Connected
44	NC	Not Connected
45	NC	Not Connected
46	NC	Not Connected
47	NC	Not Connected
48	NC	Not Connected
49	NC	Not Connected
50	NC	Not Connected
51	NC	Not Connected
52	NC	Not Connected
53	NC	Not Connected
54	NC	Not Connected
55	NC	Not Connected
56	NC	Not Connected
57	NC	Not Connected
58	NC	Not Connected
59	NC	Not Connected
60	NC	Not Connected
61	NC	Not Connected
62	NC	Not Connected
63	NC	Not Connected
64	NC	Not Connected
65	NC	Not Connected
66	NC	Not Connected
67	NC	Not Connected
68	NC	Not Connected
69	NC	Not Connected
70	NC	Not Connected
71	NC	Not Connected
72	NC	Not Connected
73	NC	Not Connected
74	NC	Not Connected
75	NC	Not Connected
76	NC	Not Connected
77	NC	Not Connected
78	NC	Not Connected
79	NC	Not Connected
80	NC	Not Connected
81	NC	Not Connected
82	NC	Not Connected
83	NC	Not Connected
84	NC	Not Connected
85	NC	Not Connected
86	NC	Not Connected
87	NC	Not Connected
88	NC	Not Connected
89	NC	Not Connected
90	NC	Not Connected
91	NC	Not Connected
92	NC	Not Connected
93	NC	Not Connected
94	NC	Not Connected
95	NC	Not Connected
96	NC	Not Connected
97	NC	Not Connected
98	NC	Not Connected
99	NC	Not Connected
100	NC	Not Connected