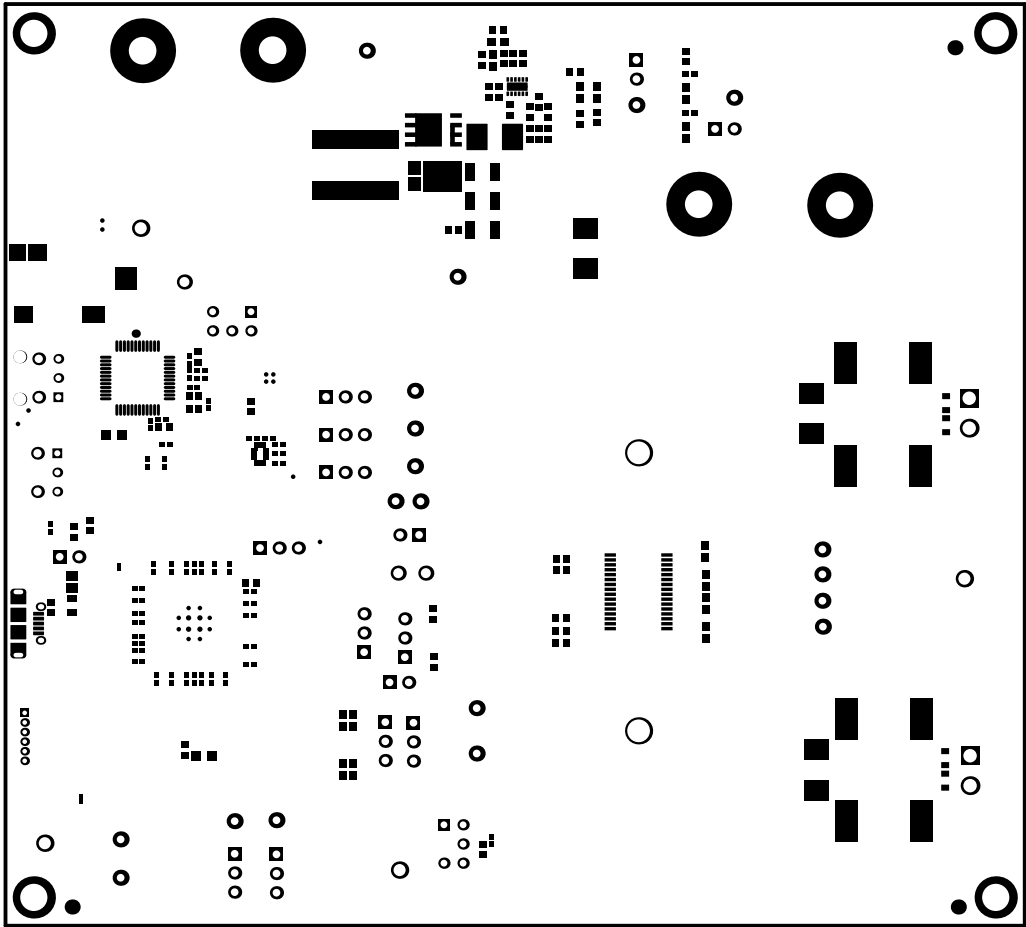
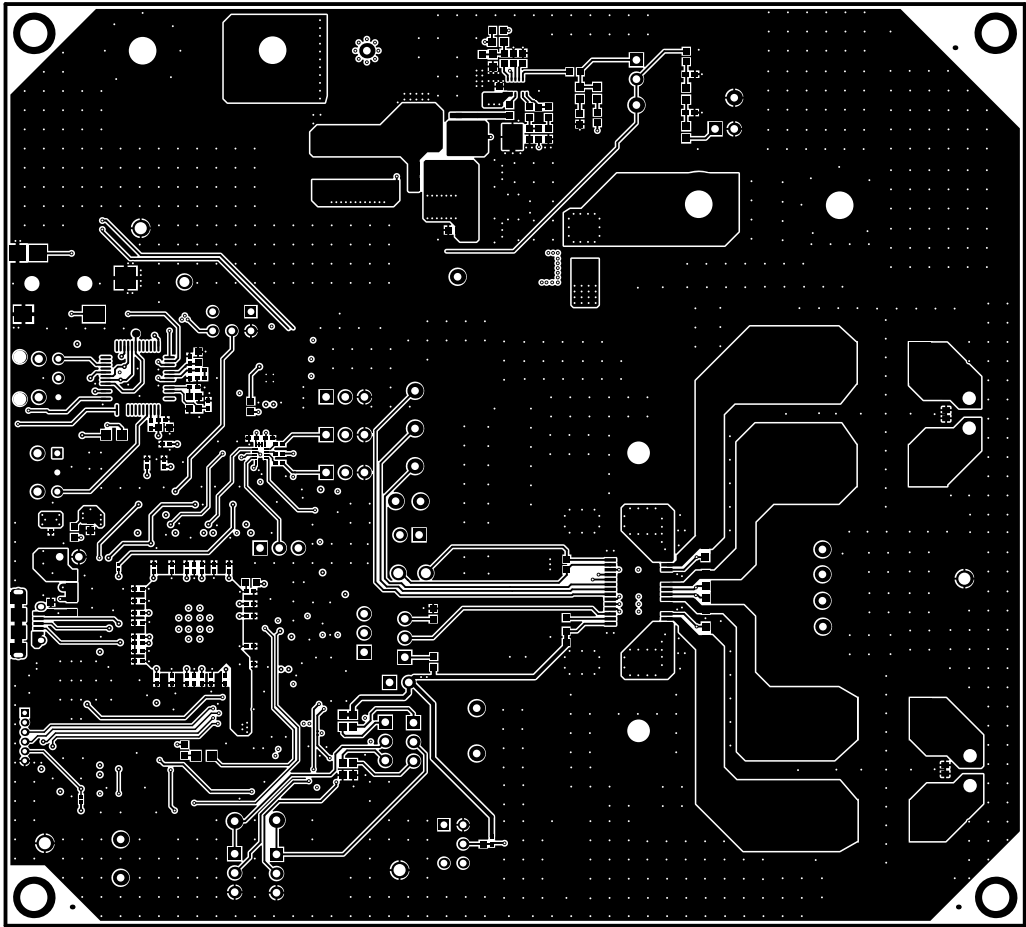


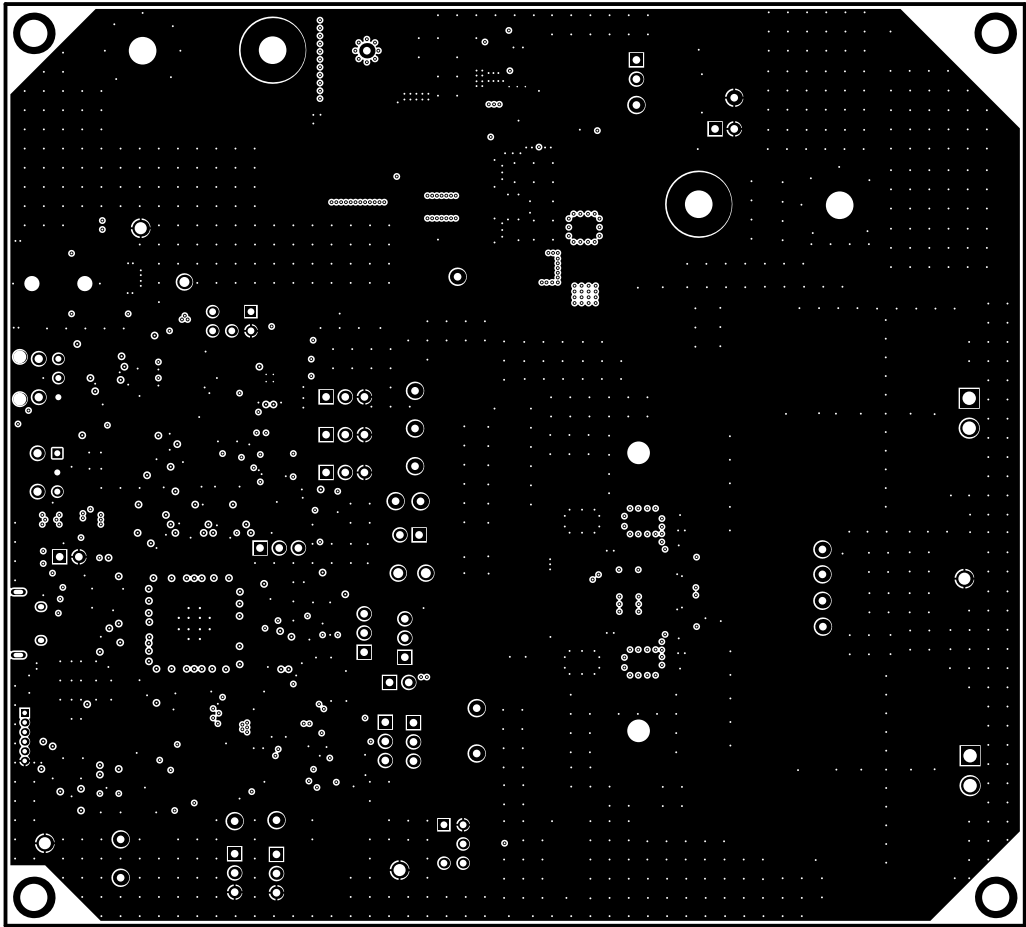
ALL ARTWORK VIEWED FROM TOP SIDE	BOARD #: AMPS262	REV: A	SUN REV: Not in version control
LAYER NAME = Top Overlay	TID #: N/A		
PLOT NAME = Top Overlay	GENERATED : 1/21/2025 3:51:13 PM	TEXAS INSTRUMENTS	



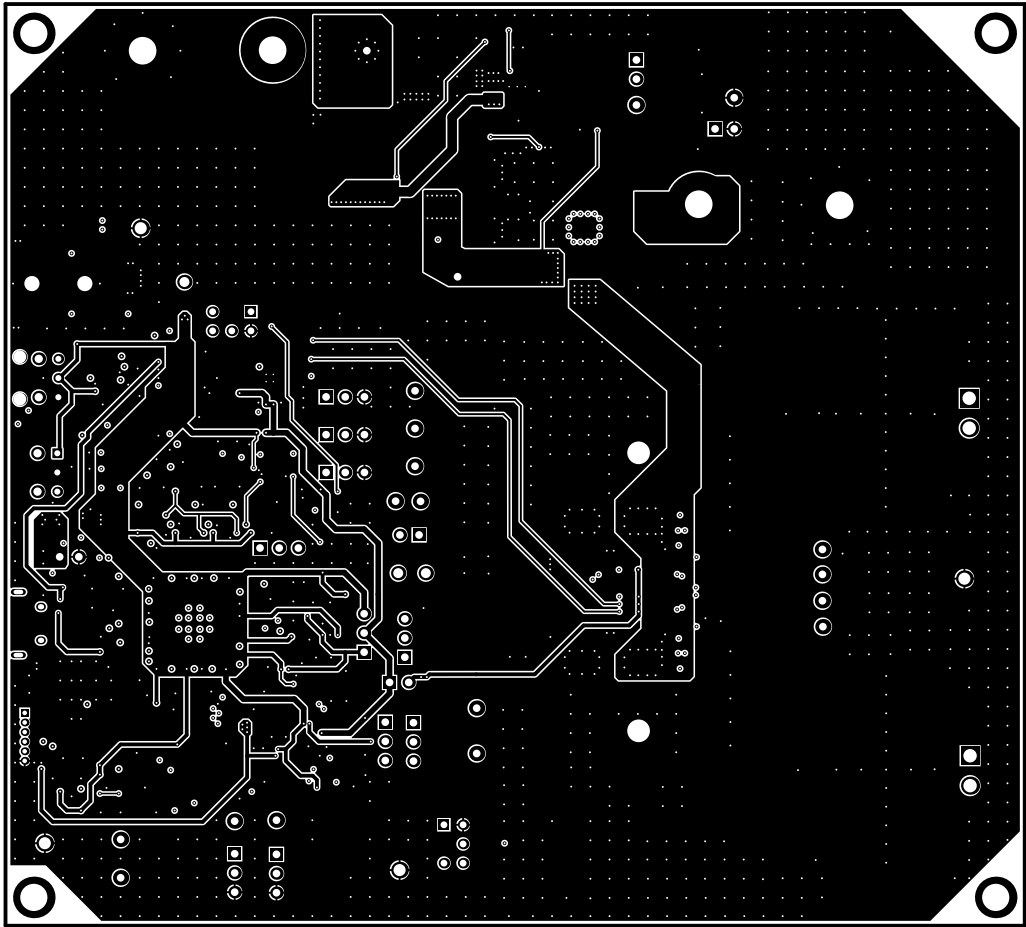
ALL ARTWORK VIEWED FROM TOP SIDE	BOARD #: AMPS262	REV: A	SUN REV: Not in version control
LAYER NAME = Top Solder	TID #: N/A		
PLOT NAME = Top Solder Mask	GENERATED : 1/21/2025 3:51:13 PM	TEXAS INSTRUMENTS	



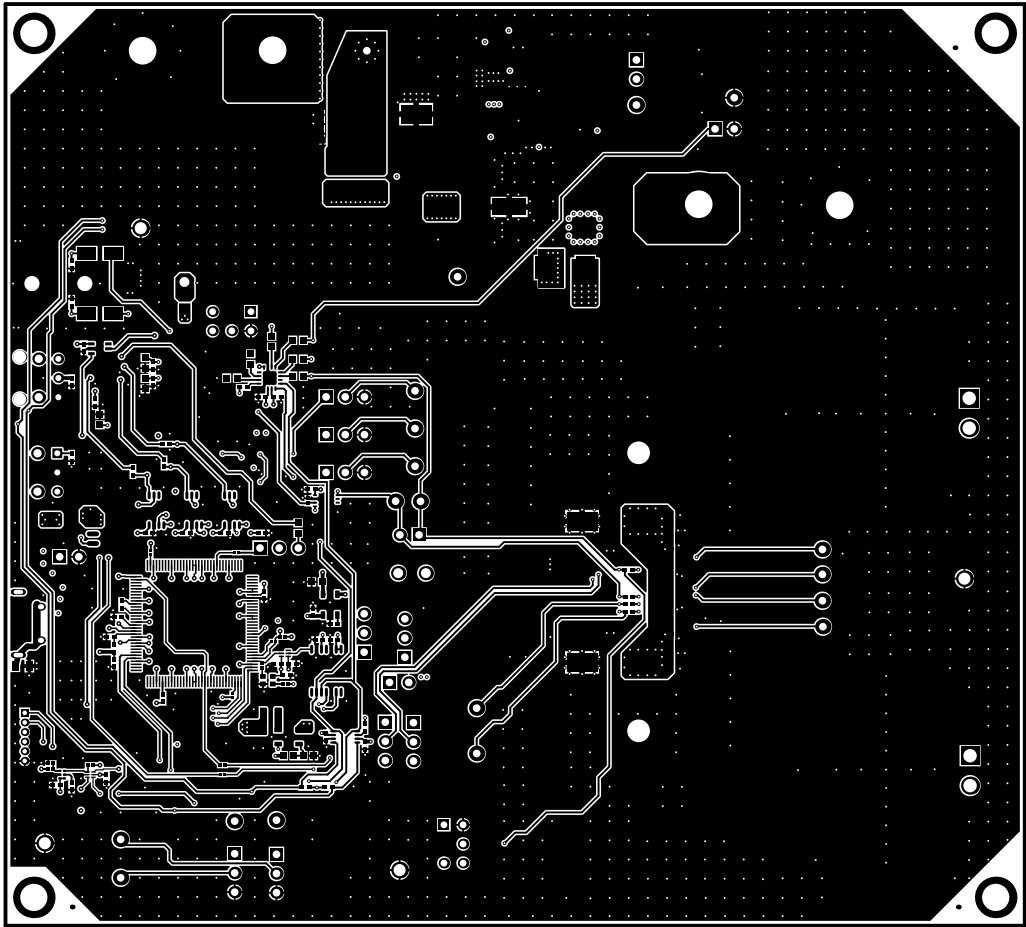
ALL ARTWORK VIEWED FROM TOP SIDE	BOARD #: AMPS262	REV: A	SUN REV: Not in version control
LAYER NAME = Top Layer	TID #: N/A		
PLOT NAME = Top Layer	GENERATED : 1/21/2025 3:51:13 PM	TEXAS INSTRUMENTS	



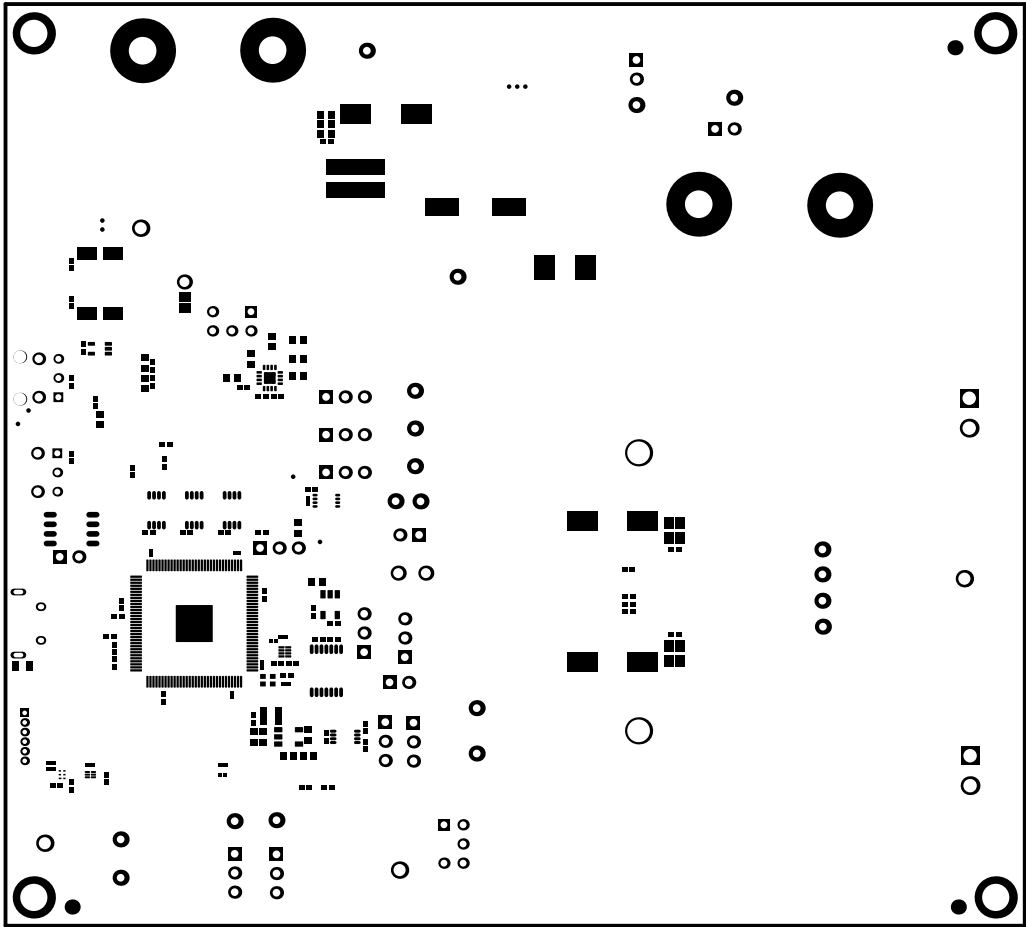
ALL ARTWORK VIEWED FROM TOP SIDE	BOARD #: AMPS262	REV: A	SUN REV: Not in version control
LAYER NAME =	TID #: N/A		
PLOT NAME = Signal Layer 1	GENERATED : 1/21/2025 3:51:13 PM	TEXAS INSTRUMENTS	



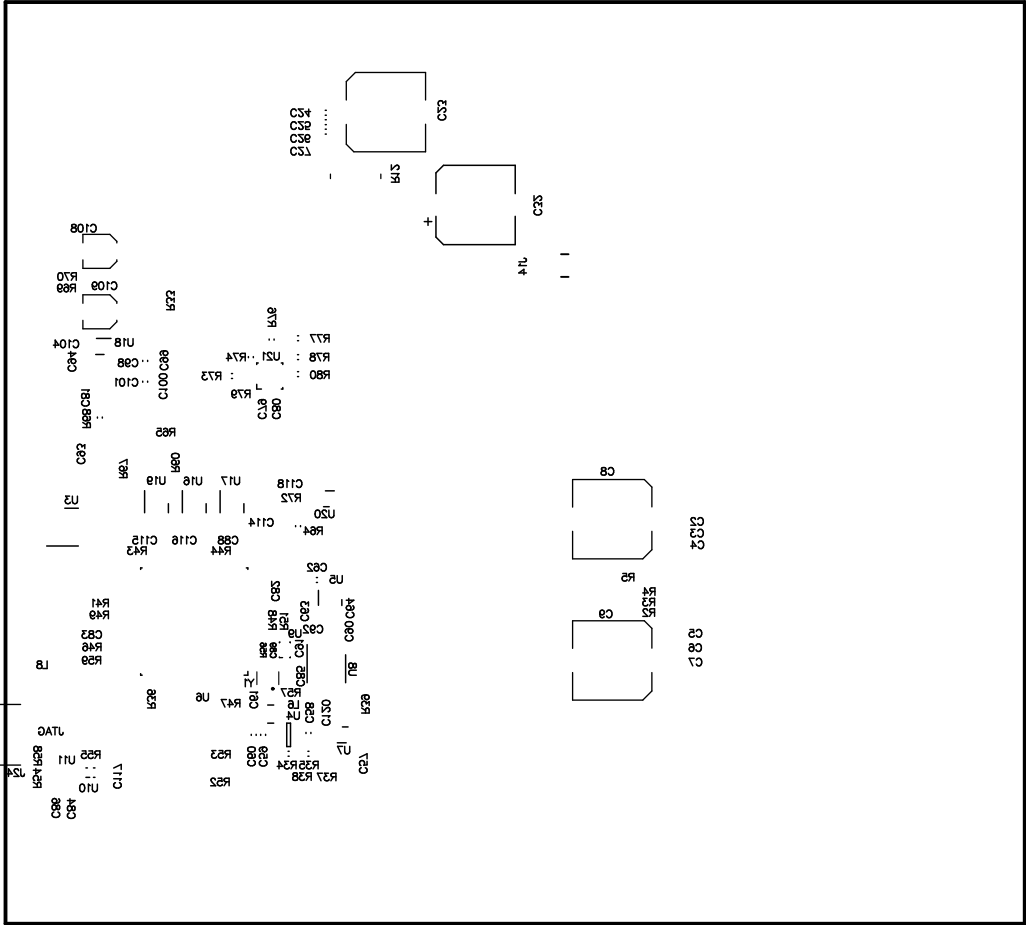
ALL ARTWORK VIEWED FROM TOP SIDE	BOARD #: AMPS262	REV: A	SUN REV: Not in version control
LAYER NAME =	TID #: N/A		
PLOT NAME = Signal Layer 2	GENERATED : 1/21/2025 3:51:13 PM	TEXAS INSTRUMENTS	



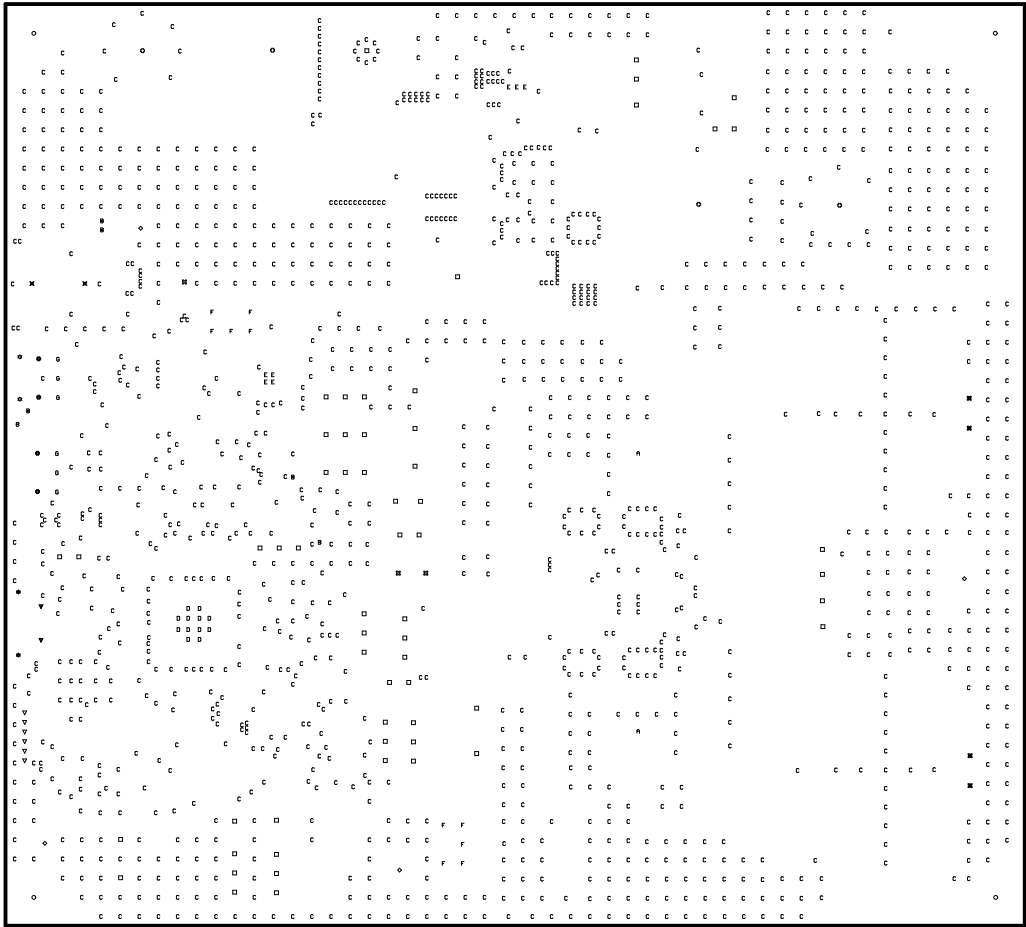
ALL ARTWORK VIEWED FROM TOP SIDE	BOARD #: AMPS262	REV: A	SUN REV: Not in version control
LAYER NAME = Bottom Layer	TID #: N/A		
PLOT NAME = Bottom Layer	GENERATED : 1/21/2025 3:51:14 PM	TEXAS INSTRUMENTS	



ALL ARTWORK VIEWED FROM TOP SIDE	BOARD #: AMPS262	REV: A	SUN REV: Not in version control
LAYER NAME = Bottom Solder	TID #: N/A		
PLOT NAME = Bottom Solder Mask	GENERATED : 1/21/2025 3:51:14 PM	TEXAS INSTRUMENTS	



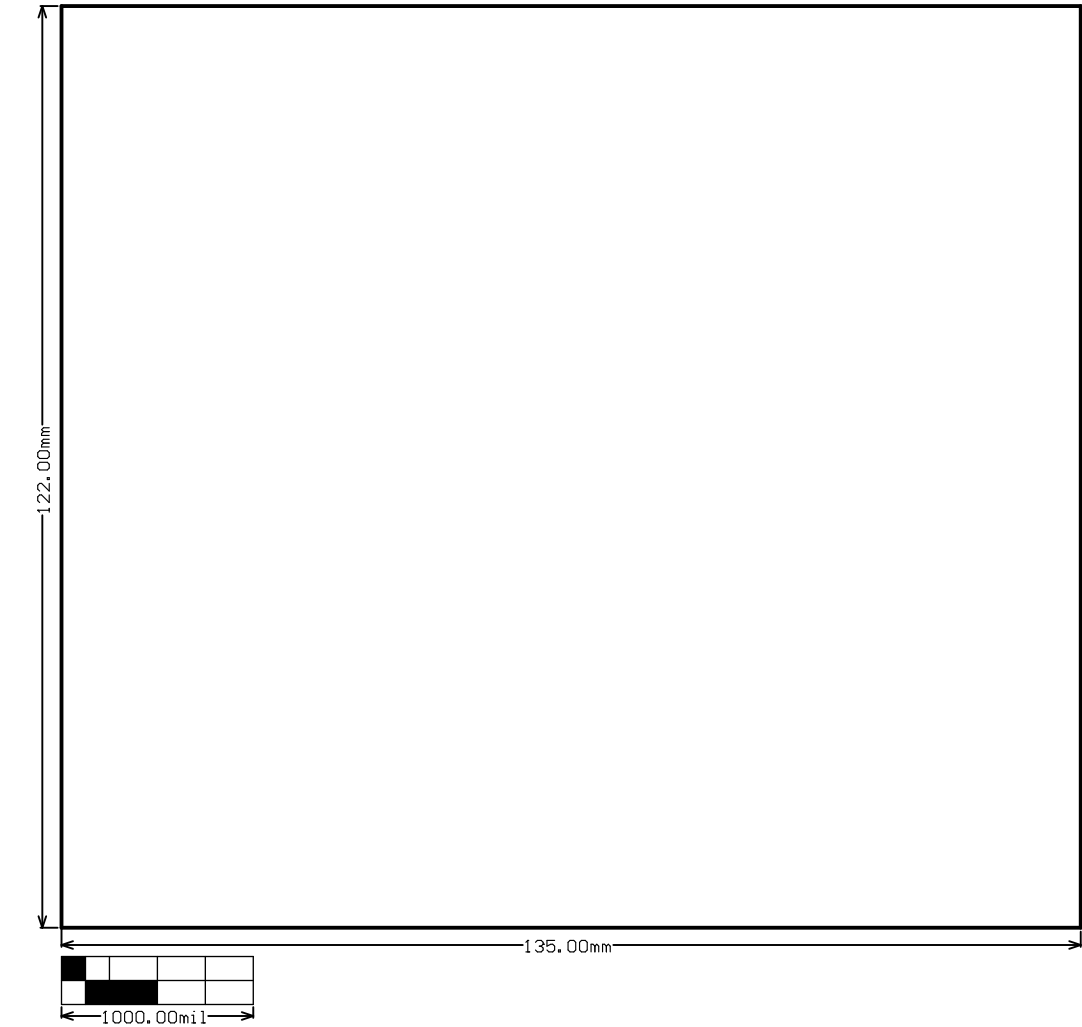
ALL ARTWORK VIEWED FROM TOP SIDE	BOARD #: AMPS262	REV: A	SUN REV: Not in version control
LAYER NAME = Bottom Overlay	TID #: N/A		
PLOT NAME = Bottom Overlay	GENERATED : 1/21/2025 3:51:14 PM	TEXAS INSTRUMENTS	



Symbol	Count	Hole Size	Plated	Hole Type	Drill Layer Pair	Via/Pad	Hole Tolerance
*	2	23.62mil (0.600mm)	PTH	Slot	Top Layer - Bottom Layer	Pad	
▽	2	27.56mil (0.700mm)	PTH	Slot	Top Layer - Bottom Layer	Pad	
×	2	63.00mil (1.600mm)	NPTH	Round	Top Layer - Bottom Layer	Pad	
☆	2	66.93mil (1.700mm)	NPTH	Round	Top Layer - Bottom Layer	Pad	
Λ	2	118.11mil (3.000mm)	PTH	Round	Top Layer - Bottom Layer	Pad	
⊗	3	52.00mil (1.321mm)	PTH	Round	Top Layer - Bottom Layer	Pad	
⊙	4	43.31mil (1.100mm)	PTH	Round	Top Layer - Bottom Layer	Pad	
◇	4	63.00mil (1.600mm)	PTH	Round	Top Layer - Bottom Layer	Pad	
⊗	4	70.00mil (1.778mm)	PTH	Round	Top Layer - Bottom Layer	Pad	
○	4	141.73mil (3.600mm)	PTH	Round	Top Layer - Bottom Layer	Pad	
⊙	4	144.00mil (3.658mm)	PTH	Round	Top Layer - Bottom Layer	Pad	
B	6	10.00mil (0.254mm)	PTH	Round	Top Layer - Bottom Layer	Via	
▽	6	24.00mil (0.610mm)	PTH	Round	Top Layer - Bottom Layer	Pad	
G	6	31.50mil (0.800mm)	PTH	Round	Top Layer - Bottom Layer	Pad	
E	7	7.87mil (0.200mm)	PTH	Round	Top Layer - Bottom Layer	Via	
F	10	35.43mil (0.900mm)	PTH	Round	Top Layer - Bottom Layer	Pad	
D	12	11.81mil (0.300mm)	PTH	Round	Top Layer - Bottom Layer	Via	
□	59	40.00mil (1.016mm)	PTH	Round	Top Layer - Bottom Layer	Pad	
C	1386	10.00mil (0.254mm)	PTH	Round	Top Layer - Bottom Layer	Via	+/-3.00mil
1525 Total							

Slot definitions : Routed Path Length = Calculated from tool start centre position to tool end centre position.
Hole Length = Routed Path Length + Tool Size = Slot length as defined in the PCB layout

ALL ARTWORK VIEWED FROM TOP SIDE	BOARD #: AMPS262	REV: A	SUN REV: Not in version control
LAYER NAME = Drill Drawing	TID #: N/A		
PLOT NAME = Drill Drawing	GENERATED : 1/21/2025 3:51:14 PM	TEXAS INSTRUMENTS	



ALL ARTWORK VIEWED FROM TOP SIDE	BOARD #: AMPS262	REV: A	SUN REV: Not in version control
LAYER NAME = M2 Board Dimensions	TID #: N/A		
PLOT NAME = Board Dimensions	GENERATED : 1/21/2025 3:51:15 PM	TEXAS INSTRUMENTS	