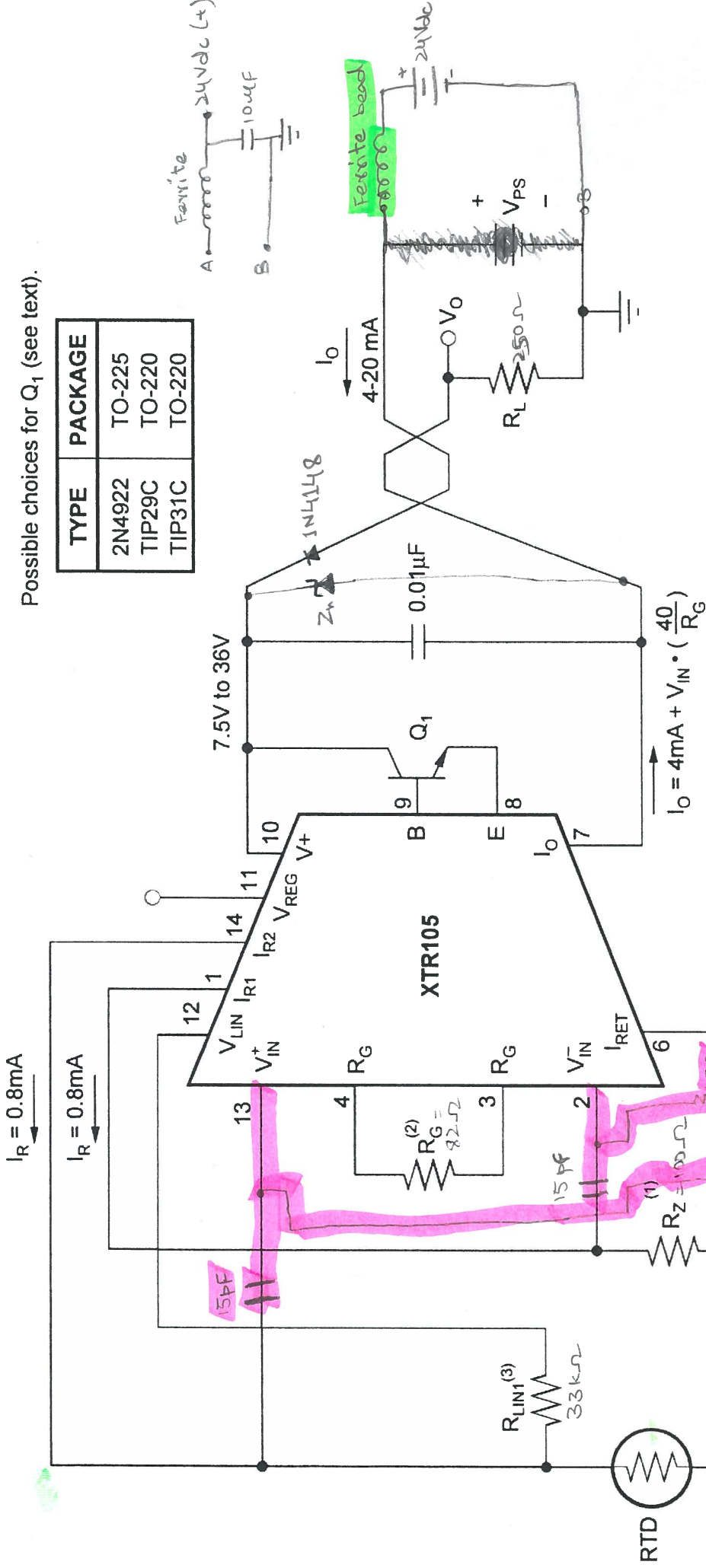


0 - 100°C Temp Sensor

Possible choices for Q₁ (see text).

TYPE	PACKAGE
2N4922	TO-225
TIP29C	TO-220
TIP31C	TO-220



NOTES: (1) R_Z = RTD resistance at minimum measured temperature.

$$(2) R_G = \frac{2R_1(R_2 + R_Z) - 4(R_2R_Z)}{R_2 - R_1}$$

$$(3) R_{LIN1} = \frac{R_{LIN}(R_2 - R_1)}{2(2R_1 - R_2 - R_Z)}$$

where R₁ = RTD Resistance at (T_{MIN} + T_{MAX})/2

R₂ = RTD Resistance at T_{MAX}

R_{LIN} = 1kΩ (Internal)

RS

237 - 1607