

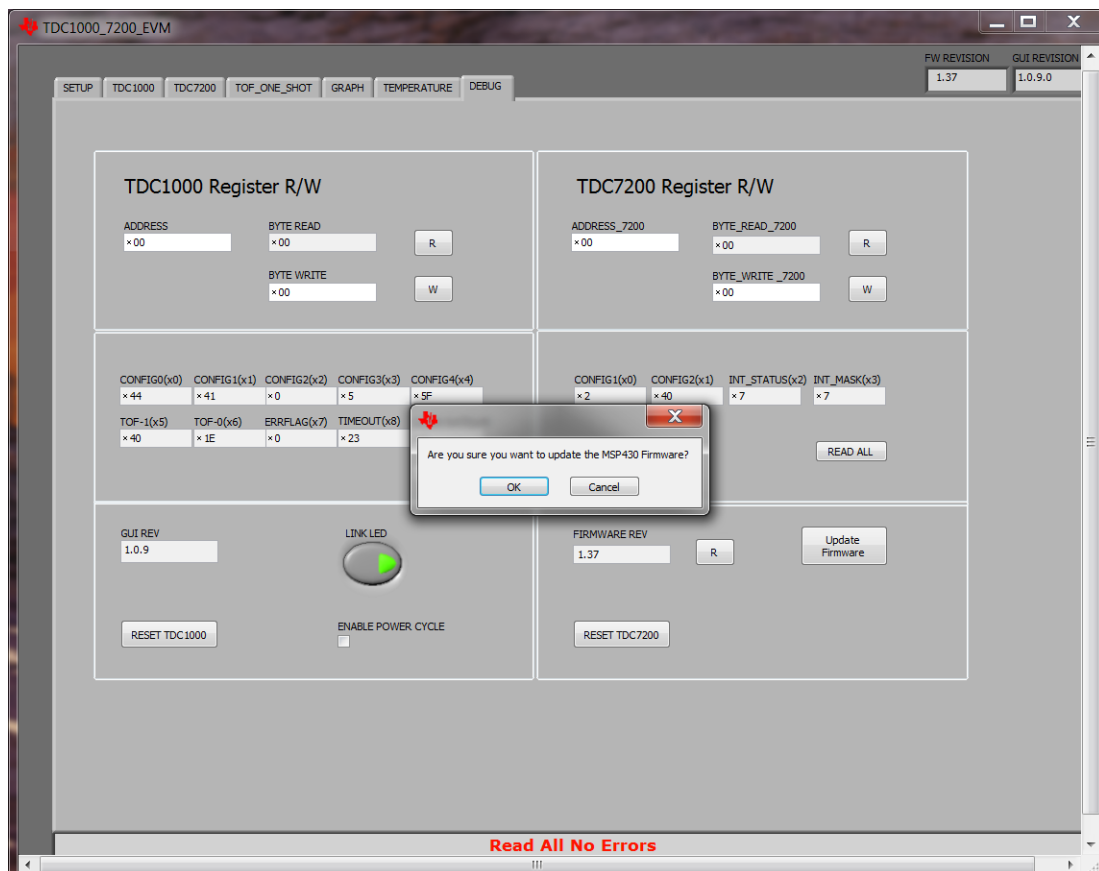
# LMP93601EVM Firmware Upgrade Instructions

## Firmware Upgrade

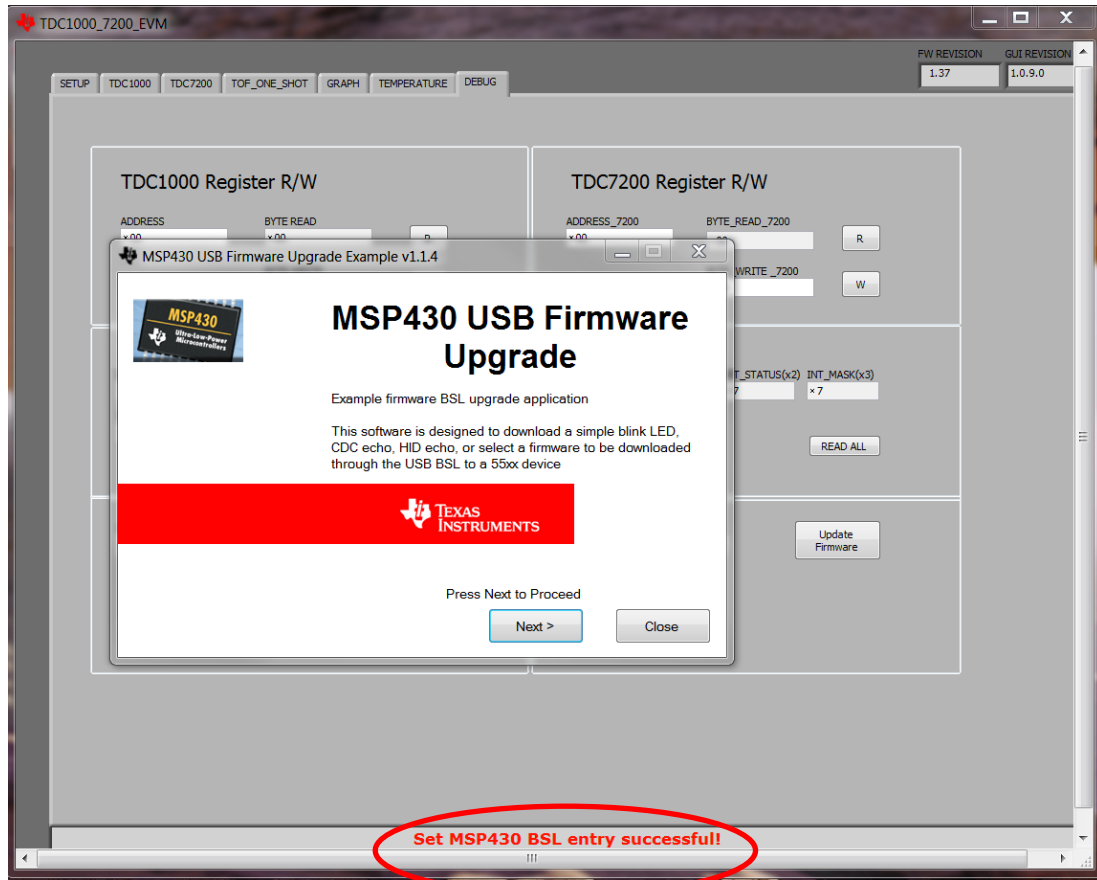
Note: The LMP93601EVM comes preloaded with firmware. The following steps are needed only if the firmware needs to be updated.

To change the firmware, complete the following steps:

1. Connect the LMP93601EVM to a PC.
2. Open the LMP93601EVM GUI
3. Press "OK" if a connection error window pops up. If there is no connection error pop up, skip step 4.
4. Disconnect and reconnect the LMP93601EVM to PC while holding BSL button SW1 down.
5. In the LMP93601EVM GUI go to the "DEBUG" tab.
6. Click on the Update Firmware button.

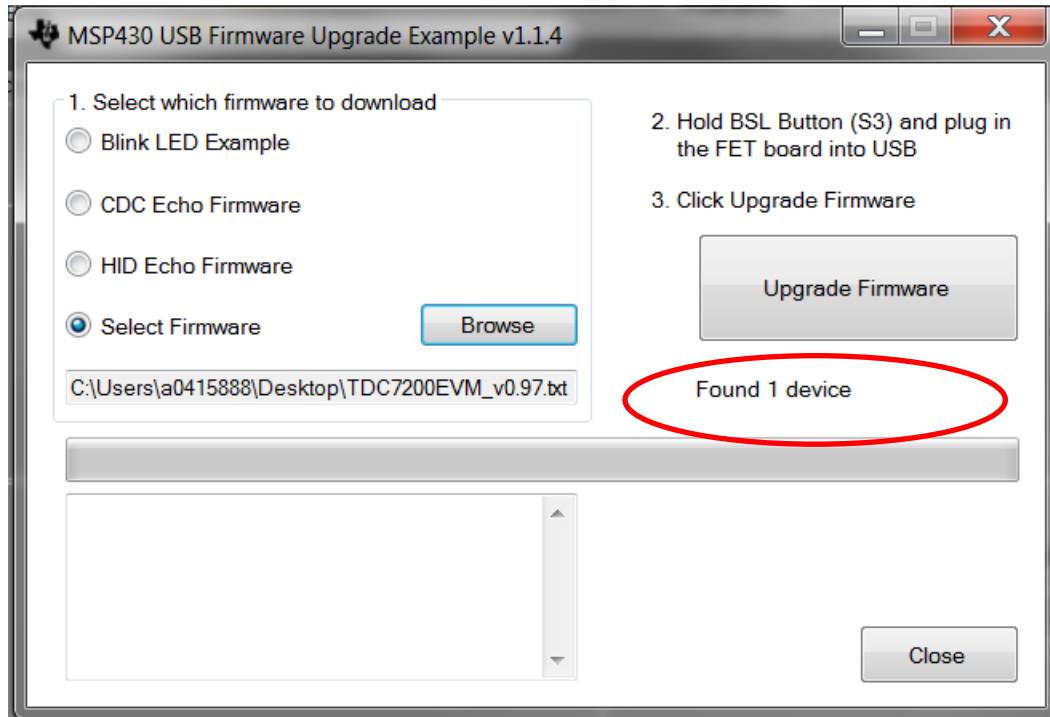


7. The MSP430 USB Firmware Upgrade window will pop up as shown below. Note if your LMP93601EVM already has a valid firmware, it will report "Set MSP430 BSL entry successful" in the GUI status message box as shown in the screen shot below.



Note: If you don't see this GUI app coming up (probably your system protection/privacy settings doesn't allow another exe to be called), you can go to the install folder (C:\Program Files (x86)\Texas Instruments\LMP93601EVM\MSP430 USB Firmware Upgrade Example) and start the bootstrap loader GUI application manually by double clicking "BSL\_USB\_GUI" and follow the screen instructions.

8. Click "Next" to proceed on the first prompt; read and accept the license agreement and click "Next" to continue. You should a screen which shows "Found 1 device" as below:



**Figure 1: USB Firmware Upgrade Window**

9. Select the Select Firmware button and browse to the firmware file. Latest firmware hex file for the EVM can be found in the GUI install folder C:\Program Files (x86)\Texas Instruments\LMP93601EVM\Firmware
10. Click on the Upgrade Firmware button to program the EVM. Close the application and LMP936010EVM GUI when done.
11. Disconnect and reconnect the LMP93601EVM USB connection. Then restart the LMP93601EVM GUI.