

Dear Authorities,

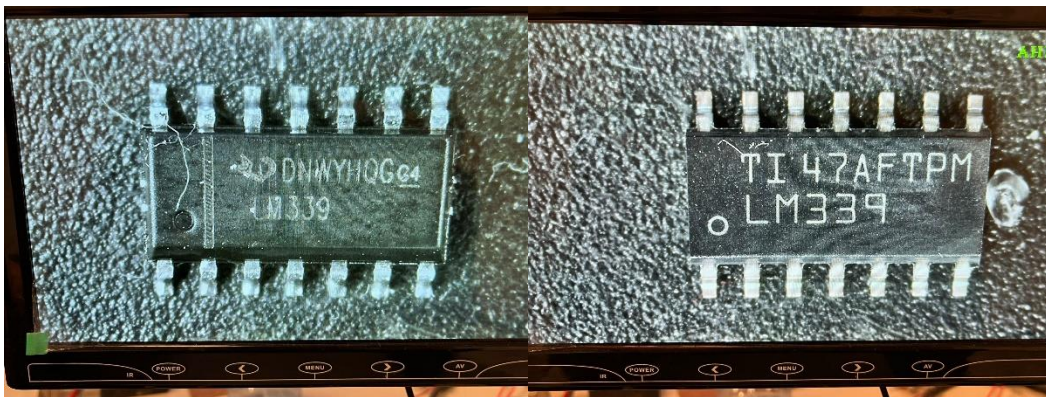
As a signalization company, we have tested our driver board (SMPS) that converts 220V AC to DC. Using the adjustment resistor on this driver board, we connected 6 power LEDs, branded Nichia, to its output.

In the latest tests, we conducted measurements with a fixed SMPS to determine whether the LM339DR integrated circuit, recently supplied by Orbitech, is authentic. Both the power LEDs and other components were kept constant, and measurements were taken using two separate connections. According to the measurement results, the total harmonic distortion (THDI) was found to be significantly high.

Additionally, it was observed that the supplied integrated circuit lacks the original Texas Instruments logo. To illustrate this more clearly, we have provided photos of the IC and the measurement results below.

In conclusion, these tests indicate that the LM339DR integrated circuit is not authentic, and this has had a negative impact on the performance of the SMPS.

Best regards,



Original LM339DR

Non-Original LM339DR

