

Rumore complessivo
 Banda 100m - 1k -> Vineq = 150nV -> 155dB
 Banda 100m - 10k -> Vineq = 226nV -> 151.5dB

su segnale massimo di 8.48V rms (12V di picco)

CMRR = 220dB

Gain = 20

Gain = 50

Gain = 1

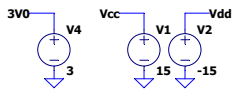
Gain = 1

Gain = 0.5

Gain = 0.5

AC 1
 Rser=100
 Vs1
 SINE(10 1m {Freq})

V=0.001*white(6.28*100e3*time)



```
.ac dec 100 0.000001 1Meg
.noise V(Out_1) Vs1 dec 100 100m 10k
.tran 0 3 50m 1m
.step param C 100u 5000u 100u
.param C = 100uF Freq=100
```

