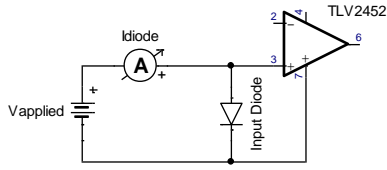
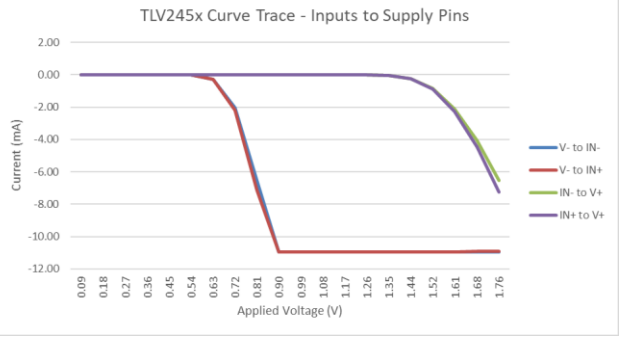
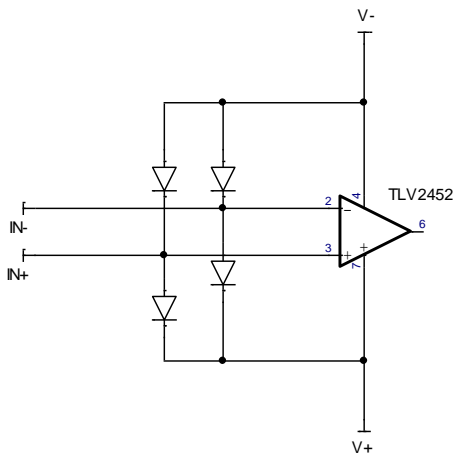


TLV2452 Input Diodes to Supply Rails Test

GPN/OPN (LTC)	Date Measured	Number of Devices	Temp.	Test Conditions	Result
TLV2452 (NA)	07/05/2023	1	25C	Applied voltage across two pins at a time Unpowered supplies	Confirmed input diodes (IN+ and IN-) to supply rails (V+ and V-)

Test Circuit:	Results:
<p>Representative circuit for IN+ to V+:</p> <ul style="list-style-type: none"> Testing for "Input Diode" if present by measuring current I_{diode}  <p><i>Similar configurations used for the other input pins to supply voltage combinations.</i></p>	

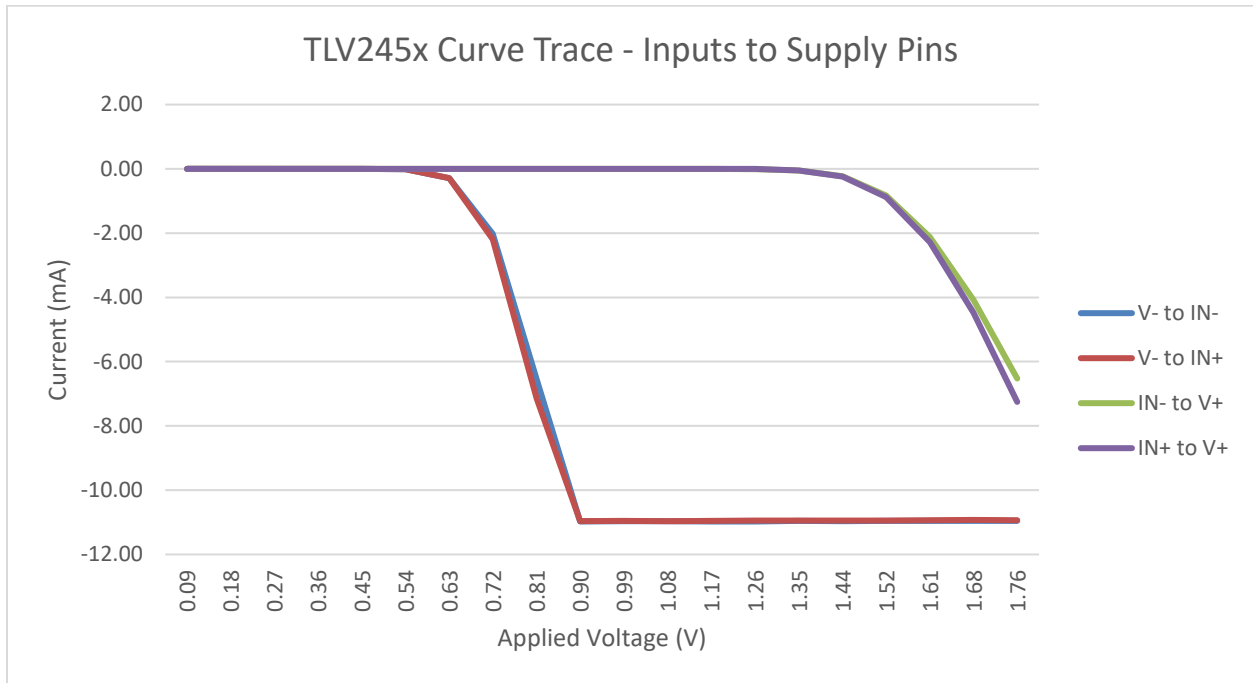
ESD diodes connected to Inputs:



TI is providing these Measurements as a convenience. Measurement data could change if equipment, environmental, or other factors from those TI used to measure the Measurements. Any technical, applications, or design advice, quality characterization, reliability data, or other services or items provided by TI does not expand or otherwise alter TI's warranties as set forth in TI's Terms of Sale and no additional obligations or liabilities arise from TI providing those services, items, or the Measurements. INFORMATION RELATING TO QUALITY AND RELIABILITY IS PROVIDED "AS IS." The customer is solely responsible for the design, validation, and testing of its applications as well as for compliance with all legal, regulatory, and safety-related requirements concerning its applications. See TI's Terms of Sale at www.ti.com

Addendum:

Curve Trace Results:



TI is providing these Measurements as a convenience. Measurement data could change if equipment, environmental, or other factors from those TI used to measure the Measurements. Any technical, applications, or design advice, quality characterization, reliability data, or other services or items provided by TI does not expand or otherwise alter TI's warranties as set forth in TI's Terms of Sale and no additional obligations or liabilities arise from TI providing those services, items, or the Measurements. INFORMATION RELATING TO QUALITY AND RELIABILITY IS PROVIDED "AS IS." The customer is solely responsible for the design, validation, and testing of its applications as well as for compliance with all legal, regulatory, and safety-related requirements concerning its applications. See TI's Terms of Sale at www.ti.com